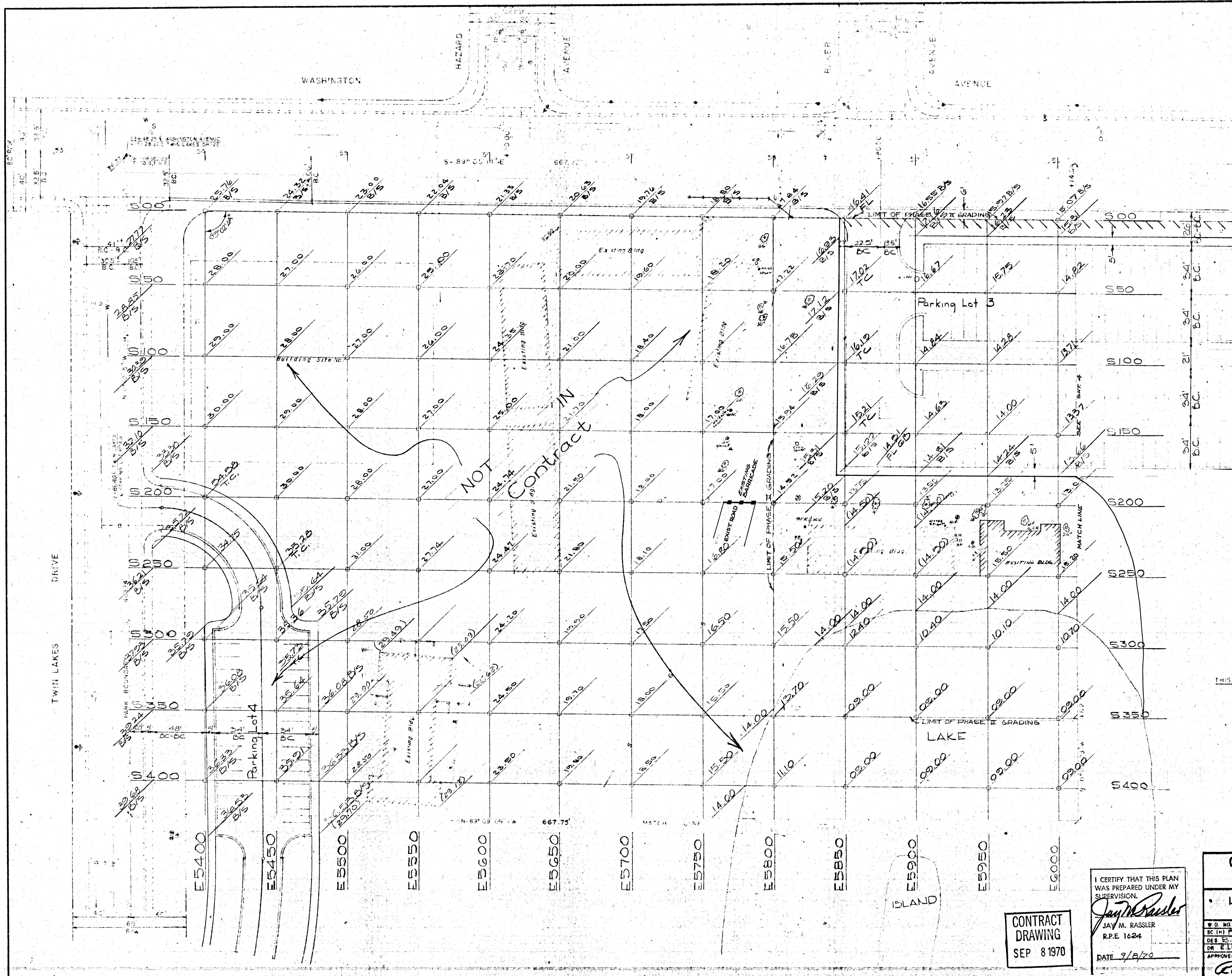


NOTES

- 1 All elevations shown are finish grade,
- 2 Bench mark is 06129B20 located at the NW corner of Washington and Magnolia - Elev. 2102.49
- 3 See C.L.V. Drawing 650-19-12 sht. 8 for elevations on Parking Lot 3
- 4 See CLV drawing 650-19-10A shts 14 & 15 for elevations on the lake.
- 5 See C.L.V. drawing 650-19-10D for elevations on parking lot 4
- 6 B/S denotes elevation at back of sidewalk
- 7 Phase II 0 cr. Topsoil.



THIS SHEET	N. 1/4	N. 1/2	N. 3/4
	1/9	1/9	1/9
	WEST	CENTRAL	EAST
	1/9	1/9	1/9
		SHEET 6	SHEET 7
	S.W. 1/4	SOUTH	S. ELY
	1/9	1/9	1/9
		SHEET 8	SHEET 9

PHASE II 27-0004
PHASE I NEV-OSD 7

CITY OF LAS VEGAS NEVADA
DEPARTMENT OF PUBLIC WORKS
SERVICES DIVISION

LORENZI PARK NORTHWESTERLY 1/9
FINISH GRADING

W.D. NO. 3111	F.B.R. NO. 70-74	DATE	DRAWING NO.
SC 111 P-301	SC 111	05-25-70	650-19-15
DES. E. H. HUNTER	DR. E. LOUIVIERE		FILE NO.
APPROVED BY DIRECTOR OF PUBLIC WORKS			
<i>[Signature]</i>			SHEET 3 OF 28

I CERTIFY THAT THIS PLAN WAS PREPARED UNDER MY SUPERVISION.
Jay M. Rassler
JAY M. RASSLER
R.P.E. 1624
DATE 9/8/70

CONTRACT
DRAWING
SEP 8 1970