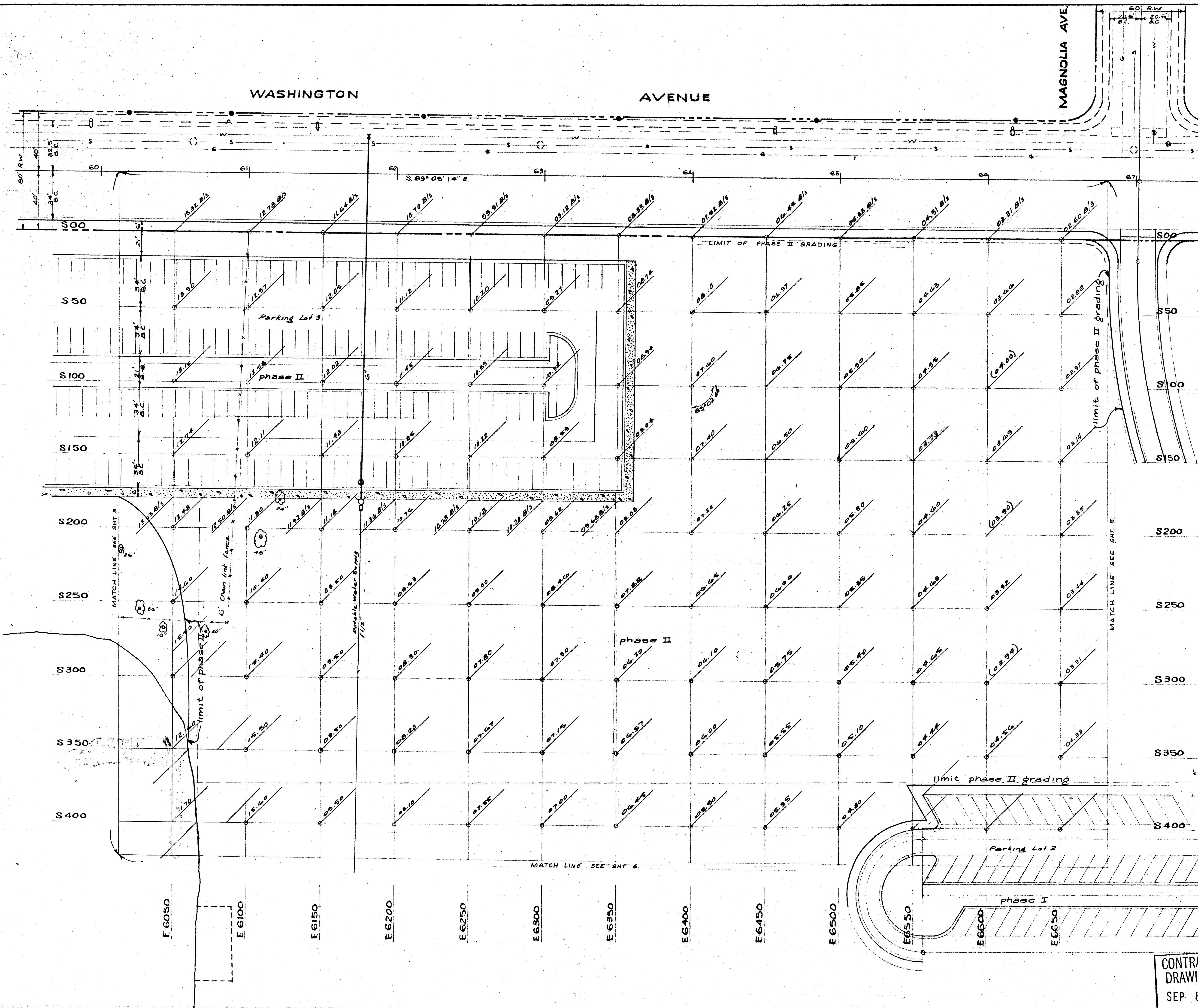


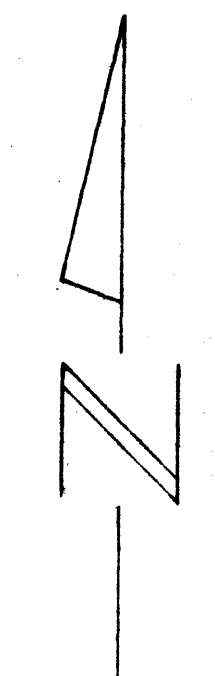
WASHINGTON AVENUE

MAGNOLIA AVE



NOTES

1. All elevations are finished grade.
2. Bench mark is 06129B20 located at the N.W. corner of Washington and Magnolia - Elev. 2102.49
3. See C.L.V. dwg. G50-19-10 A Sht. 10 of 16 for parking lot 2.
4. See C.L.V. dwg. G50-19-10A Shts. 12 & 13 of 16 for elevation on the lake.
5. B/S denotes back of sidewalk elevation.
6. See C.L.V. dwg. G50-19-12 for details of parking lot 3.
7. Phase II 1542' C.V. Topsoil.



I CERTIFY THAT THIS PLAN WAS PREPARED UNDER MY SUPERVISION.
Jay M. Rassler
 JAY M. RASSLER
 R.P.E. 1624
 DATE 7/8/70

THIS SHEET		
N/W'LY 1/9 SHEET 3	NORTH 1/9 SHEET 4	N/E'LY 1/9 SHEET 5
WEST 1/9	CENTRAL 1/9 SHEET 6	EAST 1/9 SHEET 7
S/W'LY 1/9	SOUTH 1/9 SHEET 8	S/E'LY 1/9 SHEET 9

CONTRACT
DRAWING
SEP 8 1970

PHASE II 27-0014
PHASE I NEV-03D-7

CITY OF LAS VEGAS NEVADA
 DEPARTMENT OF PUBLIC WORKS
 SERVICES DIVISION

LORENZI PARK NORTH 1/9
 FINISH GRADING

W.O. NO. 3111	F.B.K. NO. 70-1X	DATE	DRAWING NO.
SC (H) 1" = 30'	SC (V)	5-26-70	G50-19-15
DES. G. Zimmerman			FILE NO.
DR. J. Zimmerman			
APPROVED BY DIRECTOR OF PUBLIC WORKS			
<i>J. Zimmerman</i>			SHEET 4 OF 23