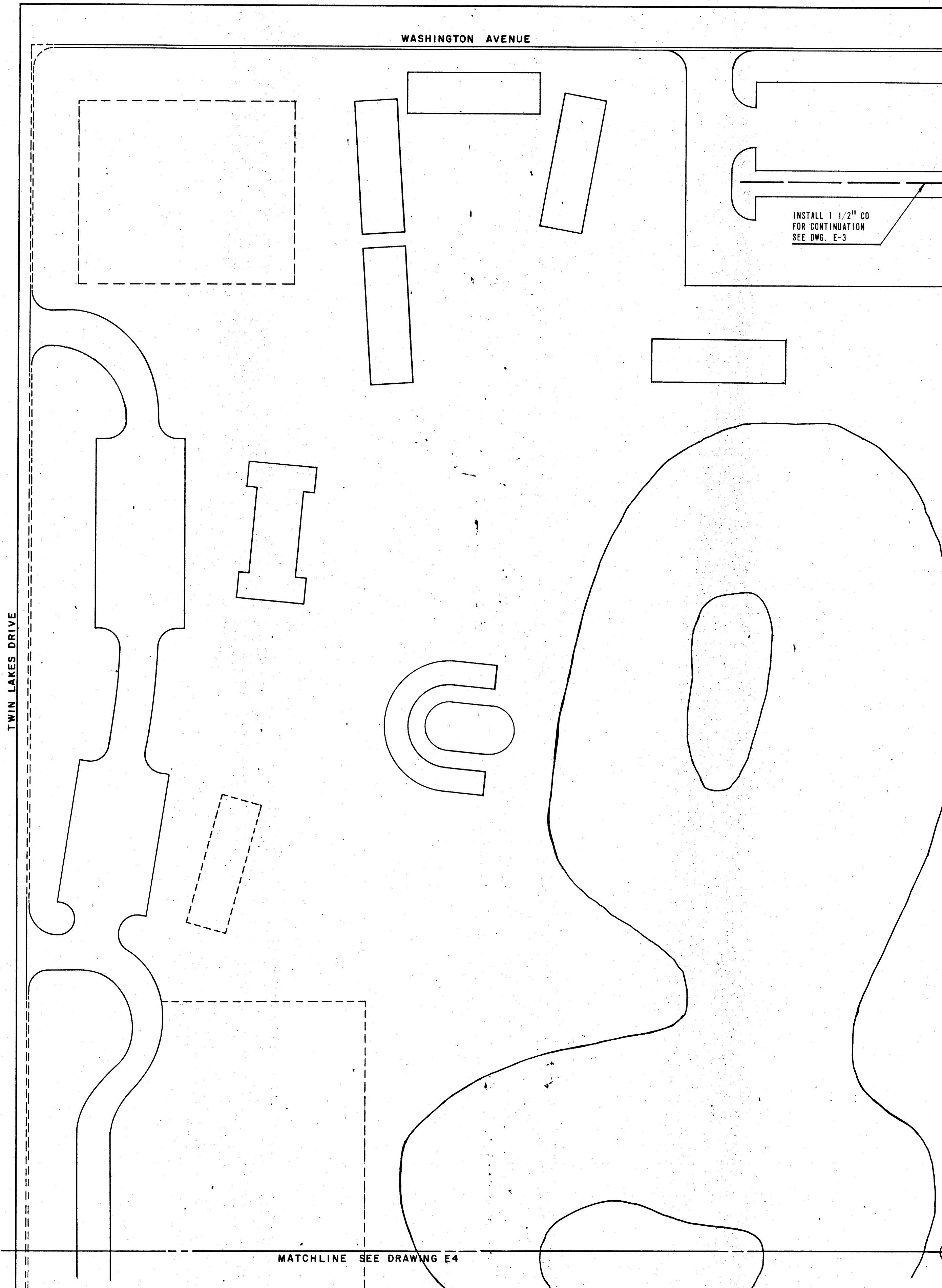


**CONDUIT PLAN-SWITCHGEAR AND TRANSFORMER PAD**  
SCALE 1/2" = 1'-0"

NOTE:  
FOR CONSTRUCTION DETAILS OF SWITCHGEAR AND TRANSFORMER PAD SEE DRAWING E7.

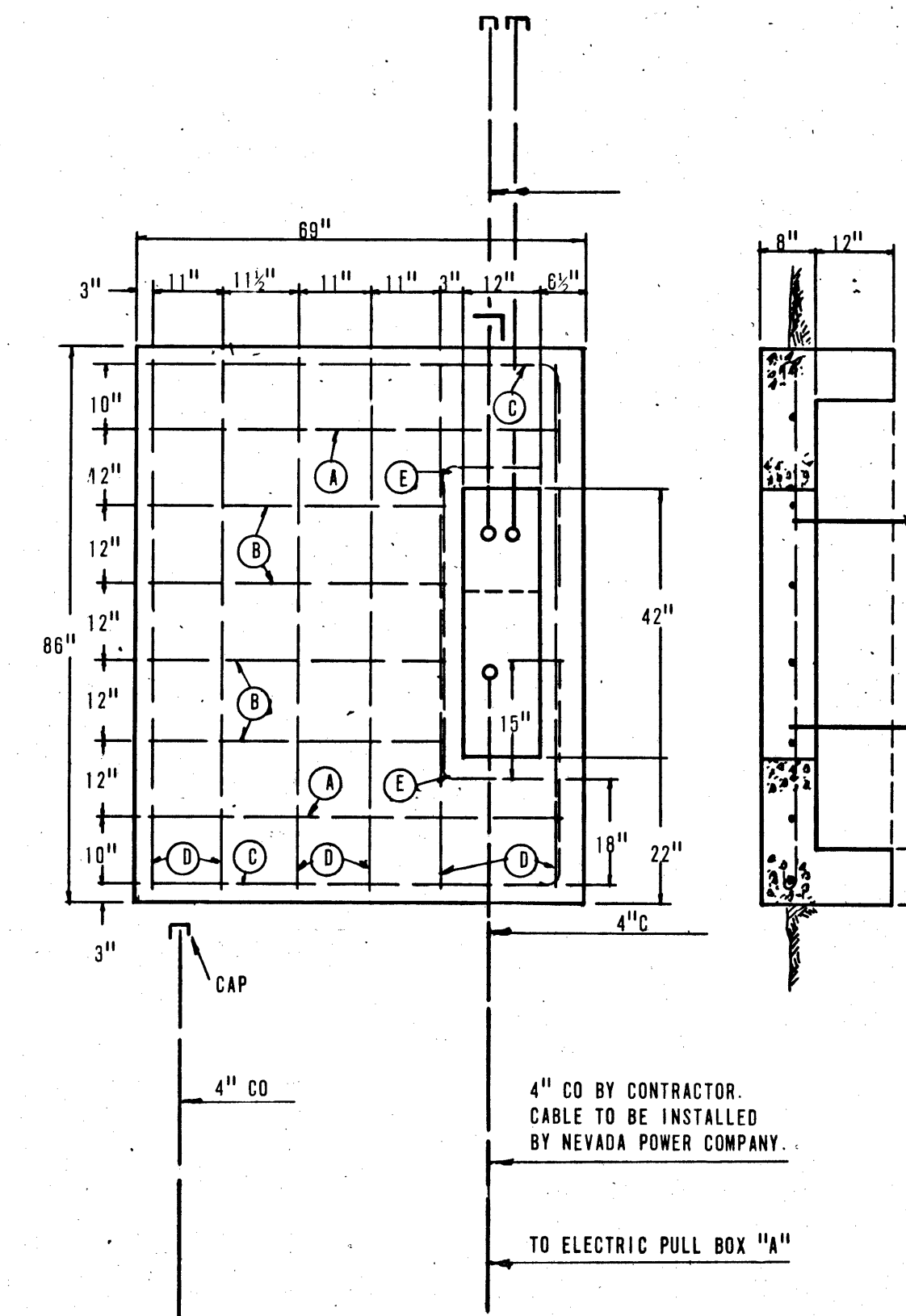


- LIST OF MATERIAL
- 2 - 1/2"x6'-0" GROUND ROD.
  - 2 - STEEL RODS AS PER -A-
  - 4 - STEEL RODS AS PER -B-
  - 2 - STEEL RODS AS PER -C-
  - 6 - STEEL RODS AS PER -D-
  - 2 - STEEL RODS AS PER -E-

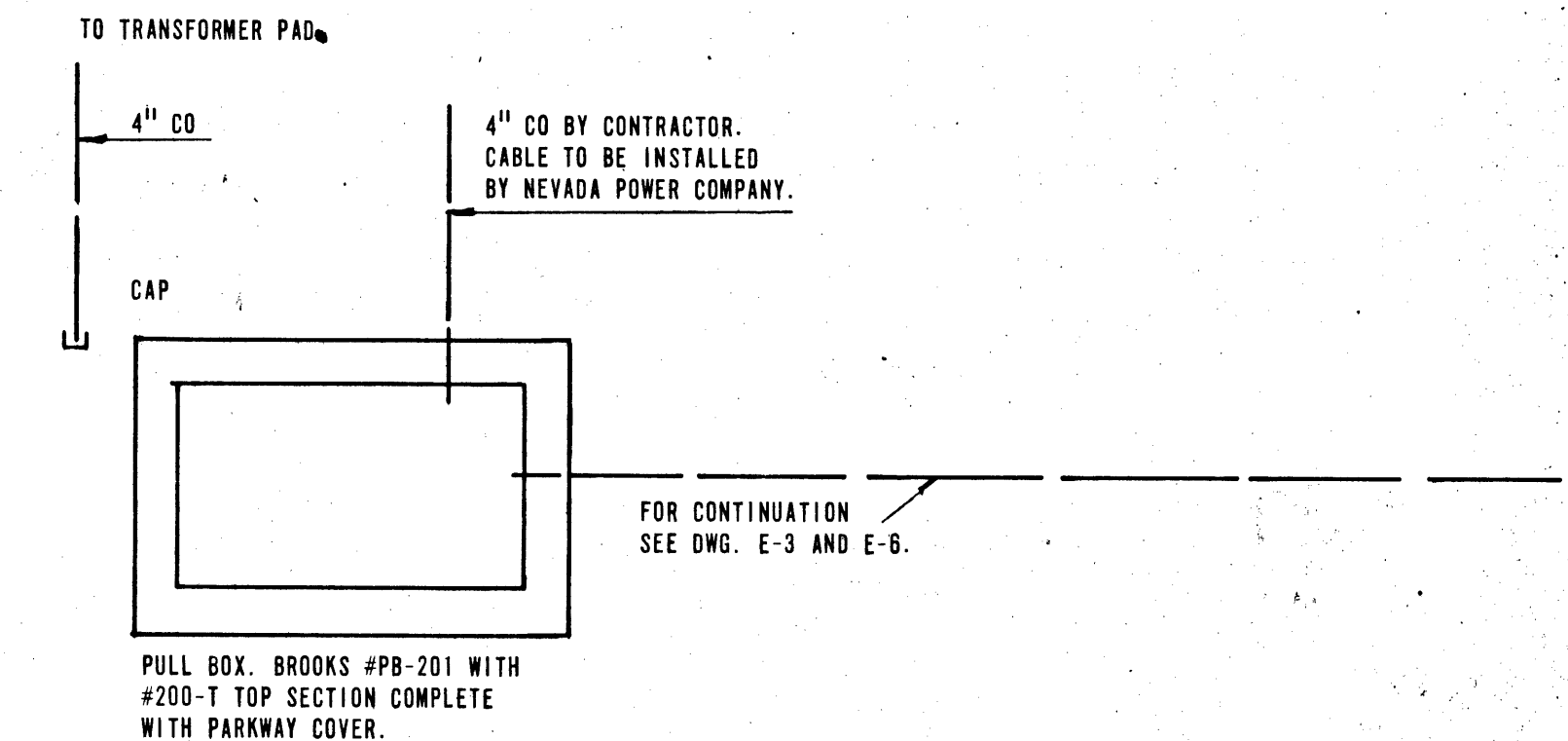


SCALE 1" = 50'-0"

- NOTES:
- 1 - ALL REINFORCEMENT STEEL TO BE 1/2" DIA. #4.
  - 2 - THE 12"x6" CUTOFF WALL MUST BE BUILT ALL AROUND PAD.
  - 3 - TWO 1/2"x6'-0" COPPERWELD GROUND RODS MUST BE INSTALLED IN TROUGH.
  - 4 - CONCRETE MIX SHALL BE 1:2:4 PROPORTION IF FIELD MIXED, OR 3000 P.S.I. AFTER 28 DAYS IF TRANSITE MIX.
  - 5 - RELATIVE COMPACTION OF NATURAL GROUND SHALL BE NOT LESS THAN 90%.
  - 6 - SPOT WELD OR FASTEN WITH WIRE ALL RODS AT CROSSINGS.



**TRANSFORMER PAD "A"**  
SCALE 1/2" = 1'-0"



**ELECTRICAL PULL BOX "A"**  
SCALE 1/2" = 1'-0"

CONTRACT  
DRAWING  
MAY 15 1970

APPROVED	
DATE	DATE
7	4/11/70
3	4/11/70
2	4/11/70
1	4/11/70

A		5/26/70	SEE ADDENDUM	NEV. OSD-7
No	DATE	REVISION	BY	C.M.D.
<b>JOSEPH P. GEDWILL</b> CONSULTING ENGINEERS 3135 INDUSTRIAL ROAD LAS VEGAS NEVADA 89102				
<b>CITY OF LAS VEGAS NEVADA</b> DEPARTMENT OF PUBLIC WORKS SERVICES DIVISION				
<b>LORENZI PARK POWER &amp; LIGHTING</b> PLOT PLAN				
W.O. NO.	F.B.K. NO.	DATE	DRAWING NO.	
SC.(H):	SC.(V):		<b>E2</b>	
DES. J. P. GEDWILL			FILE NO.	650.19-13
DR. G. PEREZ		4/11/70		
APPROVED BY DIRECTOR OF PUBLIC WORKS				<b>SHEET 2 OF 9</b>