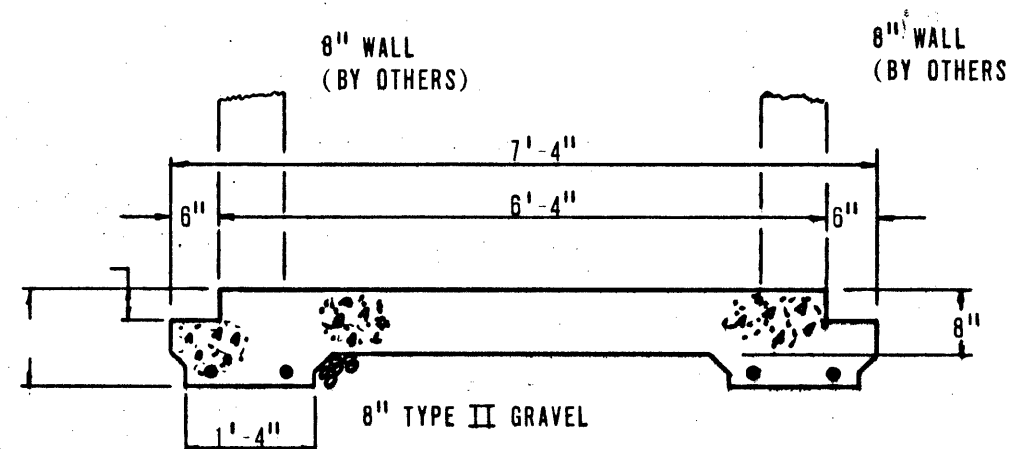


SECTION A-A, B-B, C-C. (FROM DRAWING E7)

SCALE: 1/2" = 1'-0"

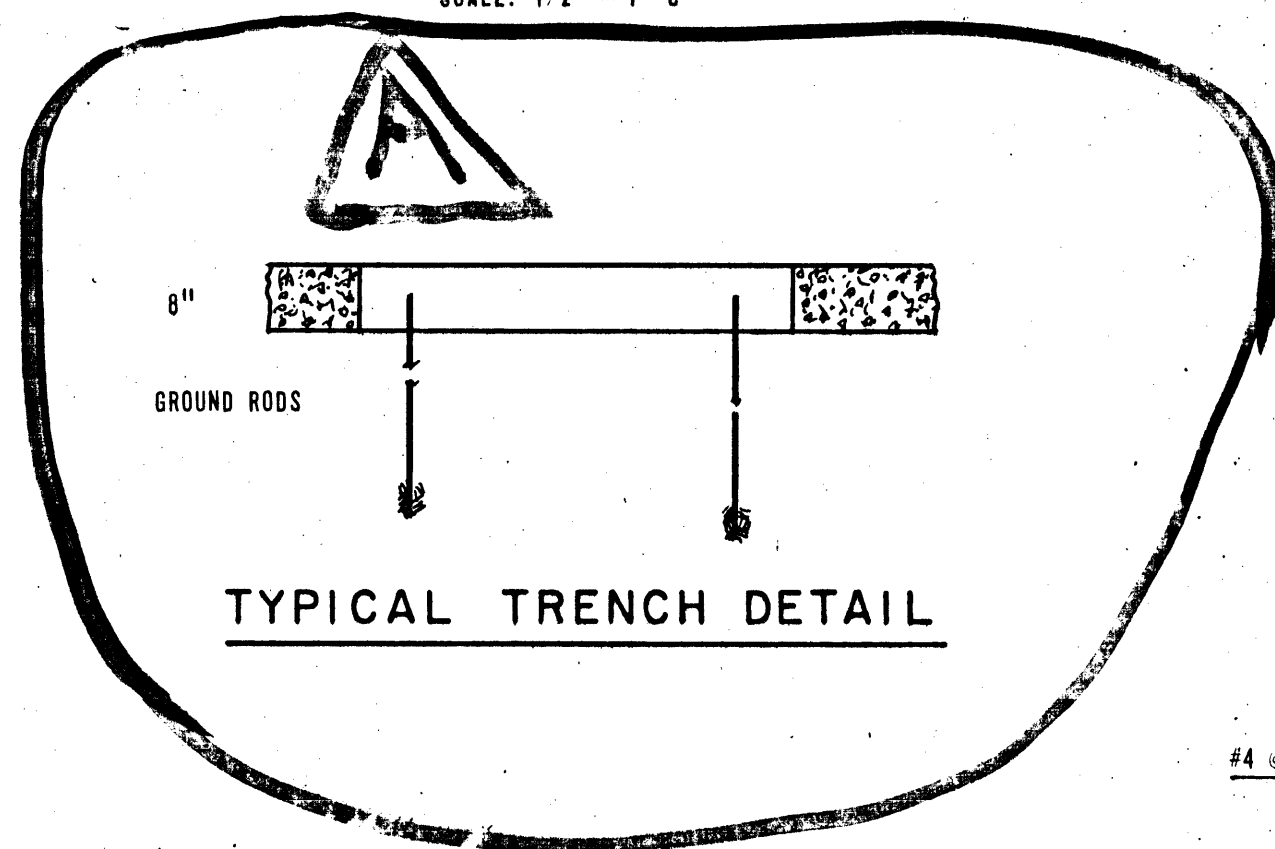
DIMENSION A-A = 10'-7"
DIMENSION B-B = 19'-8"
DIMENSION C-C = 16'-2"

(FOR PLAN DETAILS SEE DRAWING E7)

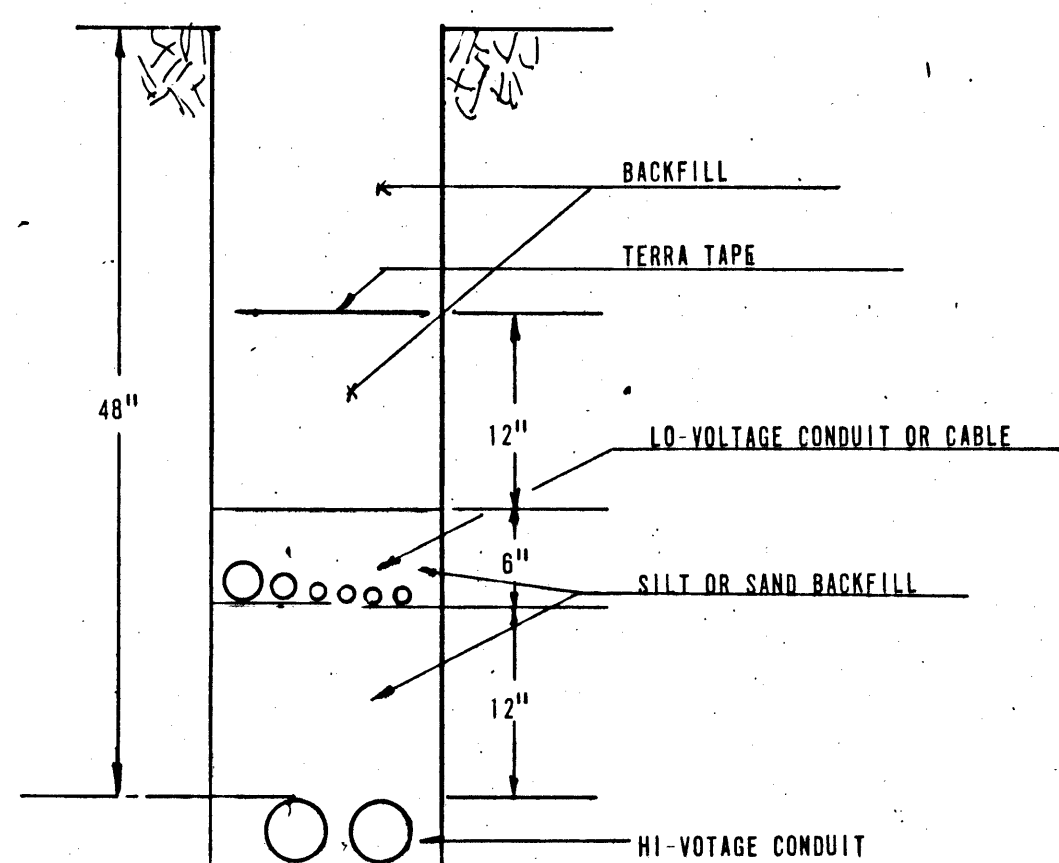


SECTION D-D (FROM DRAWING E7)

SCALE: 1/2" = 1'-0"

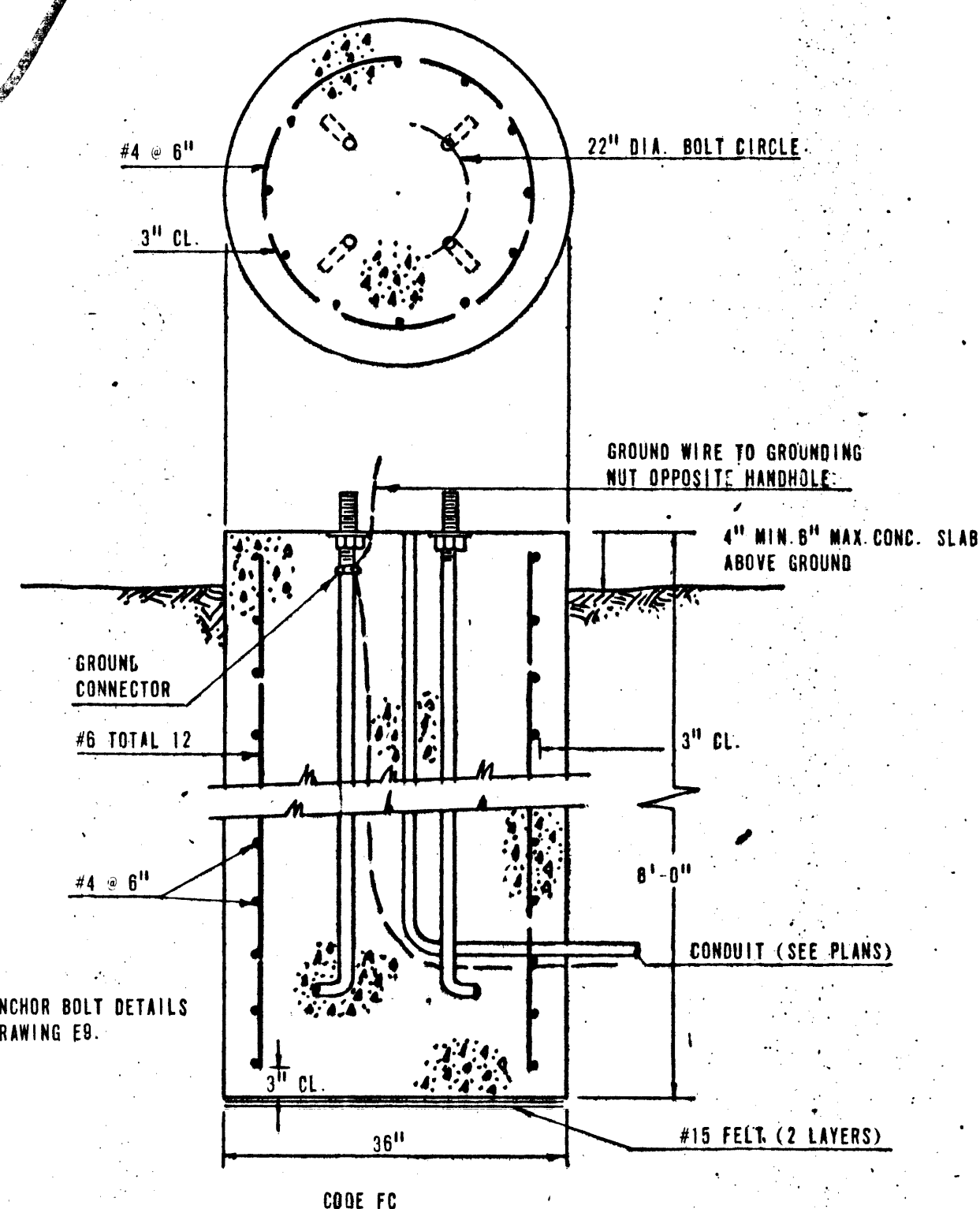


TYPICAL TRENCH DETAIL



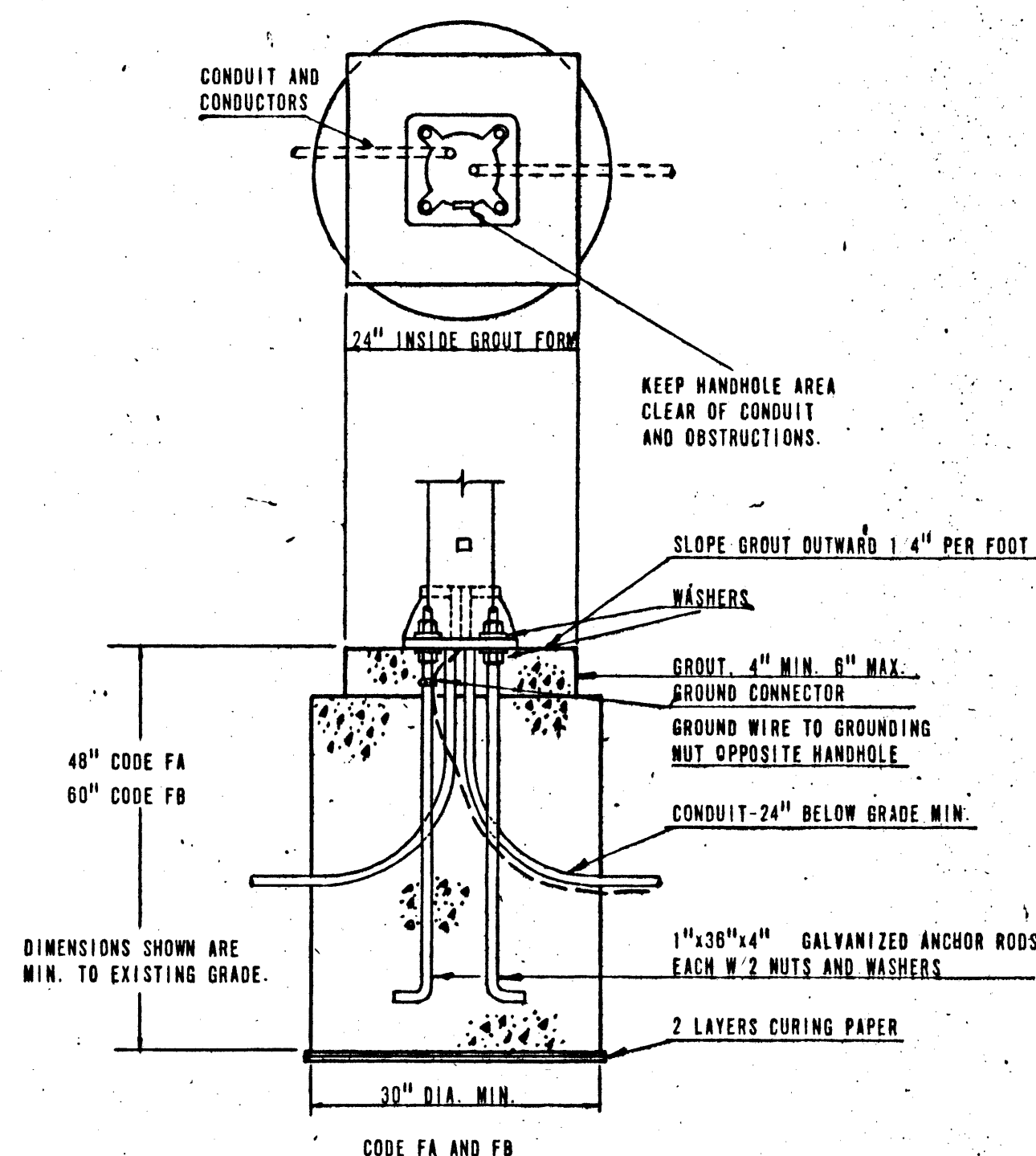
TRENCHING DETAIL

NO SCALE



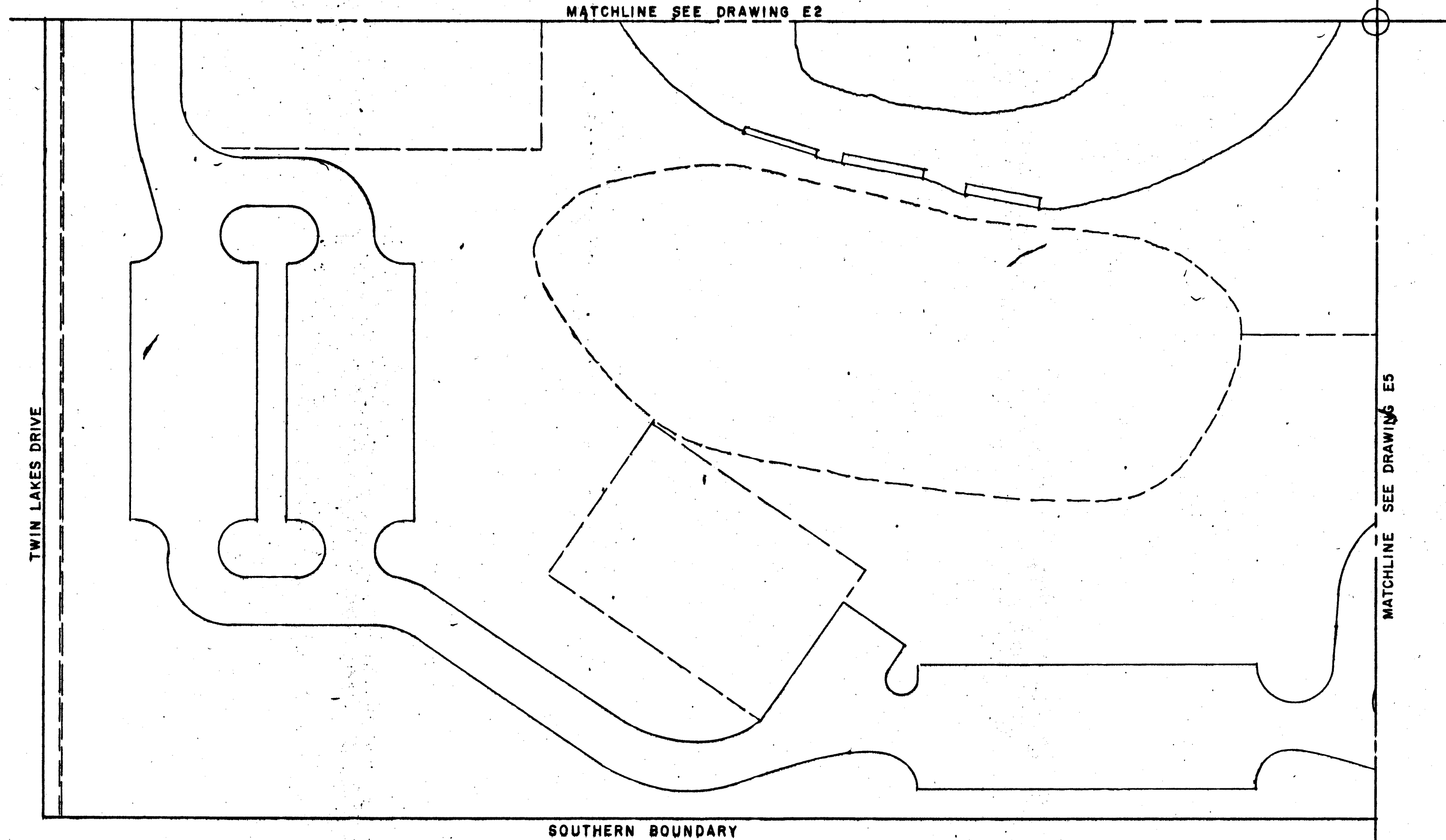
FLOOD LIGHT POLE FOUNDATION DETAILS

NO SCALE



STREET LIGHT POLE FOUNDATION DETAILS

NO SCALE

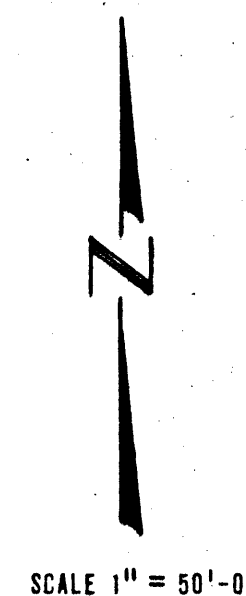


MATCHLINE SEE DRAWING E2

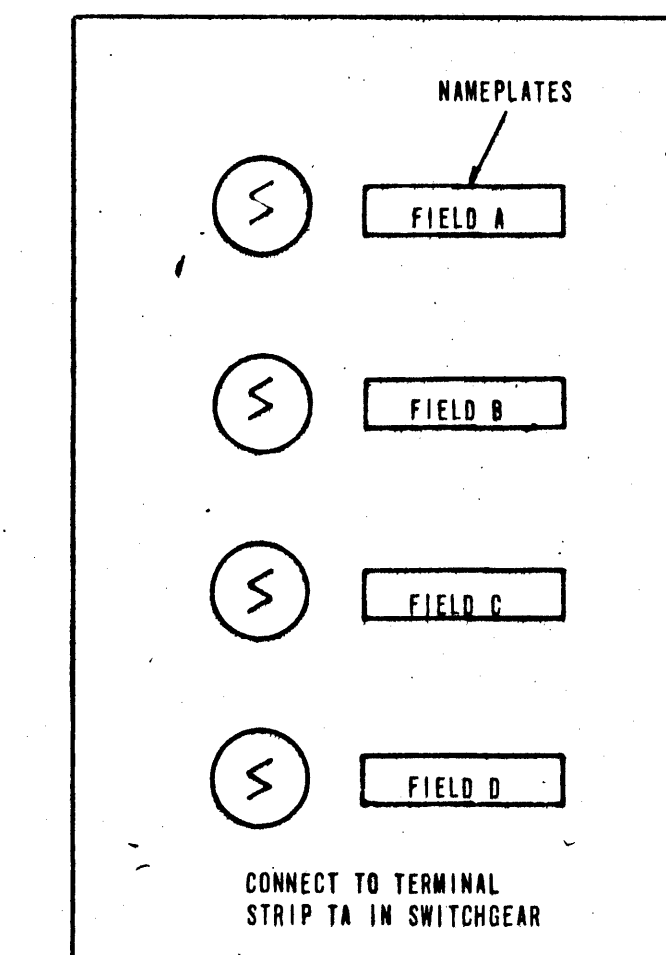
MATCHLINE SEE DRAWING E5

SOUTHERN BOUNDARY

TWIN LAKES DRIVE



SCALE 1" = 50'-0"



SPECIFICATIONS:
THE CONTROL UNITS SHALL BE SQUARE D CATALOG #TS-27K1A KEY OPERATOR WITH TYPE TA SINGLE POLE DOUBLE THROW CONTACT BLOCK OR EQUAL HEAVY DUTY OIL TIGHT CONTROL UNITS INSTALLED IN A WEATHER-TIGHT ENCLOSURE. THE OPERATOR SHALL BE A 2-POSITION SPRING RETURN FROM RIGHT TO CENTER. EACH OPERATOR SHALL BE PROVIDED WITH DIS-SIMILAR KEYS. 10 KEYS SHALL BE PROVIDED WITH EACH OPERATOR. 5 MASTER KEYS SHALL ALSO BE PROVIDED.
EXACT LOCATION OF CONTROL UNIT SHALL BE DETERMINED LATER.

CONTRACT DRAWING MAY 15 1970

FIELD LIGHTING CONTROL PANEL

APPROVED		DATE
RT	LEV	5/26/70
3	SERV	5/26/70
2	FIELD	5-26-70
	TRAF	
	UTIL	
	SHED	
	SAD	
	ENGR.	5/26

REV		DATE	REVISION	BY	C'D
1	5/26/70	SEE ADDENDUM			

NEV OSD - 7

JOSEPH P. GEDWILL
CONSULTING ENGINEER
3135 INDUSTRIAL ROAD
LAS VEGAS NEVADA 89102

CITY OF LAS VEGAS NEVADA
DEPARTMENT OF PUBLIC WORKS
SERVICES DIVISION

LORENZI PARK POWER & LIGHTING
PLOT PLAN AND DETAILS

W.D. NO.	FBK. NO.	DATE	DRAWING NO.
SC.IV	SC.IV		E4
DES. J. P. GEDWILL			
DR. G. PEREZ		4/14/70	FILE NO.
APPROVED BY DIRECTOR OF PUBLIC WORKS			650.19-13

SHEET 4 OF 9