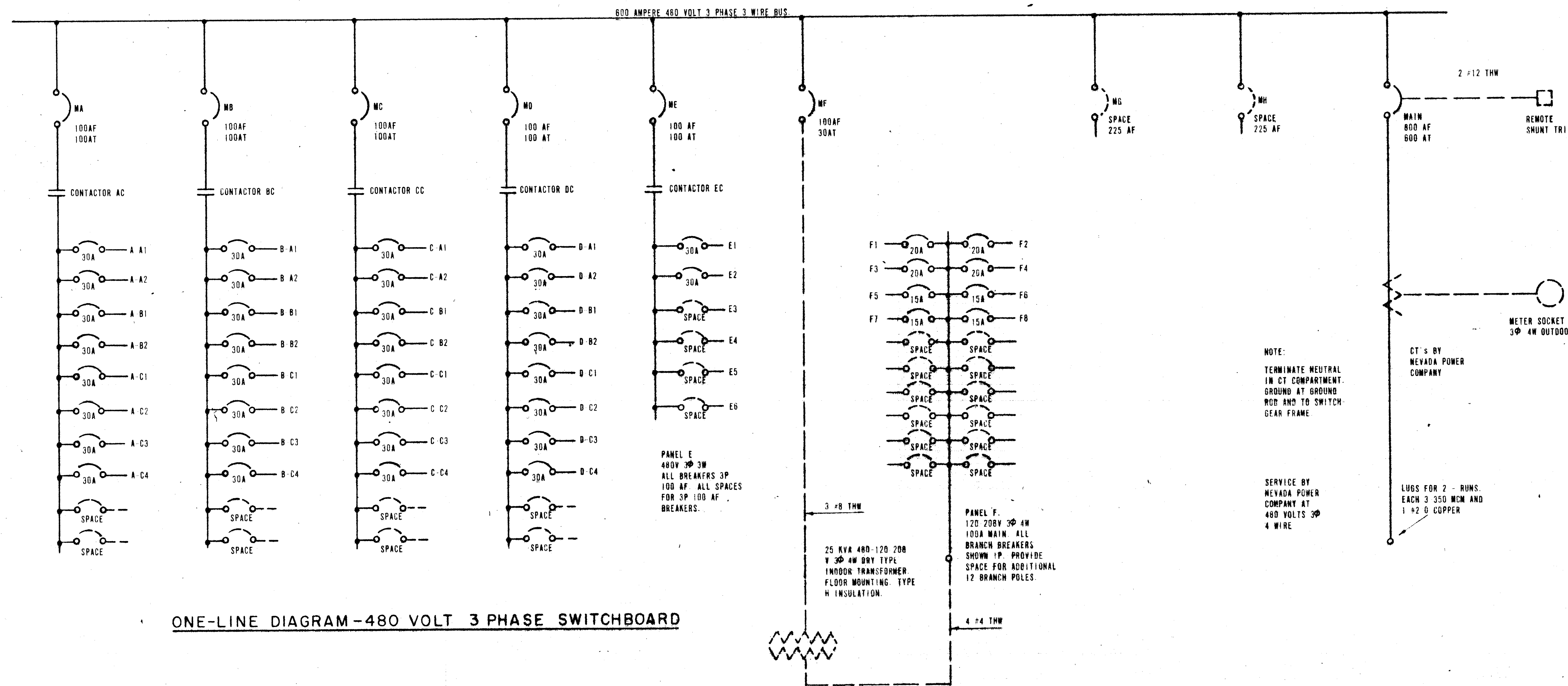
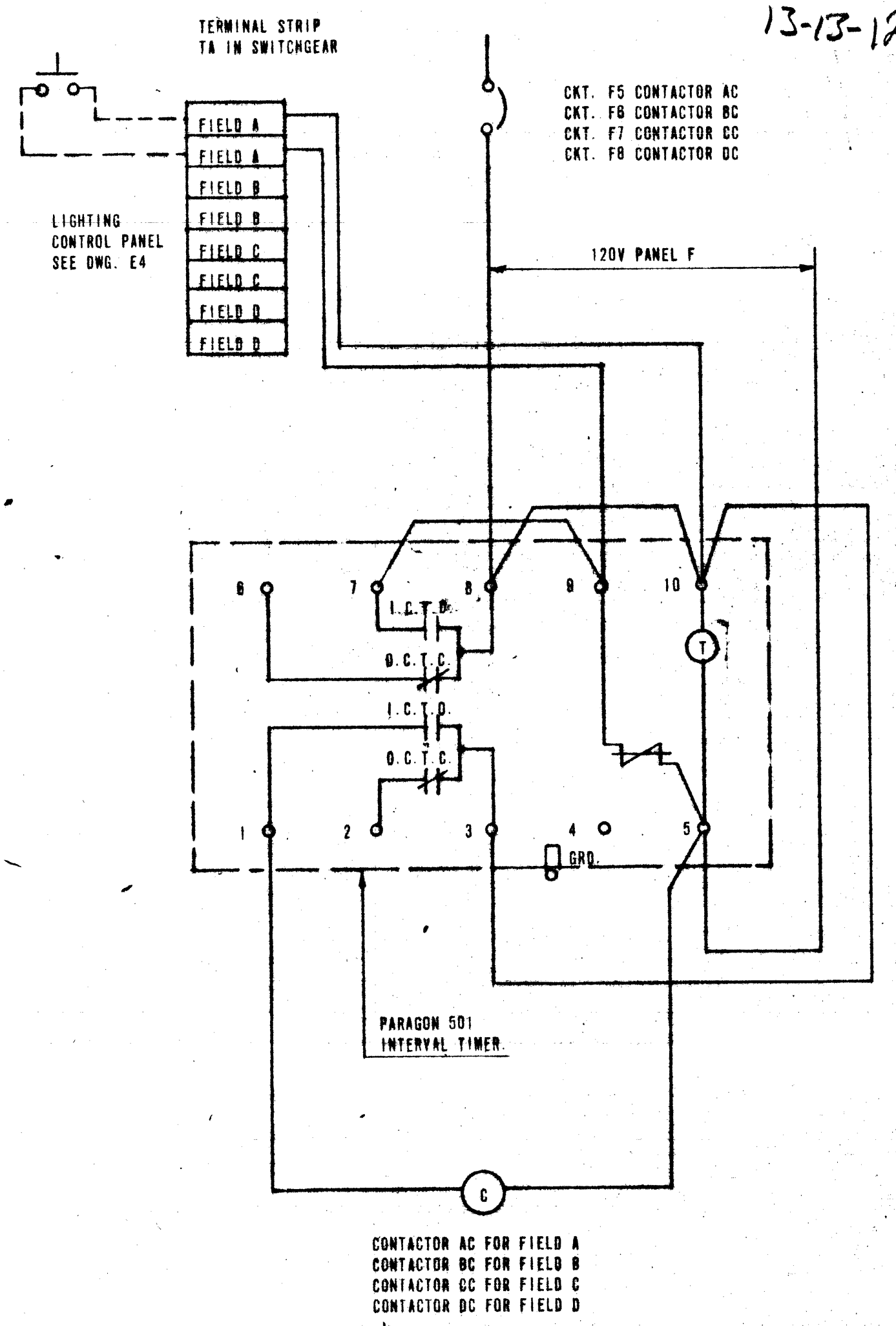


13-13-120

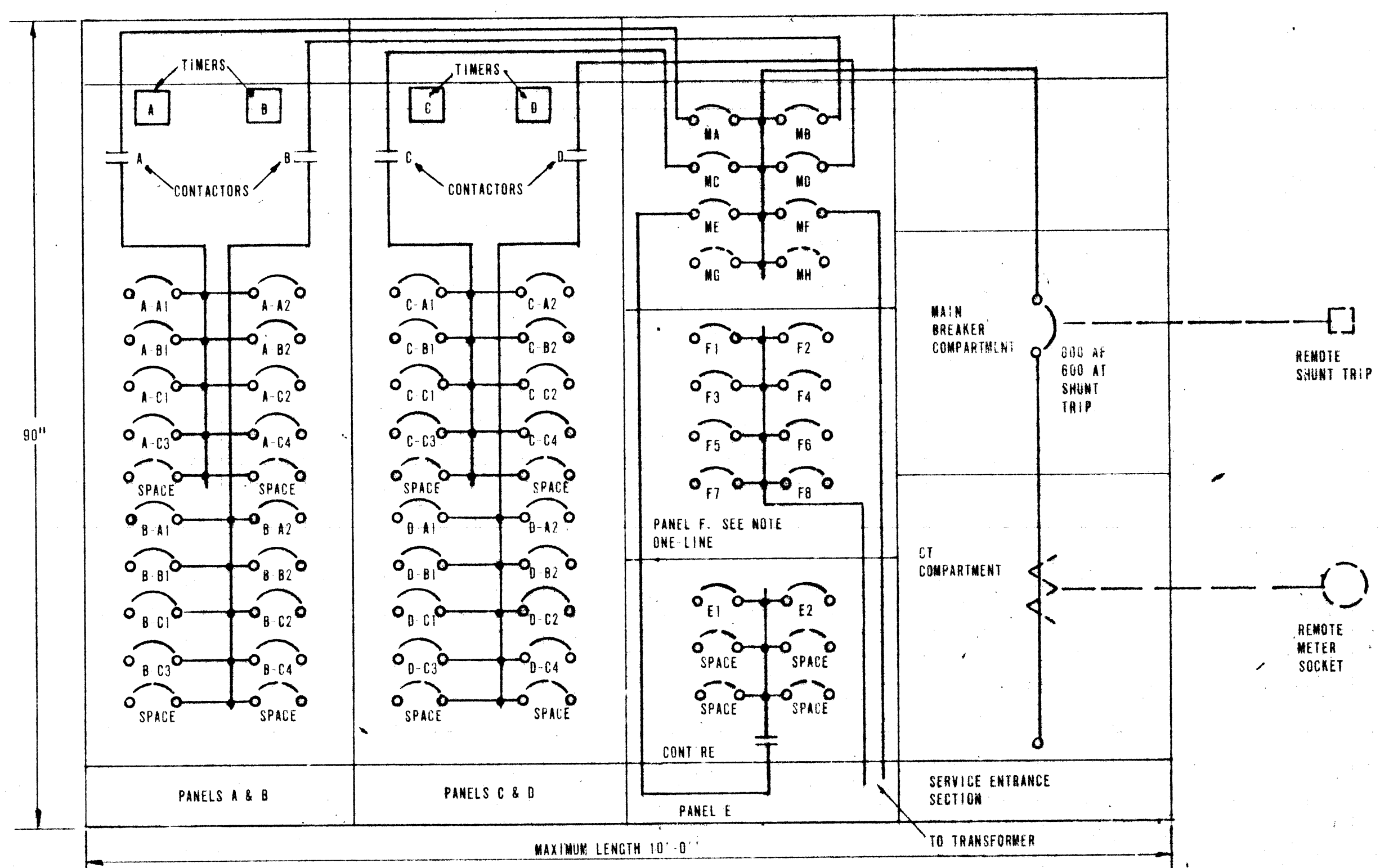


ONE-LINE DIAGRAM-480 VOLT 3 PHASE SWITCHBOARD



WIRING DIAGRAM-TIMERS AND CONTACTORS

480 VOLT 3 PHASE SWITCHBOARD SPECIFICATIONS.



ELEVATION-480 VOLT 3 PHASE SWITCHBOARD

- ENCLOSURE**  
THE ENCLOSURE SHALL BE FREE-STANDING, TOTALLY ENCLOSED DEAD FRONT, CONSTRUCTED OF CODE GAGE STEEL AND SHALL BE NEMA 1 GENERAL PURPOSE ENCLOSURE FOR INDOOR INSTALLATION PAINTED GRAY. THE HEIGHT SHALL BE A MAXIMUM 90 INCHES. THE WIDTH SHALL BE 20 INCHES APPROXIMATELY. THE MAXIMUM LENGTH SHALL BE 10 FEET. LENGTH MAY BE REDUCED, HOWEVER THE CIRCUIT BREAKER ARRANGEMENT SHALL REMAIN AS SHOWN IN ELEVATION. THE SWITCHBOARD SHALL FIT ON A 12 INCH WIDE TRENCH AND ALL CABLING SHALL ENTER FROM THE BOTTOM.
- SERVICE ENTRANCE SECTION**  
(a) THE CT COMPARTMENT SHALL MEET THE REQUIREMENTS OF THE NEVADA POWER COMPANY FOR A 480 VOLT 3 PHASE 4 WIRE SERVICE.  
(b) THE MAIN BREAKER SHALL BE MANUALLY OPERATED 3 POLE 800 AMP. FRAME FOR OPERATION ON 480 VOLTS 60 CYCLES. THE BREAKER SHALL BE PROVIDED WITH INTERCHANGEABLE THERMAL MAGNETIC TRIP ELEMENTS, AND AS SHIPPED SHALL BE PROVIDED WITH 600 AMPERE TRIPS. THE BREAKER SHALL ALSO BE PROVIDED WITH A SHUNT TRIP FOR REMOTE TRIPPING. THE MINIMUM INTERRUPTING RATING RMS ASYMMETRICAL SHALL BE 40 000 AMPERES AT 480 VOLTS.
- PANELS A AND B, C AND D**  
PANELS A, B, C AND D SHALL BE IDENTICAL AND SHALL CONTAIN:  
(a) EACH PANEL BOARD SHALL CONTAIN THE NUMBER OF BREAKERS AND SPACES AS SHOWN IN THE ONE LINE DIAGRAM AND THE ELEVATION. ALL BREAKERS SHALL BE 3 POLE 480 VOLT 100 AMP. FRAME MOLDED CASE WITH NON-INTERCHANGEABLE TRIPS OF RATINGS AS SHOWN IN THE ONE LINE DIAGRAM. SPACES AS INDICATED SHALL BE FOR 3 POLE 480 VOLT 100 AMP. FRAME BREAKERS.  
(b) THE MAINS SHALL BE 3 W RATED 100 AMPERES 480 VOLTS.  
(c) CONTACTORS AC, BC, CC AND DC SHALL BE 3 POLE AND HAVE AN 8 HOUR RATING OF 100 AMPERES AT 480 VOLTS. THE OPERATING COIL SHALL BE FOR OPERATION ON 120 VOLTS 60 CYCLE.  
(d) AUTOMATIC TIMERS SHALL BE PARAGON MODEL #501-142 D WITH PARAGON #4553 DEMOUNTABLE BASE OR EQUAL MOTOR DRIVEN INTERVAL TIMER FOR MOMENTARY CONTACT OPERATION ON 120 VOLTS 60 CYCLES. RANGE OF ADJUSTABILITY SHALL BE FROM 10 MINUTES TO 5 HOURS. THE TIMER SHALL CONTAIN 4 SWITCHES, 2 I.C.T.D. AND 2 I.O.T.C. SEE WIRING DIAGRAM FOR CONNECTION TO CONTACTORS. CONNECTIONS AS SHOWN IN DIAGRAM SHALL BE BY SUPPLIER OF SWITCHGEAR.
- PANEL E**  
(a) PANEL E SHALL CONTAIN THE NUMBER OF BREAKERS AND SPACES AS SHOWN IN THE ONE LINE DIAGRAM AND THE ELEVATION. ALL BREAKERS SHALL BE 3 POLE 480 VOLT 100 AMP. FRAME MOLDED CASE WITH NON-INTERCHANGEABLE TRIPS OF RATINGS AS SHOWN IN THE ONE LINE DIAGRAM. SPACES AS INDICATED SHALL BE FOR 3 POLE 480 VOLT 100 AMP. BREAKERS.  
(b) CONTACTOR EC SHALL BE 3 POLE AND HAVE AN 8 HOUR RATING OF 100 AMPERES AT 480 VOLTS. THE OPERATING COIL SHALL BE FOR OPERATION ON 120 VOLTS 60 CYCLE.
- PANEL F**  
PANEL F SHALL BE 120 208V 3 PHASE 4 WIRE 100 AMPERES MAIN AND SHALL CONTAIN THE NUMBER OF 1 POLE BREAKERS OF TRIP RATINGS AS SHOWN IN THE ONE-LINE DIAGRAM AND SHALL CONTAIN SPACES FOR AN ADDITIONAL 12 BRANCH POLES. THE BREAKERS SHALL BE MOLDED CASE PLUG ON TYPE.

- DISTRIBUTION BREAKERS MA, MB, MC, MD, ME AND MF.**  
BREAKERS MA, MB, MC, MD, ME AND MF SHALL BE 3 POLE 100 AMP. FRAME 480 VOLT MOLDED CASE WITH NON-INTERCHANGEABLE TRIPS WITH TRIP RATINGS AS SHOWN IN THE ONE LINE DIAGRAM.
- SPACES, DISTRIBUTION BREAKERS MG AND MH.**  
SPACES FOR DISTRIBUTION BREAKERS MG AND MH SHALL BE FOR 3 POLE 225 AMP. FRAME MOLDED CASE BREAKERS.
- GENERAL**  
THE SWITCHBOARD SHALL BE SQUARE D, WESTINGHOUSE, GENERAL ELECTRIC OR APPROVED EQUALS.  
NAMEPLATES SHALL BE PROVIDED FOR THE FOLLOWING:  
(a) CIRCUIT NUMBERS ON PANELS A, B, C, D, E AND F.  
(b) BREAKER LETTERS ON BREAKERS MA TO MH  
(c) PANELS A, B, C, D, E, AND F.  
(d) MAIN BREAKER

CONTRACT DRAWING  
MAY 15 1970

APPROVED	
DATE	DATE
4 DIV	5/15/70
3 D.P.W.	5/15/70
2 SERV.	5/15/70
1 FIELD	5/15/70
1 SUBD.	
1 TRAFF.	
1 UTIL.	
1 ENGR.	

NEV. OSD-7

**JOSEPH P. GERWILL**  
CONSULTING ENGINEER  
8100 SOUTHWEST ROAD  
LAS VEGAS, NEVADA 89103

**CITY OF LAS VEGAS NEVADA**  
DEPARTMENT OF PUBLIC WORKS  
SERVICES DIVISION

**LORENZI PARK POWER & LIGHTING**  
SWITCHGEAR DIAGRAMS & SPECIFICATIONS

W.O. NO.	F.B.K. NO.	DATE	DRAWING NO.
SC (H.)	SC (V)	4-15-70	E8
DES. J. P. GERWILL			FILE NO.
DR. J. P. GERWILL			650.19-13
APPROVED BY: [Signature]			SHEET 8 OF 9