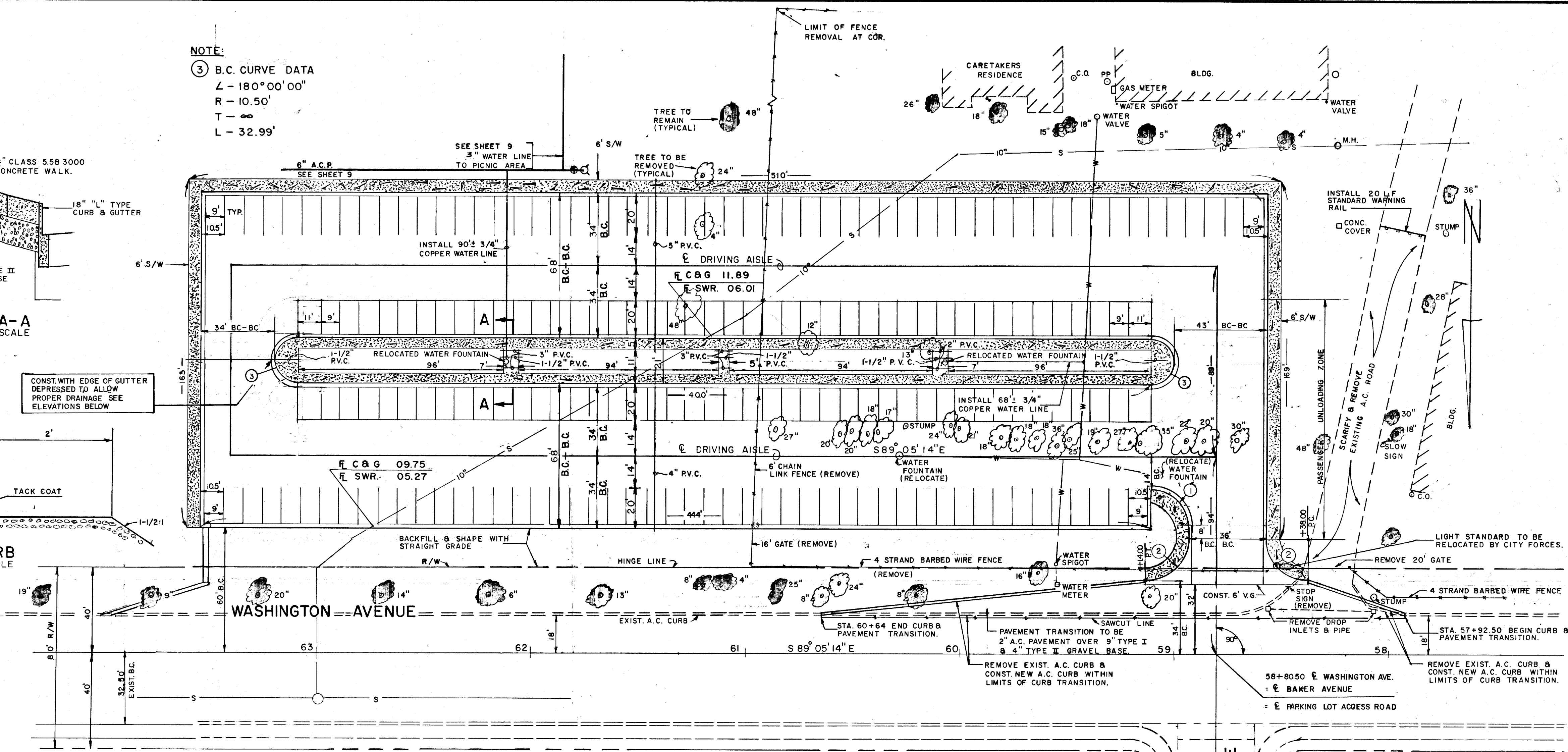
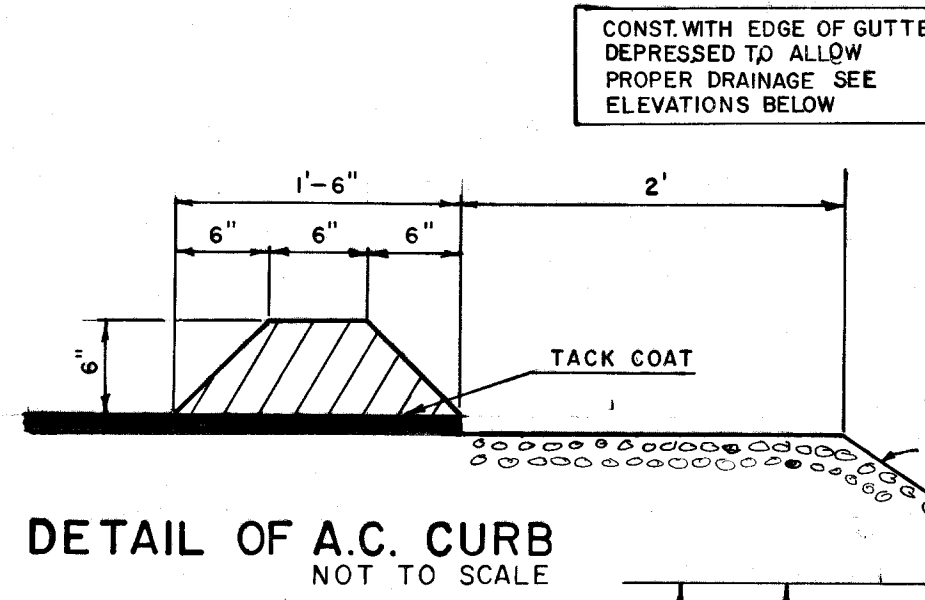
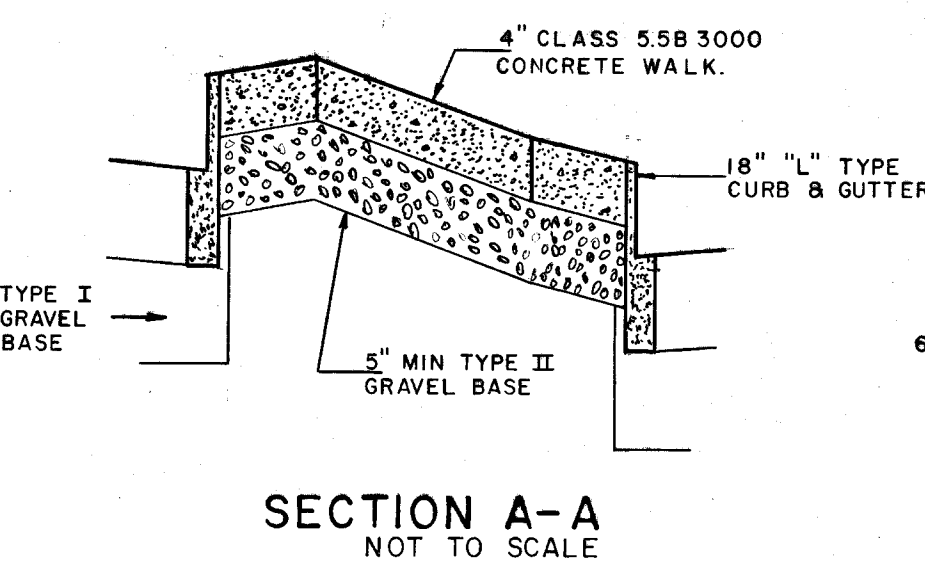
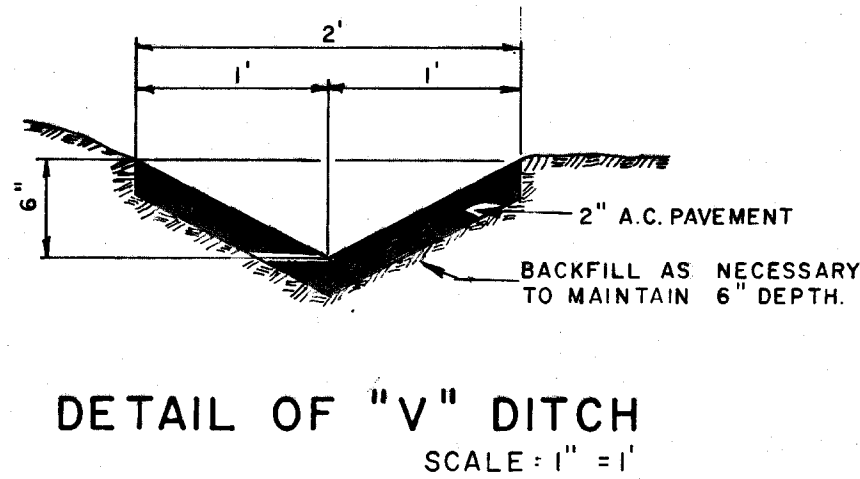


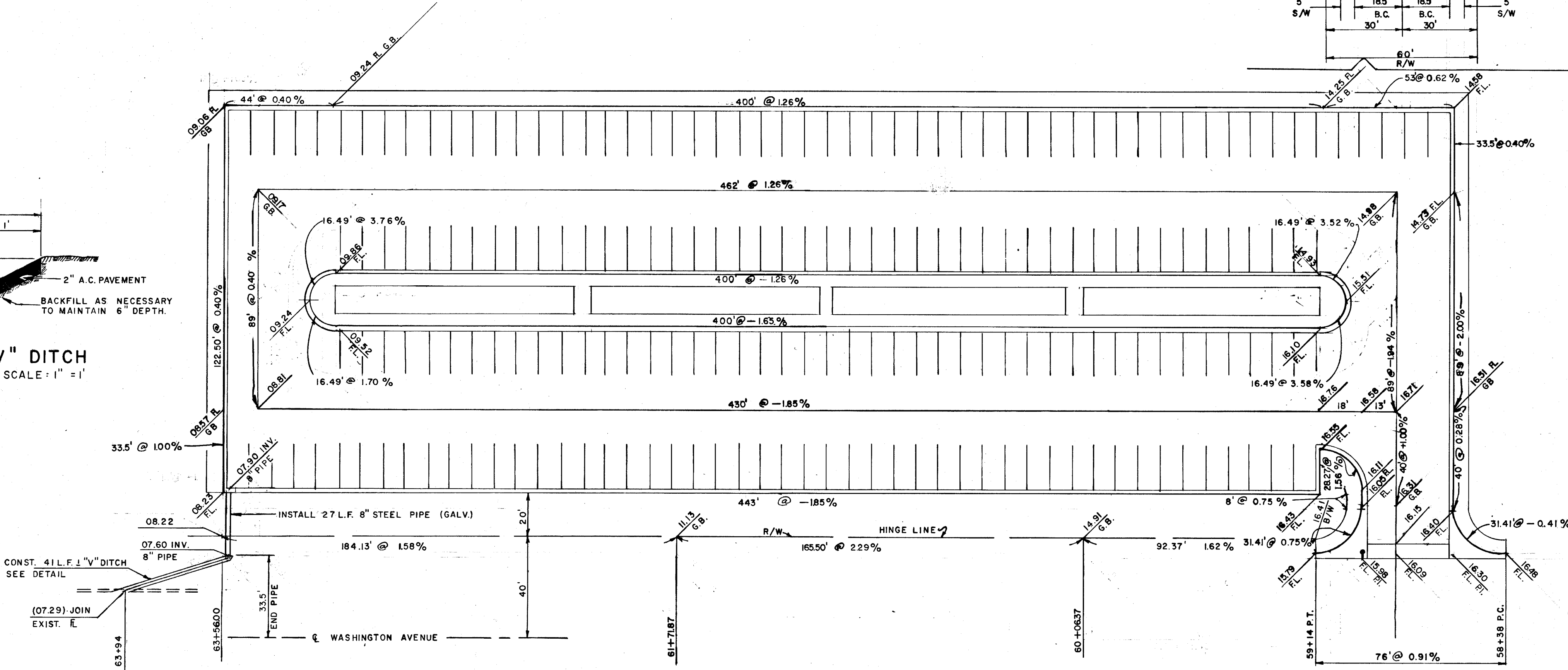
NOTE:
 (3) B.C. CURVE DATA
 L - 180°00'00"
 R - 10.50'
 T - ∞
 L - 32.99'



PLAN VIEW
192 SPACES

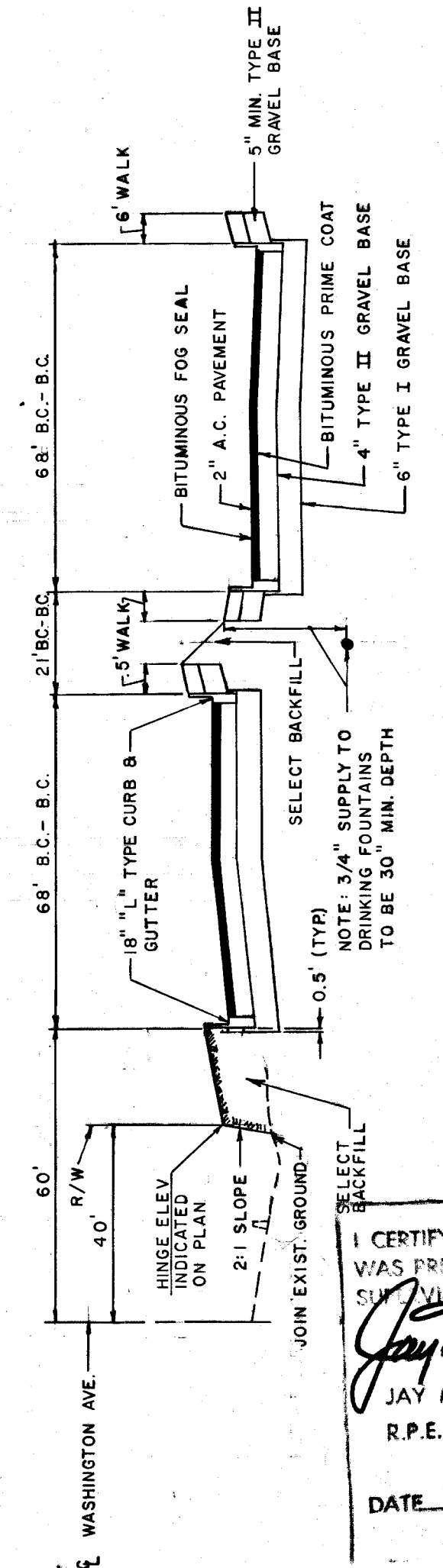


DETAIL OF "V" DITCH
SCALE: 1" = 1'



ELEVATION CONTROL

APPROXIMATE QUANTITIES - THIS SHEET			
ITEM	DESCRIPTION	UNIT	QUANTITY
127.008	INSTALL 8" STEEL PIPE DRAIN (GALV.)	L.F.	27
200.300	REMOVE TREE 4" TO 10" DIA.	EA.	1
200.400	REMOVE TREE OVER 10" DIA.	EA.	23
201.100	EXCAVATION - UNCLASSIFIED	C.Y.	943
201.100	REMOVE DROP INLETS & PIPE	EA.	2
201.100	SAWCUT A.C. PAVEMENT	L.F.	273
201.100	REMOVE A.C. CURB	L.F.	260
201.100	REMOVE FENCE & GATES	L.F.	547
302.100	TYPE I GRAVEL BASE	C.Y.	1,866
302.200	TYPE II GRAVEL BASE	C.Y.	1,050
334.004	2 INCH ASPHALTIC CONCRETE PAVEMENT	S.Y.	7,776
334.902	ASPHALT CONCRETE CURB	L.F.	196
340.013	18" L TYPE CURB & GUTTER	L.F.	2,182
340.114	CONCRETE SIDEWALK	S.F.	10,119
340.319	VALLEY GUTTER	S.F.	516
560.113	RELOCATE WATER FOUNTAIN	EA.	2
560.113	3/4" TYPE K COPPER PIPE	L.F.	158
117.000	INSTALL P.V.C. CONDUIT	LUMP	SUM
530.100	STANDARD WARNING RAIL	L.F.	20



TYPICAL SECTION THRU PARKING LOT

I CERTIFY THAT THIS PLAN WAS PREPARED UNDER MY SUPERVISION.
 JAY M. FAISLER
 R.P.E. 1642
 DATE 6/19/70

CONTRACT DRAWING
JUL 24 1970

NEV-OSD7
27-00014

REVISION NO.	DESCRIPTION	BY	DATE	APPROVAL	
REVISIONS					
CURVE DATA					
NO.	DELTA	RADIUS	TANGENT	LENGTH	LOCATION
1	90°00'00"	18.00'	18.00'	28.27'	B.C.
2	90°00'00"	20.00'	20.00'	31.41'	B.C.

CITY OF LAS VEGAS NEVADA
 DEPARTMENT OF PUBLIC WORKS
 SERVICES DIVISION
 LORENZI PARK
 PARKING LOT NO. 3

W.O. NO. 3111	F.B.K. NO. 70-1X	DATE	DRAWING NO.
SC. (H) 1" = 30'	SC. (V) 1" = 3'	06-11-70	650-19-12
DES. E. LOUVIERE	DR. R. GLOUNER - BURKE	APPROVED BY DIRECTOR OF PUBLIC WORKS	FILE NO.

APPROVED BY DIRECTOR OF PUBLIC WORKS
[Signature]

SHEET 8 OF 11