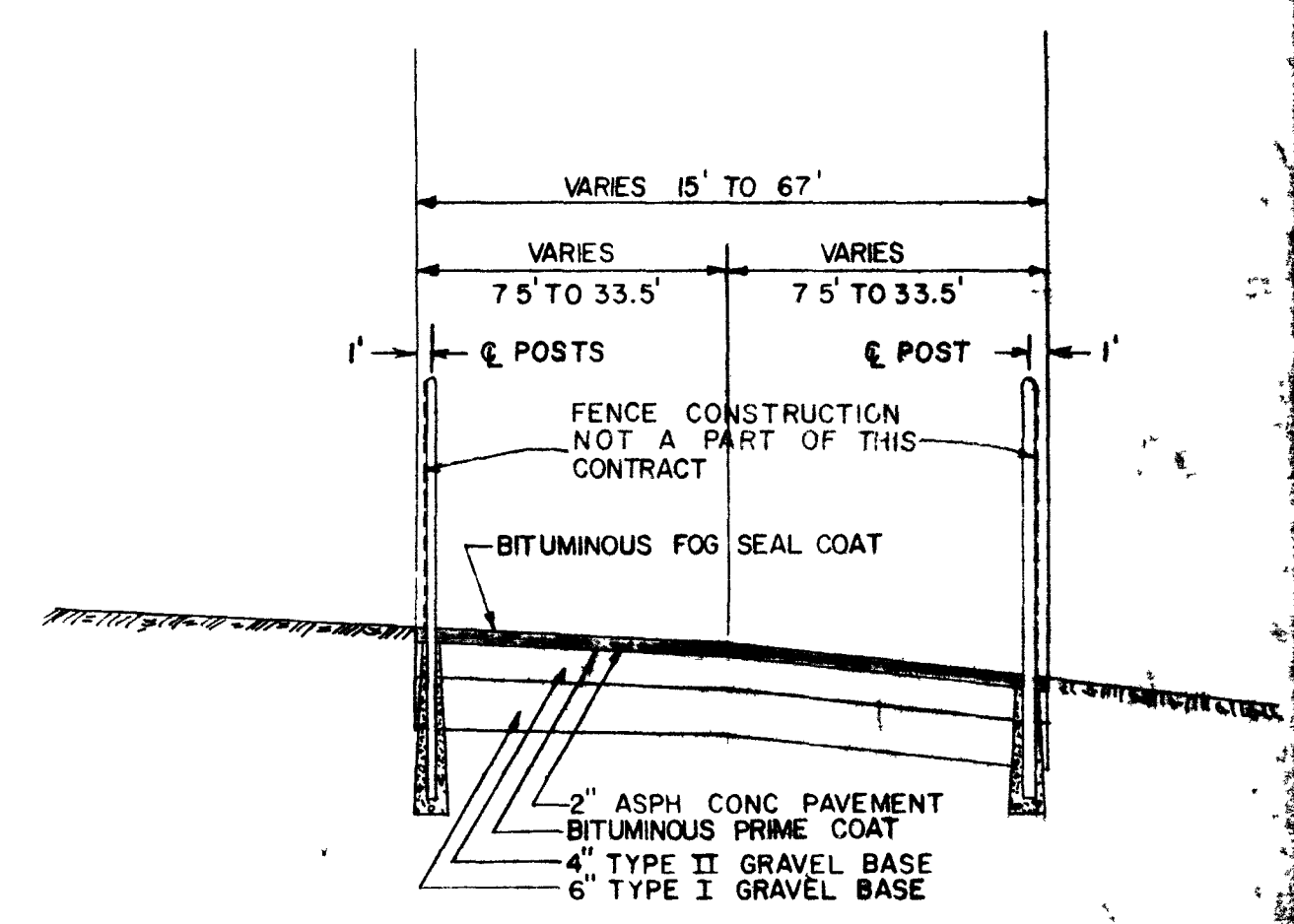
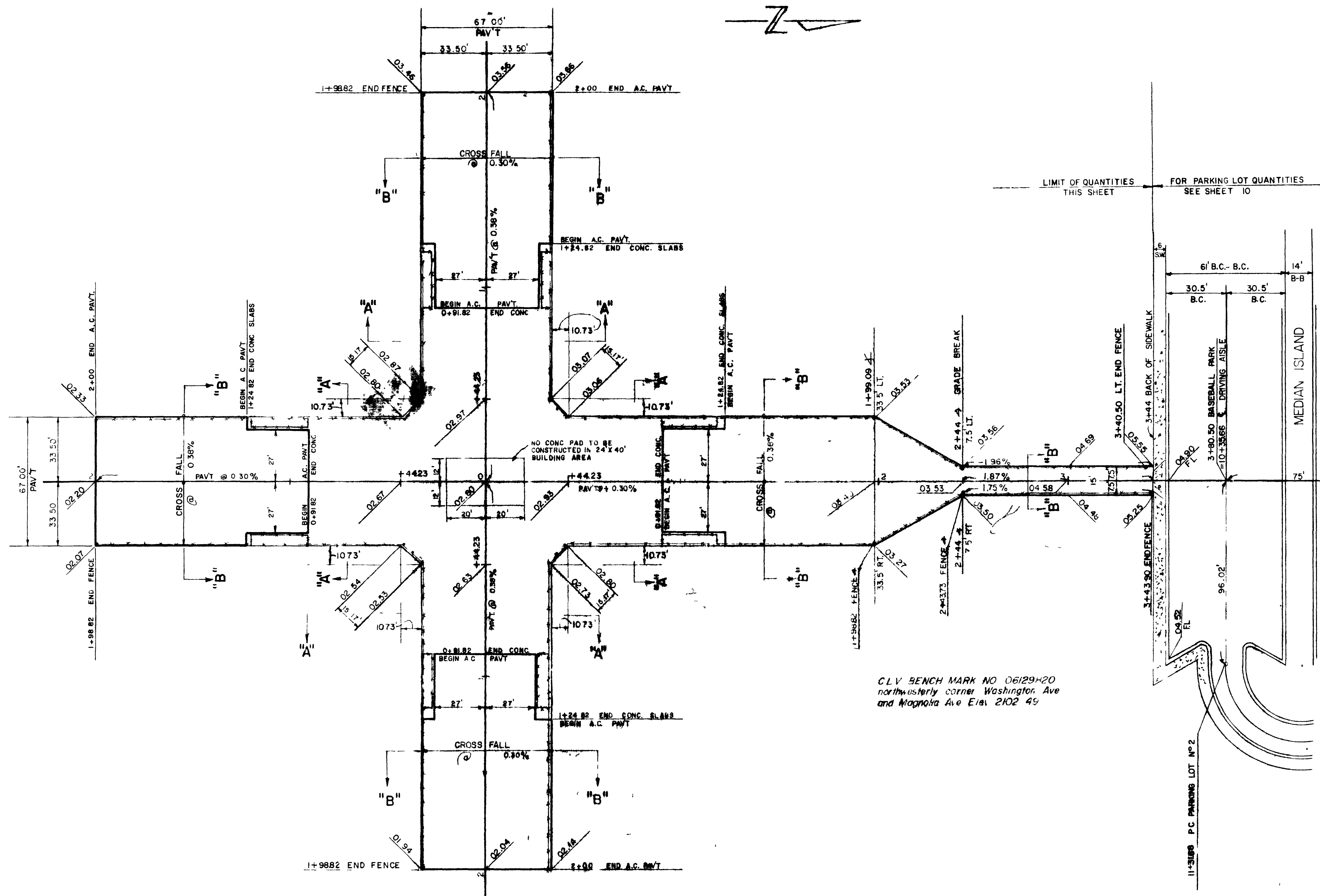
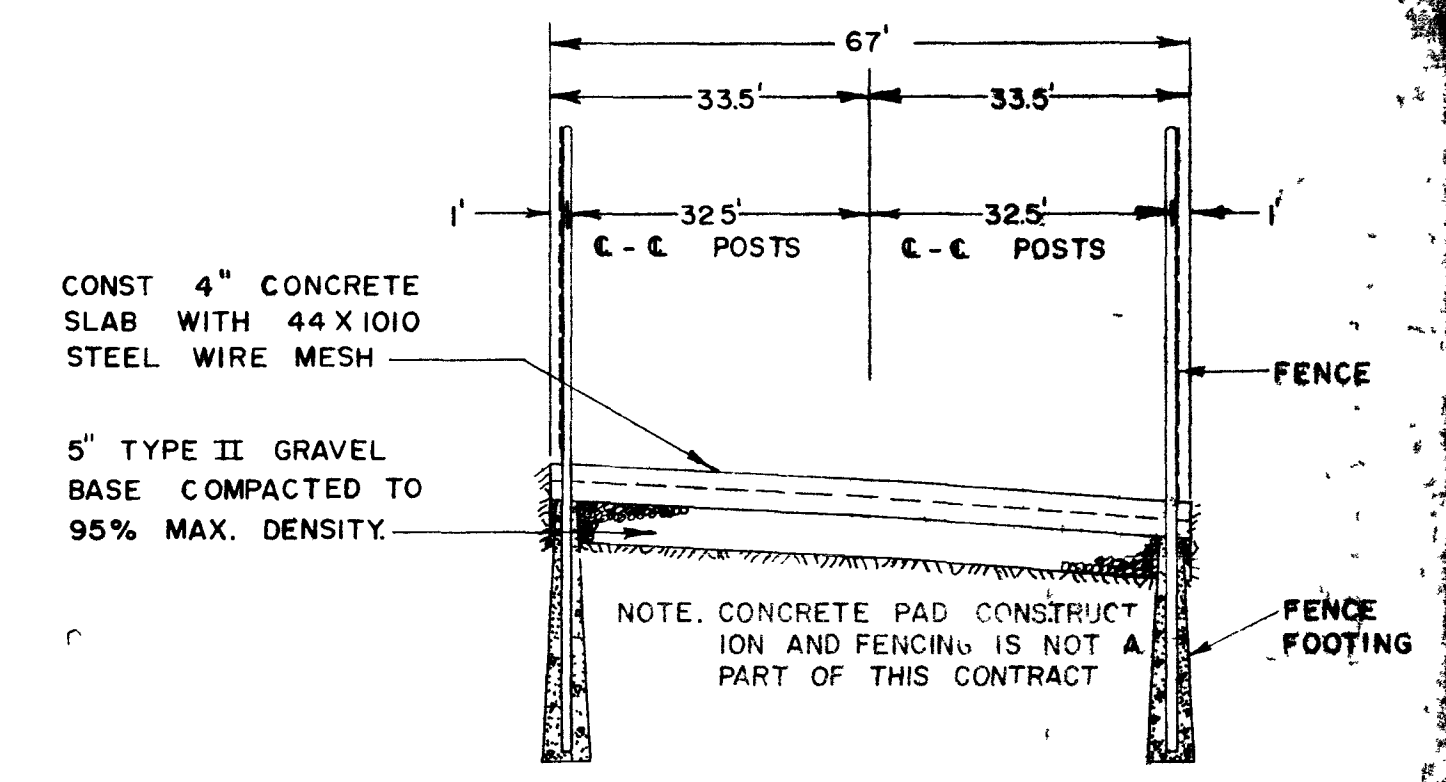


APPROXIMATE QUANTITIES - THIS SHEET			
ITEM	DESCRIPTION	UNIT	QUANTITY
201.2	PARK GRADING EXCAVATION	C.Y.	1258
334.4	2" ASPHALT CONCRETE PAV'T	S.Y.	3394
302.1	TYPE I GRAVEL BASE	C.Y.	286
302.2	TYPE II GRAVEL BASE	C.Y.	374
333.1	BITUMINOUS FOG SEAL COAT	SY.	3396



SECTION B-B



SECTION A-A

GENERAL CONSTRUCTION NOTES
 1. THE CONSTRUCTION TO BE PERFORMED ON THIS SHEET IS THE CONSTRUCTION OF ASPHALT CONCRETE PAV'T AREAS ONLY. CONSTRUCTION OF CONCRETE PADS AND FENCE INSTALLATION ARE NOT A PART OF THIS CONTRACT

CONTRACT DRAWING
 BFC 23 1967

APPROVED		
DATE	BY	DATE
12/18/69	[Signature]	12/18/69
12/18/69	[Signature]	12/18/69
12/18/69	[Signature]	12/18/69
12/18/69	[Signature]	12/18/69
12/18/69	[Signature]	12/18/69
12/18/69	[Signature]	12/18/69
12/18/69	[Signature]	12/18/69

NEV. OSD-7

REVISION NO.	DESCRIPTION	BY	DATE	APPROVAL

REVISIONS

CITY OF LAS VEGAS NEVADA
 DEPARTMENT OF PUBLIC WORKS
 SERVICES DIVISION

LORENZI PARK PARK AREA
 BASEBALL PARK AREA

W.O. NO. 3111	F.B.K. NO. FB	DATE	DRAWING NO.
SC. (H) 1" = 30'	SC. (V)	10-2-69	650-19-10A
DES. LOUVIERE	DR. L.W. JMC	FILE NO.	
APPROVED BY DIRECTOR OF PUBLIC WORKS	[Signature]	DEC 18 1969	SHEET 11 OF 16