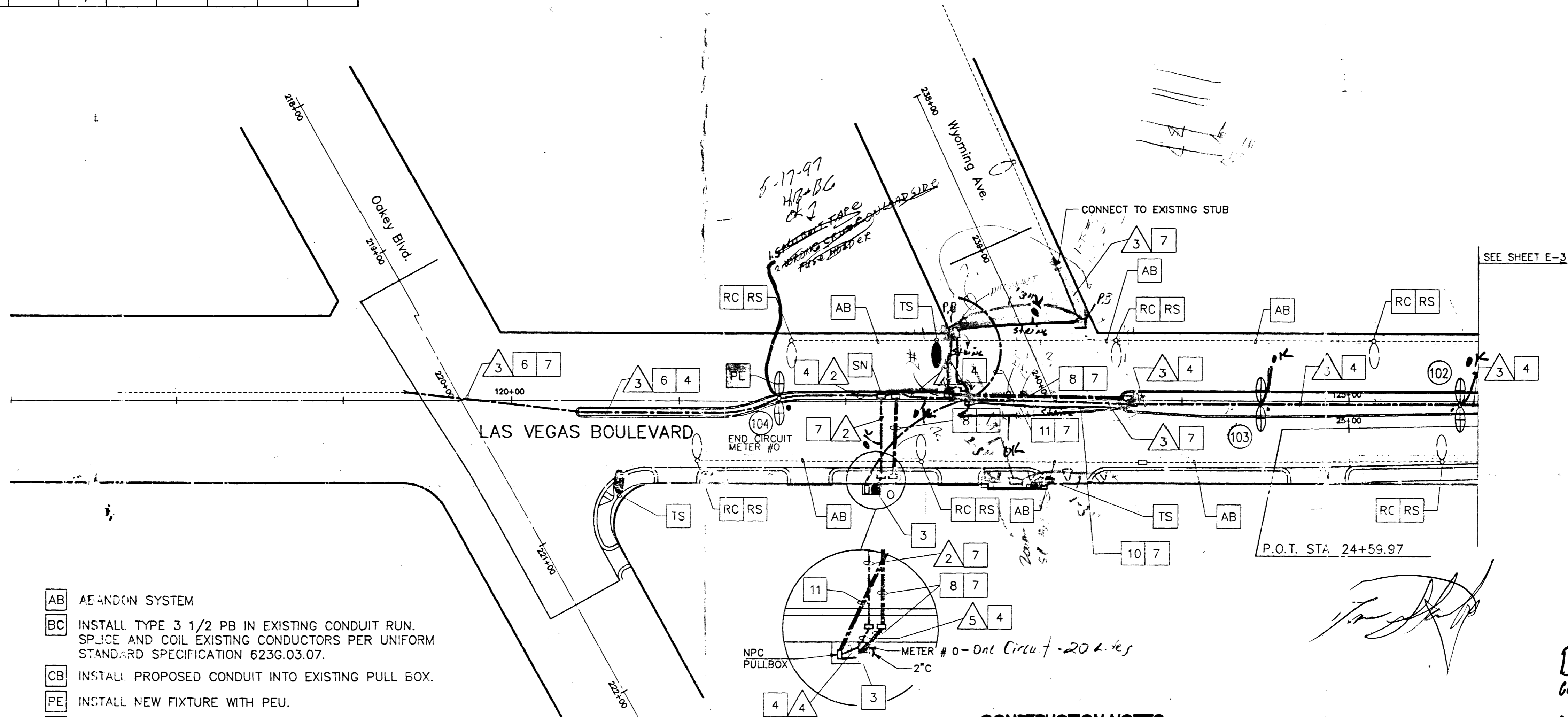


CONDUCTOR SCHEDULE									
CONDUCTOR TYPE	FUNCTION	1	2	3	4	5	6	7	8
#10 AWG	PHOTOELECTRIC CONTROL UNIT		3			6	3	3	
#8 AWG	OUTLET SERVICE (WHT & BLU)	2					2	6	
#8 AWG	NEUTRAL (GREEN)	1	1	1		2	1	3	
#4 AWG	ELECTRICAL SERVICE	2	2	2		4	2	6	
#3/0 AWG	ELECTRICAL SERVICE POINT CONNECTION				3				
PULLROPE	SPARE								1
	CONDUIT SIZE	2"	2"	1 1/4"	2"	2"	2"	2"	2"

SERVICE ENCLOSURE # 0 (PROPOSED)  
120/240V, SINGLE PHASE, THREE WIRE, SINGLE METER SERVICE  
200A, 240V, 2P MAIN CIRCUIT BREAKER

POSITION	BRANCH CIRCUIT BREAKER			ADDITIONAL COMPONENTS			STREET LIGHT LOAD (VA)	TREE PIT LIGHT LOAD (VA)	NEW ELEMENTS CONNECTED TO CIRCUIT
	CURRENT	VOLTAGE	# OF POLES	FUNCTION	CURRENT	# OF POLES			
1	60A	240V	2	STREET LIGHTING	60A	2	499/2	-	93, 94, 95, 96, 97, 98, 99, 102, 103, 104
2	-	-	-	STREET LIGHTING	-	-	-	-	-
3	15A	120V	1	LIGHTING TEST SWITCH	-	-	-	-	ACTIVATES CONTACTOR FOR STREET LIGHTS.

**ELECTRIC LOAD TABLE**



- AB ABANDON SYSTEM
- BC INSTALL TYPE 3 1/2 PB IN EXISTING CONDUIT RUN. SPICE AND COIL EXISTING CONDUCTORS PER UNIFORM STANDARD SPECIFICATION 6236.03.07.
- CB INSTALL PROPOSED CONDUIT INTO EXISTING PULL BOX.
- PE INSTALL NEW FIXTURE WITH PEU.
- RC EXISTING LIGHT POLE FOUNDATION TO BE CUT A MINIMUM OF 18" BELOW GRADE AND THE ANCHOR BOLTS BURNED OFF AT THE SAME 18" DEPTH.
- RS REMOVE AND SALVAGE LIGHT POLE, MAST ARM, FIXTURE AND EX-STING CONDUCTORS TO CLV ELECTRIC YARD.
- SN SPICE NEW CONDUCTORS.
- ST STUB AND CAP CONDUIT.
- TS TRAFFIC SIGNAL LUMINAIRE; NOT A PART OF STREET LIGHT CIRCUITS.

**CONSTRUCTION NOTES**

- 3 CIRCUIT # 0  
INSTALL 120V/240V, SINGLE PHASE, THREE WIRE, SINGLE METERED SERVICE WITH A 200A, 240V, 2P MAIN IN A PAD MOUNTED NEMA TYPE 3R ENCLOSURE (REFER TO UNIFORM STD. DWG. #328). PROVIDE THE FOLL.  
  - ONE 60A, 240V, 2P BRANCH CB FOR STREET LIGHTING.
  - ONE 15A, 120V, 1P BRANCH CB FOR EACH LIGHTING TEST SWITCH. (ONE TEST SWITCH PER CONTACTOR)
  - ONE 60A, 2P CONTACTOR FOR STREET LIGHTING.
 LIGHTING CONTACTORS FOR STREETLIGHTING SHALL BE TIED INTO NEW STREET LIGHTING PEU AT POLE 104.  
 CONTRACTOR SHALL PROVIDE ALL LABOR AND EQUIPMENT NECESSARY FOR SERVICE CONNECTION INCLUDING CONDUIT AND CONDUCTORS UP TO TRANSFORMER. PROVIDE ADDITIONAL 2" CONDUIT STUB FROM CONTROLLER FOR FUTURE USE.
- 4 TRENCH CONDUIT IN SOIL.
- 6 INSTALL 1 1/4" C AND CONNECT TO EXISTING STREET LIGHT STUB SOUTH OF OAKLEY BLVD. DO NOT CONNECT CONDUCTORS AT EITHER END.
- 7 TRENCH CONDUIT IN EXISTING PAVEMENT OR SIDEWALK.
- 8 INSTALL 2-2" & 1 1/4" PVC (SCH 40) CONDUIT WITH PULL ROPE AND # 3 1/2 PULLBOX AT EACH END. PLUG ENDS TO THE SATISFACTION OF THE ENGINEER.
- 10 INSTALL 2-4" PVC (SCH 40) IRRIGATION SLEEVES AND 2-2" PVC (SCH 40) ELECTRICAL SLEEVES WITH PULL ROPE. CITY OF LAS VEGAS EXTEND SLEEVES MIN. 3' BEHIND CURB OR AS DIRECTED BY THE ENGINEER. TAPE ENDS AND STAKE LOCATION. SEE SLEEVE DETAIL, SHEET E-1.
- 11 INSTALL 4" NEVADA POWER CONDUIT WITH PULL ROPE AND PULLBOXES PER NEVADA POWER SPECIFICATIONS.

**D.E.C.I.**  
CONTRACT 2 & 4  
**AS-BUILTS**

Avoid cutting underground utility lines. It's costly.  
**Call before you Dig.**  
CITY OF LAS VEGAS  
Muckel  
1-800-227-2600

NO.	REVISIONS	DATE	BY
45759			

**Kimley-Horn and Associates, Inc.**  
 Las Vegas, Nevada © 1996

DESIGNED BY RKS  
 DRAWN BY CDR  
 CHECKED BY JBT  
 NOTE BOOK NO.

**DOWNTOWN CORRIDOR IMPROVEMENTS**  
 CITY OF LAS VEGAS DEPT. OF PUBLIC WORKS  
 LAS VEGAS, NEVADA  
 CONTRACT 2 - 4TH STREET  
 OAKLEY BLVD. TO CHARLESTON BLVD.

DATE 6/96  
 SCALE 1"=40'

**STREET LIGHTING PLAN**  
 STA. 24+59.97 TO STA. 25+77

DWCS. NO. 107-V-2288B  
 FILE NO. 9903.02  
 SHEET 42 OF 46  
**E-2**