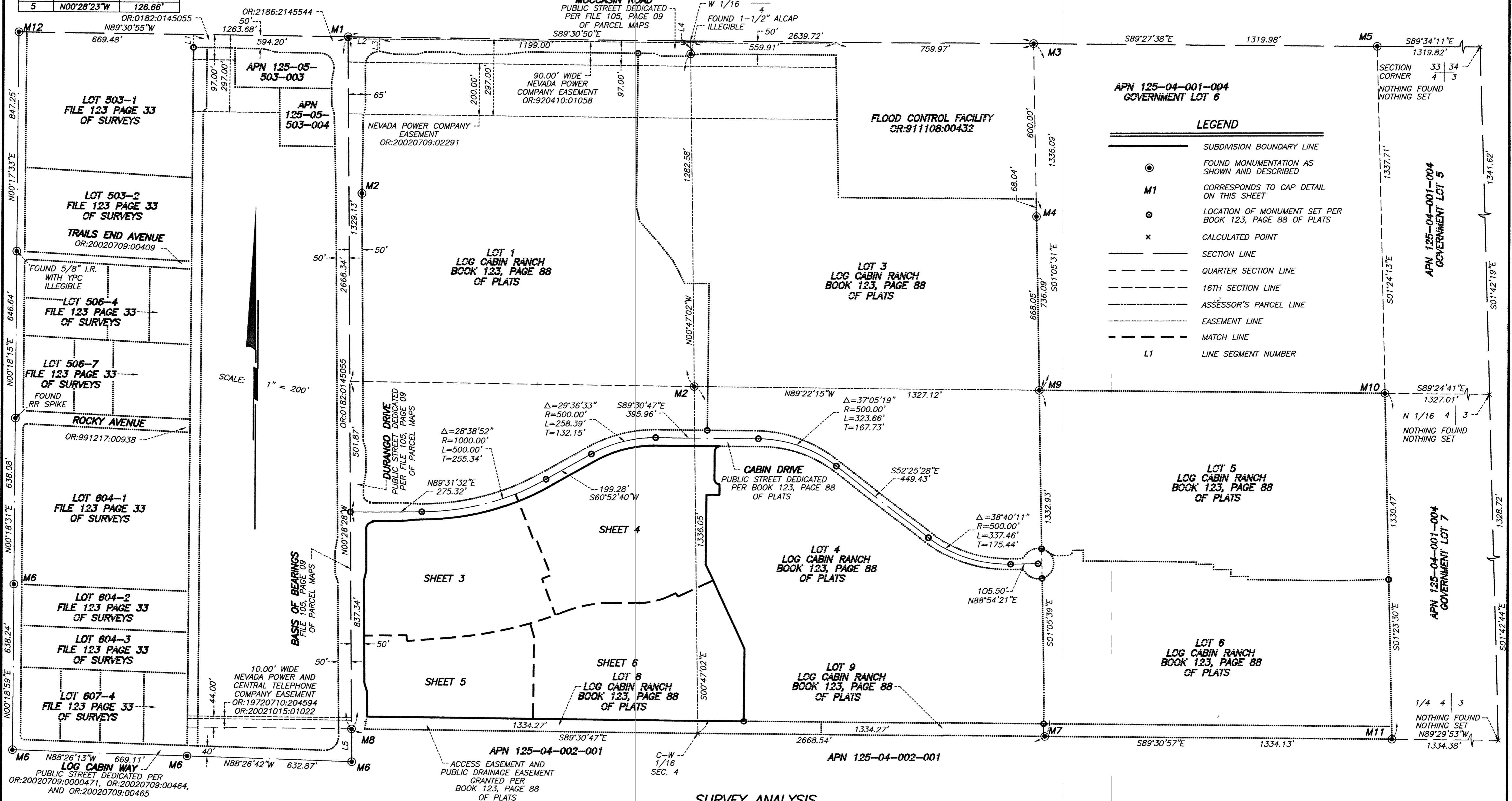


FINAL MAP OF LOG CABIN RANCH UNIT 2

A PLANNED DEVELOPMENT AND COMMON INTEREST COMMUNITY

BEING A SUBDIVISION OF LOT 2 OF "LOG CABIN RANCH" AS SHOWN BY MAP THEREOF ON FILE IN BOOK 123, PAGE 88 OF PLATS
IN THE CLARK COUNTY RECORDER'S OFFICE, CLARK COUNTY, NEVADA, LYING WITHIN THE NORTHWEST QUARTER (N1/4) OF SECTION 4,
TOWNSHIP 19 SOUTH, RANGE 60 EAST, M.D.M., CITY OF LAS VEGAS, CLARK COUNTY, NEVADA

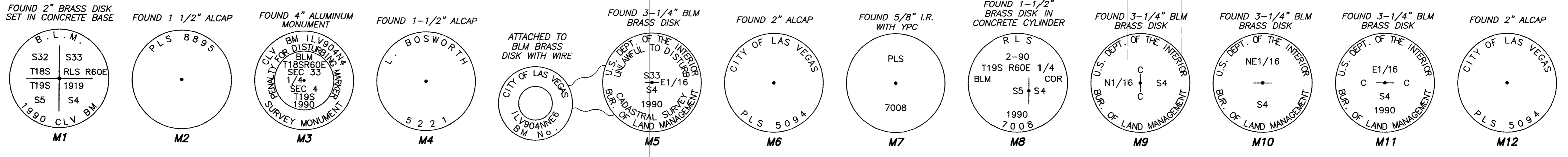
LINE	BEARING	DISTANCE
1	S00°18'57"W	50.00'
2	S89°30'50"E	120.84'
3	S00°29'10"W	55.00'
4	N00°47'02"W	50.01'
5	N00°28'23"W	126.66'



LEGEND

- SUBDIVISION BOUNDARY LINE
- FOUND MONUMENTATION AS SHOWN AND DESCRIBED
- M1 CORRESPONDS TO CAP DETAIL ON THIS SHEET
- LOCATION OF MONUMENT SET PER BOOK 123, PAGE 88 OF PLATS
- x CALCULATED POINT
- SECTION LINE
- - - QUARTER SECTION LINE
- - - 16TH SECTION LINE
- - - ASSESSOR'S PARCEL LINE
- - - EASEMENT LINE
- - - MATCH LINE
- L1 LINE SEGMENT NUMBER

SURVEY ANALYSIS



MONUMENT DETAILS NOT TO SCALE

B:\MERCHANT\06-05 10:35:56 @ 050 (Office)\Projects\767\022\CRVF2-02.dwg PLOTTED: BAM 5.14.04