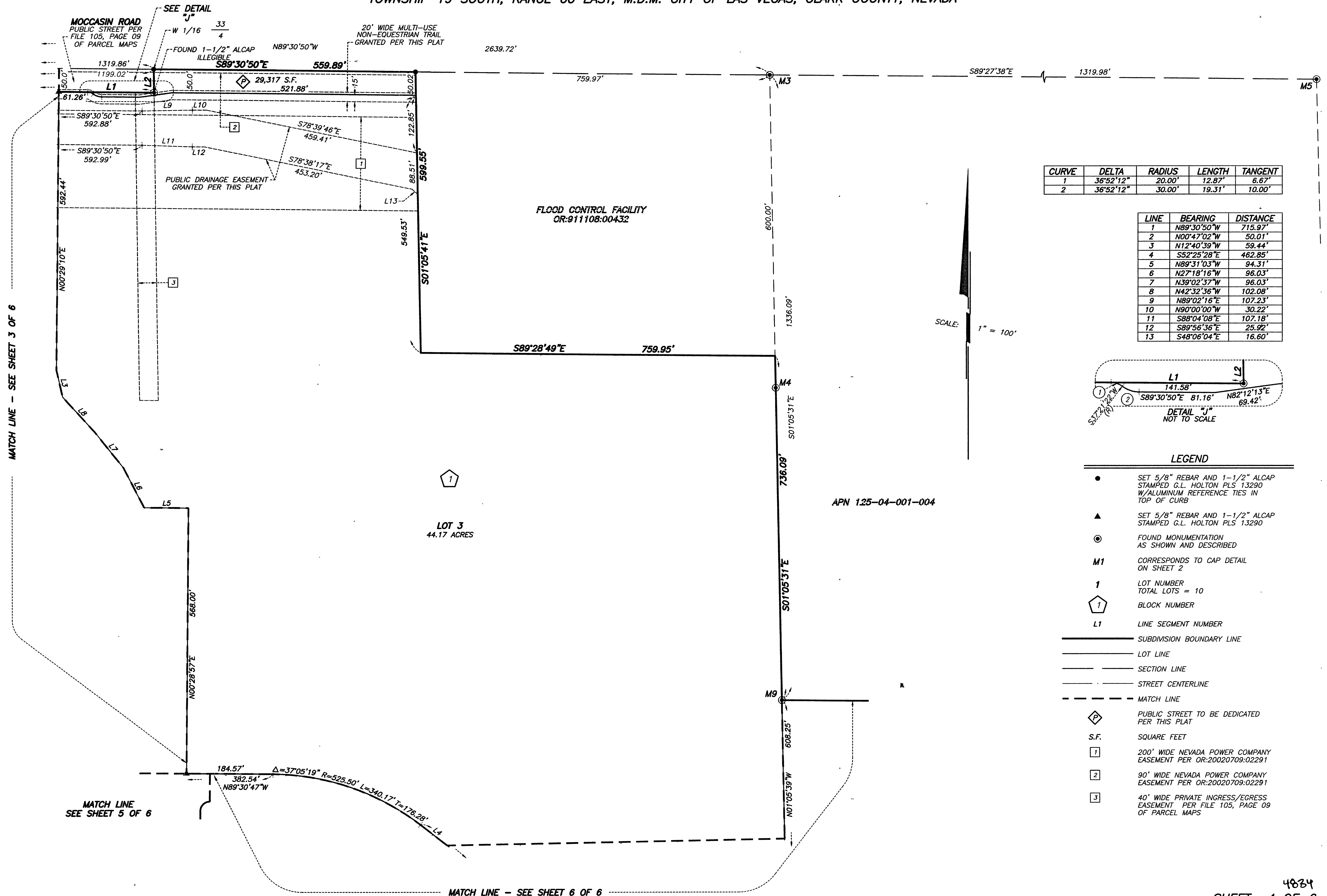


FINAL MAP OF LOG CABIN RANCH

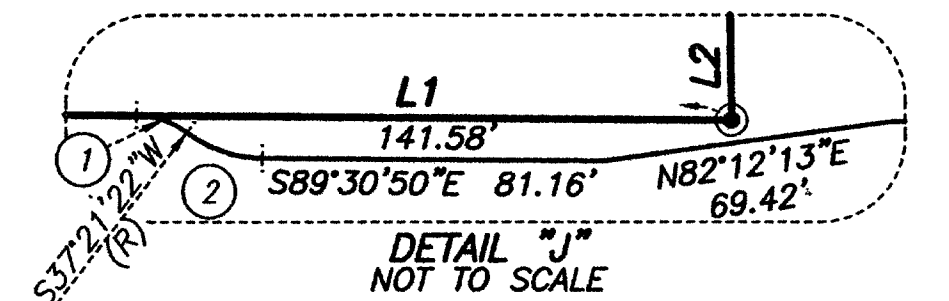
A COMMON INTEREST COMMUNITY

BEING A SUBDIVISION OF A PORTION OF
THE NORTH HALF (N1/2) OF SECTION 4 AND THE EAST HALF (E1/2) OF SECTION 5,
TOWNSHIP 19 SOUTH, RANGE 60 EAST, M.D.M. CITY OF LAS VEGAS, CLARK COUNTY, NEVADA



CURVE	DELTA	RADIUS	LENGTH	TANGENT
1	36°52'12"	20.00'	12.87'	6.67'
2	36°52'12"	30.00'	19.31'	10.00'

LINE	BEARING	DISTANCE
1	N89°30'50"W	715.97'
2	N00°47'02"W	50.01'
3	N12°40'39"W	59.44'
4	S52°25'28"E	462.85'
5	N89°31'03"W	94.31'
6	N27°18'16"W	96.03'
7	N39°02'37"W	96.03'
8	N42°32'36"W	102.08'
9	N89°02'16"E	107.23'
10	N80°00'00"W	30.22'
11	S88°04'08"E	107.18'
12	S89°56'36"E	25.92'
13	S48°06'04"E	16.60'



LEGEND

- SET 5/8" REBAR AND 1-1/2" ALCAP STAMPED G.L. HOLTON PLS 13290 W/ALUMINUM REFERENCE TIES IN TOP OF CURB
- ▲ SET 5/8" REBAR AND 1-1/2" ALCAP STAMPED G.L. HOLTON PLS 13290
- ⊙ FOUND MONUMENTATION AS SHOWN AND DESCRIBED
- M1 CORRESPONDS TO CAP DETAIL ON SHEET 2
- 1 LOT NUMBER
TOTAL LOTS = 10
- 1 BLOCK NUMBER
- L1 LINE SEGMENT NUMBER
- SUBDIVISION BOUNDARY LINE
- LOT LINE
- SECTION LINE
- STREET CENTERLINE
- - - MATCH LINE
- ◇ PUBLIC STREET TO BE DEDICATED PER THIS PLAT
- S.F. SQUARE FEET
- 1 200' WIDE NEVADA POWER COMPANY EASEMENT PER OR-20020709-02291
- 2 90' WIDE NEVADA POWER COMPANY EASEMENT PER OR-20020709-02291
- 3 40' WIDE PRIVATE INGRESS/EGRESS EASEMENT PER FILE 105, PAGE 09 OF PARCEL MAPS