

**Call before you Dig**  
1-800-227-2800  
1-702-455-7511  
1-702-228-6611

**Call before you Overhead**  
1-800-227-2800  
1-702-455-7544  
1-702-593-6111

**SAFETY ALERT**  
Call before you Overhead

SEE RIGHT  
MATCH LINE "ER" 13+50.00

**CAUTION:**  
HIGH PRESSURE GAS LINE. CONTRACTOR TO CALL SOUTHWEST GAS AT 365-2296 FOR STANDBY WHEN EXCAVATING OVER OR NEAR HIGH PRESSURE GAS.

**TEST HOLE DATA**

TEST HOLE NUMBER	ELEVATIONS		UTILITY
	DEPTH (FT)	TOP/INV	
1	4.57	(2347.23 TOP)	4" GAS
1A	9.51	(2342.56 TOP)	18" SD
2	4.84	(2347.42 TOP)	4" GAS
3	4.70	(2346.92 TOP)	6" GAS
4	2.86	(2347.52 TOP)	4" GAS
5	5.18	(2345.05 TOP)	6" GAS
6	3.95	(2347.59 TOP)	1" GAS

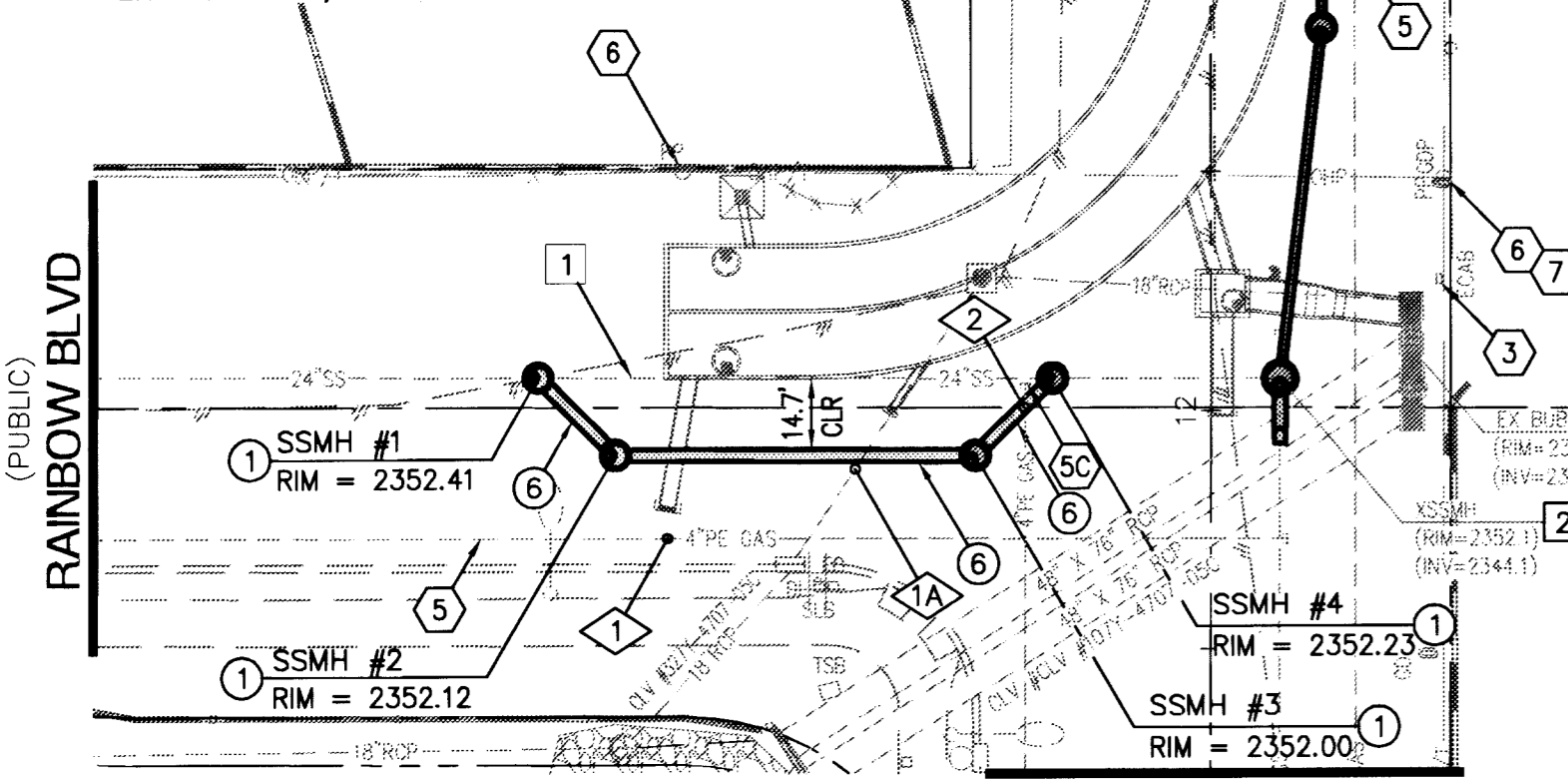
**UTILITY NOTES:**

- 3 UNDERGROUND ELECTRIC TO REMAIN.
- 5 EXISTING GAS TO REMAIN.
- 5A EXISTING GAS TO BE RELOCATED BY OTHERS.
- 5B GAS VALVE TO BE ADJUSTED BY OTHERS.
- 5C EXISTING GAS TO BE ABANDONED BY OTHERS.
- 6 EXISTING POLES AND AERIAL FACILITIES TO REMAIN.
- 7 EXISTING AERIAL CATV TO REMAIN.

**CONSTRUCTION NOTES:**

- 1 "ER" 12+07.16, 140.23' LT
- "ER" 11+90.98, 124.12' LT
- "ER" 11+90.83, 49.12' LT
- "ER" 12+06.87, 33.02' LT
- "ER" 12+80.00, 23.08' RT
- "ER" 16+28.79, 23.08' RT
- "ER" 18+59.00, 23.08' RT

CONSTRUCT 60" SSMH PER DCSWCS STD DWG SD-1.



- 2 "ER" 12+06.72, 14.41' RT
  - 4 "ER" 12+06.72, 14.41' RT TO "ER" 19+00.00, 23.08' RT
  - 6 "ER" 12+07.16, 140.23' LT TO "ER" 12+06.87, 33.02' LT
  - 10 "ER" 11+93.15, 14.38' RT
- CONSTRUCT 72" SANITARY SEWER CONTROL MANHOLE PER DETAIL SHEET SS-6.
- CONSTRUCT 18" PVC (C-905) SANITARY SEWER.
- CONSTRUCT 30" PVC (C-905) SANITARY SEWER.
- CONNECT 30" X 27" ECCENTRIC REDUCER TO EXISTING SANITARY SEWER. (SEE DETAIL ON SS-6).

**NOTE:**

SEE PP-1 FOR PROPOSED RCB'S

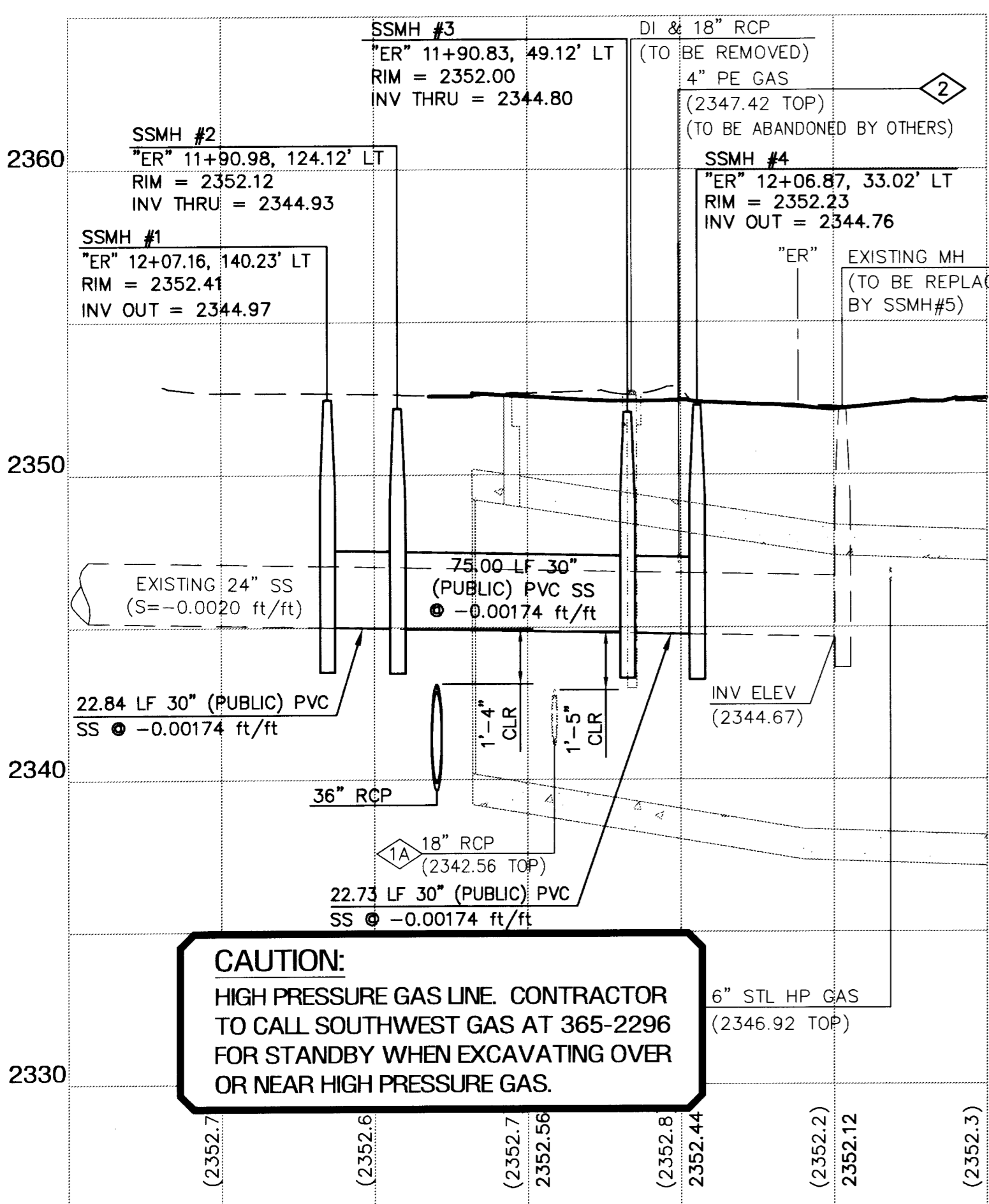
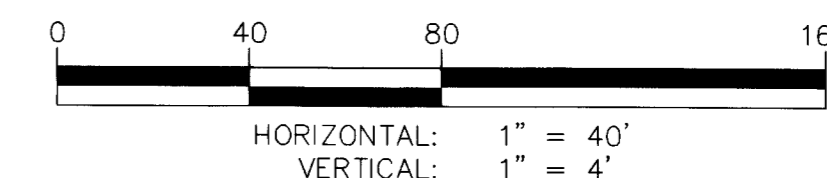
**REMOVAL ITEMS:**

- 1 "ER" 12+07.16, 140.23' LT REMOVE EXISTING 24" SANITARY SEWER.
- "ER" 12+06.87, 33.02' LT
- 2 "ER" 12+05.47, 14.40' RT REMOVE EXISTING SANITARY SEWER MANHOLE.

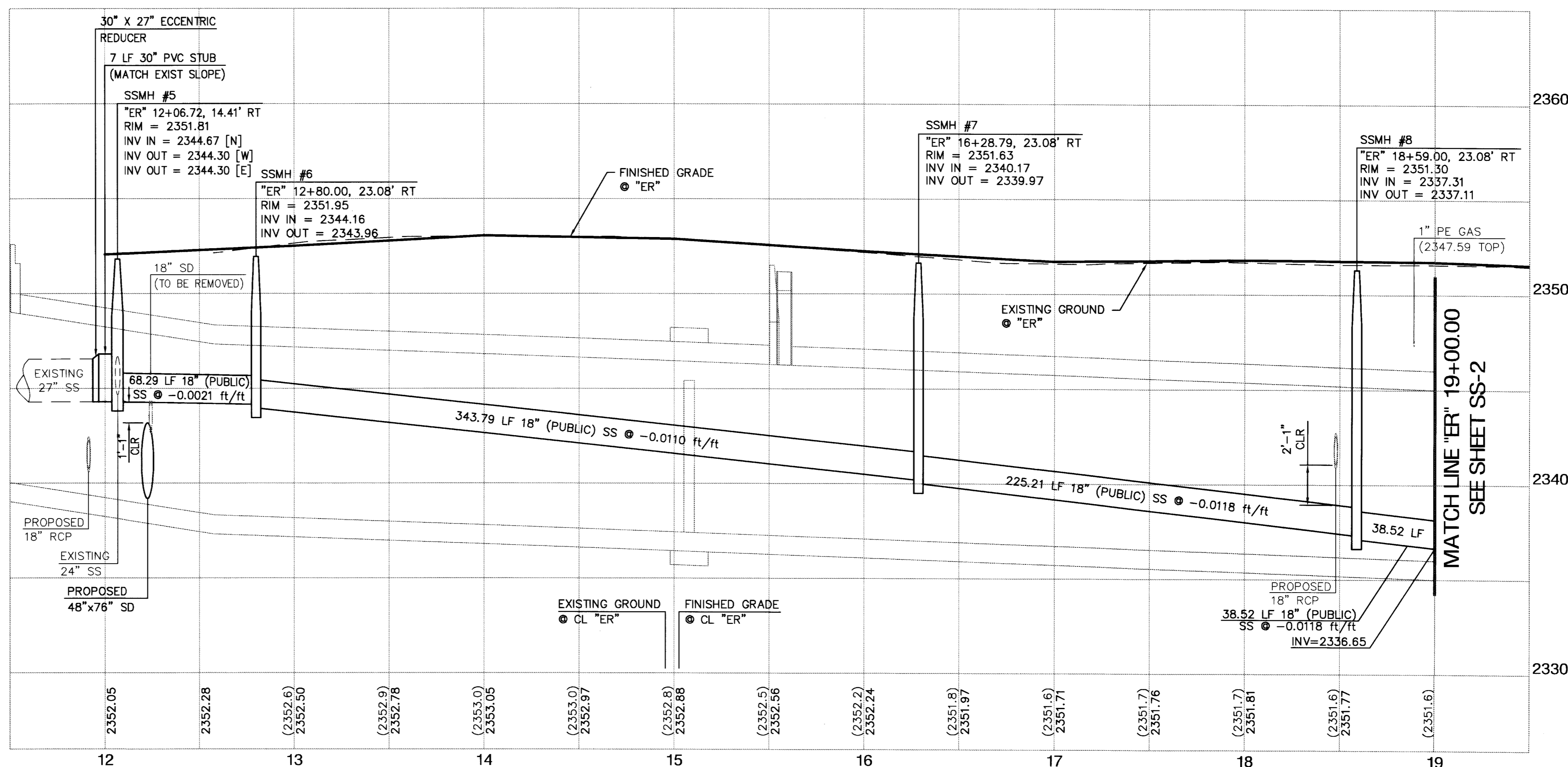
APPROVED FOR CONSTRUCTION

*[Signature]*  
LAS VEGAS VALLEY WATER DISTRICT  
PROJECT #113703  
DATE 10-9-07

**CAUTION:**  
CONTRACTOR TO VERIFY ALL EXISTING UNDERGROUND UTILITY LOCATIONS AND ELEVATIONS PRIOR TO CONSTRUCTION.



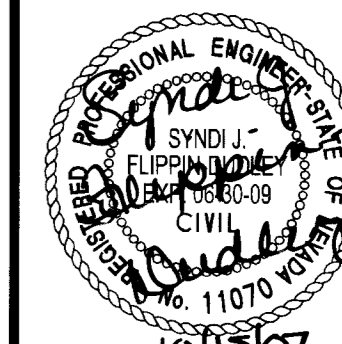
**CAUTION:**  
HIGH PRESSURE GAS LINE. CONTRACTOR TO CALL SOUTHWEST GAS AT 365-2296 FOR STANDBY WHEN EXCAVATING OVER OR NEAR HIGH PRESSURE GAS.



**DEPARTMENT OF PUBLIC WORKS**

PROJECT:  
LAS VEGAS WASH MIDDLE BRANCH  
ELKHORN STORM DRAIN  
RAINBOW BOULEVARD TO  
TORREY PINES DRIVE

SHEET:  
18" SANITARY SEWER  
PLAN AND PROFILE  
"ER" 12+05.00 TO "ER" 19+00.00



SHEET:  
SS-1  
24 OF 41  
CLV DRAWING NO:  
327V275

SCALE (H): AS SHOWN | SCALE (V): AS SHOWN | WA #  
FIELD BOOK # | DATE: 10/15/2007 | DESIGN BY: FRK  
THE Louis Berger Group, INC.  
500 E. Amigo Court, Suite 100 | Voice: 702-736-6632  
Las Vegas, Nevada 89119 | Fax: 702-736-0704

NO	DATE	REVISION	APPROVED

LAS VEGAS WASH - MIDDLE BRANCH ELKHORN STORM DRAIN