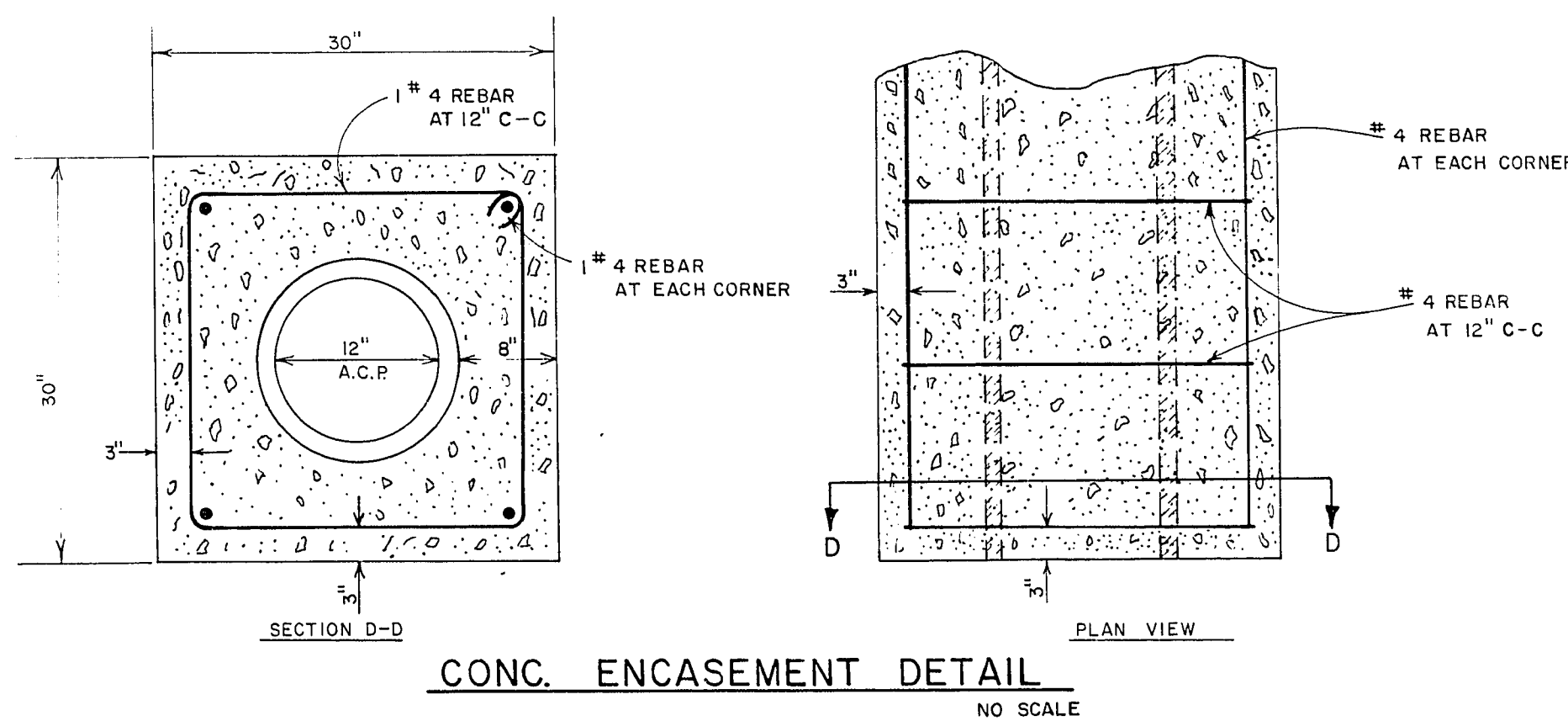
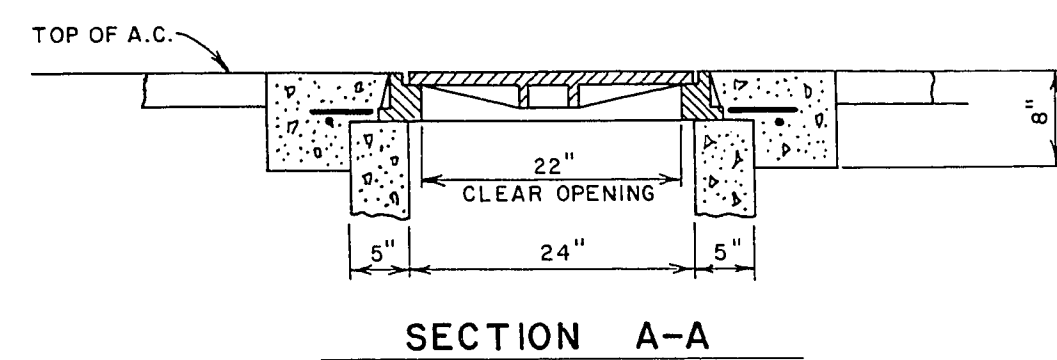
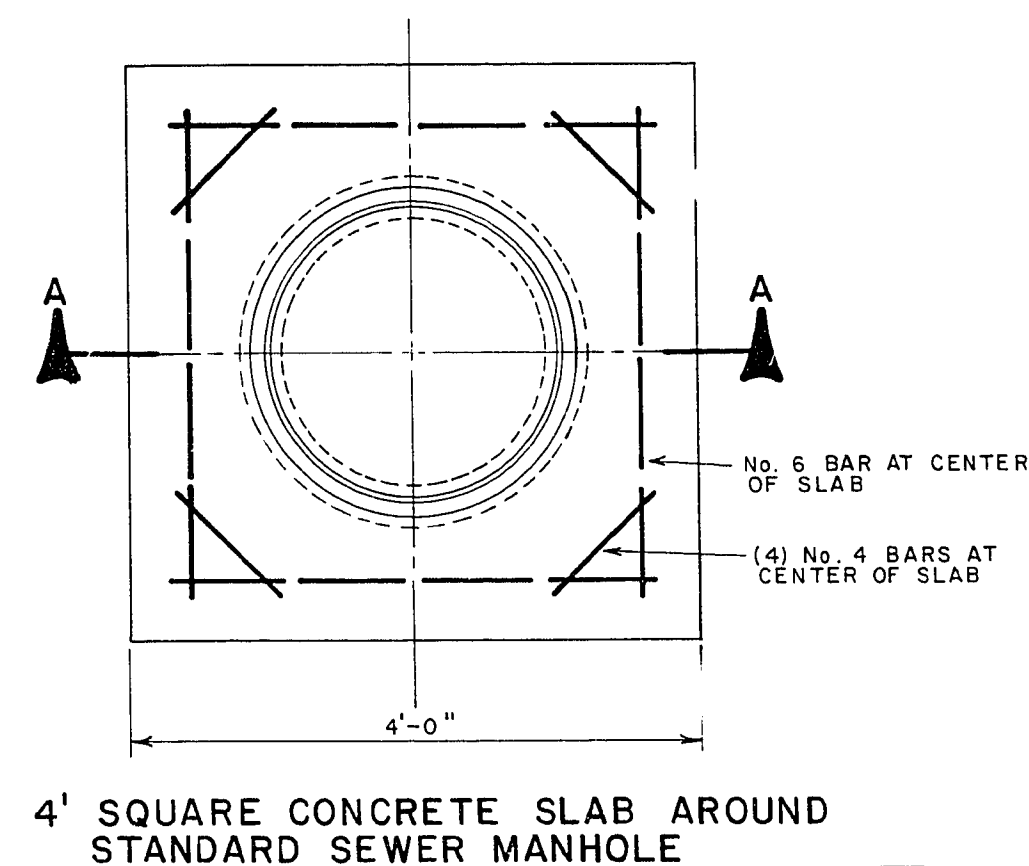


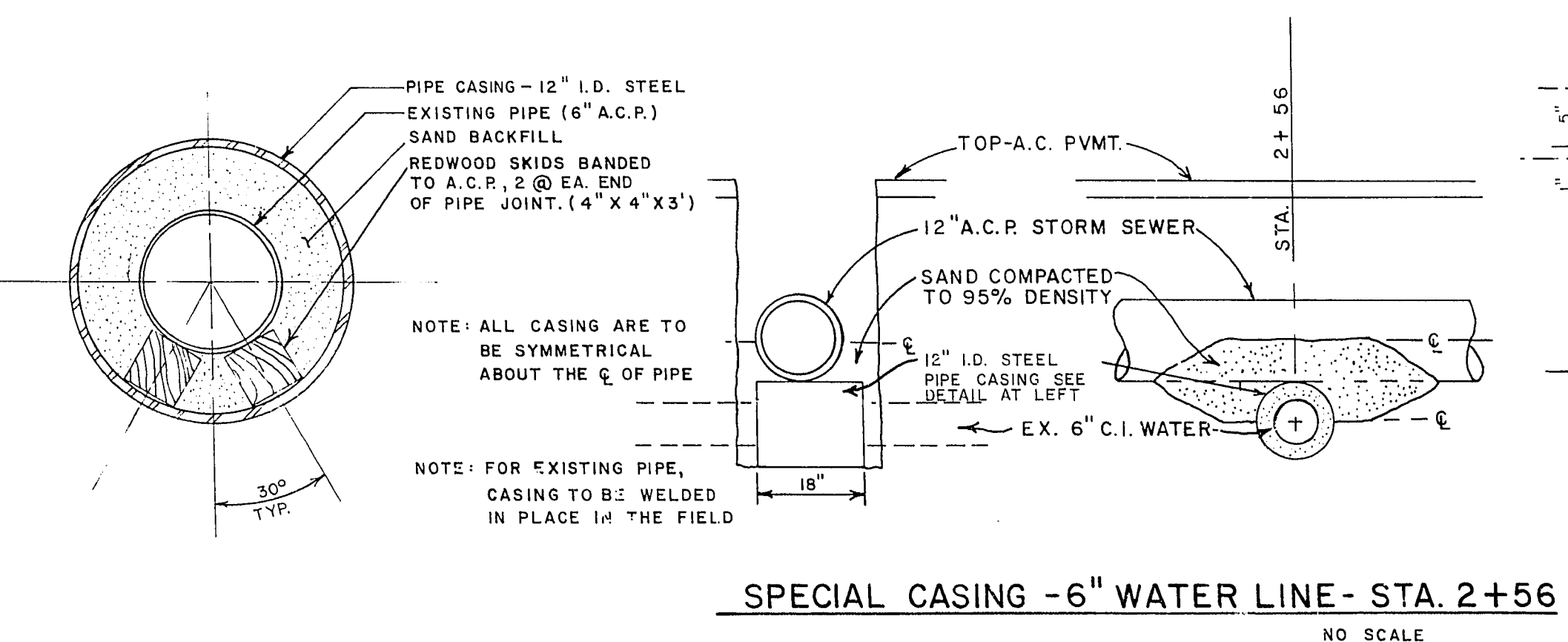
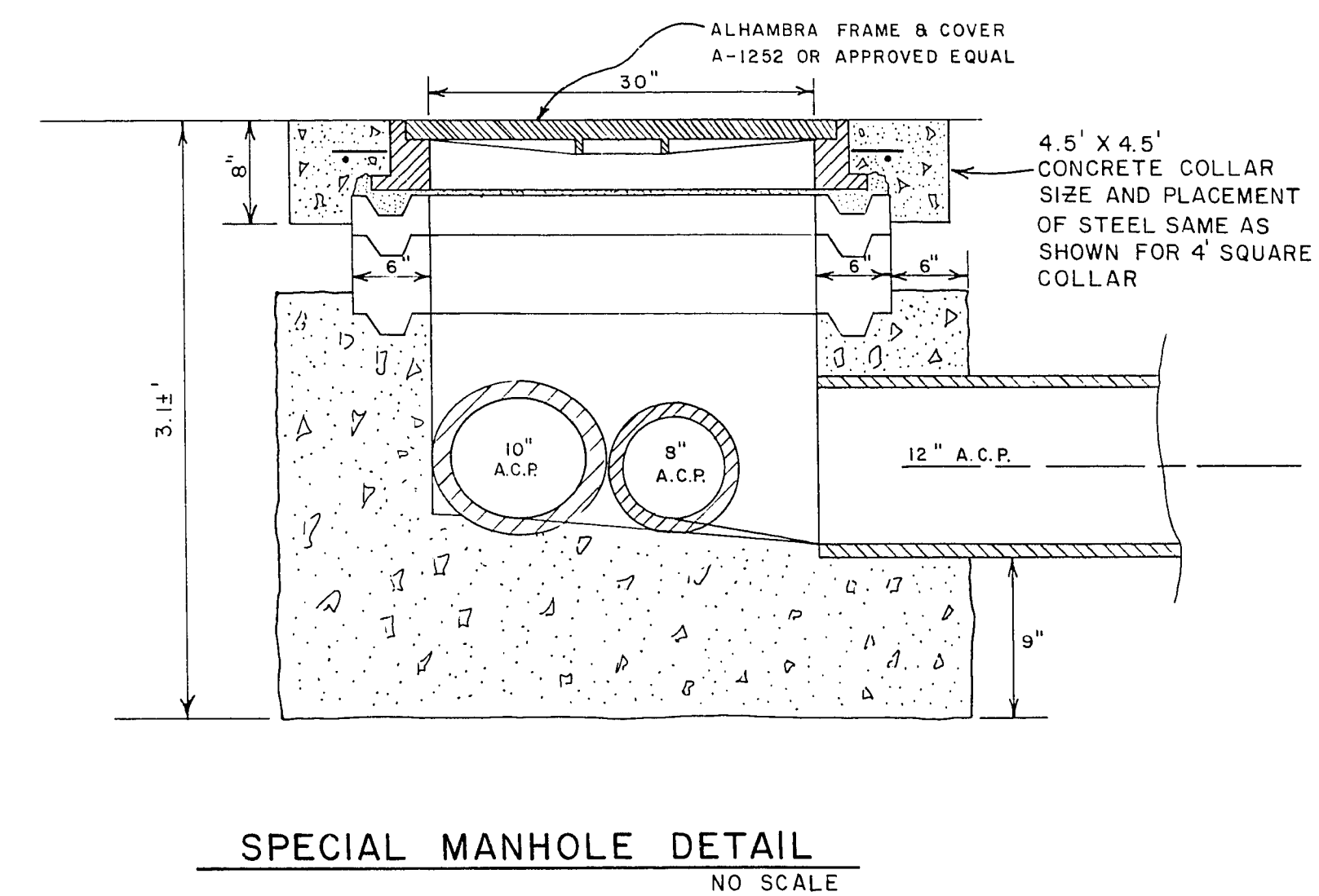
GENERAL NOTES

- ALL CONSTRUCTION SHALL BE IN ACCORDANCE WITH THE STANDARD DRAWINGS AND "UNIFORM STANDARD SPECIFICATIONS FOR PUBLIC WORKS CONSTRUCTION" ISSUE OF JANUARY 1978, OF THE CITY OF LAS VEGAS, NEVADA, UNLESS OTHERWISE SPECIFIED BY NOTE ON THE PLANS OR AS DIRECTED BY THE ENGINEER.
- ALL UTILITY COMPANIES SHALL BE NOTIFIED AT LEAST 48 HOURS PRIOR TO BEGINNING CONSTRUCTION.
- THE EXISTENCE AND LOCATION OF UNDERGROUND UTILITY PIPES OR STRUCTURES SHOWN ON PLANS FOR CONTRACTORS' CONVENIENCE WERE OBTAINED BY A SEARCH OF AVAILABLE RECORDS. THE CITY OF LAS VEGAS ASSUMES NO RESPONSIBILITY FOR UTILITIES OR STRUCTURES NOT OF RECORD, OR NOT IN THE LOCATION OF RECORD. THE CONTRACTOR'S LIABILITY REGARDING ANY DAMAGED UTILITY IS SET FORTH IN SUBSECTION 105.06 AND 107.17 OF THE "STANDARD SPECIFICATION".
- THE CONTRACTOR IS REQUIRED TO TAKE PRECAUTIONARY MEASURES TO PROTECT ALL EXISTING STREET IMPROVEMENTS REMAINING IN PLACE, AND ANY STREET IMPROVEMENTS OR STRUCTURES DAMAGED BY THE CONTRACTOR SHALL BE REPAIRED OR RECONSTRUCTED AT THE EXPENSE OF THE CONTRACTOR.
- THE CONTRACTOR SHALL NOT REMOVE ANY EXISTING IMPROVEMENTS, TREES, SHRUBS, WALLS, FENCES, SIGNS, STRUCTURES, PRIVATE LIGHT POLES, ETC., UNLESS DIRECTED TO DO SO BY NOTE ON THE PLANS OR BY THE ENGINEER.
- ALL REPLACEMENT, RELOCATION OR RECONSTRUCTION OF EXISTING IMPROVEMENTS, FENCES, SPRINKLER SYSTEMS, SHRUBS, WALLS, SIGNS, STEPS, SIDEWALKS, DRIVEWAYS, PRIVATE LIGHT POLES AND ALL OTHER OBJECTS PERTINENT TO THIS CONTRACT SHALL BE DONE AS DIRECTED BY THE ENGINEER.
-
- ALL BARRICADING AND TEMPORARY TRAFFIC CONTROL DEVICES OR METHODS TO BE USED DURING CONSTRUCTION SHALL BE DONE IN ACCORDANCE WITH THE 1976 ISSUE OF THE STATE OF NEVADA "TRAFFIC BARRICADE MANUAL", AVAILABLE FROM THE DIVISION OF TRAFFIC ENGINEERING, 400 E. STEWART AVE.
- THE OWNING UTILITY COMPANY SHALL BE RESPONSIBLE FOR REMOVAL OR RELOCATION OF ALL POWER POLES, TELEPHONE POLES, JOINTLY-OWNED POLES AND RELATED APPURTENANCES THAT INTERFERE WITH REQUIRED IMPROVEMENTS AS SHOWN ON THE PLANS, AND IN ACCORDANCE WITH THE "STANDARD SPECIFICATIONS".
- THE LAS VEGAS VALLEY WATER DISTRICT SHALL BE RESPONSIBLE FOR THE REMOVAL OR RELOCATION OF ALL WATER METERS THAT INTERFERE WITH REQUIRED IMPROVEMENTS AS SHOWN ON THE PLANS AND IN ACCORDANCE WITH CITY OF LAS VEGAS STANDARD DRAWING NO. 56.05, AND ADJUST WATER MANHOLES AND VALVE COVERS TO FINISHED GRADE.
- THE SOUTHWEST GAS COMPANY SHALL BE RESPONSIBLE FOR THE REMOVAL OR RELOCATION OF ALL GAS LINES AND RELATIVE APPURTENANCES THAT INTERFERE WITH REQUIRED IMPROVEMENTS AS SHOWN ON THE PLANS.
-
- THE TYPE OF CEMENT TO BE USED IN ALL CONCRETE SHALL BE THAT AS SPECIFIED IN ITEM NO. 70100.00 OF THE TECHNICAL SPECIFICATIONS AND SUBSECTION 701.03.01 OF THE STANDARD SPECIFICATIONS.

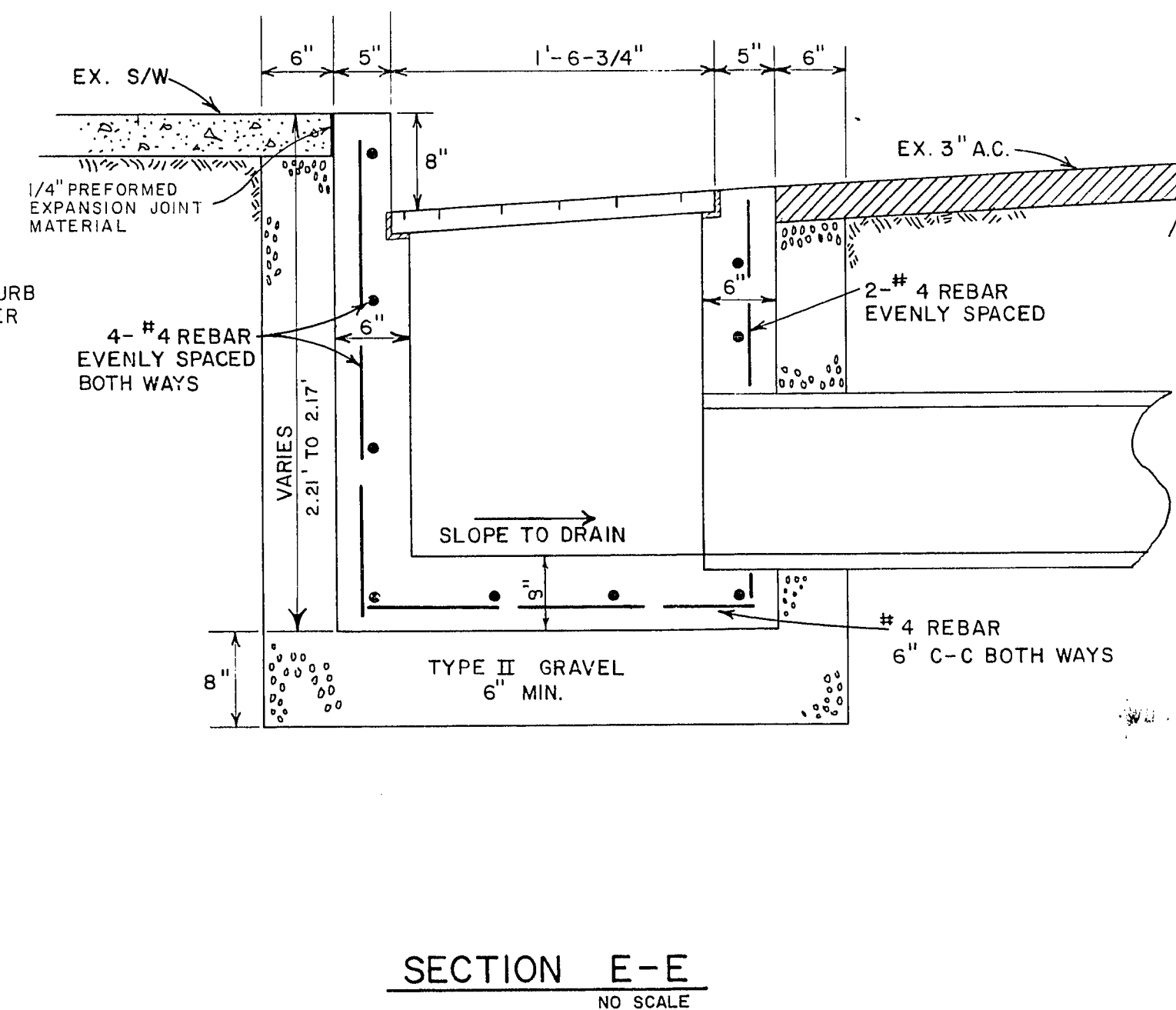
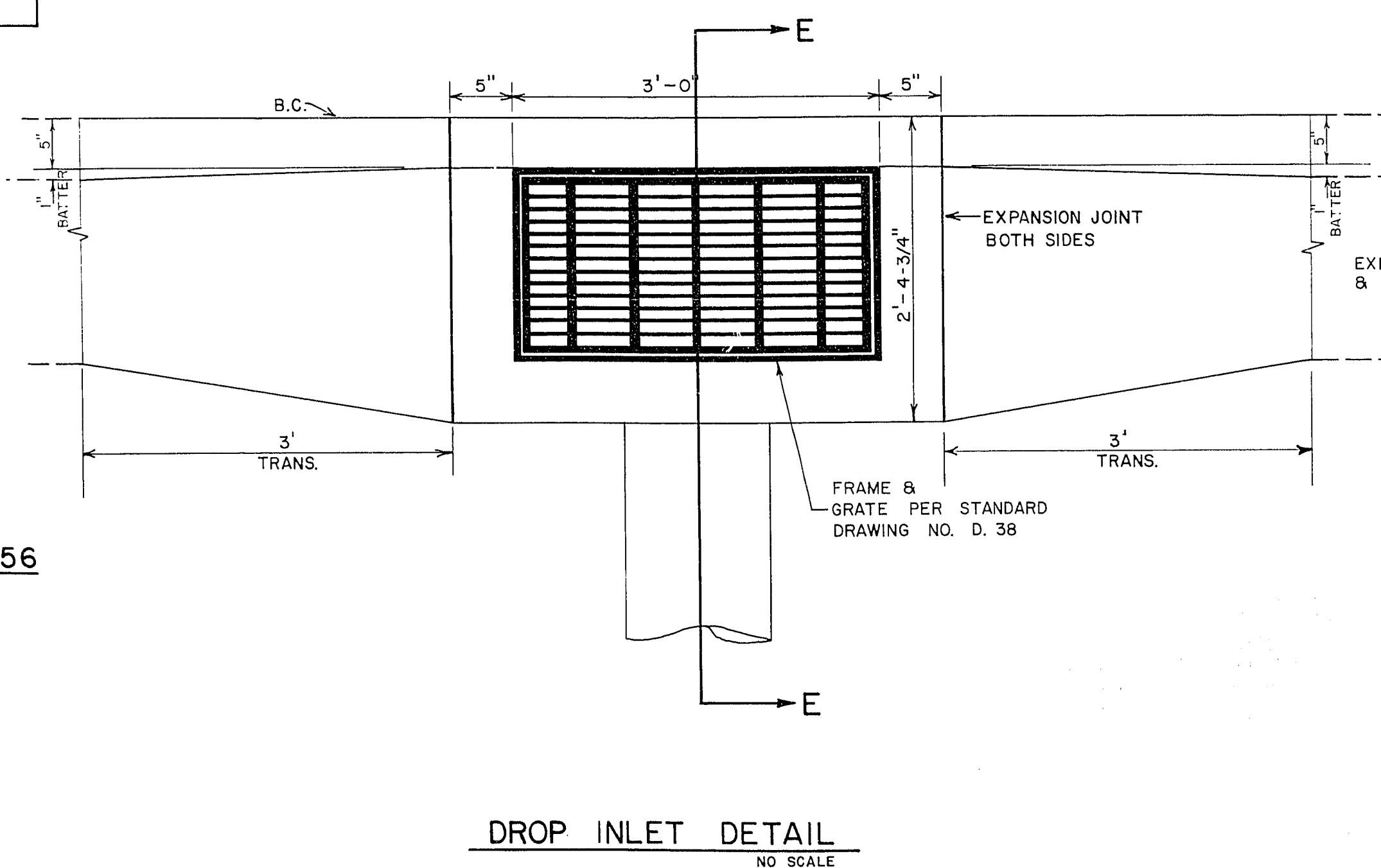


APPROXIMATE QUANTITIES

ITEM No.	DESCRIPTION	UNIT	QUANTITY
502.00.00	MINOR CONCRETE STRUCTURE	C.Y.	3
601.00.01	8" ASBESTOS CEMENT PIPE CLASS 2400	L.F.	36
601.00.02	10" A.C.P. CLASS 2400	L.F.	50
601.00.03	12" A.C.P. CLASS 2400	L.F.	421
609.01.01	STORM DRAIN DROP INLET	EA.	2
609.01.03	STORM DRAIN MANHOLE	EA.	1
401.00.00	ASPHALT REMOVAL AND TRENCH PAVEMENT REPLACEMENT	S.Y.	139
630.01.03	ADJUST SEWER LATERALS (ADDITIVE ITEM)	EA.	2
609.01.04	SPECIAL STORM DRAIN MANHOLE	EA.	1



- NOTE:
- STEEL PIPE CASING SHALL BE FABRICATED FROM A MINIMUM OF 1/4" THICK STEEL PLATES, CONFORMING TO THE REQUIREMENTS OF A.S.T.M. A283, GRADES B, C, OR D. ALL JOINTS SHALL BE WELDED. INTERIOR JOINTS SHALL BE GRIND TO A SMOOTH FINISH. ALL WELDING SHALL BE PERFORMED IN ACCORDANCE WITH A.W.W.A. C201, "A.W.W.A. STANDARD FOR FABRICATED ELECTRICALLY WELDED STEEL WATER PIPE." COATINGS FOR STEEL CASING ARE NOT REQUIRED.
 - PIPE CASING SHALL BE LAID TRUE TO LINE AND GRADE WITH NO BENDS OR CHANGES IN GRADE FOR THE FULL LENGTH OF THE CASING.
 - THE PIPE SHALL BE SUPPORTED AT EACH END OF EACH JOINT WITH SKIDS. THE ANNULAR SPACE BETWEEN THE PIPE AND THE CASING SHALL BE BACKFILLED WITH SAND. AFTER INSTALLATION OF THE PIPE, THE CASING SHALL BE SEALED AT BOTH ENDS WITH MORTARED BRICK OR CEMENT BRICK.
 - THE COST OF THIS CASING INSTALLATION TO BE INCLUDED IN THE COST OF THE 12" A.C.P. INSTALLATION.



35-5-102

CHANGE IN APPROXIMATE QUANTITIES BOX 6/1/79

Revisions

Date

W.O. no. 3323

Scale (V) AS NOTED

Date 5/25/79

Scale (H) AS NOTED

Fid. bk. no. 77-10X

Design by S. JACKSON

Approved by the Director of Public Services

Drawn by E.E. HUNT

Date 5/28/79

Engineering Design Division

GENERAL NOTES, APPROXIMATE QUANTITIES, AND DETAILS

Department of Public Services

JANSEN AVE. STORM DRAIN

FROM JANSEN AVE. TO WASHINGTON CHANNEL ON MEYER ST.

Drawing no. 327-V170

2/3

