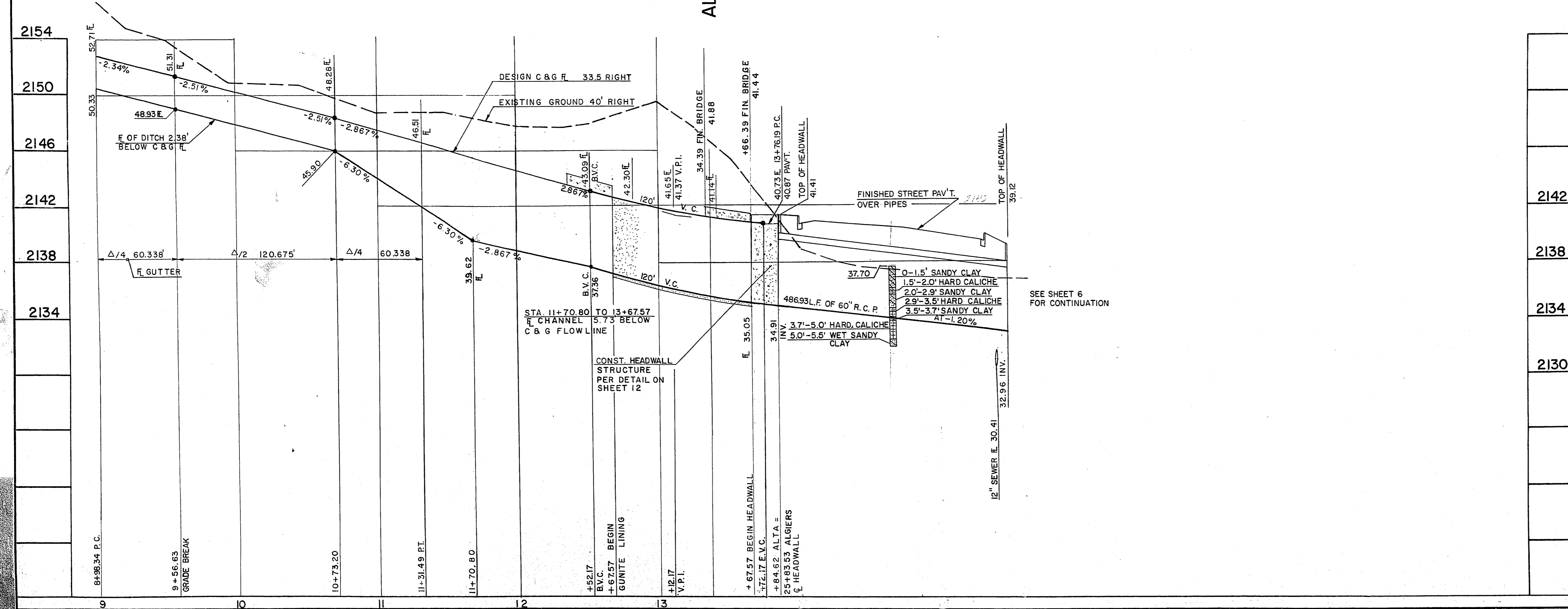


33-18

**APPROXIMATE QUANTITIES - THIS SHEET**

ITEM	DESCRIPTION	UNIT	QUANTITY
211.2	CHANNEL EXCAVATION	C.Y.	2 836
410.1	INSTALL 6' CHAIN LINK FENCE	L.F.	1613
302.1	4" TYPE I GRAVEL BASE	C.Y.	80
121.224	INSTALL 24" R.C.P.	L.F.	116
501.100	2" REINF GUNITITE LINING	S.Y.	244
	ALTERNATE ITEM		
501.100	2" REINFORCED GUNITITE LINING	S.Y.	962



**CONTRACT DRAWING**  
OCT 21 1968

APPROVED  
DATE  
BY  
DATE  
BY  
DATE  
BY  
DATE  
BY  
DATE

KSL 10/21/68  
KSL 10-16  
JLB 10-21-68  
JLB 10-16-68  
JLB 10-15-68  
JLB 10-16-68

**CURVE DATA**

NO.	DELTA	RADIUS	TANGENT	LENGTH	LOCATION
13	13° 49' 43"	1000'	121.27'	241.35'	B.C.R
14	13° 49' 43"	1006'	121.99'	242.80'	R/W

**REVISIONS**

REVISION NO.	DESCRIPTION	BY	DATE	APPROVAL

**CITY OF LAS VEGAS NEVADA**  
DEPARTMENT OF PUBLIC WORKS  
SERVICES DIVISION

**LAS VEGAS CREEK CHANNEL (A-1)**  
ALTA DR. - ALGIERS RD. TRIBUTARY CHANNELS (D-1 & D-2)

W.O. NO. 728	F.B.K. NO. 66-7X	DATE	DRAWING NO.
SC. (H) 1" = 40'	SC. (V) 1" = 4'		<b>327 - 115</b>
DES. LOUVIERE			FILE NO. HUD Project No.
DR. LANGE			WS-6-29-0013
APPROVED BY DIRECTOR OF PUBLIC WORKS			SHEET 3 OF 21

APPROVED BY: *[Signature]* DATE: 10/21/68