

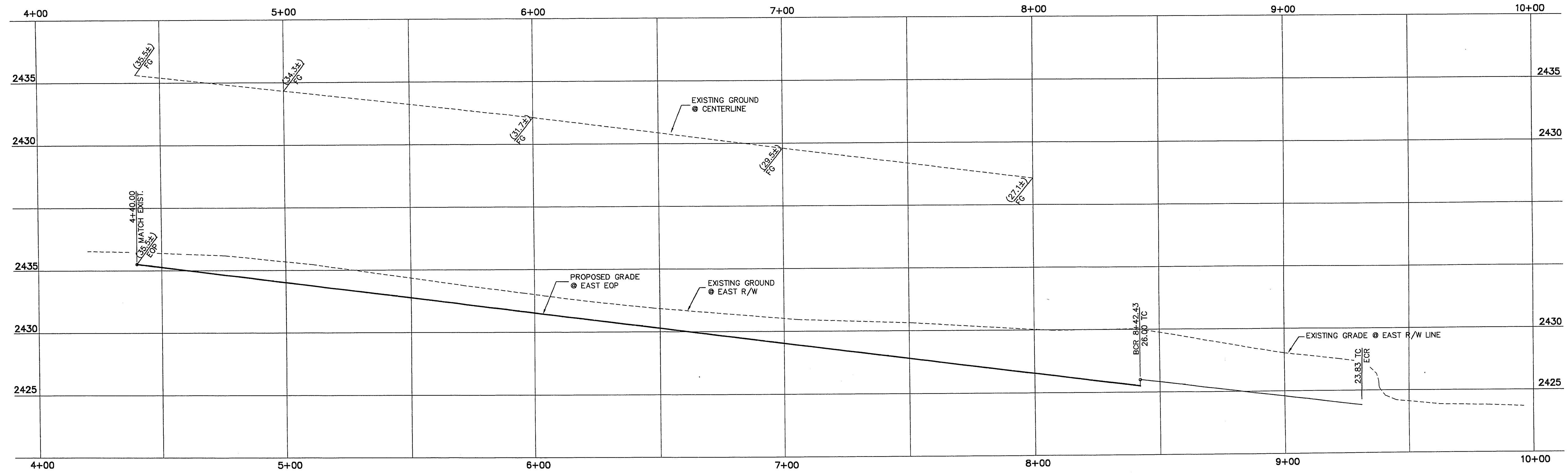
CURVE DATA:

CURVE	DELTA	RADIUS	LENGTH	TANGENT
50	180°00'00"	1.00'	3.14'	---

NOTE: MEDIAN CURBS ARE TO FACE OF CURB. ALL OTHER CURVES ARE BACK OF CURB.

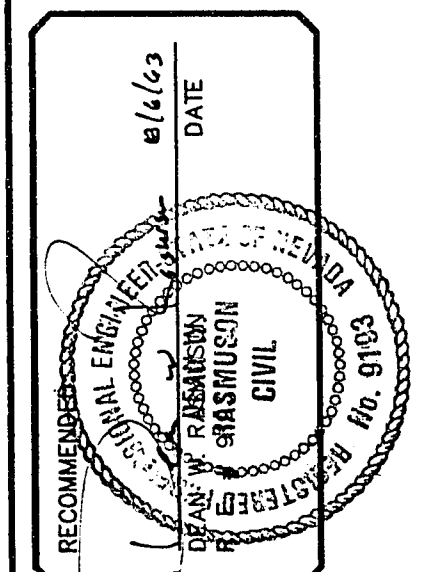
CAUTION!
10" HIGH PRESSURE GAS LINE

- CONSTRUCTION NOTES
- (A) SAWCUT EXISTING EDGE OF PAVEMENT NEAT
 - (M) REMOVE AND RELOCATE EXIST. GAS LINE BY OTHERS
 - (3) CONSTRUCT TYPE "A" TACK-ON ISLAND CURB PER STD. DWG 220
 - (12) ADJUST EXISTING MANHOLE TO GRADE
 - (13) ADJUST EXISTING VALVE BOX TO GRADE



SCALE: HORIZ. 1" = 20'
VERT. 1" = 4'

NO.	DESCRIPTION	DATE	APP'D



DATE: 08/01/93
DRAWN BY: MSC
DESIGNED BY: DWS
CHECKED BY: JRS
JOB NO.: 0103.03.030
SCALE: 1" = 20'

PENTACORE
Engineering, Inc.
6763 West Charleston Boulevard
Las Vegas, Nevada 89102
(702) 258-0115

CITY OF LAS VEGAS
LAKE MEAD BOULEVARD SID 1414
BUFFALO DRIVE (SOUTH)
4+55 TO 9+50

SHEET 11 OF 26
107-V2096

LM-11 Tue Aug 24 23:57:25 1993 Plotted by M.G.G.

DISK #

9-2-97