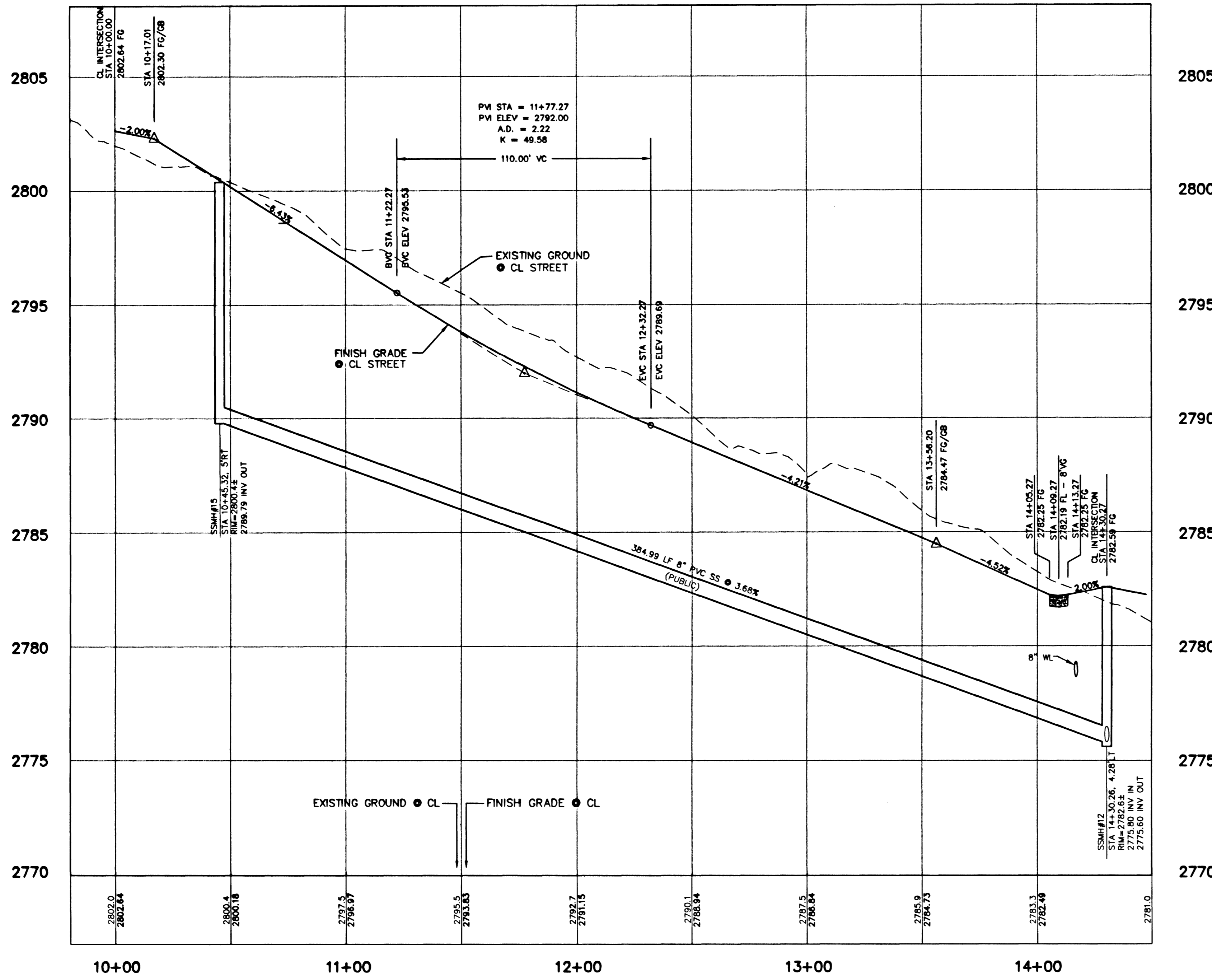
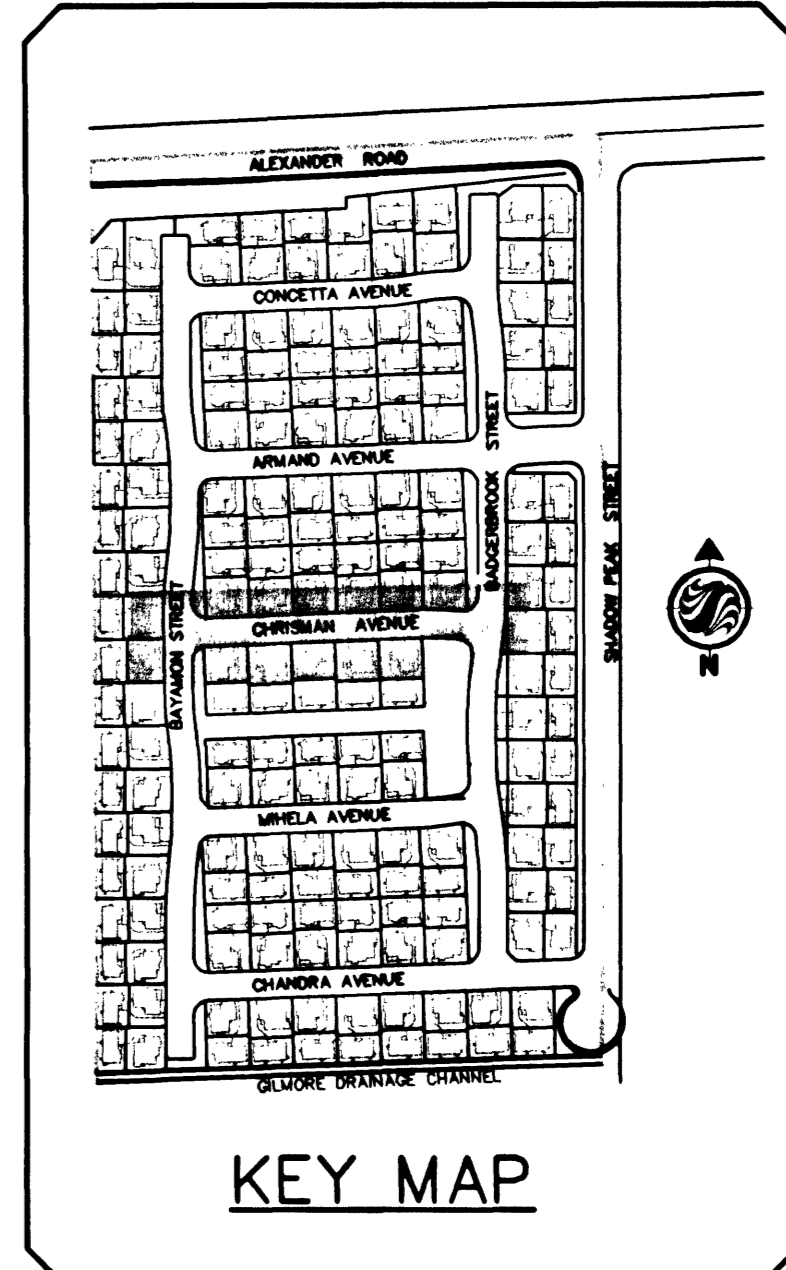
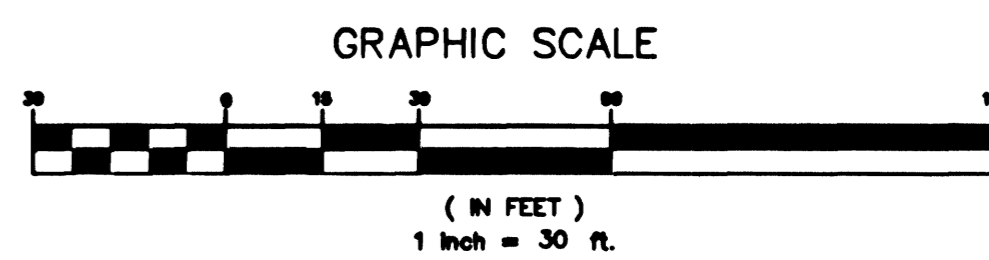


CHRISMAN AVENUE - PLAN (PRIVATE ST.)
 (PUE, CLV PUBLIC SEWER EASEMENT & PUBLIC DRAINAGE EASEMENT TO BE MAINTAINED BY DEVELOPER HOA)



CHRISMAN AVENUE - PROFILE (PRIVATE ST.)
 (PUE, CLV PUBLIC SEWER EASEMENT & PUBLIC DRAINAGE EASEMENT TO BE MAINTAINED BY DEVELOPER HOA)
 SCALE: HORIZ. 1" = 30'
 VERT. 1" = 3'



Curve Table

No.	Radius	Delta	Length	Tangent
C1	20.00	83°09'01"	30.77	19.36
C2	20.00	93°17'43"	32.06	21.16
C3	20.00	93°37'16"	32.68	21.31
C4	20.00	93°59'21"	32.81	21.44
C5	400.00	08°23'17"	58.56	29.33
C6	380.50	07°32'40"	50.10	25.09
C7	419.50	07°27'50"	54.65	27.36

PRIVATE STREET NOTE:
 ALL PRIVATE STREETS ARE PUBLIC DRAINAGE EASEMENTS, CITY OF LAS VEGAS (CLV) SEWER EASEMENTS, & PUBLIC UTILITY EASEMENTS (PUE) TO BE PRIVATELY MAINTAINED BY HOME OWNERS ASSOCIATION (HOA).

BENCHMARK
 CITY OF LAS VEGAS BENCHMARK BLVD# 11008
 RIVET AND 2-INCH DIAMETER ALUMINUM PLATE IN 8-INCH DIAMETER CONCRETE CYLINDER AT THE NORTHWEST CORNER OF HUALAPAI AND RED COACH.
 ELEVATION = 622.0732 METERS, 2097.09 FEET (NAVD'88)

BASIS OF BEARING
 NORTH 01°09'30" WEST, BEING THE BEARING OF THE WEST LINE OF THE NORTHWEST QUARTER (NW 1/4) OF THE NORTHWEST QUARTER (NW 1/4) OF SECTION 12, TOWNSHIP 20 SOUTH, RANGE 59 EAST, M.D.M., CLARK COUNTY, NEVADA AS SHOWN ON THAT CERTAIN MAP ON FILE IN THE CLARK COUNTY RECORDER'S OFFICE IN FILE 88, PAGE 08 OF SURVEYS.

Avoid hitting overhead power lines. It's costly.
Call before you dig.
 1-702-593-6111

Avoid cutting underground utility lines. It's costly.
Call before you dig.
 1-800-227-2600

DATE: 10/14/2002
 PM: S.A.
 DRAWN BY:
 DESIGNED BY:
 CHECKED BY:
 ADA CHECKED:
 JOB NO.: 88170002
 SCALE: 1" = 30'

NO. DESCRIPTION DATE APPD

Copyright Reserved
 The Contractor shall verify and be responsible for all dimensions. The user shall not be responsible for any errors or omissions. Reproduction or use for any purpose other than that authorized by Statitec is prohibited.

Statitec Consulting Inc.
 7231 W. Charleston Blvd.
 Las Vegas NV U.S.A.
 89111
 Tel: 702.258.0115
 Fax: 702.258.4956
 www.statitec.com

Statitec

RICHMOND AMERICAN HOMES
 Richmond American Homes
 of Nevada, Inc.
 7230 West Peak Drive, Suite 212
 Las Vegas, NV 89128
 (702) 240-5600

RICHMOND AMERICAN HOMES OF NEVADA, INC
 LONE MOUNTAIN TERRACES
 CHRISMAN AVENUE
 STA 10+00 TO STA 14+50
 PLAN AND PROFILE

PROFESSIONAL ENGINEER
 JAMES W. LELAND
 10/14/02
 No. 4832

SHEET **13** OF 47
 C.L.V. DWG.#
 3074-4730

J:\Active\88170002\Drawings\Imp\plan\13_Pe-003.dwg, d:\lhw\14 Oct 2002 - 10:11am
 46112