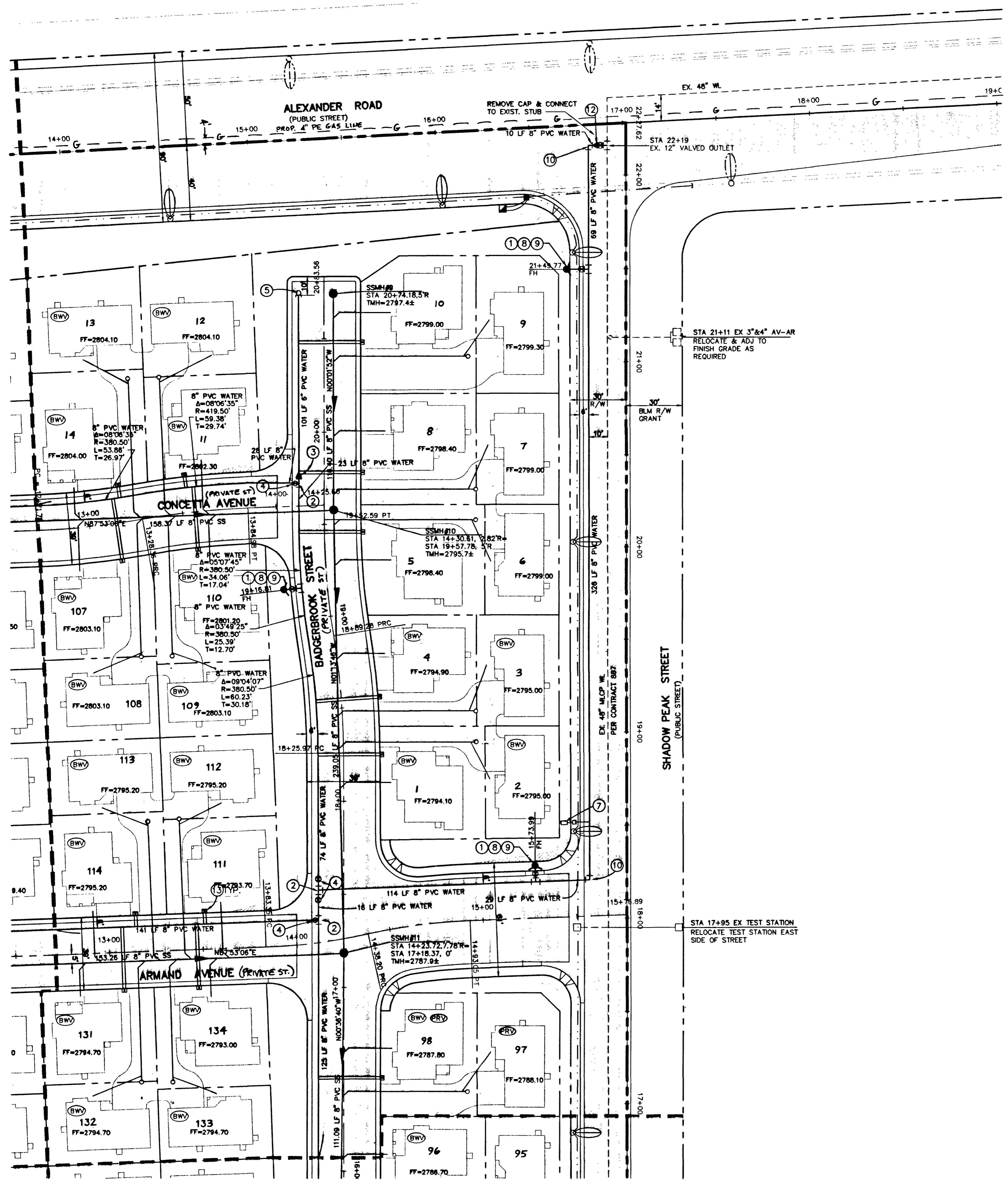


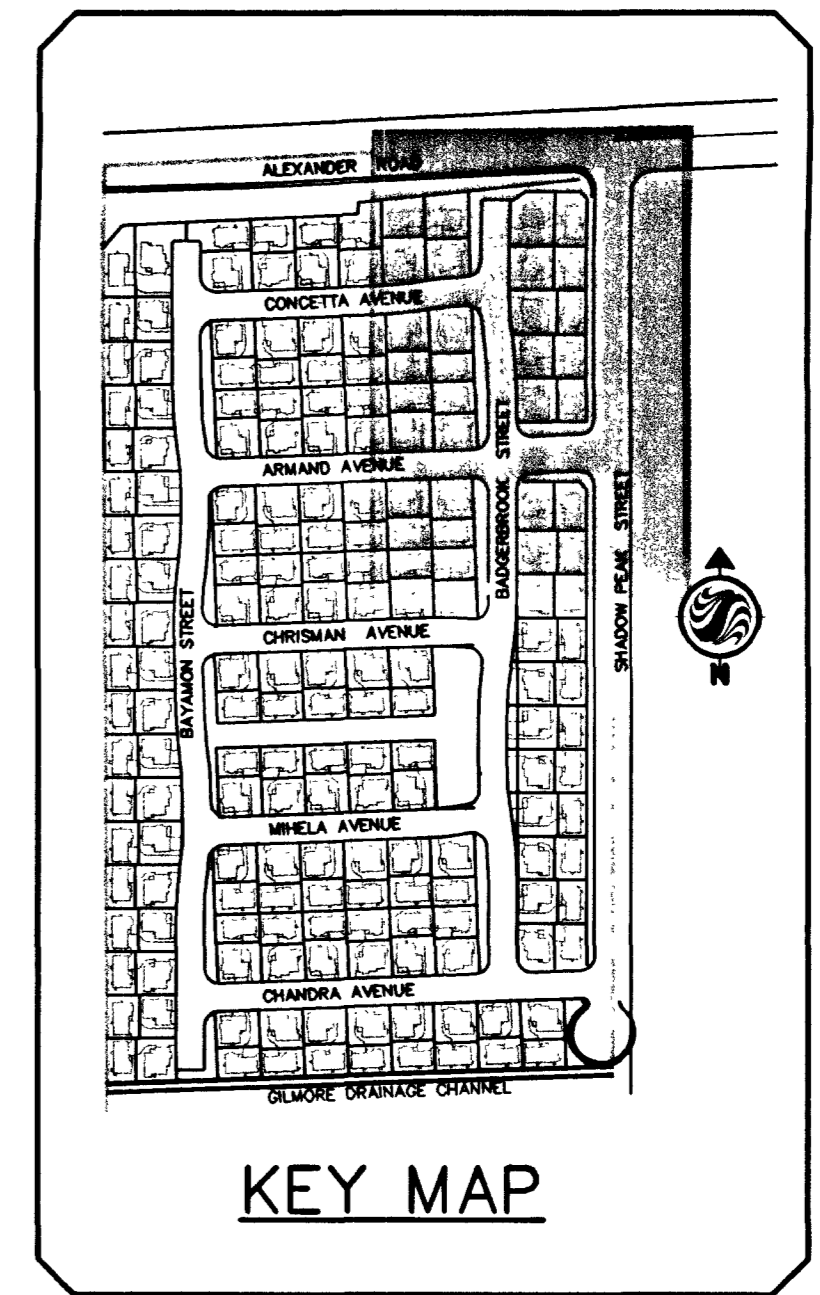
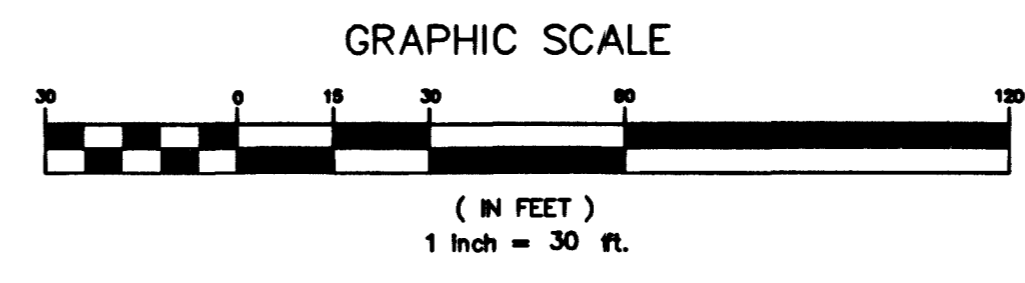
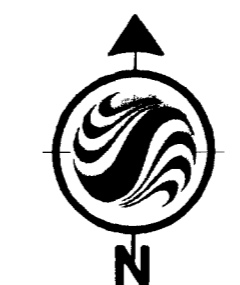
M:\Active\88170002\Drawings\Imp\plans\28_0070-u102.dwg dmlhhead Wed, 09 Oct 2002 - 12:17pm

MATCHLINE - SEE SHEET 27



MATCHLINE - SEE SHEET 30

46127 48870 49702



UTILITY LEGEND

- EX. 8" W
- 8" W
- PROPOSED WATER LINE
- PROPOSED 5/8" METER (UNLESS NOTED OTHERWISE)
- PROPOSED FIRE HYDRANT W/6" LATERAL & 6" G.V.
- EXISTING SEWER LINE
- PROPOSED SEWER LINE
- PROPOSED 4" SEWER LATERAL
- EXISTING SEWER MANHOLE
- PROPOSED SEWER MANHOLE
- GATE VALVE
- CONCRETE DRIVEWAY
- REDUCER
- LOT REQUIRES RESIDENTIAL SEWER BACKWATER VALVE
- PRESSURE REDUCING VALVE

FITTINGS LEGEND (THIS SHEET ONLY)

1	F.H. ASSEMBLY PER UDACS PLATE 7	3 EA.
2	8" TEE	3 EA.
3	8"x 6" REDUCER	1 EA.
4	8" GATE VALVE	4 EA.
5	2" BLOW OFF VALVE PER UDACS PLATE 4	1 EA.
6	8" CAP	1 EA.
7	1" METER W/1" RPPA PER UDACS PLATE ND-IP 11A	1 EA.
8	6" GATE VALVE	3 EA.
9	8"x 6" TEE	3 EA.
10	8" 90° BEND	2 EA.
11	8" KOPPL TAP	
12	12"x8" REDUCER	1 EA.
13	(2) 5/8" METERS PER UDACS PLATE 1-B IN AMORCAST A-6000460 DUAL METER BOX & A-6000461 LID	28 EA.

NOTE:
H.O.A. RESPONSIBLE FOR ALL WATER SERVICE LATERALS PAST METER.

PRIVATE STREET NOTE
NOTE: ALL PRIVATE STREETS ARE PUBLIC DRAINAGE EASEMENTS, C/LY SEWER AND PUE EASEMENTS TO BE PRIVATELY MAINTAINED BY THE HOME OWNERS ASSOCIATION.

ENGINEER'S NOTE
WATER & SEWER ARE PUBLIC UTILITIES. THE INTERIOR STREETS ARE PRIVATE, BUT DESIGNATED AS PUBLIC UTILITY EASEMENTS.

NOTE
APPROVAL FOR THE FIRE DEPARTMENT HAVING JURISDICTION IS REQUIRED PRIOR TO OBTAINING FINAL APPROVAL FROM THE LAS VEGAS VALLEY WATER DISTRICT.

APPROVED FOR CONSTRUCTION
LAS VEGAS VALLEY WATER DISTRICT DATE

FOR ESTIMATED WATER QUANTITIES SEE SHEET 32

Avoid cutting underground utility lines. It's costly.
Call before you Dig.
1-800-227-2600

Avoid hitting overhead power lines. It's costly.
Call before you do Overhead.
1-702-593-6111

APPROVALS

CITY FIRE MARSHAL *[Signature]* 10/9/02 DATE

LAS VEGAS VALLEY WATER DISTRICT *[Signature]* 10/24/02 DATE

REVISION LOG

NO.	DESCRIPTION	DATE
1	ISSUED FOR PERMITS	10/18/02
2	REVISED PER COMMENTS	10/21/02
3	REVISED PER COMMENTS	10/21/02
4	REVISED PER COMMENTS	10/21/02
5	REVISED PER COMMENTS	10/21/02
6	REVISED PER COMMENTS	10/21/02
7	REVISED PER COMMENTS	10/21/02
8	REVISED PER COMMENTS	10/21/02
9	REVISED PER COMMENTS	10/21/02
10	REVISED PER COMMENTS	10/21/02
11	REVISED PER COMMENTS	10/21/02
12	REVISED PER COMMENTS	10/21/02
13	REVISED PER COMMENTS	10/21/02
14	REVISED PER COMMENTS	10/21/02
15	REVISED PER COMMENTS	10/21/02
16	REVISED PER COMMENTS	10/21/02
17	REVISED PER COMMENTS	10/21/02
18	REVISED PER COMMENTS	10/21/02
19	REVISED PER COMMENTS	10/21/02
20	REVISED PER COMMENTS	10/21/02
21	REVISED PER COMMENTS	10/21/02
22	REVISED PER COMMENTS	10/21/02
23	REVISED PER COMMENTS	10/21/02
24	REVISED PER COMMENTS	10/21/02
25	REVISED PER COMMENTS	10/21/02
26	REVISED PER COMMENTS	10/21/02
27	REVISED PER COMMENTS	10/21/02
28	REVISED PER COMMENTS	10/21/02
29	REVISED PER COMMENTS	10/21/02
30	REVISED PER COMMENTS	10/21/02

DATE: 10/19/2002
 DRAWN BY: S.A.
 DESIGNED BY:
 CHECKED BY:
 AOA CHECKED BY:
 JOB NO.: 88170002
 SCALE: 1" = 30'

Stantec Consulting Inc.
 7251 W. Charleston Blvd.
 Las Vegas NV U.S.A.
 89117
 Tel. 702.258.0115
 Fax. 702.258.4956
 www.stantec.com

RICHMOND AMERICAN HOMES
 Richmond American Homes
 of Nevada, Inc.
 7225 West Sahara Drive, Suite 212
 Las Vegas, NV 89128
 (702) 240-5600

RICHMOND AMERICAN HOMES OF NEVADA, INC
 LONE MOUNTAIN TERRACES
 UTILITY PLAN 2

PROFESSIONAL ENGINEER
 VALUE W. LEBLANC
 License No. 48270

SHEET **28** OF 47
 307Y-4730