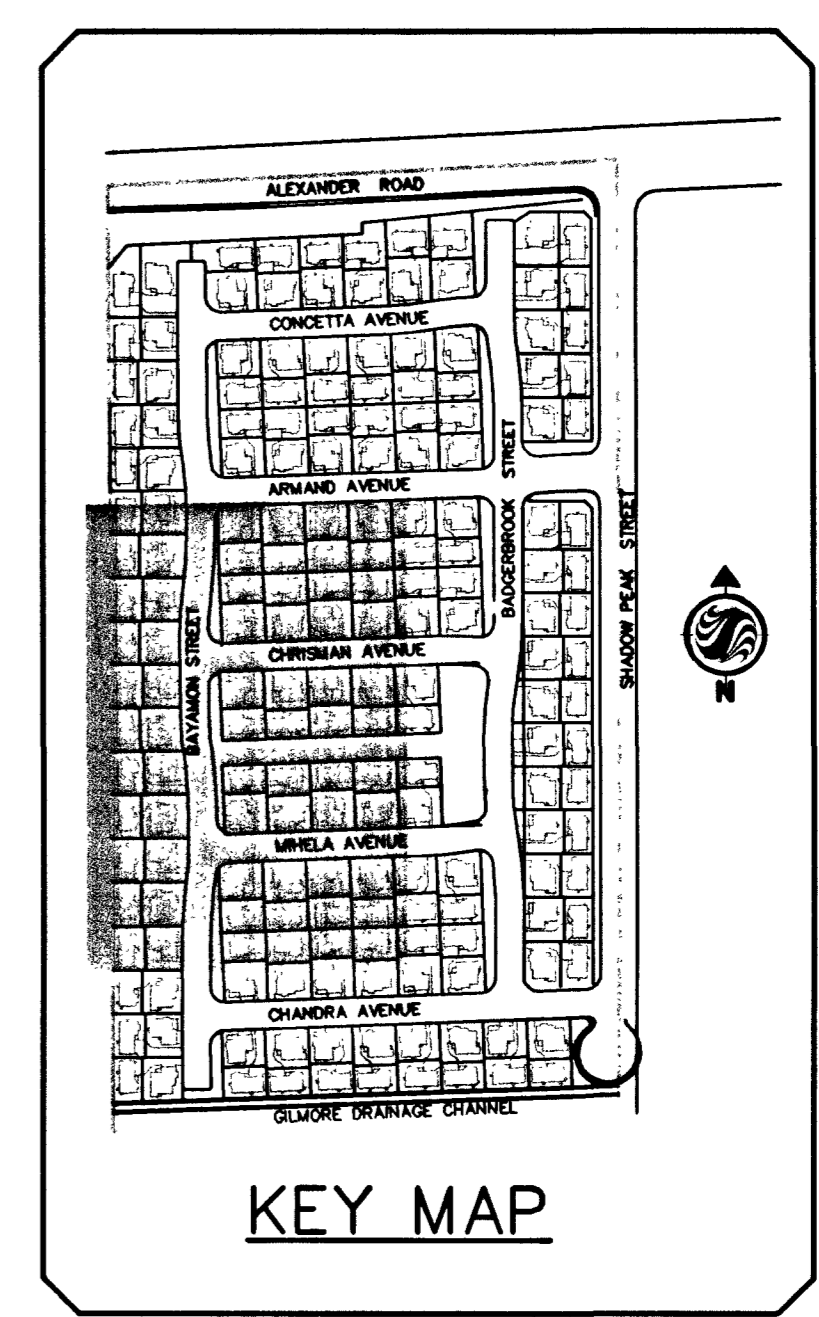
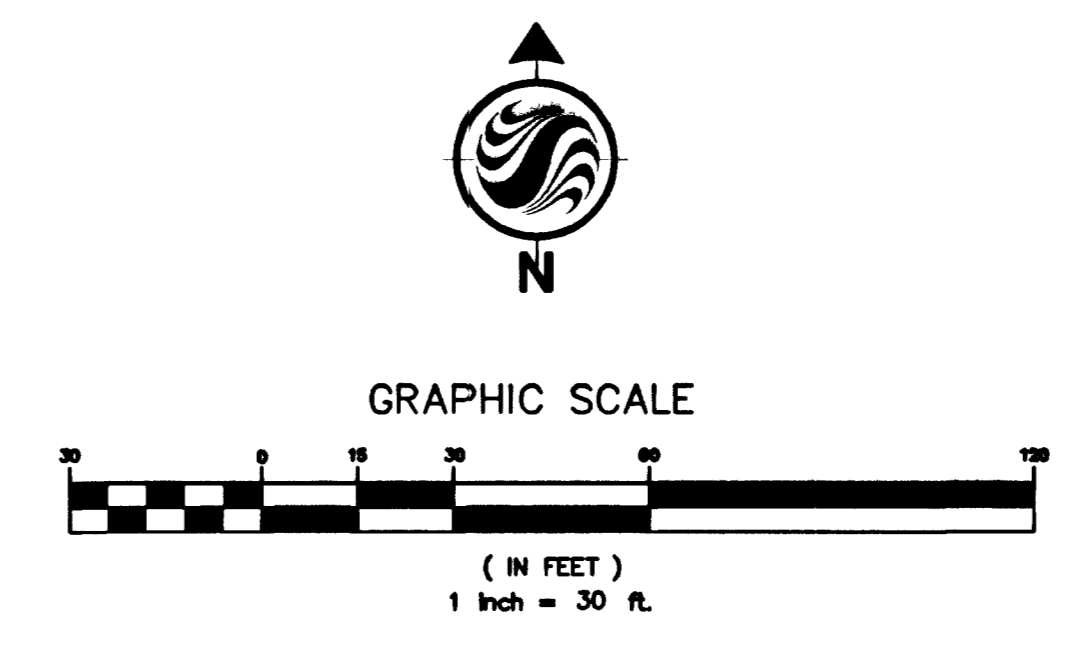
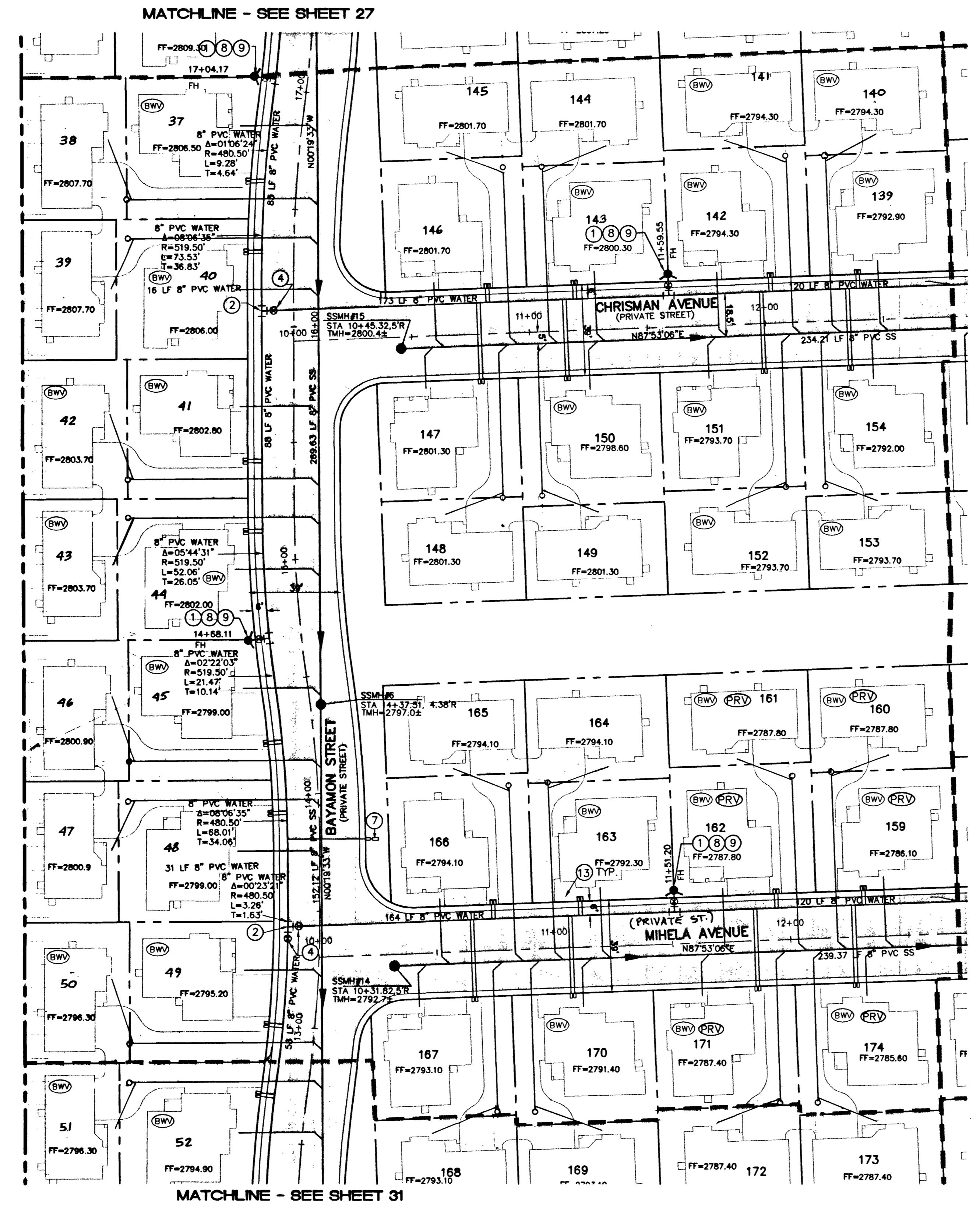


W:\Active\88170002\Drawings\Imp\02\070-u03.dwg, dmlsheethead Men, 07 Oct, 2002 - 8:26am

46128 48871 49703

FUTURE I-215 BELTWAY



UTILITY LEGEND

- - - EX. B.W. EXISTING WATER LINE
- - - 8" W PROPOSED WATER LINE (UNLESS NOTED OTHERWISE)
- - - PROPOSED FIRE HYDRANT W/6" LATERAL & 6" G.V.
- - - EXISTING SEWER LINE
- - - PROPOSED SEWER LINE
- - - PROPOSED 4" SEWER LATERAL
- - - EXISTING SEWER MANHOLE
- - - PROPOSED SEWER MANHOLE
- - - GATE VALVE
- - - CONCRETE DRIVEWAY
- - - REDUCER
- (BW) LOT REQUIRES RESIDENTIAL SEWER BACKWATER VALVE
- (PRV) PRESSURE REDUCING VALVE

FITTINGS LEGEND (THIS SHEET ONLY)

1	F.H. ASSEMBLY PER UDACS PLATE 7	3 EA.
2	8" TEE	2 EA.
3	8"x 6" REDUCER	
4	8" GATE VALVE	3 EA.
5	2" BLOW OFF VALVE PER UDACS PLATE 4	
6	8" CAP	
7	1" METER W/1" RPPA PER UDACS PLATES NO. 1D & 1A	1 EA.
8	6" GATE VALVE	3 EA.
9	8"x 6" TEE	3 EA.
10	8" 90° BEND	
11	8" KOPPL TAP	
12	12"x8" REDUCER	
13	(2) 5/8" METERS PER UDACS PLATE 1-B IN AMORCAST A-6000460 DUAL METER BOX & A-6000461 LID	46 EA.

NOTE:
H.O.A. RESPONSIBLE FOR ALL WATER SERVICE LATERALS PAST METER.

PRIVATE STREET NOTE
NOTE: ALL PRIVATE STREETS ARE PUBLIC DRAINAGE EASEMENTS, CLV SEWER AND PUE EASEMENTS TO BE PRIVATELY MAINTAINED BY THE HOME OWNERS ASSOCIATION.

ENGINEER'S NOTE
WATER & SEWER ARE PUBLIC UTILITIES. THE INTERIOR STREETS ARE PRIVATE, BUT DESIGNATED AS PUBLIC UTILITY EASEMENTS.

NOTE
APPROVAL FOR THE FIRE DEPARTMENT HAVING JURISDICTION IS REQUIRED PRIOR TO OBTAINING FINAL APPROVAL FROM THE LAS VEGAS VALLEY WATER DISTRICT.

FOR ESTIMATED WATER QUANTITIES SEE SHEET 32

APPROVED FOR CONSTRUCTION
LAS VEGAS VALLEY WATER DISTRICT DATE

NOTE (PRV)
THIS PROPERTY MAY HAVE STATIC WATER PRESSURE IN EXCESS OF 80 PSI. THE UNIFORM PLUMBING CODE REQUIRES THAT INDIVIDUAL ON-SITE (PRIVATE), PRESSURE REDUCING VALVES BE INSTALLED WHENEVER THE PRESSURE EXCEEDS 80 PSI. PRVS ARE THE DEVELOPER'S RESPONSIBILITY AND WILL NOT BE INSPECTED OR INCLUDED IN THE ACCEPTANCE OF LVWD FACILITIES.
LOTS WITHIN 2875 PRESSURE ZONE WITH A FINISH FLOOR ELEVATION LESS THAN 2790.5 WILL REQUIRE PRV.
LOTS 57-98, 135-138, 155-162, 171-190
TOTAL = 74

Avoid cutting underground utility lines. It's costly.
Call before you Dig.
1-800-227-2600

Avoid hitting overhead power lines. It's costly.
Call before you do Overhead.
1-702-593-6111

APPROVALS
CITY FIRE MARSHAL: [Signature] 10/8/02 DATE
LAS VEGAS VALLEY WATER DISTRICT: [Signature] 10/24/02 DATE

DATE: 10/7/2002	S.A.
DESIGNED BY:	
CHECKED BY:	
ADA CHECKED:	
JOB NO.: 88170002	SCALE: 1"=30'
REVISION NUMBERING: 02510903	DATE: 10/8/02
Copyright Reserved	

Stantec Consulting Inc.
7251 W. Charleston Blvd.
Las Vegas NV U.S.A.
98117 Tel: 702.258.0115
7230 West Peak Drive, Suite 212
Las Vegas, NV 89128
(702) 240-5600
www.stantec.com

RICHMOND AMERICAN HOMES
Richmond American Homes of Nevada, Inc.
7230 West Peak Drive, Suite 212
Las Vegas, NV 89128
(702) 240-5600

RICHMOND AMERICAN HOMES OF NEVADA, INC
LONE MOUNTAIN TERRACES
UTILITY PLAN 3

SHEET **29** OF 47
301Y-4730