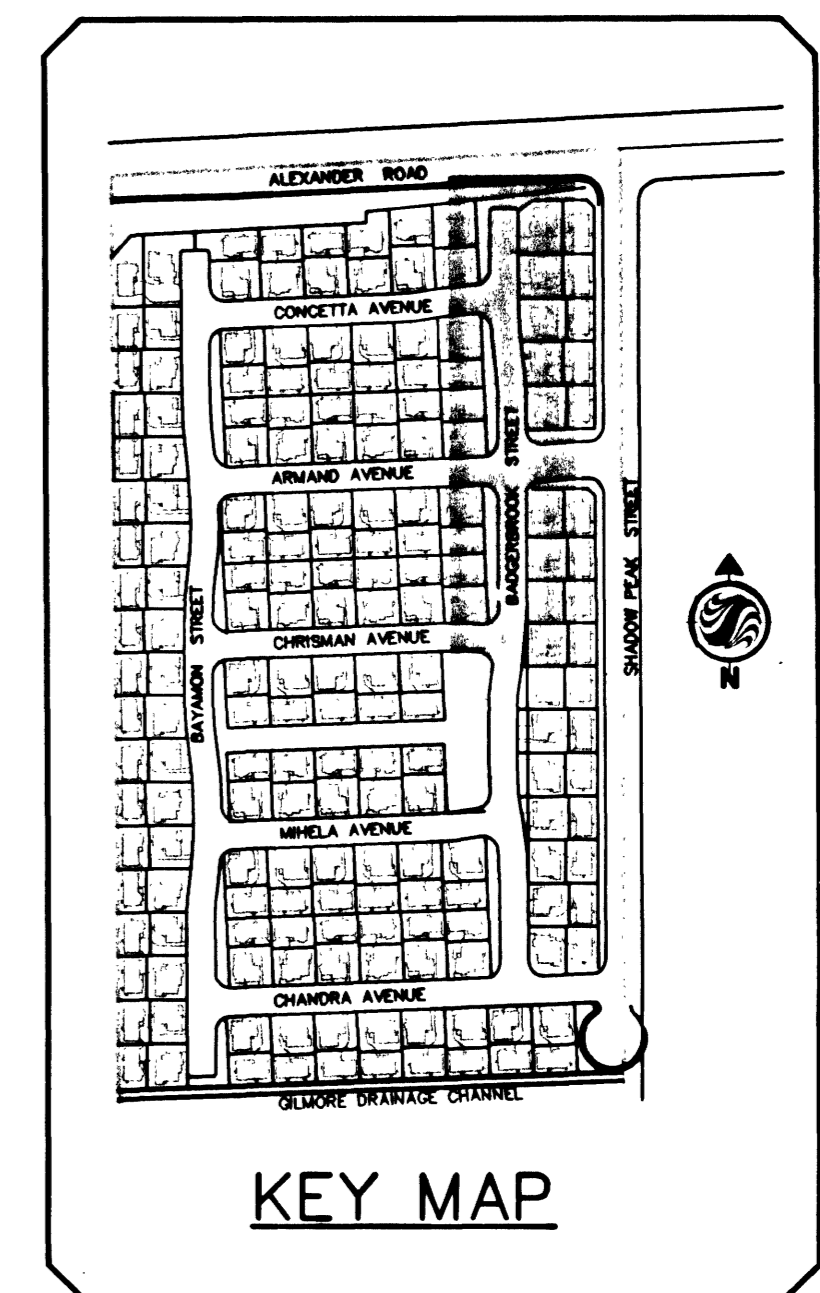
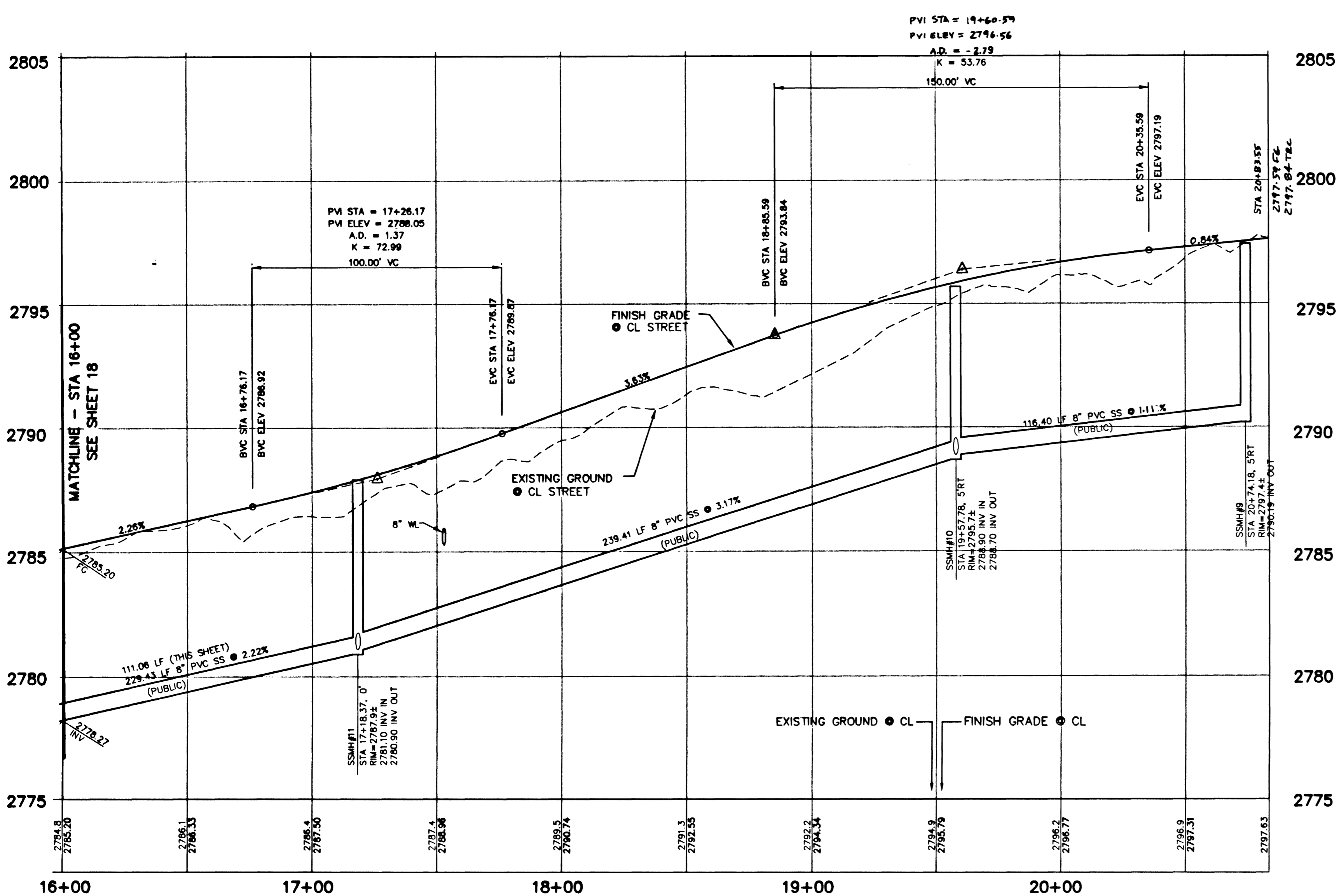


BADGERBROOK STREET - PLAN (PRIVATE ST.)

(PUE, CLV PUBLIC SEWER EASEMENT & PUBLIC DRAINAGE EASEMENT TO BE MAINTAINED BY DEVELOPER HOA)



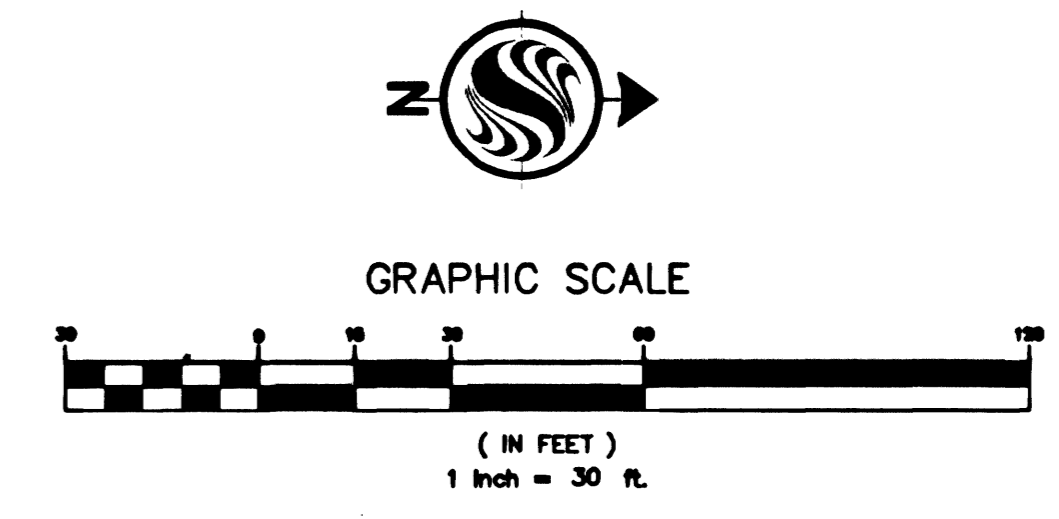
DATE:	10/14/2002
SCALE:	1" = 30'
NO. DESCRIPTION:	
DATE:	
APP'D:	
NO. DESCRIPTION:	
DATE:	
APP'D:	
NO. DESCRIPTION:	
DATE:	
APP'D:	



BADGERBROOK STREET - PROFILE (PRIVATE STREET)

(PUE, CLV PUBLIC SEWER EASEMENT & PUBLIC DRAINAGE EASEMENT TO BE MAINTAINED BY DEVELOPER HOA)

SCALE: HORIZ. 1" = 30'
VERT. 1" = 3'



No.	Radius	Delta	Length	Tangent
C1	20.00'	81°16'14"	28.37'	17.16'
C2	20.00'	92°05'03"	32.14'	20.74'
C3	20.00'	87°54'57"	30.69'	19.29'
C4	20.00'	96°25'07"	33.66'	22.38'
C5	3.00'	90°00'00"	4.71'	3.00'
C6	20.00'	87°47'21"	30.64'	19.24'
C7	419.50'	04°46'28"	34.95'	17.43'
C8	380.50'	09°04'07"	60.23'	30.18'
C9	419.50'	09°04'07"	66.40'	33.27'
C10	400.00'	09°04'07"	63.31'	31.72'

PRIVATE STREET NOTE
NOTE: ALL PRIVATE STREETS ARE PUBLIC DRAINAGE EASEMENTS, CLV SEWER AND PUE EASEMENTS TO BE PRIVATELY MAINTAINED BY THE HOME OWNERS ASSOCIATION.

BENCHMARK
CITY OF LAS VEGAS BENCHMARK BLV09 1NEE6
RIVET AND 2-INCH DIAMETER ALUMINUM PLATE IN 6-INCH DIAMETER CONCRETE CYLINDER AT THE NORTHWEST CORNER OF HUJALPAI AND RED COACH.
ELEVATION = 822.0732 METERS, 2697.09 FEET (NAVD'88)

BASIS OF BEARING
NORTH 01°09'30" WEST, BEING THE BEARING OF THE WEST LINE OF THE NORTHWEST QUARTER (NW 1/4) OF THE NORTHWEST QUARTER (NW 1/4) OF SECTION 12, TOWNSHIP 20 SOUTH, RANGE 59 EAST, M.D.M., CLARK COUNTY, NEVADA AS SHOWN ON THAT CERTAIN MAP ON FILE IN THE CLARK COUNTY RECORDER'S OFFICE IN FILE 88, PAGE 08 OF SURVEYS.

Call before you do Overhead
1-702-593-6111

Call before you Dig.
1-800-227-2600

Stantec Consulting Inc.
7251 W. Charleston Blvd.
Las Vegas, NV U.S.A. 89117
Tel. 702.258.0115
Fax. 702.258.4956
www.stantec.com

RICHMOND AMERICAN HOMES
Richmond American Homes of Nevada, Inc.
7230 West Peak Drive, Suite 212
Las Vegas, NV 89128
(702) 240-5600

RICHMOND AMERICAN HOMES OF NEVADA, INC
LONE MOUNTAIN TERRACES
BADGERBROOK STREET
STA 16+00 TO STA 20+83.55
PLAN AND PROFILE

PROFESSIONAL ENGINEER STATE OF NEVADA
JAMES W. LEMOND
10510 S. MOHAWK DRIVE
SUITE 100
LAS VEGAS, NV 89138

J:\Active\88170002\Drawings\Impress\19_Pp_006.dwg, 14 Oct 2002 - 11:28am

46118