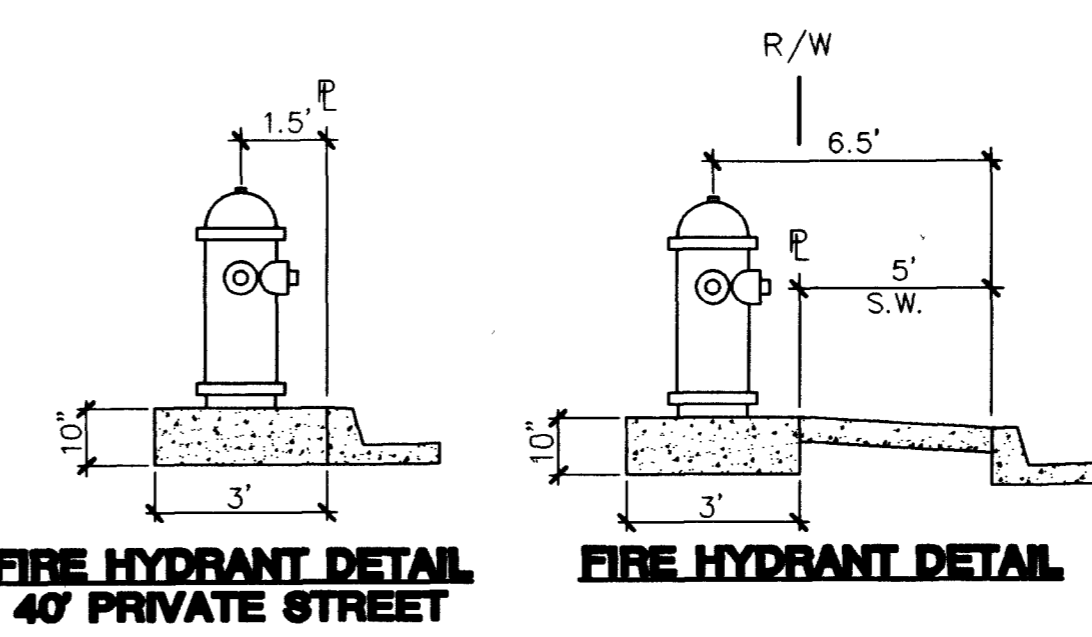
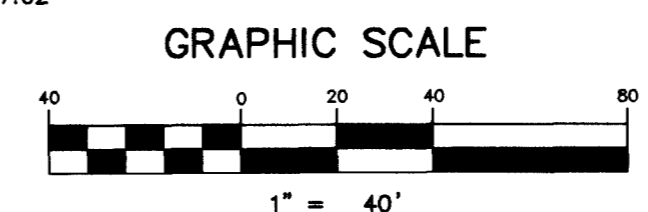
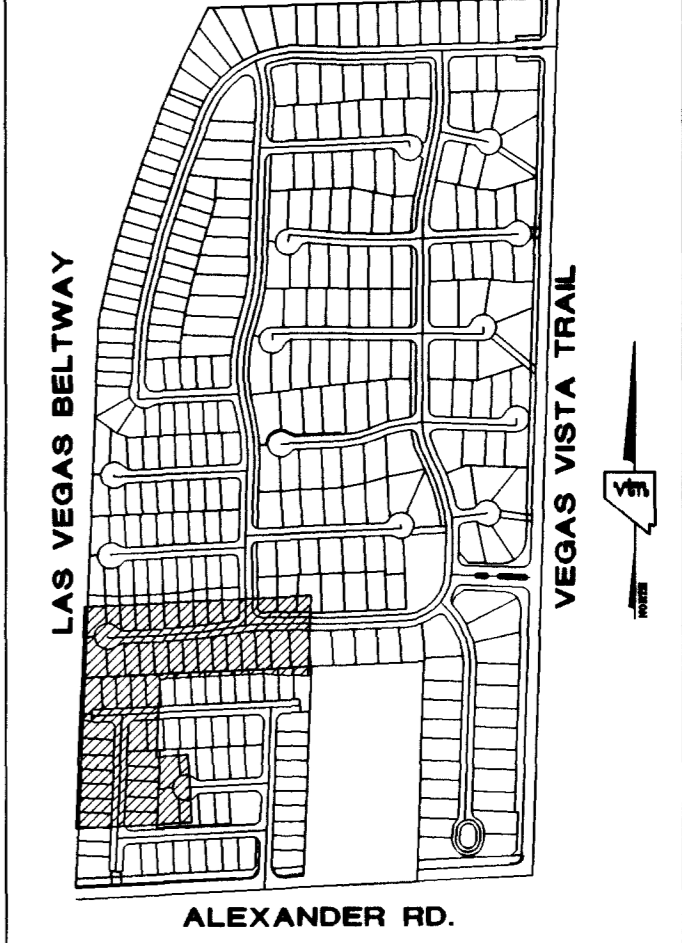
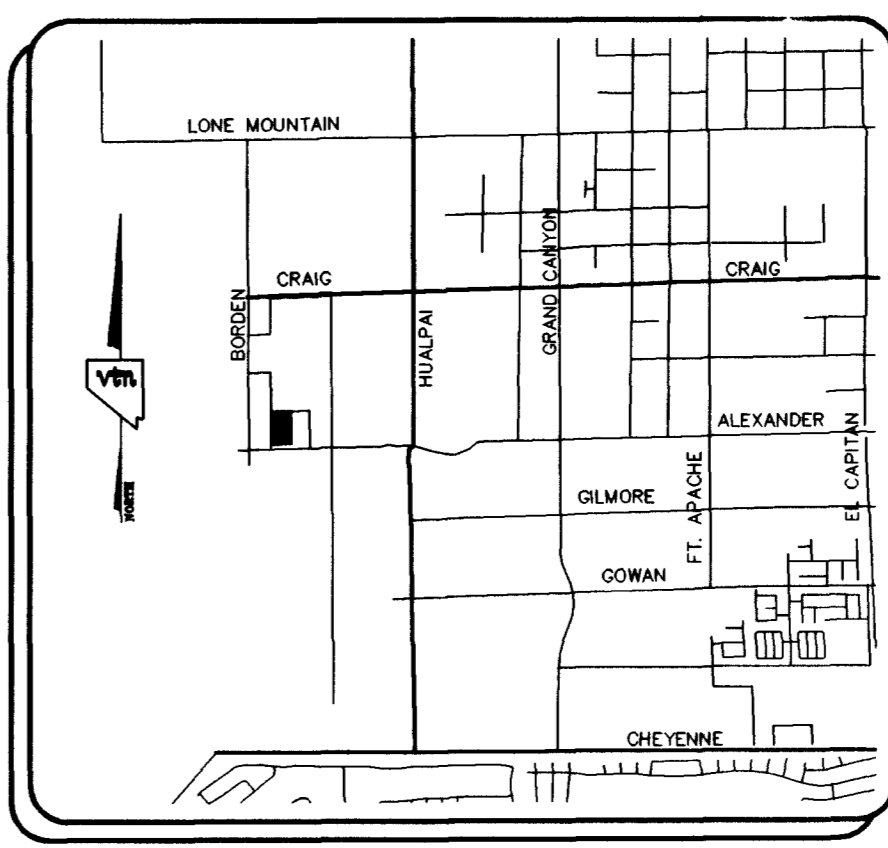
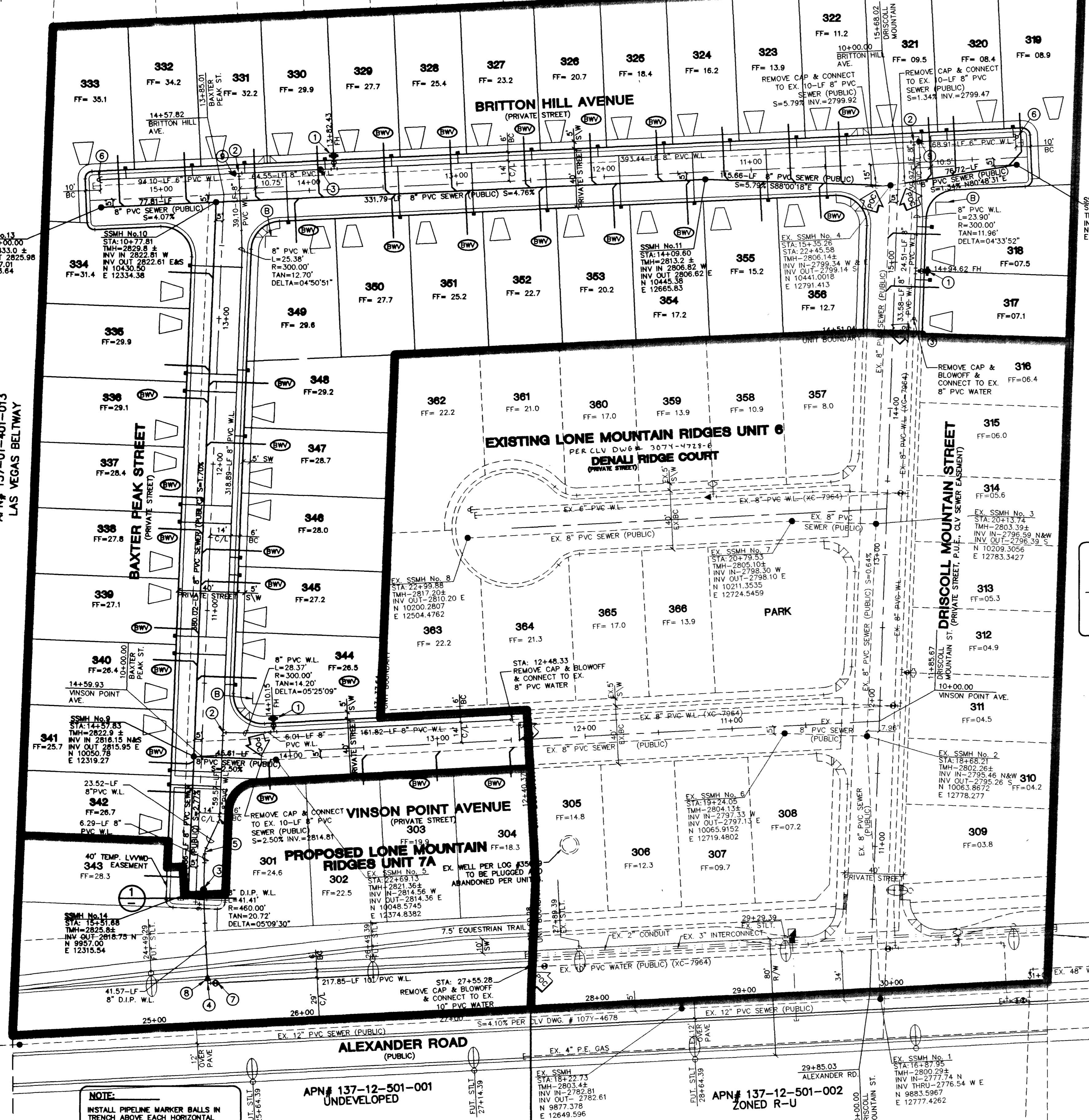
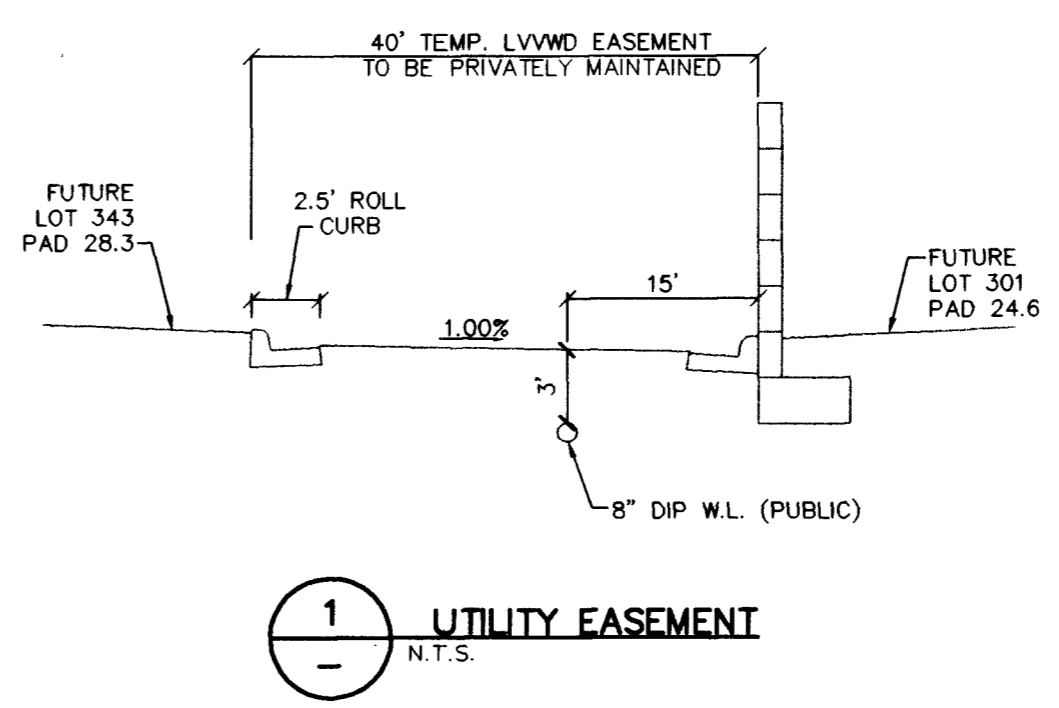


**EXISTING LONE MOUNTAIN HEIGHTS UNIT 6**  
 REFER TO IMPROVEMENT PLANS PER VIN INC.  
 CLV DWG. NO. 1077-4646-8



**ENGINEER DISCLAIMER NOTE:**  
 UTILITY LOCATIONS SHOWN HEREON ARE APPROXIMATE ONLY. IT SHALL BE THE CONTRACTOR'S RESPONSIBILITY TO DETERMINE THE EXACT HORIZONTAL AND VERTICAL LOCATION OF ALL EXISTING UNDERGROUND AND OVERHEAD UTILITIES AND NOTIFY THE DESIGN ENGINEER IMMEDIATELY OF ANY DISCREPANCIES PRIOR TO COMMENCING CONSTRUCTION.  
 NO REPRESENTATION IS MADE THAT ALL EXISTING UTILITIES ARE SHOWN HEREON. THE ENGINEER ASSUMES NO RESPONSIBILITY FOR UTILITIES NOT SHOWN OR UTILITIES NOT SHOWN IN THEIR PROPER LOCATION.

**PRIVATE STREET NOTE:**  
 ALL PRIVATE STREETS ARE P.U.E.'S, PUBLIC SEWER EASEMENT AND PUBLIC DRAINAGE EASEMENTS TO BE PRIVATELY MAINTAINED BY H.O.A.



**ESTIMATE OF QUANTITIES LEGEND**

	WATER	PUBLIC	PRIVATE
① FIRE HYDRANT ASSEMBLY INCLUDING: 8"x6" TEE, 6" CV (PER UDACS PLATE No. 7)		3 EA.	0 EA.
② 8" TEE		3 EA.	0 EA.
③ 8" GATE VALVE		2 EA.	0 EA.
④ 10" 90° ELBOW		1 EA.	0 EA.
⑤ 8" 22.5° ELBOW		2 EA.	0 EA.
⑥ CAP W/2" B.O. ASSEMBLY (PER UDACS PLATE No. 4)		2 EA.	0 EA.
⑦ 10" GATE VALVE		1 EA.	0 EA.
⑧ 10"x8" REDUCER		1 EA.	0 EA.
⑨ 8"x6" REDUCER		2 EA.	0 EA.
W/ 5/8" METER (PER UDACS PLATE 1B)		39 EA.	0 EA.
1" METER W/ 1" RPPA (PER UDACS PLATE 1D & 11A)		0 EA.	0 EA.
TOTAL SERVICES INSTALLED WITH THIS UNIT		39 EA.	

6" PVC WATER MAIN(PUBLIC)	163 LF.	0 LF.
8" PVC WATER MAIN(PUBLIC)	1,517 LF.	0 LF.
8" DIP WATER MAIN(PUBLIC)	71 LF.	0 LF.
10" PVC WATER MAIN(PUBLIC)	218 LF.	0 LF.

**SEWER**

STANDARD MANHOLE PUBLIC	6 EA.	0 EA.
4" SEWER LATERALS(PRIVATE)	0 LF.	1,491 LF.
4" SEWER WYES (PRIVATE)	0 EA.	44 EA.
8" SEWER MAIN(PUBLIC)	1,122 LF.	0 LF.
BACKWATER VALVES(PRIVATE)	0 EA.	27 EA.

**SEWER CONTRIBUTION (BASED ON 38 LOTS)**  
 AVERAGE DAILY FLOW = 0.00975 MGD.  
 PEAK FLOW (PF=3.5)= 0.034125 MGD.

**TRAFFIC**

	PUBLIC	PRIVATE
R1-1 "STOP" SIGN & (2) D3 "STREET NAME" SIGNS	0 EA.	0 EA.
(2) D3 "STREET NAME SIGNS"	0 EA.	3 EA.

- DRIVEWAY LOCATION (SCHEMATIC ONLY) 39 EA.
- POINT OF CONNECTION (UTILITIES)
- SIGHT VISIBILITY EASEMENT SEE SHEETS TS1 & TS2 FOR TRAFFIC / STREETLIGHTING

**APPROVAL:**  
 LAS VEGAS VALLEY WATER DISTRICT 1-3.5 DATE 1/10/03  
 CITY OF LAS VEGAS FIRE MARSHAL 1/10/03 DATE

**LAS VEGAS FIRE DEPARTMENT**

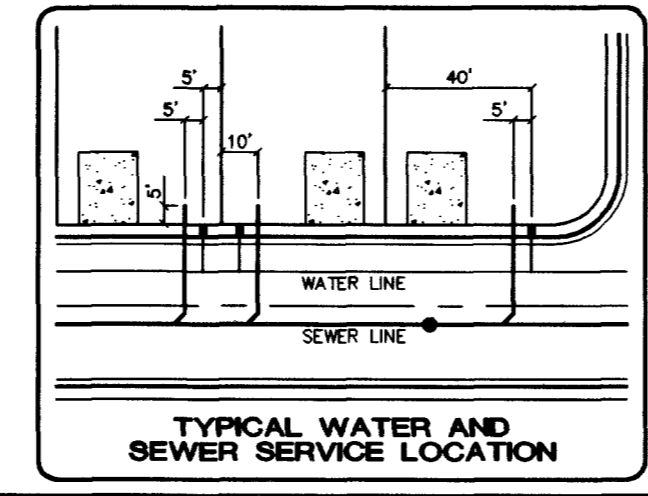
FIRE FLOW REQUIREMENT IS 1,500 GALLONS/MIN. AT 20 LBS./SQ.IN. RESIDUAL.  
 BASED ON:  
 SQUARE FOOTAGE: 2800  
 LARGEST AREA BETWEEN SEPERATION WALLS:  
 HEIGHT: 2 STORY  
 TYPE OF CONSTRUCTION:  
 EXPOSURES: 10' MIN.  
 SPRINKLER SYSTEM: NONE  
 OCCUPANCY: SINGLE FAMILY RESIDENCE  
 ROOF CONSTRUCTION: CONCRETE TILE  
 REVIEWED BY: [Signature]  
 DATE: 1/10/03  
 PROVIDE FIRE LINE IDENTIFICATION PER CITY ORD. 5115

NEVADA POWER COMPANY APPROVAL IS ONLY FOR THE PLACEMENT AND CLEARANCE OF STREET LIGHT AND SIGNAL LIGHT INSTALLATION.  
 NEVADA POWER COMPANY ACKNOWLEDGES THAT WE HAVE RECEIVED YOUR PLANS AND WILL PROVIDE SERVICE TO ALL ELECTRICAL NEEDS ASSOCIATED WITH THIS PROJECT. NEVADA POWER COMPANY RESERVES THE RIGHT TO ADDRESS ANY EXISTING OR FUTURE CONFLICTS ONCE THE FINAL DESIGN IS COMPLETED. THE NEW SERVICE AND THE RESOLUTION OF ANY CONFLICTS WILL BE ACCOMPLISHED PURSUANT TO THE NEVADA PUBLIC UTILITY COMMISSION'S RULES AND REGULATIONS.

**BENCHMARK**  
 PROJECT VERTICAL DATUM: NAVD88  
 CITY OF LAS VEGAS BENCHMARK 11V00-4SES  
 NAVD88 ELEV: 713.8077 METERS (2341.88 FEET)  
 RIVET AND PLATE IN TOP OF CURB, NORTHWEST RETURN OF ALEXANDER ROAD AND BUFFALO DRIVE  
 PROJECT IS TO BE CONSTRUCTED WITH 1992 DATUM.  
 REFERENCE: (ELEV: 713.8077+042=713.8497 METERS 2341.88+14=2342.02 FEET)  
**BASIS OF BEARINGS:**  
 SOUTH 01° 42' 30" WEST, BEING THE CENTERLINE OF VEGAS VISTA TRAIL, NORTH OF ITS INTERSECTION WITH ALEXANDER ROAD, AS SHOWN ON THAT PLAT OF THE "LONE MOUNTAIN HEIGHTS - UNIT 1", ON FILE IN THE OFFICE OF THE COUNTY RECORDER, CLARK COUNTY, NEVADA, IN BOOK 96 OF PLATS, AT PAGE 81.

Call before you Dig 1-800-227-2600  
 Call before you Overhead 1-702-593-6111

**SEWER NOTE:**  
 MANHOLE STATIONING IS BASED ON SEWER LENGTHS FROM MANHOLE TO TO MANHOLE. ALL MANHOLES ARE 48" SIZED MANHOLES PER STD.DWG# SD-1. MANHOLES TEN (10') FEET OR DEEPER ARE REQUIRED TO HAVE LOCKING MANHOLE COVERS.  
 FOR ALL UTILITY NOTES, SEE GENERAL NOTE SHEET # C3.



**KB HOME**  
 750 PILOT ROAD, SUITE F  
 LAS VEGAS, NEVADA 89119  
 (702) 614-2500

**MASTER UTILITY PLAN**  
**LONE MOUNTAIN RIDGES UNIT 7**

**APPROVAL:**  
 AUG 2002  
 DESIGNED BY: [Signature]  
 CHECKED BY: [Signature]  
 PROJECT NO: 6058-7  
 SCALE: 1"=40' HORIZ. 1"=8' VERT.  
 SHEET 05 OF 13 SHEETS  
 DRAWING NO. 3074-4728-7