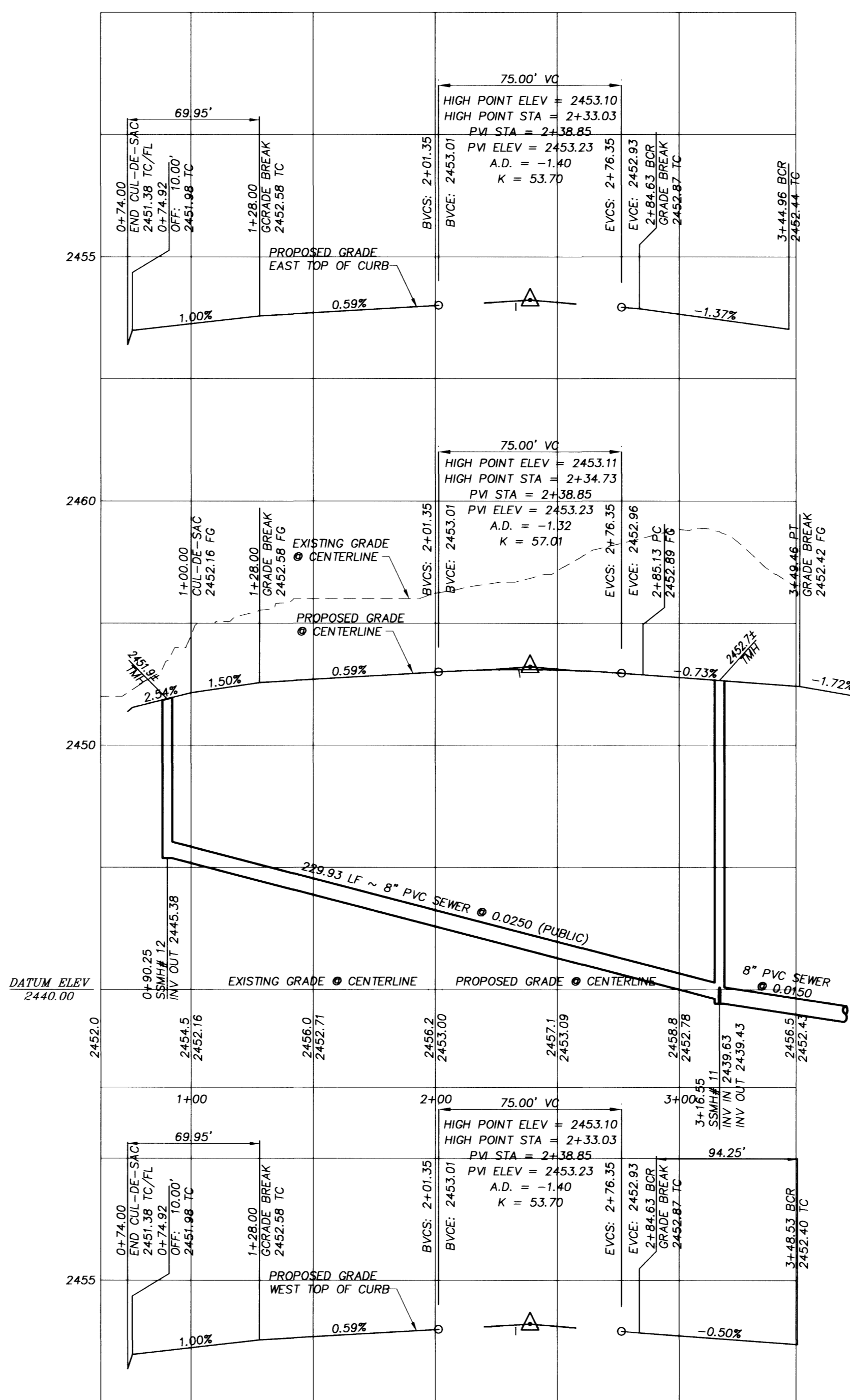


**EL CAPITAN WAY**  
HORIZONTAL SCALE: 1"=40'  
VERTICAL SCALE: 1"=4'



**SILVER SABER COURT**  
HORIZONTAL SCALE: 1"=40'  
VERTICAL SCALE: 1"=4'

**H.C. RAMP DATA**  
PER STANDARD DRAWING 235

NO.	"A"	"B"	CASE
A	8.00	8.00	I
B	9.50	4.50	I
C	15.00	4.50	I
D	4.50	9.50	I
E	12.0	4.50	I

- LEGEND**
- PROPERTY LINE / RIGHT-OF-WAY
  - "L" TYPE CURB AND GUTTER
  - "A" TYPE CURB
  - EXISTING CURB AND GUTTER
  - PROPOSED WATER LINE (SIZE AS SHOWN)
  - PROPOSED SEWER LINE (SIZE AS SHOWN)
  - EXISTING UTILITY (AS SHOWN)
  - CROSS GUTTER
  - WHEELCHAIR RAMP
  - CUT OR FILL SLOPE
  - PROPOSED PAVEMENT AREA
  - PROPOSED ELEVATION (DESCRIPTION AS SHOWN)
  - EXISTING ELEVATION (DESCRIPTION AS SHOWN)
  - EXISTING DESIGN ELEVATION (DESCRIPTION AS SHOWN)
  - DETAIL OF SECTION NUMBER SHEET DETAIL IS SHOWN
  - BLOCK WALL
  - RETAINING WALL
  - LOT NUMBER
  - FINISHED FLOOR ELEVATION
  - PAD ELEVATION
  - EXISTING PAVEMENT TO BE REMOVED AND REPLACED

- GRADING NOTES**
- TETRA TECH SHALL BE NOTIFIED IMMEDIATELY OF ANY DISCREPANCIES IN THE PLANS OR CONDITIONS IN THE FIELD.
  - ALL WORK TO BE PERFORMED OUTSIDE OF THE PROJECT BOUNDARY AND ON PRIVATE PROPERTY SHALL NOT BE PERFORMED UNTIL WRITTEN PERMISSION AND EASEMENT HAVE BEEN OBTAINED FROM THE OFFSITE OWNER AND GIVEN TO CITY LAS VEGAS PUBLIC WORKS.
  - FOR AREAS THAT ARE FLATTER THAN 2:1 SLOPE, OR LESS THAN 1' ELEVATION DIFFERENCE, SCARPS ARE NOT SHOWN ON PLAN FOR CLARITY PURPOSES.
  - ALL SLOPE AREAS SHALL HAVE A MINIMUM ONE FOOT SHOULDER NEXT TO WALL PRIOR TO STARTING SLOPE.
  - PAD SECTION SHOWN ON PLANS IS FOR REFERENCE ONLY. FOR ACTUAL SECTION, REFER TO GEOTECHNICAL REPORT FOR SOILS ENGINEER'S RECOMMENDATION.
  - ALL SIDEWALK INSTALLATIONS SHALL CONFORM TO ADA REQUIREMENTS.

- CONSTRUCTION NOTES**
- CONSTRUCT 3" AC PAVING OVER 10" TYPE II PER STD. DWG. 207
  - SAWCUT TO CLEAN EDGE, MATCH EXISTING
  - CONSTRUCT 5" AC PAVING OVER 5.5" TYPE II ON 9" TYPE I BASE PER STD. DWG. 203
  - CONSTRUCT SIDEWALK RAMP PER STD. DWG. 235
  - CONSTRUCT 1" TYPE CURB AND GUTTER PER STD. DWG. 216
  - CONSTRUCT CONCRETE SIDEWALK PER STD. DWG. 234
  - CONSTRUCT 8" CROSS GUTTER PER STD. DWG. 228
  - CONSTRUCT 4" AC PAVING OVER 4.5" TYPE II ON 9" TYPE I BASE PER STD. DWG. 205
  - CONSTRUCT DEPRESSED CURB PER DETAIL N, SHEET D11

Avoid cutting underground utility lines. It's costly.  
**Call before you Dig**  
1-800-227-2600  
UNDERGROUND SERVICE (USA)

Avoid overhead power line contact.  
**Call before you Overhead**  
1-702-593-6111  
NEVADA POWER TRANSMISSION SAFETY SERVICES DEPARTMENT

**BENCHMARK**  
CITY OF LAS VEGAS BENCHMARK - NO.18 1LV00-4SES  
RIVET AND SQUARE ALUMINUM PLATE IN TOP OF CURB,  
NORTHWEST RETURN OF ALEXANDER ROAD AND BUFFALO  
DRIVE  
ELEVATION = 713.8077 METERS (NAVVD88)  
ELEVATION = 2341.88 FEET (NAVVD88)

**BASIS OF BEARING**  
S 89°41'26" W BEING THE NORTH LINE OF THE NORTHWEST  
QUARTER (NW 1/4) OF THE NORTHWEST QUARTER (NW 1/4)  
SECTION 9, TOWNSHIP 20 SOUTH, RANGE 60 EAST, M.D.M.,  
CITY OF LAS VEGAS, CLARK COUNTY, NEVADA AS SHOWN IN  
BOOK 89, PAGE 68 OF PLATS IN THE CLARK COUNTY  
RECORDER'S OFFICE, CLARK COUNTY, NEVADA.

KB HOME NEVADA, INC.  
750 PILOT ROAD, SUITE F  
LAS VEGAS, NEVADA 89119  
(702) 614-2500

**TETRA TECH, INC.**  
INFRASTRUCTURE SOLUTIONS GROUP  
401 N. Durand Dr., Suite 100, Las Vegas, Nevada 89145  
(702) 242-4200

STREET PLAN AND PROFILE  
EL CAPITAN WY./SILVER SABER CT.

LONE MOUNTAIN SPRINGS  
CITY OF LAS VEGAS, NEVADA

PROJECT NO.  
**P08042-0029**

DATE  
**8-14-07**

SHEET  
**PP3**  
12 OF 19

DRAWING NO.  
**3074-4717**

QUALITY CONTROL BY: [ ]  
DESIGNED BY: [ ]  
CHECKED BY: [ ]  
SCALE: [ ]

SEAL  
GARY S. ANZIO  
REGISTERED PROFESSIONAL ENGINEER  
STATE OF NEVADA  
NO. 45971  
EXPIRES 12/31/08

REVISION