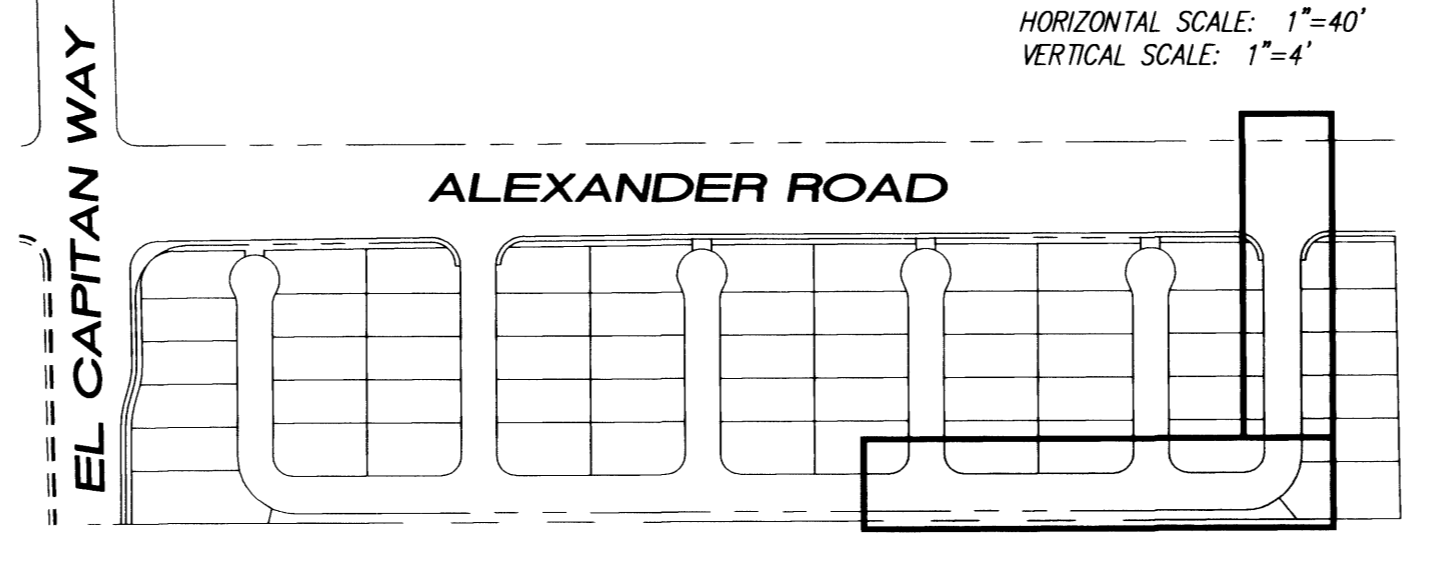


FORTUNE GEM AVENUE
HORIZONTAL SCALE: 1"=40'
VERTICAL SCALE: 1"=4'

GOLD CHIP DRIVE
HORIZONTAL SCALE: 1"=40'
VERTICAL SCALE: 1"=4'



H.C. RAMP DATA
PER STANDARD DRAWING 235

NO.	"A"	"B"	CASE
A	8.00	8.00	/
B	9.50	4.50	/
C	15.00	4.50	/
D	4.50	9.50	/
E	12.0	4.50	/

- LEGEND**
- PROPERTY LINE / RIGHT-OF-WAY
 - "L" TYPE CURB AND GUTTER
 - "A" TYPE CURB
 - EXISTING CURB AND GUTTER
 - PROPOSED WATER LINE (SIZE AS SHOWN)
 - PROPOSED SEWER LINE (SIZE AS SHOWN)
 - EXISTING UTILITY (AS SHOWN)
 - CROSS GUTTER
 - WHEELCHAIR RAMP
 - CUT OR FILL SLOPE
 - PROPOSED PAVEMENT AREA
 - PROPOSED ELEVATION (DESCRIPTION AS SHOWN)
 - EXISTING ELEVATION (DESCRIPTION AS SHOWN)
 - EXISTING DESIGN ELEVATION (DESCRIPTION AS SHOWN)
 - DETAIL OF SECTION NUMBER SHEET DETAIL IS SHOWN
 - BLOCK WALL
 - RETAINING WALL
 - LOT NUMBER
 - FINISHED FLOOR ELEVATION
 - PAD ELEVATION
 - EXISTING PAVEMENT TO BE REMOVED AND REPLACED

- GRADING NOTES**
- TETRA TECH SHALL BE NOTIFIED IMMEDIATELY OF ANY DISCREPANCIES IN THE PLANS OR CONDITIONS IN THE FIELD.
 - ALL WORK TO BE PERFORMED OUTSIDE OF THE PROJECT BOUNDARY AND ON PRIVATE PROPERTY SHALL NOT BE PERFORMED UNTIL WRITTEN PERMISSION AND EASEMENT HAVE BEEN OBTAINED FROM THE OFFSITE OWNER AND GIVEN TO CITY LAS VEGAS PUBLIC WORKS.
 - FOR AREAS THAT ARE FLATTER THAN 2:1 SLOPE, OR LESS THAN 1" ELEVATION DIFFERENCE, SCARPS ARE NOT SHOWN ON PLAN FOR CLARITY PURPOSES.
 - ALL SLOPE AREAS SHALL HAVE A MINIMUM ONE FOOT SHOULDER NEXT TO WALL PRIOR TO STARTING SLOPE.
 - PAD SECTION SHOWN ON PLANS IS FOR REFERENCE ONLY. FOR ACTUAL SECTION, REFER TO GEOTECHNICAL REPORT FOR SOILS ENGINEERS' RECOMMENDATION.
 - ALL SIDEWALK INSTALLATIONS SHALL CONFORM TO ADA REQUIREMENTS.

- CONSTRUCTION NOTES**
- CONSTRUCT 3" AC PAVING OVER 10" TYPE II PER STD. DWG. 207
 - SAWCUT TO CLEAN EDGE, MATCH EXISTING
 - CONSTRUCT 5" AC PAVING OVER 5.5" TYPE II ON 9" TYPE I BASE PER STD. DWG. 203
 - CONSTRUCT SIDEWALK RAMP PER STD. DWG. 235
 - CONSTRUCT "L" TYPE CURB AND GUTTER PER STD. DWG. 216
 - CONSTRUCT CONCRETE SIDEWALK PER STD. DWG. 234
 - CONSTRUCT 8" CROSS GUTTER PER STD. DWG. 228
 - CONSTRUCT 4" AC PAVING OVER 4.5" TYPE II ON 9" TYPE I BASE PER STD. DWG. 205
 - CONSTRUCT DEPRESSED CURB PER DETAIL N, SHEET D71

Avoid cutting underground utility lines. It's costly.
Call before you Dig
1-800-227-2600
UNDERGROUND SERVICE (USA)

Avoid overhead power line contact.
Call before you Overhead
1-702-593-6111
Nevada Power Corporation
SAFETY SERVICES DEPARTMENT

BENCH MARK
CITY OF LAS VEGAS BENCHMARK - NO.18 1LV00-4S25
RIVET AND SQUARE ALUMINUM PLATE IN TOP OF CURB, NORTHWEST RETURN OF ALEXANDER ROAD AND BUFFALO DRIVE
ELEVATION = 713.8077 METERS (NAVOD88)
ELEVATION = 2344.188 FEET (NAVOD88)

BASIS OF BEARING
S 89°41'26" W BEING THE NORTH LINE OF THE NORTHWEST QUARTER (NW 1/4) OF THE NORTHWEST QUARTER (NW 1/4) OF SECTION 9, TOWNSHIP 20 SOUTH, RANGE 60 EAST, M.D.M., CITY OF LAS VEGAS, CLARK COUNTY, NEVADA AS SHOWN IN BOOK 89, PAGE 68 OF PLATS IN THE CLARK COUNTY RECORDER'S OFFICE, CLARK COUNTY, NEVADA.

KEYMAP
SCALE: 1"=200'

KB HOME NEVADA, INC.
750 PILOT ROAD, SUITE F
LAS VEGAS, NEVADA 89119
(702) 614-2500

TETRA TECH, INC.
INFRASTRUCTURE SOLUTIONS GROUP
401 N. Buffalo Dr. Suite 100, Las Vegas, Nevada 89145
(702) 242-4000

PLAN AND PROFILE
FORTUNE GEM AV AND GOLD CHIP DR.

LONE MOUNTAIN SPRINGS
CITY OF LAS VEGAS, NEVADA

QUALITY CONTROL BY: SHEET
DESIGNED BY: QUALITY CONTROL BY:
CHECKED BY: SCALE:
PROJECT NO. P08042-0029
DATE: 08-14-02

SEAL
REGISTERED PROFESSIONAL ENGINEER - STATE OF NEVADA
GARY S. MAZIO
CIVIL
No. 49371
Exp. 08-14-02

SHEET **PP7**
16 OF 19
DRAWING NO. 307Y-4717