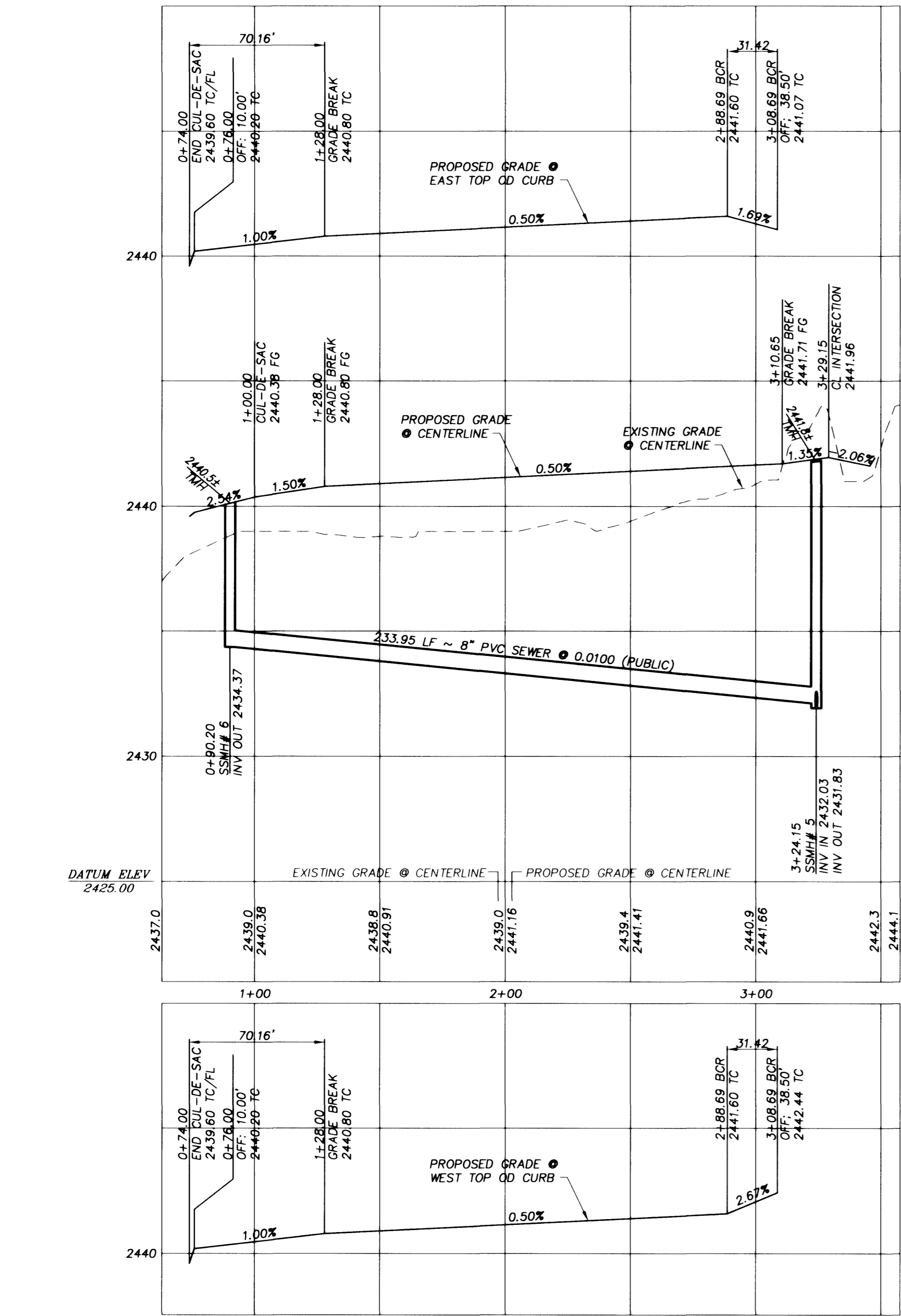
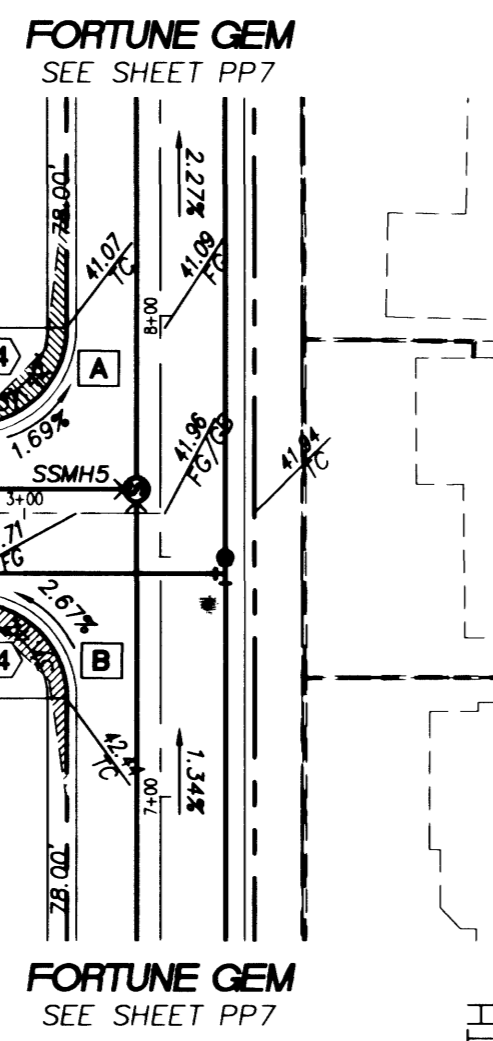


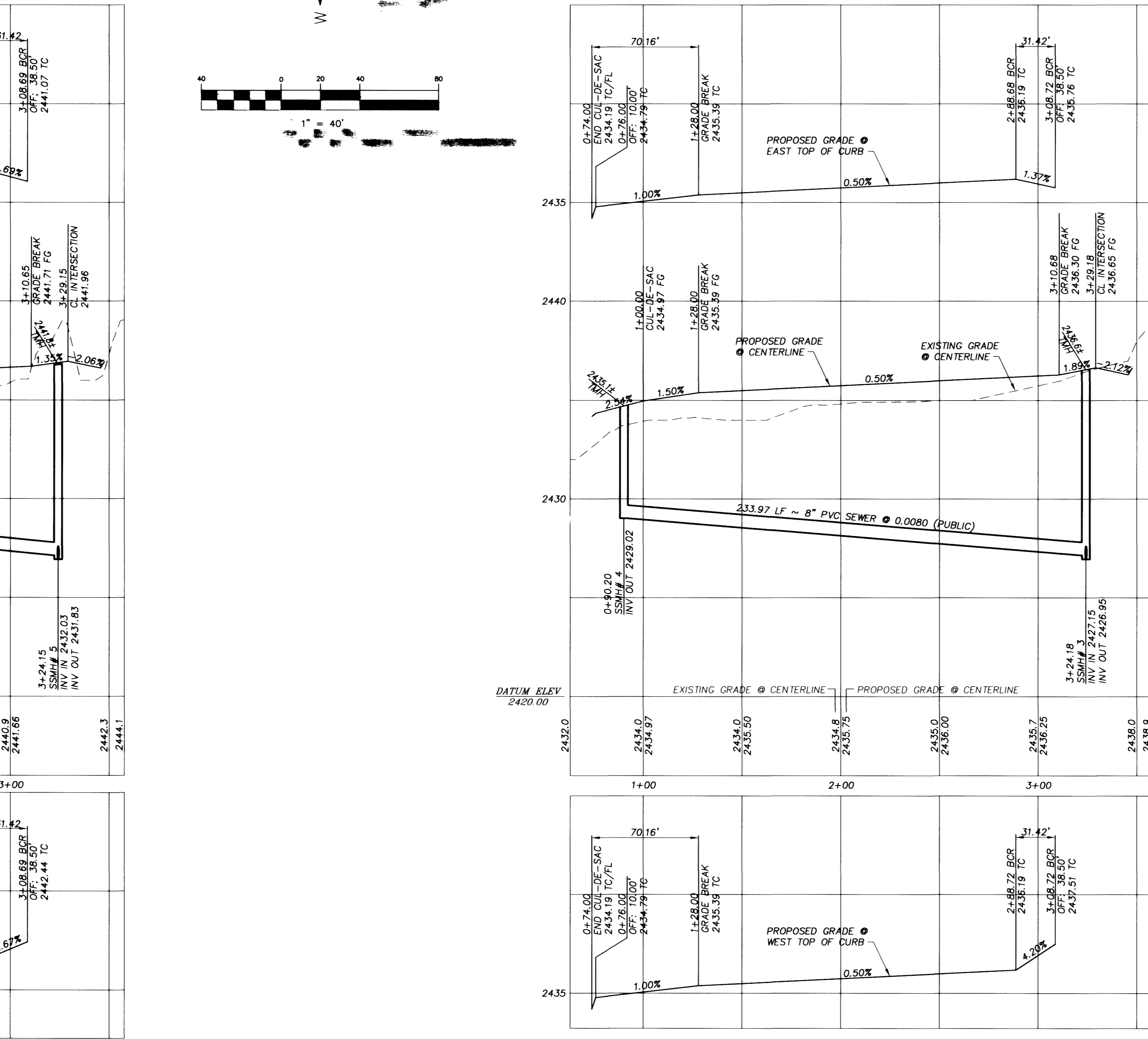
EXPRESS CHARM COURT
HORIZONTAL SCALE: 1"=40' PUBLIC STREET



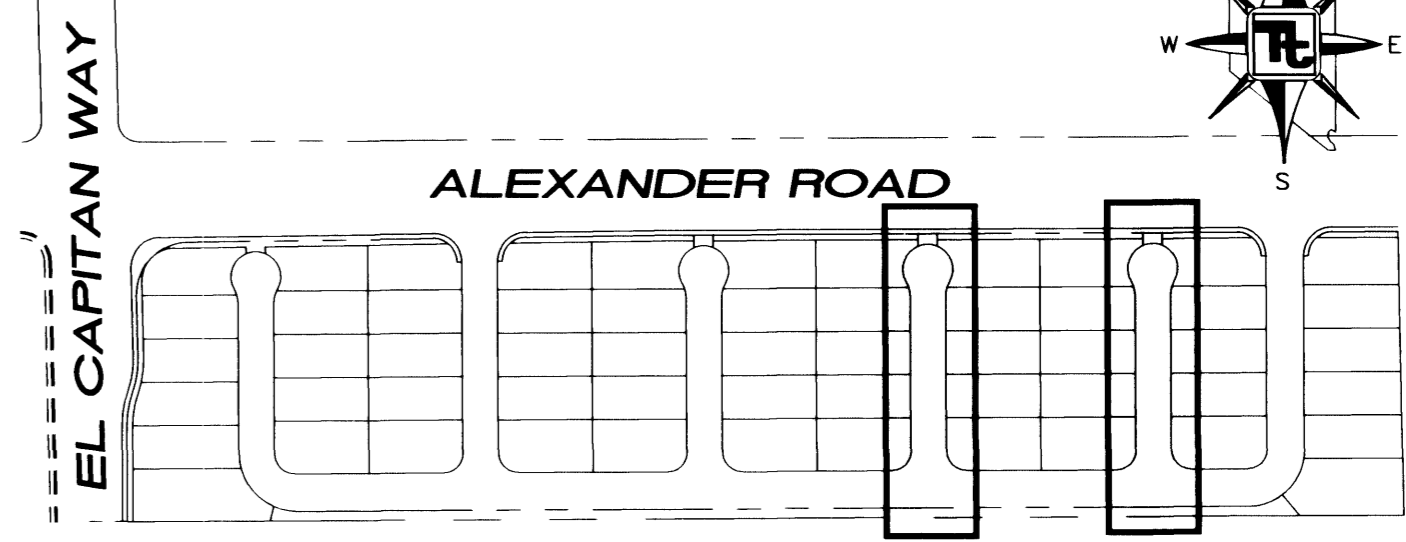
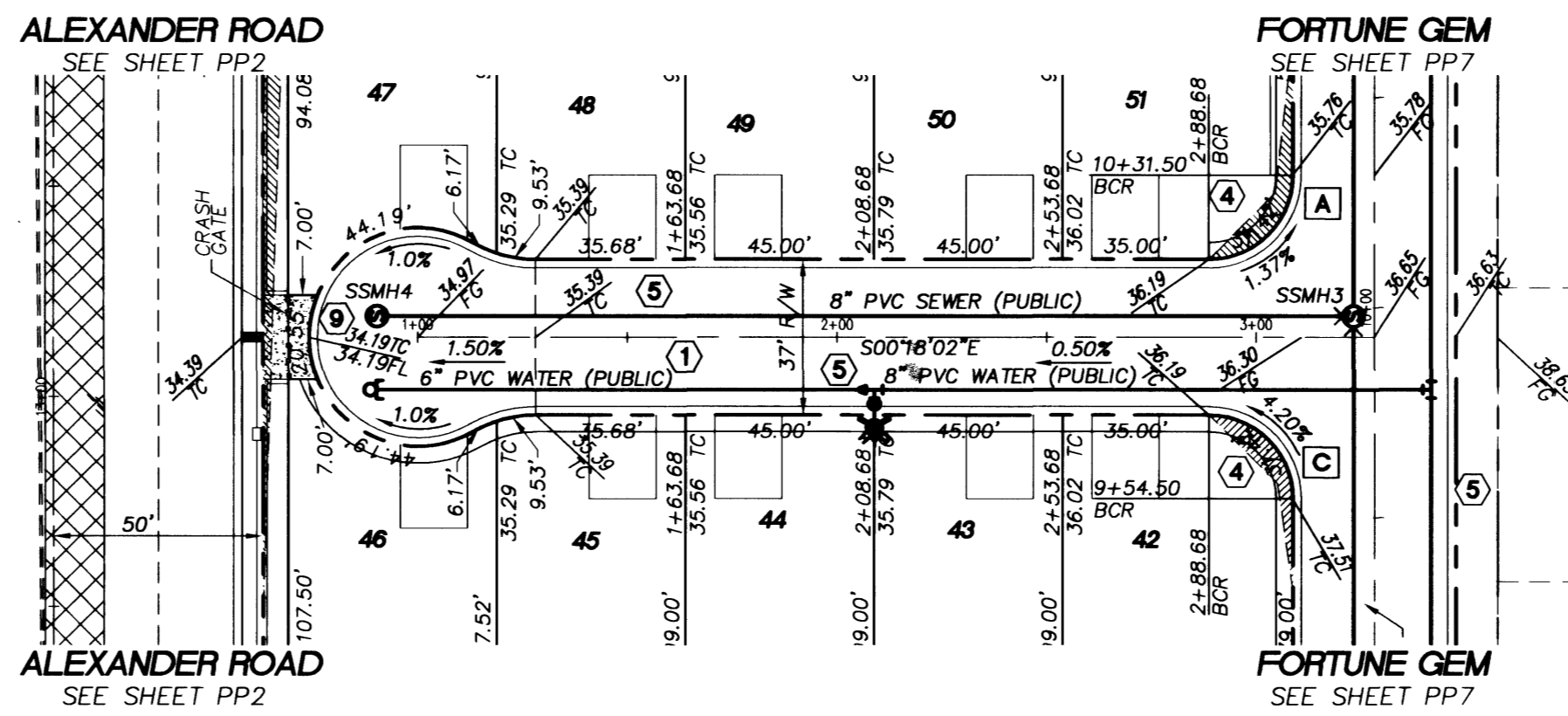
EXPRESS CHARM COURT
HORIZONTAL SCALE: 1"=40' PUBLIC STREET
VERTICAL SCALE: 1"=4'



CRYSTAL TRIP COURT
HORIZONTAL SCALE: 1"=40' PUBLIC STREET



CRYSTAL TRIP COURT
HORIZONTAL SCALE: 1"=40' PUBLIC STREET
VERTICAL SCALE: 1"=4'



KEYMAP
SCALE: 1"=200'

H.C. RAMP DATA
PER STANDARD DRAWING 235

NO.	"A"	"B"	"C"	"D"	"E"
A	8.00	8.00	1		
B	9.50	4.50	1		
C	15.00	4.50	1		
D	4.50	9.50	1		
E	12.0	4.50	1		

LEGEND

- PROPERTY LINE / RIGHT-OF-WAY
- ==== "L" TYPE CURB AND GUTTER
- ==== "A" TYPE CURB
- EXISTING CURB AND GUTTER
- PROPOSED WATER LINE (SIZE AS SHOWN)
- PROPOSED SEWER LINE (SIZE AS SHOWN)
- EXISTING UTILITY (AS SHOWN)
- CROSS GUTTER
- WHEELCHAIR RAMP
- CUT OR FILL SLOPE
- PROPOSED PAVEMENT AREA
- PROPOSED ELEVATION (DESCRIPTION AS SHOWN)
- EXISTING ELEVATION (DESCRIPTION AS SHOWN)
- EXISTING DESIGN ELEVATION (DESCRIPTION AS SHOWN)
- 2
OFF2
DETAIL OF SECTION NUMBER SHEET DETAIL IS SHOWN
- BLOCK WALL
- RETAINING WALL
- LOT NUMBER
- FINISHED FLOOR ELEVATION
- PAD ELEVATION
- EXISTING PAVEMENT TO BE REMOVED AND REPLACED

GRADING NOTES

1. TETRA TECH SHALL BE NOTIFIED IMMEDIATELY OF ANY DISCREPANCIES IN THE PLANS OR CONDITIONS IN THE FIELD.
2. ALL WORK TO BE PERFORMED OUTSIDE OF THE PROJECT BOUNDARY AND ON PRIVATE PROPERTY SHALL NOT BE PERFORMED UNTIL WRITTEN PERMISSION AND EASEMENT HAVE BEEN OBTAINED FROM THE OFF-SITE OWNER AND GIVEN TO CITY LAS VEGAS PUBLIC WORKS.
3. FOR AREAS THAT ARE FLATTER THAN 2:1 SLOPE, OR LESS THAN 1' ELEVATION DIFFERENCE, SCARPS ARE NOT SHOWN ON PLAN FOR CLARITY PURPOSES.
4. ALL SLOPE AREAS SHALL HAVE A MINIMUM ONE FOOT SHOULDER NEXT TO WALL PRIOR TO STARTING SLOPE.
5. PAD SECTION SHOWN ON PLANS IS FOR REFERENCE ONLY. FOR ACTUAL SECTION, REFER TO GEOTECHNICAL REPORT FOR SOILS ENGINEERS' RECOMMENDATION.
6. ALL SIDEWALK INSTALLATIONS SHALL CONFORM TO ADA REQUIREMENTS.

CONSTRUCTION NOTES

- 1 CONSTRUCT 3" AC PAVING OVER 10" TYPE II PER STD. DWG. 207
- 2 SAWCUT TO CLEAN EDGE, MATCH EXISTING
- 3 CONSTRUCT 5" AC PAVING OVER 5.5" TYPE II ON 9" TYPE I BASE PER STD. DWG. 203
- 4 CONSTRUCT SIDEWALK RAMP PER STD. DWG. 235
- 5 CONSTRUCT "L" TYPE CURB AND GUTTER PER STD. DWG. 216
- 6 CONSTRUCT CONCRETE SIDEWALK PER STD. DWG. 234
- 7 CONSTRUCT 8" CROSS GUTTER PER STD. DWG. 228
- 8 CONSTRUCT 4" AC PAVING OVER 4.5" TYPE II ON 9" TYPE I BASE PER STD. DWG. 205
- 9 CONSTRUCT DEPRESSED CURB PER DETAIL N, SHEET DT1

Avoid cutting underground utility lines. If's costly.
Call before you Dig
1-800-227-2600
UNDERGROUND SERVICE (USA)

Avoid overhead power line contact.
Call before you Overhead
1-702-593-6111
NEVA POWER DISTRIBUTION SAFETY SERVICES DEPARTMENT

BENCHMARK
CITY OF LAS VEGAS BENCHMARK - NO.18 1LV00-4SE5
RIVET AND SQUARE ALUMINUM PLATE IN TOP OF CURB,
NORTHWEST RETURN OF ALEXANDER ROAD AND BUFFALO DRIVE
ELEVATION = 713.8077 METERS (NAVDB88)
ELEVATION = 23441.88 FEET (NAVDB88)

BASS OF BEARING
S 89°41'26" W BEING THE NORTH LINE OF THE NORTHWEST QUARTER (NW 1/4) OF THE NORTHWEST QUARTER (NW 1/4) OF SECTION 9, TOWNSHIP 20 SOUTH, RANGE 60 EAST, M.D.M., CITY OF LAS VEGAS, CLARK COUNTY, NEVADA AS SHOWN IN BOOK 88, PAGE 88 OF PLATS IN THE CLARK COUNTY RECORDER'S OFFICE, CLARK COUNTY, NEVADA.

NO.	DATE	BY	REVISION

KB HOME NEVADA, INC.
750 PILOT ROAD, SUITE F
LAS VEGAS, NEVADA 89119

TETRA TECH, INC.
125 FRASTRUCTURE SOUTHWEST GROUP
401 N. Buffalo Dr. Suite 100, Las Vegas, Nevada 89145 (702) 242-4200

PLAN AND PROFILE
EXPRESS CHARM CT, CRYSTAL TRIP CT

LONE MOUNTAIN SPRINGS
CITY OF LAS VEGAS, NEVADA

SHEET
DRAWN BY:
DESIGNED BY:
CHECKED BY:
SCALE:
PROJECT NO.
P08042-0029

SEAL

PP5
14 OF 19
DRAWING NO.
3074-4717

44425

FILE: K:\020\Engineering\1020-PP-049 08/14/02 09:23:57 AM P01