

H.C. RAMP DATA
PER STANDARD DRAWING, 235

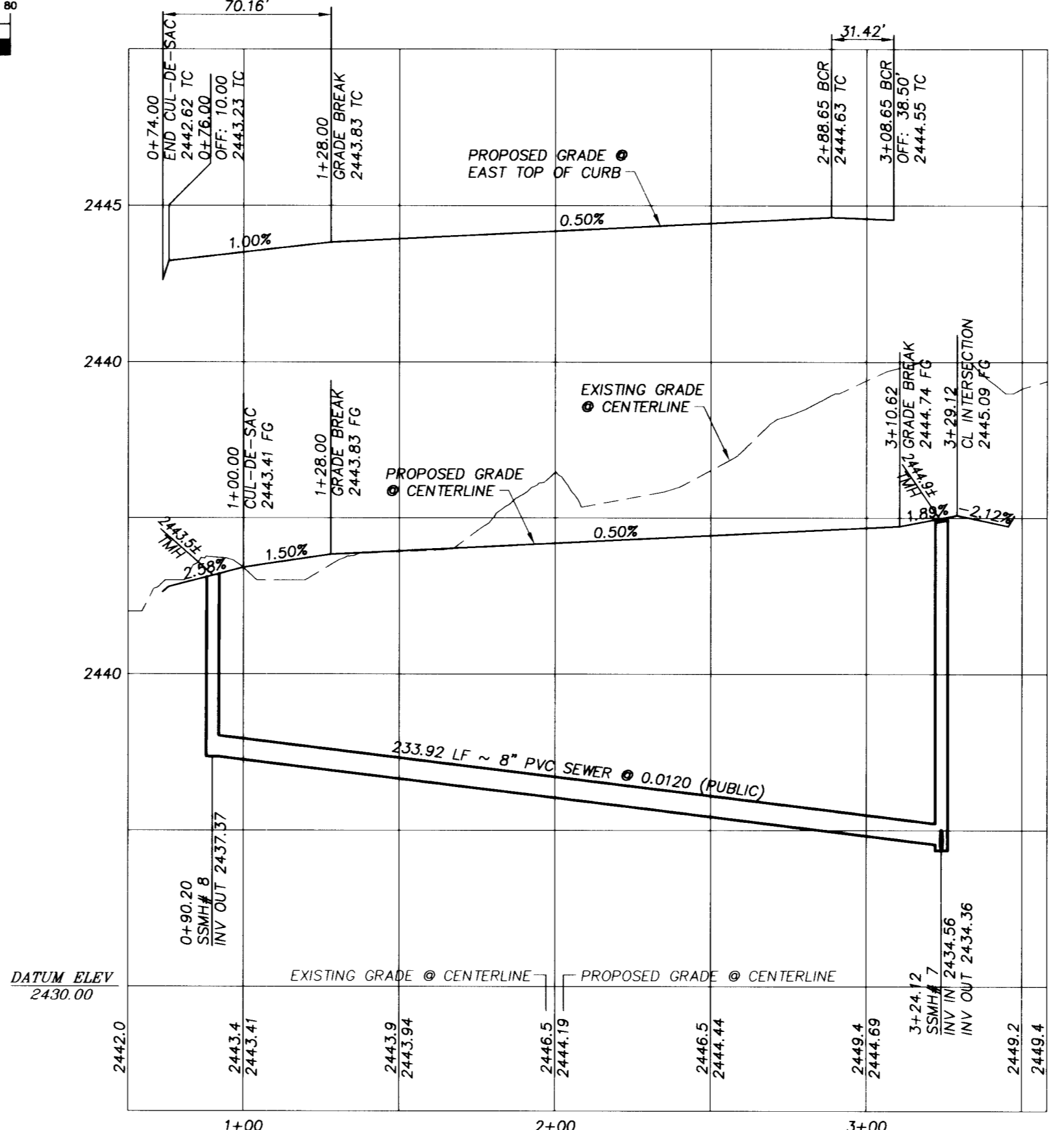
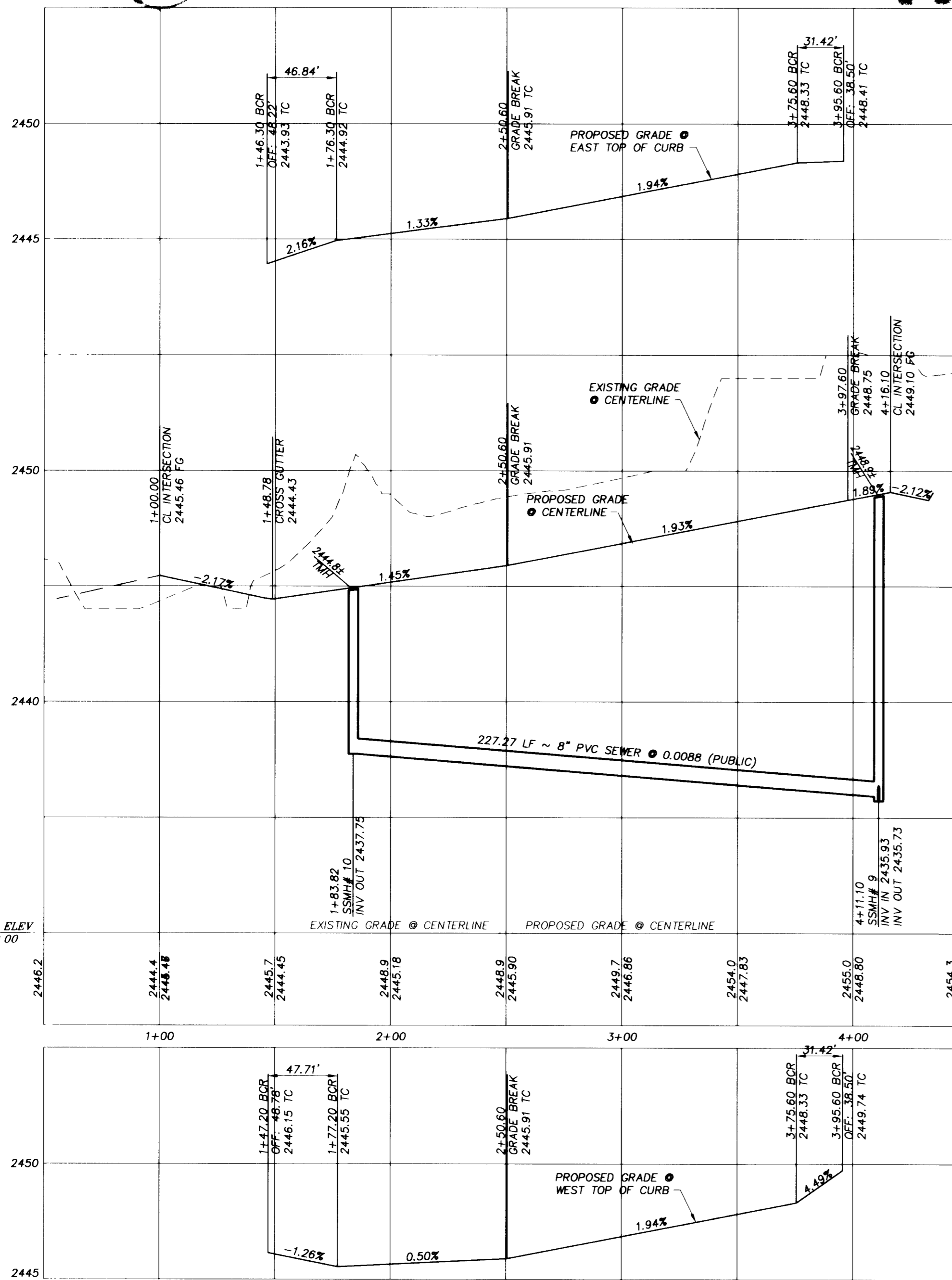
NO.	"A"	"B"	CASE
A	8.00	8.00	I
B	9.50	4.50	I
C	15.00	4.50	I
D	4.50	9.50	I
E	12.0	4.50	I

LEGEND

- PROPERTY LINE / RIGHT-OF-WAY
- "L" TYPE CURB AND GUTTER
- "A" TYPE CURB
- EXISTING CURB AND GUTTER
- PROPOSED WATER LINE (SIZE AS SHOWN)
- PROPOSED SEWER LINE (SIZE AS SHOWN)
- EXISTING UTILITY (AS SHOWN)
- CROSS GUTTER
- WHEELCHAIR RAMP
- CUT OR FILL SLOPE
- PROPOSED PAVEMENT AREA
- PROPOSED ELEVATION (DESCRIPTION AS SHOWN)
- EXISTING ELEVATION (DESCRIPTION AS SHOWN)
- EXISTING DESIGN ELEVATION (DESCRIPTION AS SHOWN)
- DETAIL OF SECTION NUMBER SHEET DETAIL IS SHOWN
- BLOCK WALL
- RETAINING WALL
- FINISHED FLOOR ELEVATION
- PAD ELEVATION
- EXISTING PAVEMENT TO BE REMOVED AND REPLACED

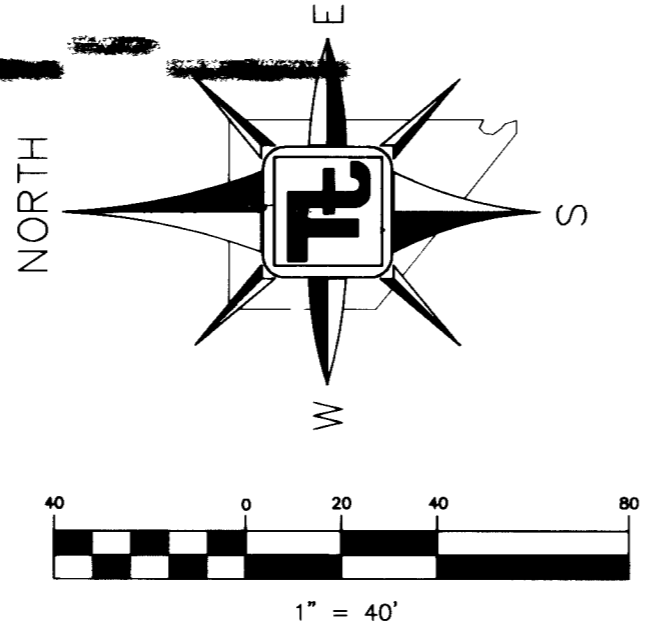
- GRADING NOTES**
- TETRA TECH SHALL BE NOTIFIED IMMEDIATELY OF ANY DISCREPANCIES IN THE PLANS OR CONDITIONS IN THE FIELD.
 - ALL WORK TO BE PERFORMED OUTSIDE OF THE PROJECT BOUNDARY AND ON PRIVATE PROPERTY SHALL NOT BE PERFORMED UNTIL WRITTEN PERMISSION AND EASEMENT HAVE BEEN OBTAINED FROM THE OFFSITE OWNER AND GIVEN TO CITY LAS VEGAS PUBLIC WORKS.
 - FOR AREAS THAT ARE FLATTER THAN 2:1 SLOPE, OR LESS THAN 1" ELEVATION DIFFERENCE, SCARPS ARE NOT SHOWN ON PLAN FOR CLARITY PURPOSES.
 - ALL SLOPE AREAS SHALL HAVE A MINIMUM ONE FOOT SHOULDER NEXT TO WALL PRIOR TO STARTING SLOPE.
 - PAD SECTION SHOWN ON PLANS IS FOR REFERENCE ONLY. FOR ACTUAL SECTION, REFER TO GEOTECHNICAL REPORT FOR SOILS ENGINEERS' RECOMMENDATION.
 - ALL SIDEWALK INSTALLATIONS SHALL CONFORM TO ADA REQUIREMENTS.

- CONSTRUCTION NOTES**
- CONSTRUCT 3" AC PAVING OVER 10" TYPE II PER STD. DWG. 207
 - SAWCUT TO CLEAN EDGE, MATCH EXISTING
 - CONSTRUCT 5" AC PAVING OVER 5.5" TYPE II ON 9" TYPE I BASE PER STD. DWG. 203
 - CONSTRUCT SIDEWALK RAMP PER STD. DWG. 235
 - CONSTRUCT 7.5" TYPE CURB AND GUTTER PER STD. DWG. 216
 - CONSTRUCT CONCRETE SIDEWALK PER STD. DWG. 234
 - CONSTRUCT 8" CROSS GUTTER PER STD. DWG. 228
 - CONSTRUCT 4" AC PAVING OVER 4.5" TYPE II ON 9" TYPE I BASE PER STD. DWG. 205
 - CONSTRUCT DEPRESSED CURB PER DETAIL N, SHEET D11



GOLD GLIMMER DRIVE
HORIZONTAL SCALE: 1"=40' PUBLIC STREET
VERTICAL SCALE: 1"=4'

RUBY FINTO COURT
HORIZONTAL SCALE: 1"=40' PUBLIC STREET
VERTICAL SCALE: 1"=4'



BENCHMARK
CITY OF LAS VEGAS BENCHMARK - NO.18 1LV00-45E5
RIVET AND SQUARE ALUMINUM PLATE IN TOP OF CURB,
NORTHWEST CORNER OF ALEXANDER ROAD AND BUFFALO
DRIVE
ELEVATION = 713.8077 METERS (NAVOD88)
ELEVATION = 23441.88 FEET (NAVOD88)

BASIS OF BEARING
S 89°41'26" W BEING THE NORTH LINE OF THE NORTHWEST
QUARTER (NW 1/4) OF THE NORTHWEST QUARTER (NW 1/4)
SECTION 9, TOWNSHIP 20 SOUTH, RANGE 60 EAST, M.D.M.,
CITY OF LAS VEGAS, CLARK COUNTY, NEVADA AS SHOWN IN
BOOK 89, PAGE 68 OF PLATS IN THE CLARK COUNTY
RECORDER'S OFFICE, CLARK COUNTY, NEVADA.

Avoid cutting underground utility lines. If's confy.
Call before you Dig
1-800-227-2600
UNDERGROUND SERVICE (USA)

Avoid overhead power line contact.
Call before you Overhead
1-702-593-6111
NEVADA POWER CORPORATION
UTILITY SERVICE DEPARTMENT

44424
Fred Marks

46292

KB HOME NEVADA, INC.
750 PILOT ROAD, SUITE F
LAS VEGAS, NEVADA 89119
(702) 614-2500

TETRA TECH, INC.
INFRASTRUCTURE SOUTH WEST GROUP
401 N. Durand Dr., Suite 100, Las Vegas, Nevada 89145
(702) 614-4500

PLAN AND PROFILE
GOLD GLIMMER DR AND RUBY FINTO CT

LONE MOUNTAIN SPRINGS
CITY OF LAS VEGAS, NEVADA

PROJECT NO. P08042-0029

13 OF 19

307Y-4717