

**DISCLAIMER NOTE:**  
 UTILITY LOCATIONS SHOWN HEREON ARE APPROXIMATE ONLY. IT SHALL BE THE CONTRACTOR'S RESPONSIBILITY TO DETERMINE THE EXACT HORIZONTAL AND VERTICAL LOCATION OF ALL EXISTING UNDERGROUND OR OVERHEAD UTILITIES PRIOR TO COMMENCING CONSTRUCTION. NO REPRESENTATION IS MADE THAT ALL EXISTING UTILITIES ARE SHOWN HEREON. THE ENGINEER ASSUMES NO RESPONSIBILITY FOR UTILITIES NOT SHOWN OR UTILITIES NOT SHOWN IN THEIR PROPER LOCATION.  
 CONTRACTOR TO NOTIFY ENGINEER OF ANY CHANGES OR DISCREPANCIES.

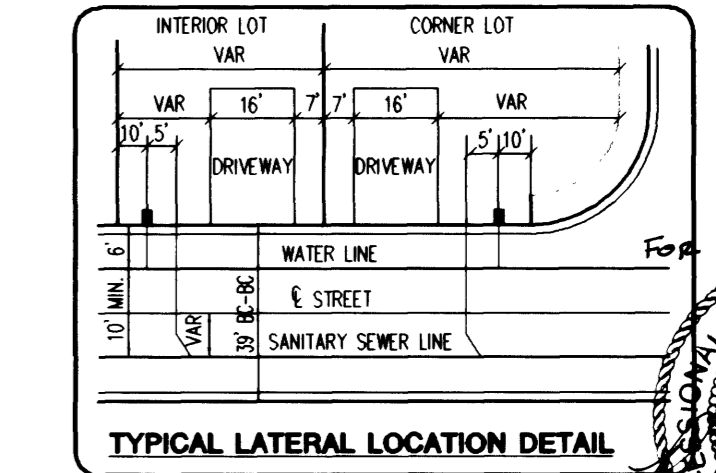
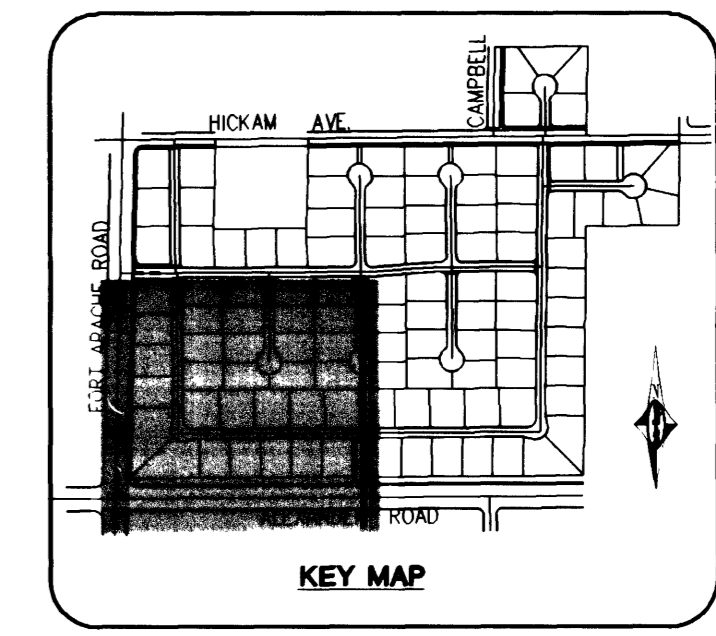
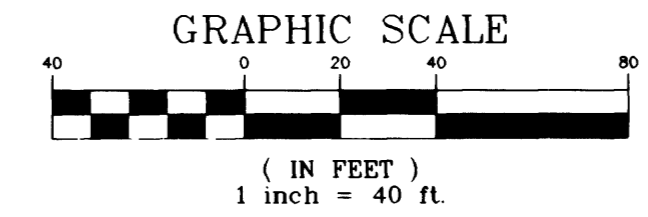
Avoid cutting underground utility lines. If's costly.  
**Call before you Dig**  
 1-800-227-2600  
 UNDERGROUND SERVICE (USA)

Avoid overhead power line contact.  
**Call before you Overhead**  
 1-702-593-6111  
 NEVADA POWER DISTRIBUTION AND SAFETY SERVICES DEPARTMENT

**LEGAL DESCRIPTION**  
 A PORTION OF THE SOUTHWEST QUARTER (SW ¼) OF SECTION 5, TOWNSHIP 20 SOUTH, RANGE 60 EAST, M.D.M., CLARK COUNTY, NEVADA.  
**BENCHMARK**  
 CLARK COUNTY BENCHMARK NO. 33, STATION 1000 55W/6E, RIVET AND SQUARE PLATE IN A CONCRETE MONUMENT, 30 FT. SOUTH AND 50 FT. EAST OF FORT APACHE RD. AND HICKAM AVE.  
 ELEVATION = 762.860 METERS OR 2502.82 FEET (NAVD 1988).

**BASIS OF BEARINGS**  
 NORTH 89°41'25" EAST - BEING THE SOUTH LINE OF THE SOUTHWEST QUARTER (SW ¼) OF SECTION 5, TOWNSHIP 20 SOUTH, RANGE 60 EAST, M.D.M., CLARK COUNTY, NEVADA, ALSO BEING THE CENTERLINE OF ALEXANDER ROAD AS SHOWN ON THAT CERTAIN MAP ON FILE IN THE OFFICE OF THE COUNTY RECORDER, CLARK COUNTY, NEVADA, IN FILE 87 OF SURVEYS, PAGE 84.  
**SEWERAGE CONTRIBUTION RATE**  
 AVERAGE DAILY FLOW (108x250 GPD) = 0.0270 MGD  
 PEAK FLOW (PF=3.5) = 0.0945 MGD

**BUILDING INFORMATION**  
 TYPE OF CONSTRUCTION: TYPE V-NR  
 TOTAL SQUARE FOOTAGE: <3,600 SQ. FT.  
 NUMBER OF STORES: 2 STORY  
 BUILDING USE: RESIDENTIAL  
 SPRINKLERED: NON-SPRINKLERED  
 FIRE FLOW: 1500 GPM @ 2.0 PSI



- WATER CONSTRUCTION NOTES**
- 1) FIRE HYDRANT ASSEMBLY PER UDACS PLATE 7 (INCLUDES TEE AND GATE VALVE)
  - 2) INSTALL 6" CAP & 2" BLOW OFF ASSEMBLY PER UDACS PLATE 4
  - 3) 8" x 8" TEE PER UDACS PLATE 5
  - 4) 8" GATE VALVE
  - 5) 8" x 6" REDUCER
  - 6) 8" 45° BEND PER UDACS PLATE 5
  - 7) 22-1/2" BEND PER UDACS PLATE 5
  - 8) 8" - 11-1/4" BEND PER UDACS PLATE 5
  - 9) 1" WATER SERVICE WITH 3/4" METER PER UDACS PLATE NO. 1D
  - 10) IRRIGATION & POWER CONDUIT 2-4" & 1-6" SCH. 40 PVC CONDUIT
  - 11) 1" WATER SERVICE WITH 1" METER & 1" PIPES PER UDACS PLATES 1D AND 11A
  - 12) 1" WATER SERVICE WITH 1" METER PER UDACS PLATE 1D.

- SIGNAGE NOTES**
- 1) INSTALL 2-12" D3 STREET NAME SIGNS & 1-36" R1-1 STOP SIGN
  - 2) INSTALL 2-9" D3 STREET NAME SIGNS & 1-30" R1-1 STOP SIGN
  - 3) INSTALL 2-9" D3 STREET NAME SIGNS
  - 4) INSTALL 1-RB-3A "NO PARKING" SIGN
  - 5) INSTALL 1-24"x30" R2-1 "35 MPH" SIGN
  - 6) INSTALL 1-30"x30" R3-7R "RIGHT LANE MUST TURN RIGHT" SIGN

- STRIPING NOTES**
- 1) INSTALL TYPE 1 CENTERLINE PER CC STD DWG 244
  - 2) INSTALL TYPE 2 CENTERLINE PER CC STD DWG 244
  - 3) INSTALL ADDED TURN LANE PER CC STD DWG 246
  - 4) INSTALL 8" WHITE EDGE LINE 1' FROM EDGE OF PAVEMENT
  - 5) INSTALL TYPE 5 LANE LINE PER CC STD DWG 244A
  - 6) INSTALL FORCED TURN LANE PER CC STD DWG 246A

- STREETLIGHTING NOTES**
- 1) INSTALL 3" INTERCONNECT CONDUIT W/ 1-18 WIRE CONDUITS TO HAVE 45' ROAD BENDS INTO NO. 7 PULLBOXES/PULLBORES TO HAVE 500' MAX SPACING.
  - 2) INSTALL 2" STREETLIGHT CONDUIT
  - 3) INSTALL 200 AMP SERVICE
  - 4) INSTALL NO. 3-1/2" PULL BOX FOR FUTURE 125 AMP SERVICE
  - 5) INSTALL NO. 3-1/2" PULL BOX
  - 6) SUB AND CAP (3) 3" CONDUITS FOR TRAFFIC AND (1) 3" CONDUIT OF INTERCONNECT
  - 7) SUB AND CAP 3" INTERCONNECT CONDUIT 5' BEYOND IMPROVEMENTS
  - 8) SUB AND CAP 1-1/4" STREETLIGHT CONDUIT 5' BEYOND IMPROVEMENTS.

**BACKWATER VALVES** (BWV)  
 THE FOLLOWING LOTS REQUIRE SEWER BACKWATER VALVES: 1, 8, 9, 12, 14, 15, 16, 17, 18, 20, 22, 23, 60, 67, 73, 74, 75, 76, 81, 82, 83, 84, 89, 90, 91, 92, 98, 99, 100, 101, 103, 104, 106, 111, 112, 113, 114, 115, 116, 117.

**SEWER CONNECTION NOTE**  
 ONE OR MORE SEGMENTS OF THE DOWNSTREAM SEWER SYSTEM THAT WILL SERVE THIS PROJECT HAS NOT BEEN COMPLETED AND/OR ACCEPTED FOR MAINTENANCE BY THE CITY OF LAS VEGAS. ANY WORK DONE ON THIS PROJECT PRIOR TO THE COMPLETION AND/OR ACCEPTANCE OF THE DOWNSTREAM SEWER SYSTEM(S) SHALL BE DONE AT THE DEVELOPER'S OWN RISK. THE CITY OF LAS VEGAS RESERVES THE RIGHT TO PREVENT THE PHYSICAL CONNECTION OF THIS PROJECT INTO THE DOWNSTREAM SEWER SYSTEM UNTIL ALL SEGMENTS HAVE BEEN COMPLETED AND ACCEPTED FOR MAINTENANCE, OR UNTIL SUCH TIME AS THEY ARE DEEMED AVAILABLE FOR SERVICE.

**REDUCED PRESSURE PRINCIPLE ASSEMBLY (RPP)**  
 APPROVED REDUCED PRESSURE PRINCIPLE ASSEMBLY(S) SHALL BE INSTALLED PER THE UDACS PLATE NO. 11A. NO WATER SHALL BE TAKEN FROM A SERVICE REQUIRING BACKFLOW PREVENTION UNTIL THE REDUCED PRESSURE PRINCIPLE ASSEMBLY HAS BEEN SUCCESSFULLY TESTED BY THE LWWD.

ANY BLOCK WALL OR OTHER FENCE MATERIAL SHALL BE DESIGNED AND CONSTRUCTED AROUND THE OUTSIDE OF THE EASEMENT(S) TO ALLOW THE DISTRICT DIRECT ACCESS FROM THE ADJACENT RIGHT-OF-WAY.

- 200 AMP 240V PAD MOUNT SERVICE POINT WITH:
- 2. 2 POLE 60 AMP CIRCUIT BREAKER/S
  - 1. 1 POLE 15 AMP CIRCUIT BREAKER/S
  - 1. 1 POLE 40 AMP CIRCUIT BREAKER/S
  - 1. 1 POLE 60 AMP CIRCUIT BREAKER/S
  - 2. 2 POLE 60 AMP CONTACTOR/S
  - 1. BY-PASS SWITCH PER CONTACTOR
- SERVICE POINT LOCATION**  
 ON THE NORTHEAST CORNER OF THE INT. OF ALEXANDER/FT. APACHE

**PRIVATE STREET NOTE:**  
 PRIVATE STREETS ARE PAVED, CIVIL PUBLIC SEWER EASEMENTS AND PUBLIC DRAINAGE EASEMENT TO BE PRIVATELY MAINTAINED.

**APPROVALS**  
 CLV DRAWING NO. 13072  
 DATE 1/30/02  
 CLV DRAWING NO. 23072  
 DATE 2/20/02  
 LAS VEGAS VALLEY WATER DISTRICT

**KBHOME**  
 6655 Bermuda Road  
 Las Vegas, NV 89119  
 (702) 938-5400 Fax (702) 938-5454

**Carter-Burgess**  
 Consultants in Planning, Engineering,  
 Construction Management, and Related Services

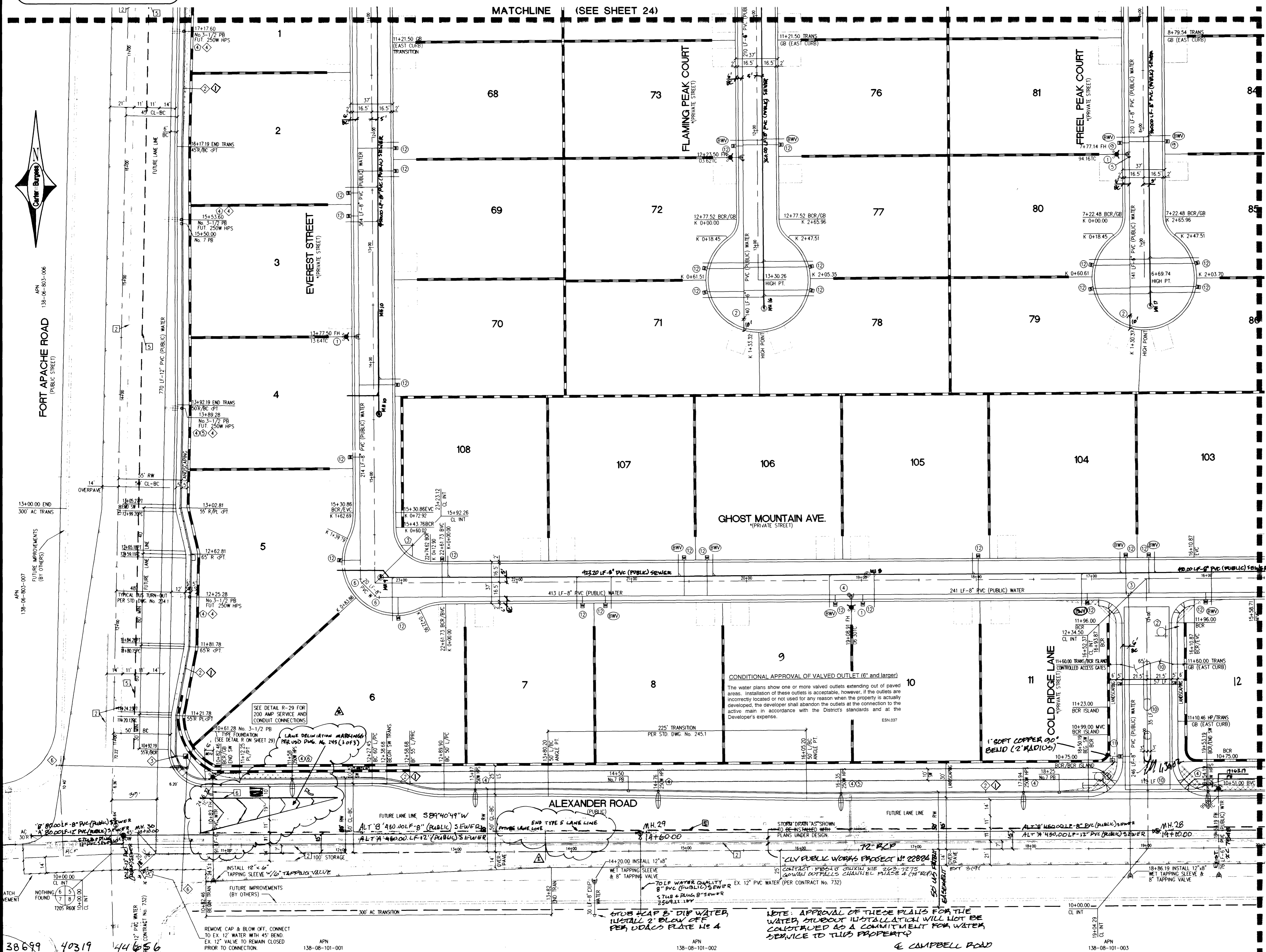
APN 138-08-101-002  
 1/30/02  
 1/30/02  
 1/30/02

**UTILITY, STREETLIGHTING, STRIPING, AND SIGNAGE PLAN**

**LONE MOUNTAIN CLASSICS**

DRAWN BY: DOC  
 DESIGNED BY: MSW  
 CHECKED BY: MSW  
 PROJECT NO: 2-40317  
 SCALE: 1"=40'  
 HORIZ. VERT.  
 SHEET 23 OF 29 SHEETS  
 CLV DRAWING NO. 3074-4607

WILLIAM S. WONDERS  
 CIVIL ENGINEER  
 No. 13397



**CONDITIONAL APPROVAL OF VALVED OUTLET (6" and larger)**  
 The water plans show one or more valved outlets extending out of paved areas. Installation of these outlets is acceptable, however, if the outlets are incorrectly located or not used for any reason when the property is actually developed, the developer shall abandon the outlets at the connection to the active main in accordance with the District's standards and at the Developer's expense.

**NOTE: APPROVAL OF THESE PLANS FOR THE WATER, WITHOUT INSTALLATION, WILL NOT BE CONSIDERED AS A COMMITMENT FOR WATER SERVICE TO THIS PROPERTY**