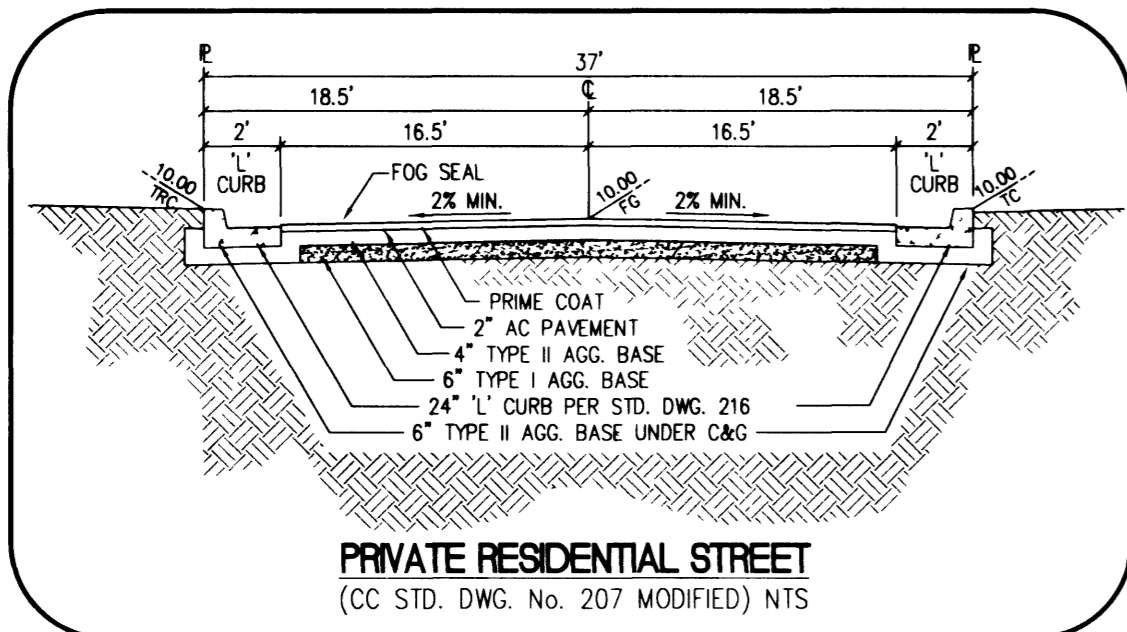


DISCLAIMER NOTE:
 UTILITY LOCATIONS SHOWN HEREON ARE APPROXIMATE ONLY. IT SHALL BE THE CONTRACTOR'S RESPONSIBILITY TO DETERMINE THE EXACT HORIZONTAL AND VERTICAL LOCATION OF ALL EXISTING UNDERGROUND OR OVERHEAD UTILITIES PRIOR TO COMMENCING CONSTRUCTION. NO REPRESENTATION IS MADE THAT ALL EXISTING UTILITIES ARE SHOWN HEREON. THE ENGINEER ASSUMES NO RESPONSIBILITY FOR UTILITIES NOT SHOWN OR UTILITIES NOT SHOWN IN THEIR PROPER LOCATION.
 CONTRACTOR TO NOTIFY ENGINEER OF ANY CHANGES OR DISCREPANCIES.

Avoid cutting underground utility lines. It's costly.
 Call before you Dig
 1-800-227-2600
 UNDERGROUND SERVICE (USA)

Avoid overhead power line contact.
 Call before you Overhead
 1-702-593-6111
 NEVADA POWER EQUIPMENT AND SAFETY SERVICES DEPARTMENT



PRIVATE RESIDENTIAL STREET
 (CC STD. DWG. No. 207 MODIFIED) NTS

PRIVATE STREET NOTE:

PRIVATE STREETS ARE P.U.E.'S, CLV PUBLIC SEWER EASEMENTS, AND PUBLIC DRAINAGE EASEMENT TO BE PRIVATELY MAINTAINED.

LEGAL DESCRIPTION

A PORTION OF THE SOUTHWEST QUARTER (SW ¼) OF SECTION 5, TOWNSHIP 20 SOUTH, RANGE 60 EAST, M.D.M., CLARK COUNTY, NEVADA.

BASIS OF BEARING

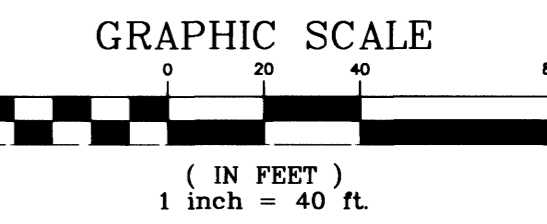
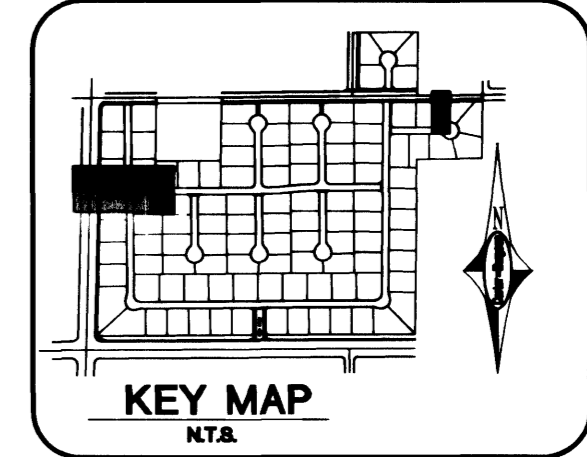
NORTH 89°41'28" EAST - BEING THE SOUTH LINE OF THE SOUTHWEST QUARTER (SE ¼) OF THE SOUTHWEST QUARTER (SW ¼) OF SECTION 5, TOWNSHIP 20 SOUTH, RANGE 60 EAST, M.D.M., CLARK COUNTY, NEVADA, ALSO BEING THE CENTERLINE OF ALEXANDER ROAD AS SHOWN BU THAT CERTAIN MAP ON FILE IN THE OFFICE OF THE COUNTY RECORDER, CLARK COUNTY, NEVADA, IN FILE 87 OF SURVEYS, PAGE 84.

BENCHMARK

CLARK COUNTY BENCHMARK NO. 33, STATION 1000 55MM, RIVET AND SQUARE PLATE IN A CONCRETE MONUMENT, 30 FT. SOUTH AND 50 FT. EAST OF FORT APACHE RD. AND HICKAM AVE.
 ELEVATION = 762.860 METERS OR 2502.82 FEET (NAVD 1988).

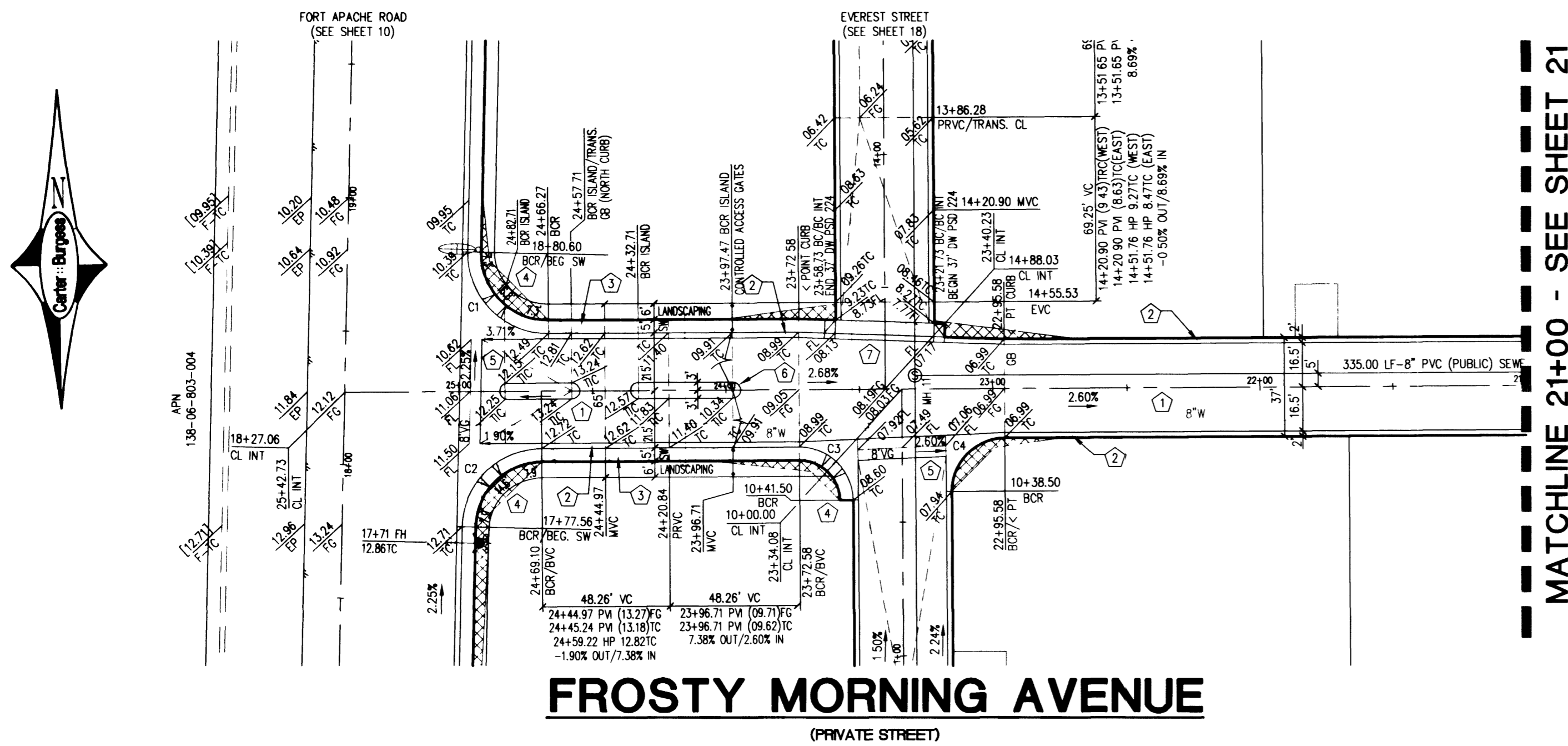
CONSTRUCTION NOTES

- CONSTRUCT ROADWAY IMPROVEMENTS PER DETAIL ON SHEET 28.
- CONSTRUCT 24" "L" TYPE CURB PER CC STD DWG 216.
- CONSTRUCT 4" SIDEWALK PER CC STD DWG 234.
- CONSTRUCT SIDEWALK RAMP PER CC STD DWG 235, CASE 1.
- CONSTRUCT 8" VALLEY GUTTER PER CC STD DWG 228.
- CONSTRUCT "A" TYPE CURB PER CC STD DWG 219.
- CONSTRUCT DRIVEWAY PER CC STD DWG 224.
- CONSTRUCT SIDEWALK UNDERDRAIN PER CC STD DWG 236.



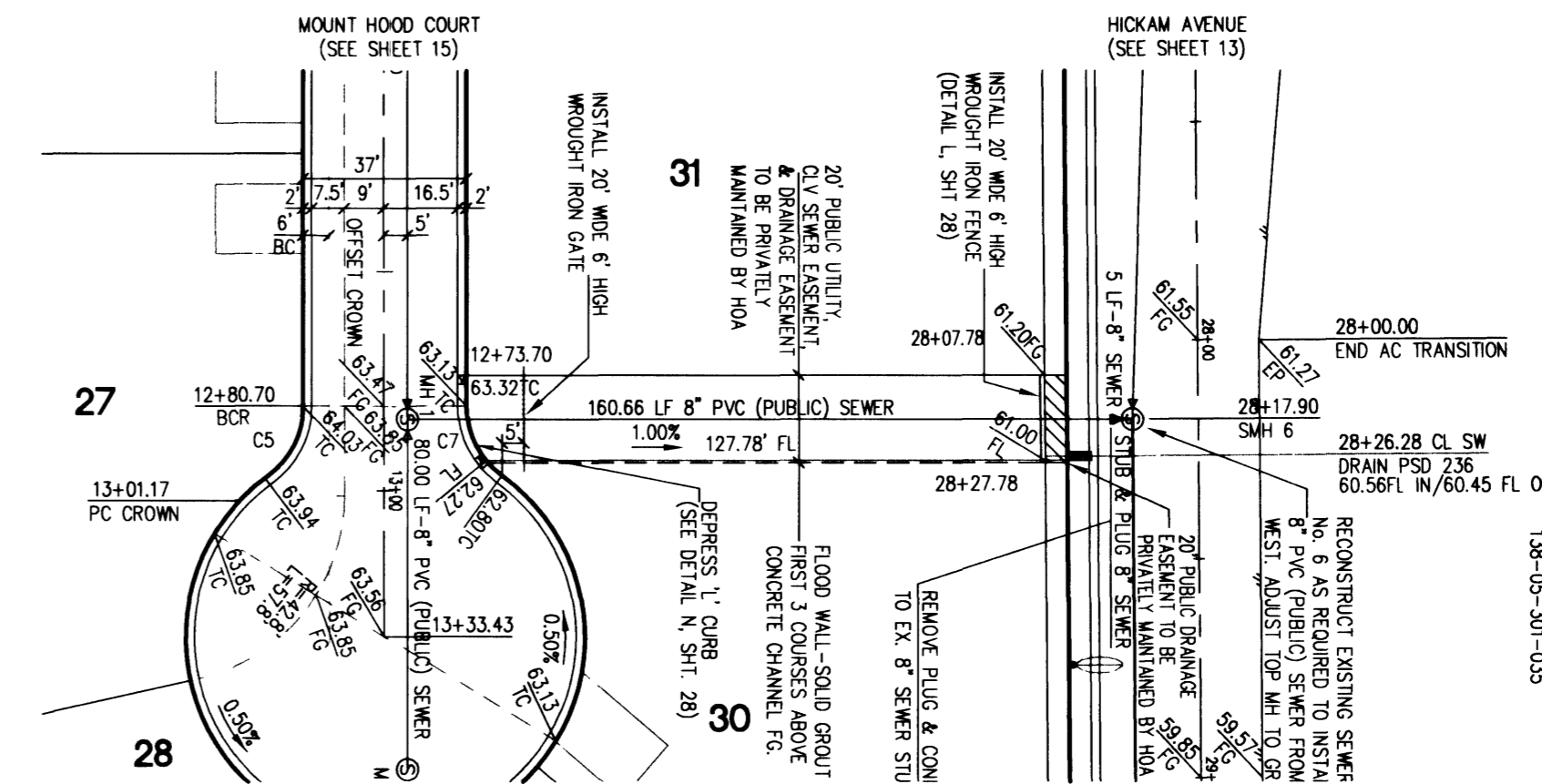
BACK OF CURB CURVE TABLE

CURVE	RADIUS	LENGTH	TANGENT	DELTA	CASE 1 SIDEWALK RAMP PER CC STD DWG 235	
					"A"	"B"
C1	30.00'	47.93'	30.82'	91°32'40"	4.5'	15.0'
C2	30.00'	46.32'	29.20'	88°27'20"	8.0'	8.0'
C3	20.00'	31.42'	20.00'	90°00'00"	8.0'	8.0'
C4	20.00'	31.42'	20.00'	90°00'00"	8.0'	8.0'
C5	19.50'	18.45'	9.98'	54°13'27"		
C6	45.50'	228.08'	132.79'	288°55'54"		
C7	19.50'	18.45'	9.98'	54°13'27"		



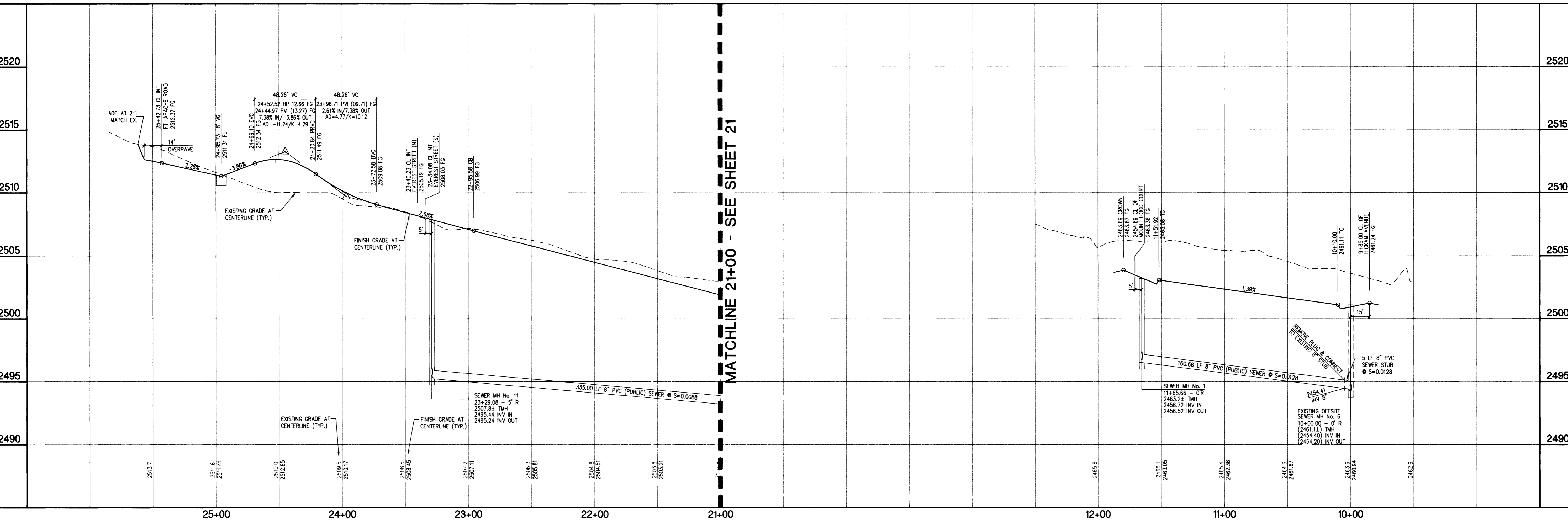
FROSTY MORNING AVENUE
 (PRIVATE STREET)

MATCHLINE 21+00 - SEE SHEET 21



SEWER OUTFALL

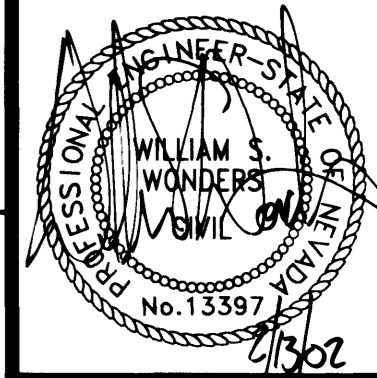
(PUBLIC UTILITY EASEMENT)
 (CLV SEWER EASEMENT)



MATCHLINE 21+00 - SEE SHEET 21

PLAN AND PROFILE - SEWER OUTFALL & FROSTY MORNING AVE
LONE MOUNTAIN CLASSICS

DRAWN BY: DOC
 DESIGNED BY: MSW
 CHECKED BY: MSW
 PROJECT NO: 240317
 SCALE: 1"=40' HORIZ, 1"=4' VERT.



SHEET 20
 20 OF 29 SHEETS
 CLV DRAWING NO. 307Y-4687

KBHOME
Carter Burgess
 Consultants in Planning, Engineering, Construction Management, and Related Services
 6655 Bermuda Road
 Las Vegas, NV 89119
 (702) 938-5400 Fax (702) 938-5454

L:\240317\Design\mpro\0317-20P.dwg