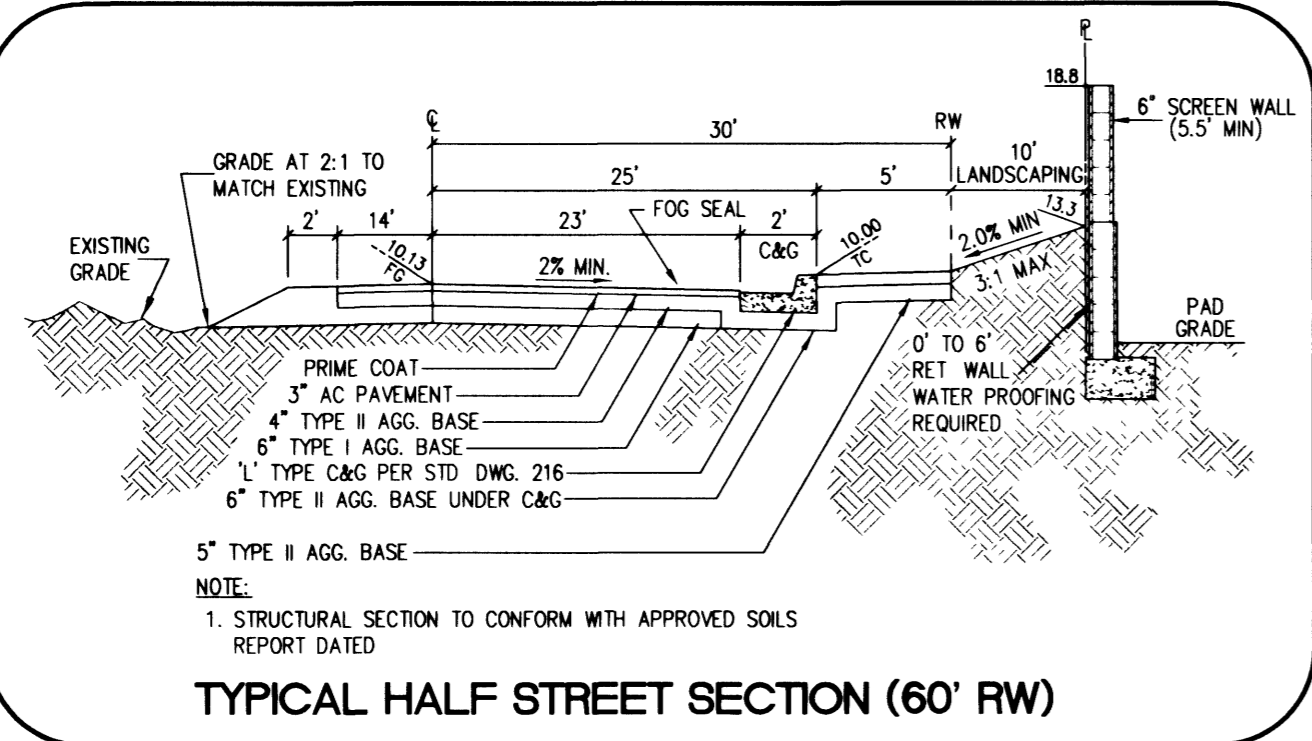


**DISCLAIMER NOTE:**

UTILITY LOCATIONS SHOWN HEREON ARE APPROXIMATE ONLY. IT SHALL BE THE CONTRACTOR'S RESPONSIBILITY TO DETERMINE THE EXACT HORIZONTAL AND VERTICAL LOCATION OF ALL EXISTING UNDERGROUND OR OVERHEAD UTILITIES PRIOR TO COMMENCING CONSTRUCTION. NO REPRESENTATION IS MADE THAT ALL EXISTING UTILITIES ARE SHOWN HEREON. THE ENGINEER ASSUMES NO RESPONSIBILITY FOR UTILITIES NOT SHOWN OR UTILITIES NOT SHOWN IN THEIR PROPER LOCATION. CONTRACTOR TO NOTIFY ENGINEER OF ANY CHANGES OR DISCREPANCIES.

Avoid cutting underground utility lines. It's costly. Call before you Dig 1-800-227-2600 UNDERGROUND SERVICE (USA)

Avoid overhead power line contact. Call before you Overhead 1-702-593-6111 NEVADA POWER DEPARTMENT AND SAFETY SERVICES DEPARTMENT



**LEGAL DESCRIPTION**

A PORTION OF THE SOUTHWEST QUARTER (SW ¼) OF SECTION 5, TOWNSHIP 20 SOUTH, RANGE 60 EAST, M.D.M., CLARK COUNTY, NEVADA.

**BASIS OF BEARING**

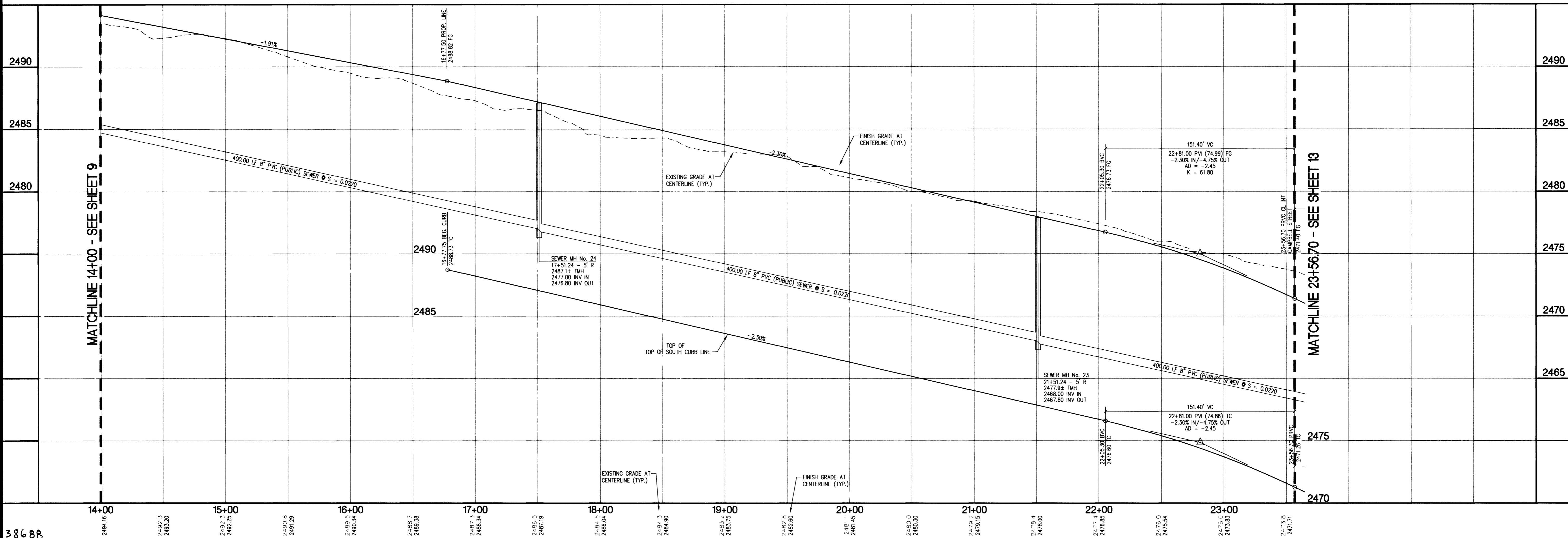
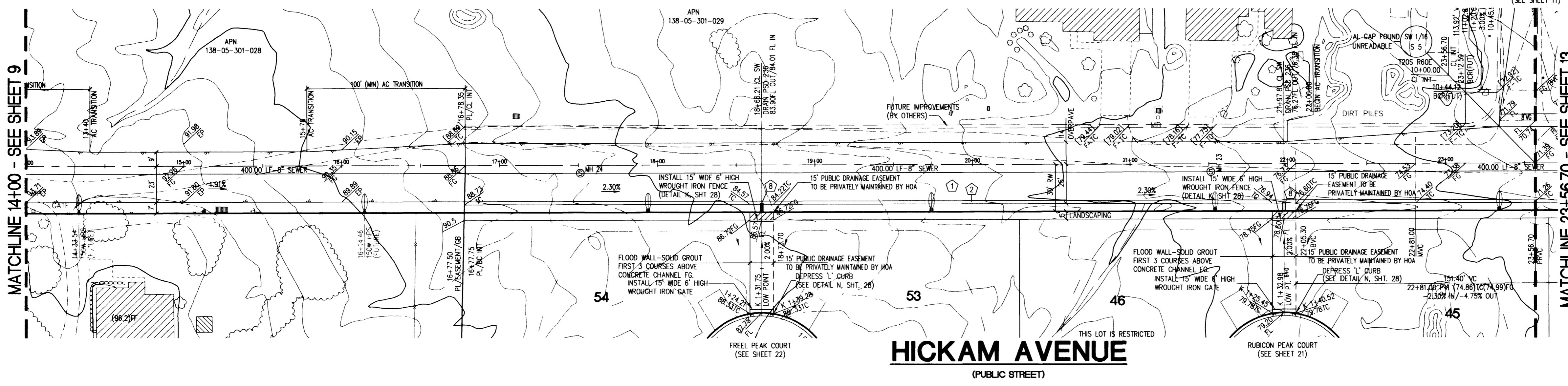
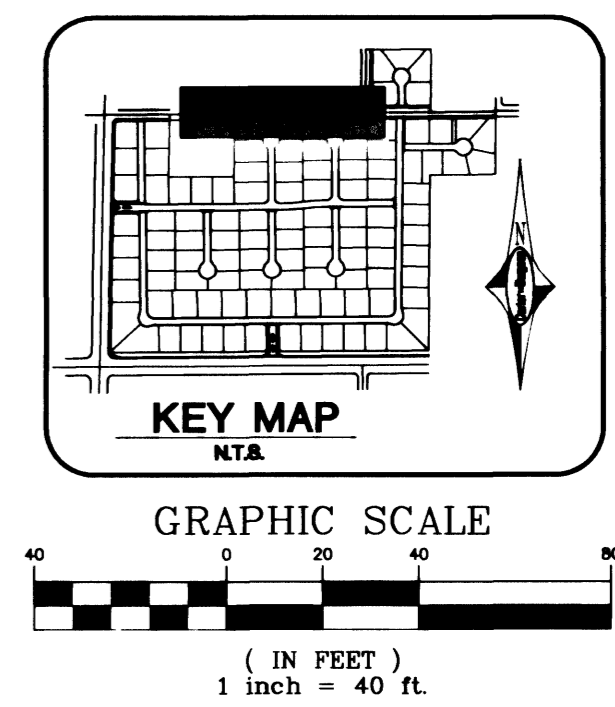
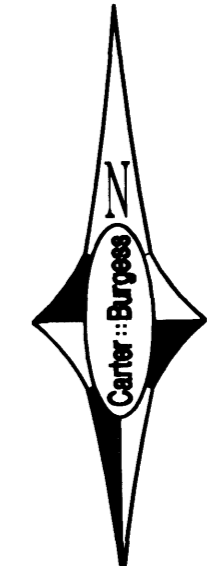
NORTH 89°41'26\"/>

**BENCHMARK**

CLARK COUNTY BENCHMARK NO. 33, STATION 1000 SSWMS, RIVET AND SQUARE PLATE IN A CONCRETE MONUMENT, 30 FT. SOUTH AND 50 FT. EAST OF FORT APACHE RD. AND HICKAM AVE. ELEVATION = 762.860 METERS OR 2502.82 FEET (NAVD 1988).

**CONSTRUCTION NOTES**

1. CONSTRUCT ROADWAY IMPROVEMENTS PER DETAIL ON SHEET 28.
2. CONSTRUCT 24\"/>



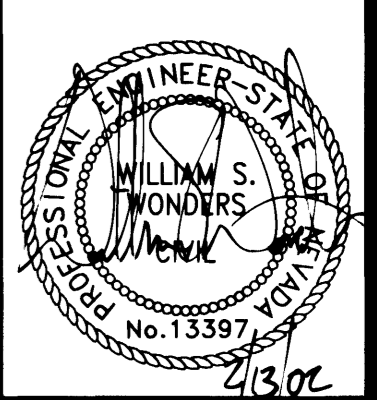
| NO. | DATE | APP'D BY | REVISION |
|-----|------|----------|----------|
|     |      |          |          |

**KBHOME**

**Carter-Burgess**  
 Consultants in Planning, Engineering, Construction Management, and Related Services  
 6655 Bermuda Road  
 Las Vegas, NV 89119  
 (702) 938-5400 Fax (702) 938-5454

PLAN AND PROFILE  
 HICKAM AVENUE  
 LONE MOUNTAIN CLASSICS

DRAWN BY: DOC  
 DESIGNED BY:  
 CHECKED BY: MSW  
 PROJECT NO: 240317  
 SCALE: 1" = 40' HORIZ. 1" = 4' VERT.



SHEET 12 OF 29 SHEETS  
 CLV DRAWING NO. 307Y-4687