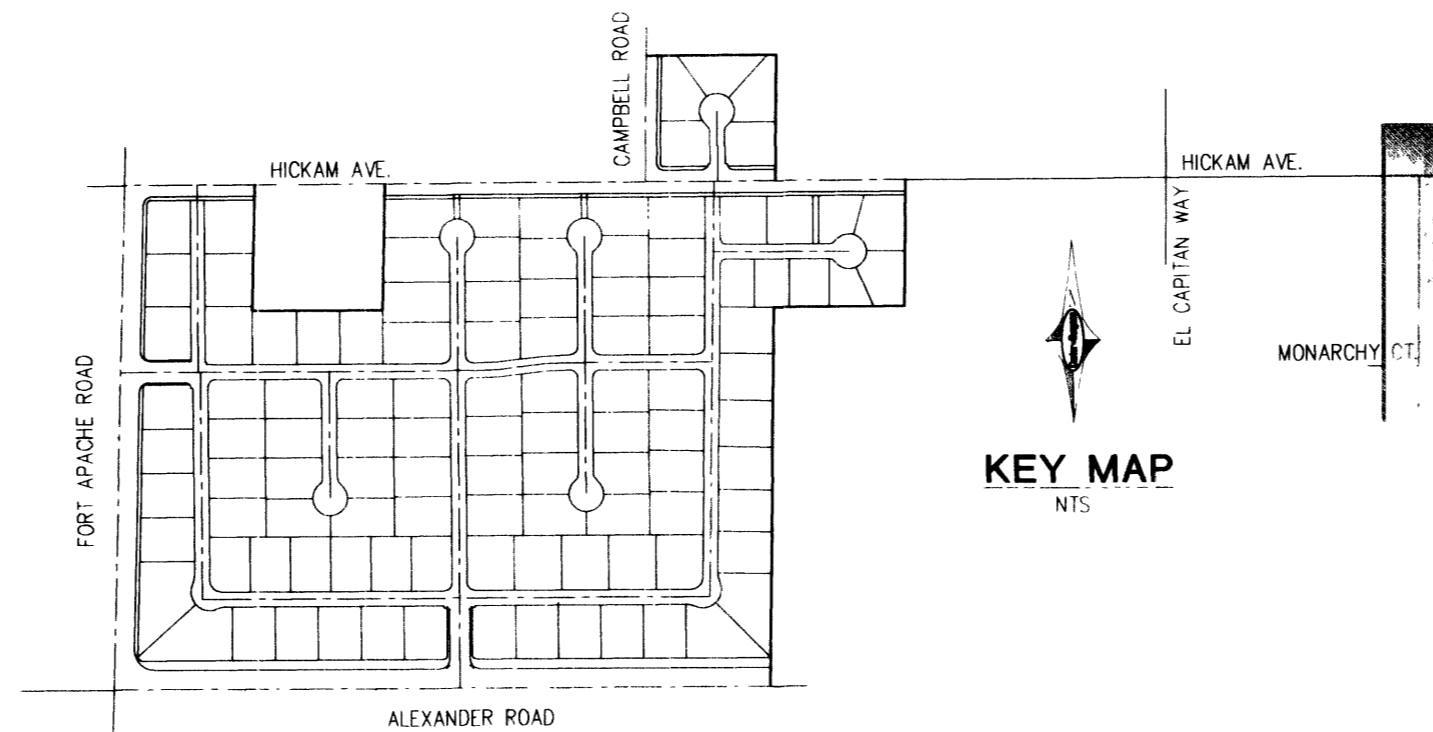


DISCLAIMER NOTE:
 UTILITY LOCATIONS SHOWN HEREON ARE APPROXIMATE ONLY. IT SHALL BE THE CONTRACTOR'S RESPONSIBILITY TO DETERMINE THE EXACT HORIZONTAL AND VERTICAL LOCATION OF ALL EXISTING UNDERGROUND OR OVERHEAD UTILITIES PRIOR TO COMMENCING CONSTRUCTION. NO REPRESENTATION IS MADE THAT ALL EXISTING UTILITIES ARE SHOWN HEREON. THE ENGINEER ASSUMES NO RESPONSIBILITY FOR UTILITIES NOT SHOWN OR UTILITIES NOT SHOWN IN THEIR PROPER LOCATION. CONTRACTOR TO NOTIFY ENGINEER OF ANY CHANGES OR DISCREPANCIES.

Avoid cutting underground utility lines. It's costly.
Call before you Dig
 1-800-227-2600
 UNDERGROUND SERVICE (USA)

Avoid overhead power line contact.
Call before you Overhead
 1-702-593-6111
 NEVADA POWER ENVIRONMENT AND SAFETY SERVICES DEPARTMENT



LEGAL DESCRIPTION

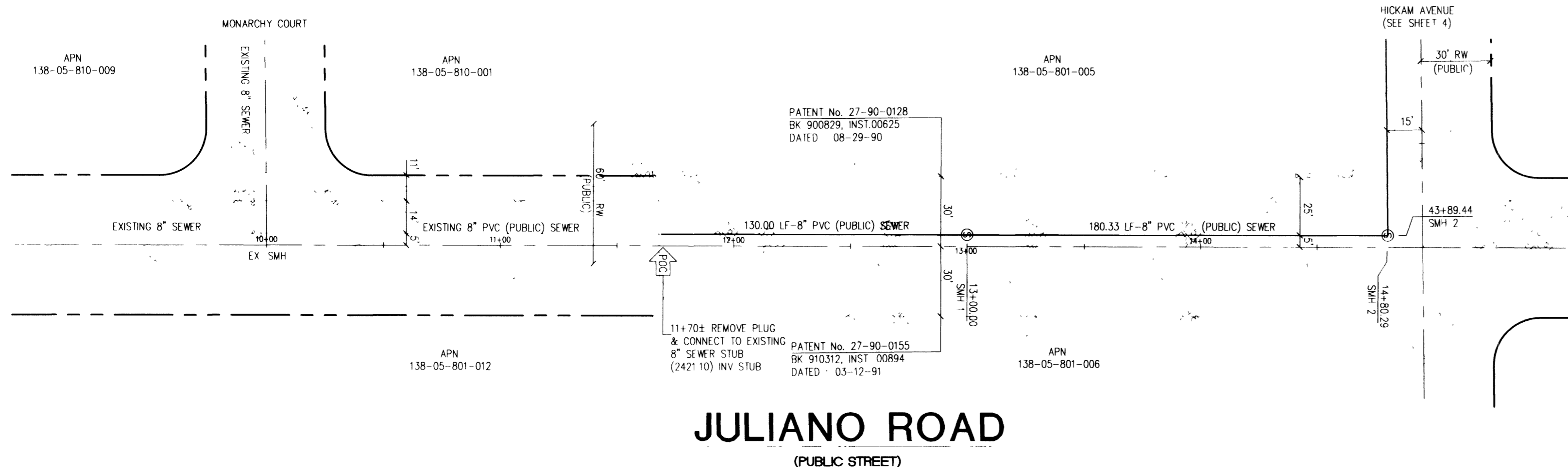
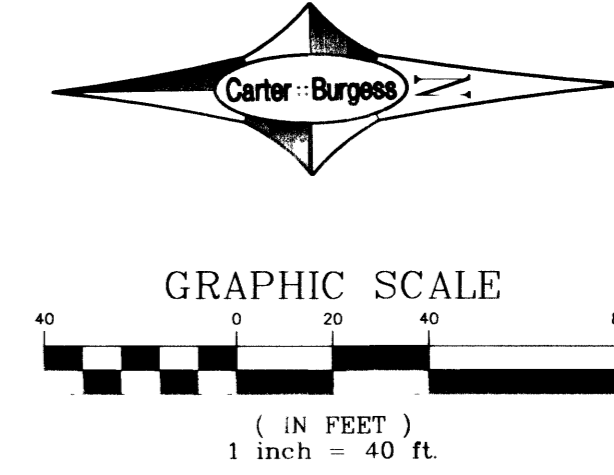
A PORTION OF THE SOUTHWEST QUARTER (SW 1/4) OF SECTION 5, TOWNSHIP 20 SOUTH, RANGE 60 EAST, M.D.M., CLARK COUNTY, NEVADA

BENCHMARK

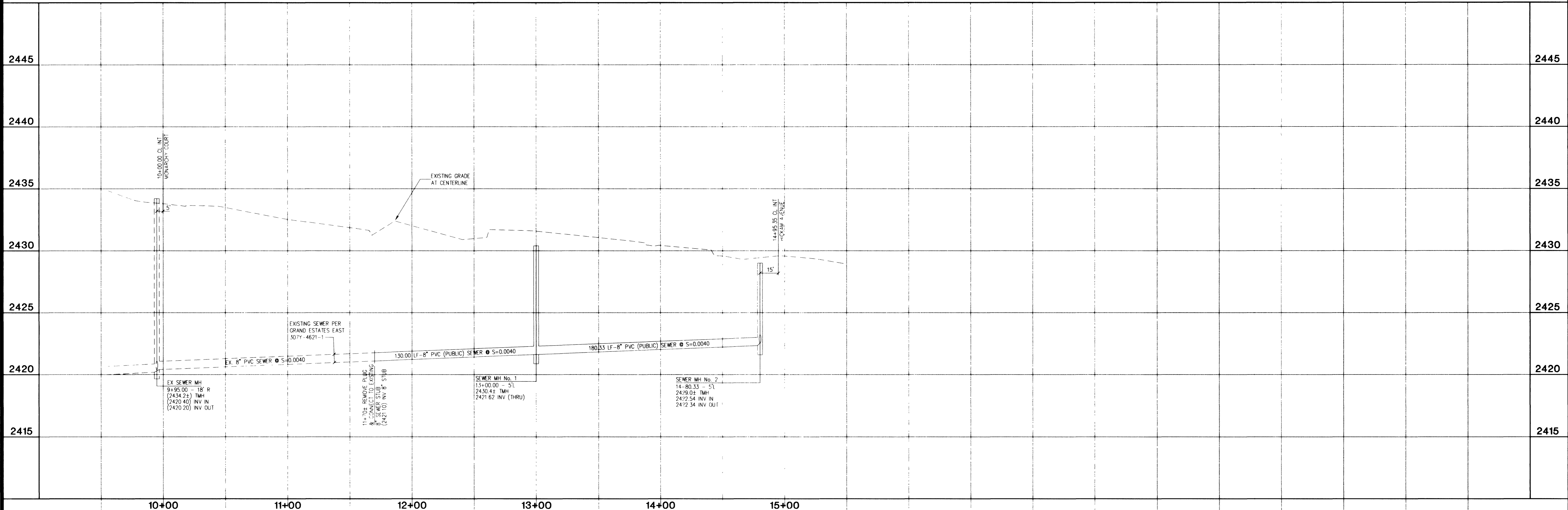
CLARK COUNTY BENCHMARK No. 33, STATION 1000 55MM6, RIVET AND SQUARE PLATE IN A CONCRETE MONUMENT, 30 FT SOUTH AND 50 FT EAST OF FORT APACHE RD AND HICKAM AVE. ELEVATION = 762.860 METERS OR 2502.82 FEET (NAVD 1988).

BASIS OF BEARINGS

NORTH 89°41'26" EAST - BEING THE SOUTH LINE OF THE SOUTHEAST QUARTER (SE 1/4) OF THE SOUTHWEST QUARTER (SW 1/4) OF SECTION 5, TOWNSHIP 20 SOUTH, RANGE 60 EAST, M.D.M., CLARK COUNTY, NEVADA, ALSO BEING THE CENTERLINE OF ALEXANDER ROAD AS SHOWN BY THAT CERTAIN MAP ON FILE IN THE OFFICE OF THE COUNTY RECORDER, CLARK COUNTY, NEVADA, IN FILE 87 OF SURVEYS, PAGE 84.



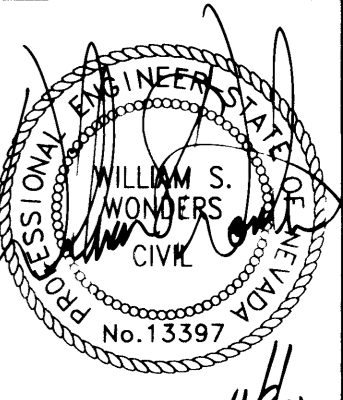
JULIANO ROAD
 (PUBLIC STREET)



PLAN AND PROFILE
 JULIANO ROAD

LONE MOUNTAIN CLASSICS
 BY KB HOME

DRAWN BY: JUL
 DESIGNED BY: JUL
 CHECKED BY: HSB
 PROJECT NO: 240317
 SCALE: 1" = 40' HORIZ
 1" = 4' VERT



SHEET
 5
 OF 5 SHEETS
 CLV DRAWING NO.
 3074-4607-05

Carter Burgess
 Consultants in Planning, Engineering,
 Construction Management, and Real Estate Services
 6655 Bermuda Road
 Las Vegas, NV 89119
 (702) 938-5400 Fax (702) 938-5454