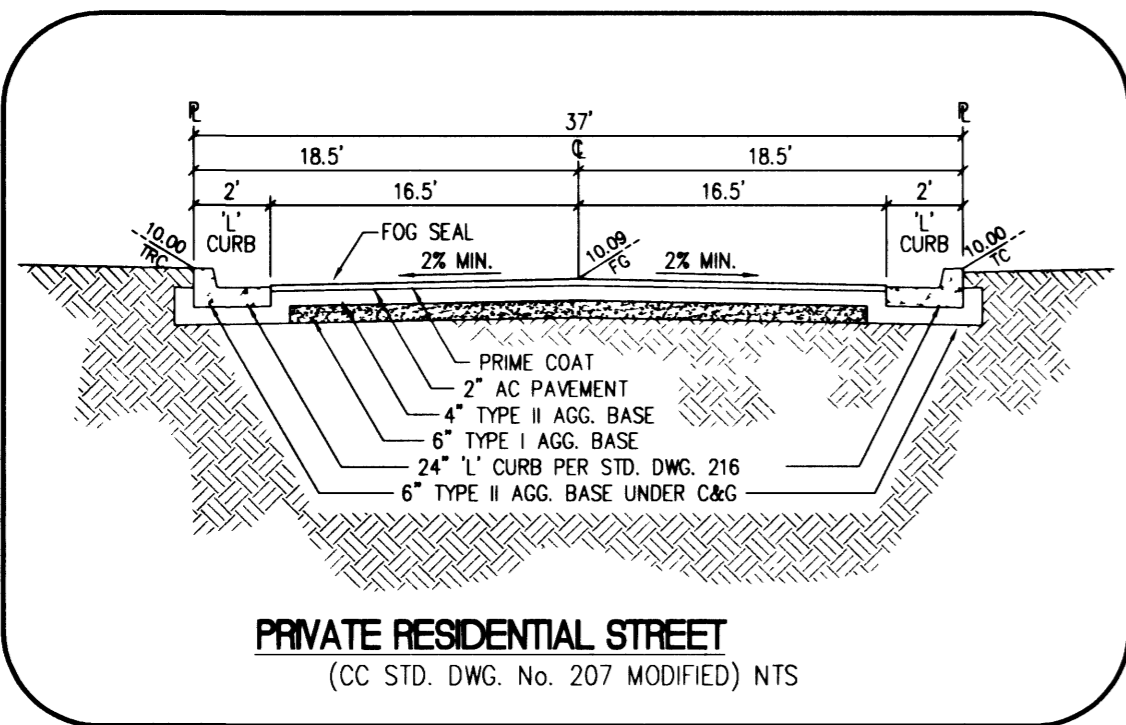


**DISCLAIMER NOTE:**

UTILITY LOCATIONS SHOWN HEREON ARE APPROXIMATE ONLY. IT SHALL BE THE CONTRACTOR'S RESPONSIBILITY TO DETERMINE THE EXACT HORIZONTAL AND VERTICAL LOCATION OF ALL EXISTING UNDERGROUND OR OVERHEAD UTILITIES PRIOR TO COMMENCING CONSTRUCTION. NO REPRESENTATION IS MADE THAT ALL EXISTING UTILITIES ARE SHOWN HEREON. THE ENGINEER ASSUMES NO RESPONSIBILITY FOR UTILITIES NOT SHOWN OR UTILITIES NOT SHOWN IN THEIR PROPER LOCATION. CONTRACTOR TO NOTIFY ENGINEER OF ANY CHANGES OR DISCREPANCIES.

Avoid cutting underground utility lines. It's costly.  
Call before you Dig  
1-800-227-2600  
UNDERGROUND SERVICE (USA)

Avoid overhead power line contact.  
Call before you Overhead  
1-702-593-6111  
UTILITY POWER COMPANY AND SAFTY SERVICES DEPARTMENT



PRIVATE RESIDENTIAL STREET  
(CC STD. DWG. No. 207 MODIFIED) NTS

**LEGAL DESCRIPTION**

A PORTION OF THE SOUTHWEST QUARTER (SW ¼) OF SECTION 5, TOWNSHIP 20 SOUTH, RANGE 60 EAST, M.D.M., CLARK COUNTY, NEVADA.

**BASIS OF BEARING**

NORTH 89°41'26\"/>

**BENCHMARK**

CLARK COUNTY BENCHMARK NO. 33, STATION 1000 S5W56, RIVET AND SQUARE PLATE IN A CONCRETE MONUMENT, 30 FT. SOUTH AND 50 FT. EAST OF FORT APACHE RD. AND HICKAM AVE. ELEVATION = 782.860 METERS OR 2502.82 FEET (NAVD 1988).

**PRIVATE STREET NOTE:**

PRIVATE STREETS ARE P.U.E.'S, CLV PUBLIC SEWER EASEMENTS, AND PUBLIC DRAINAGE EASEMENT TO BE PRIVATELY MAINTAINED.

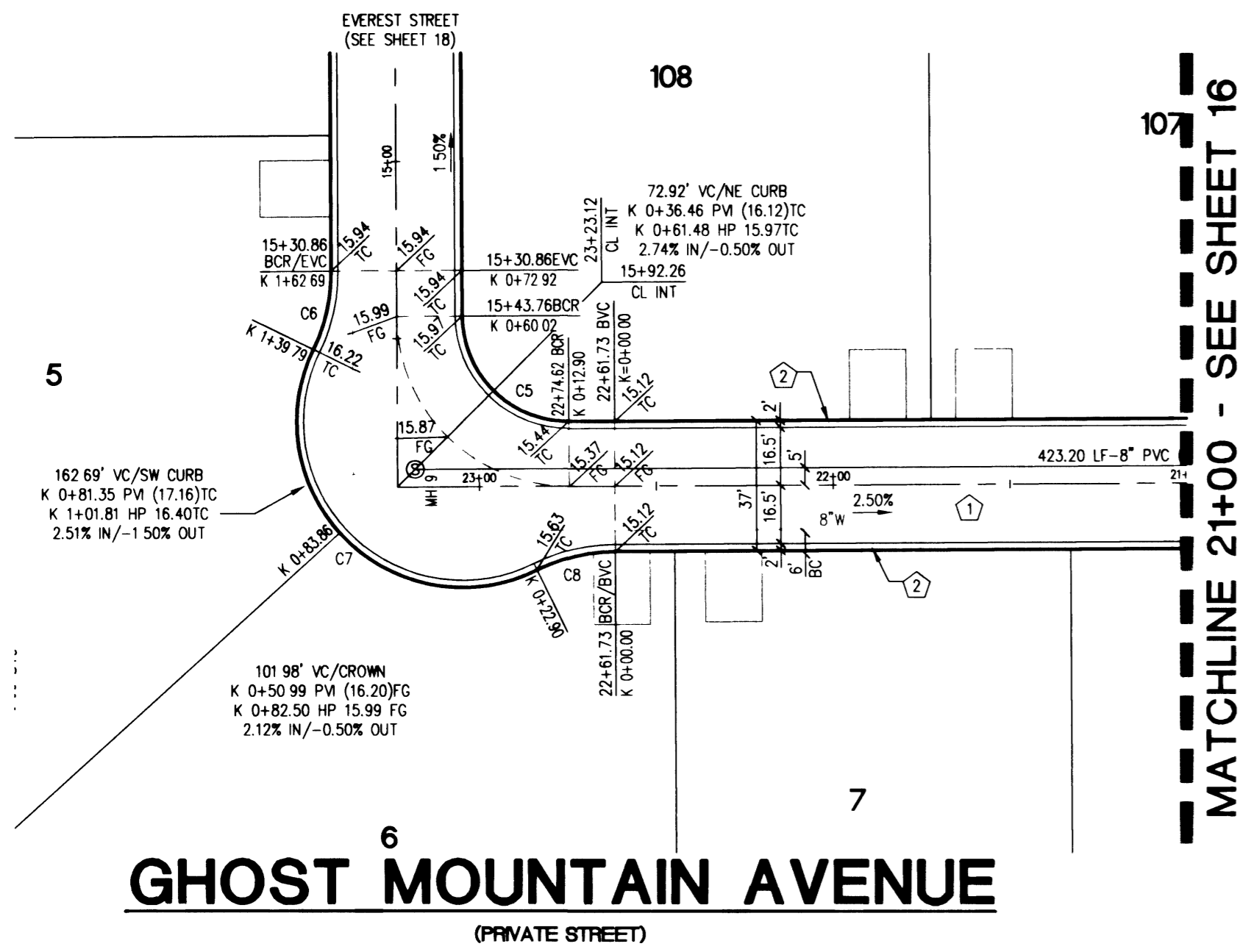
**CONSTRUCTION NOTES**

1. CONSTRUCT ROADWAY IMPROVEMENTS PER DETAIL ON SHEET 28.
2. CONSTRUCT 24\"/>

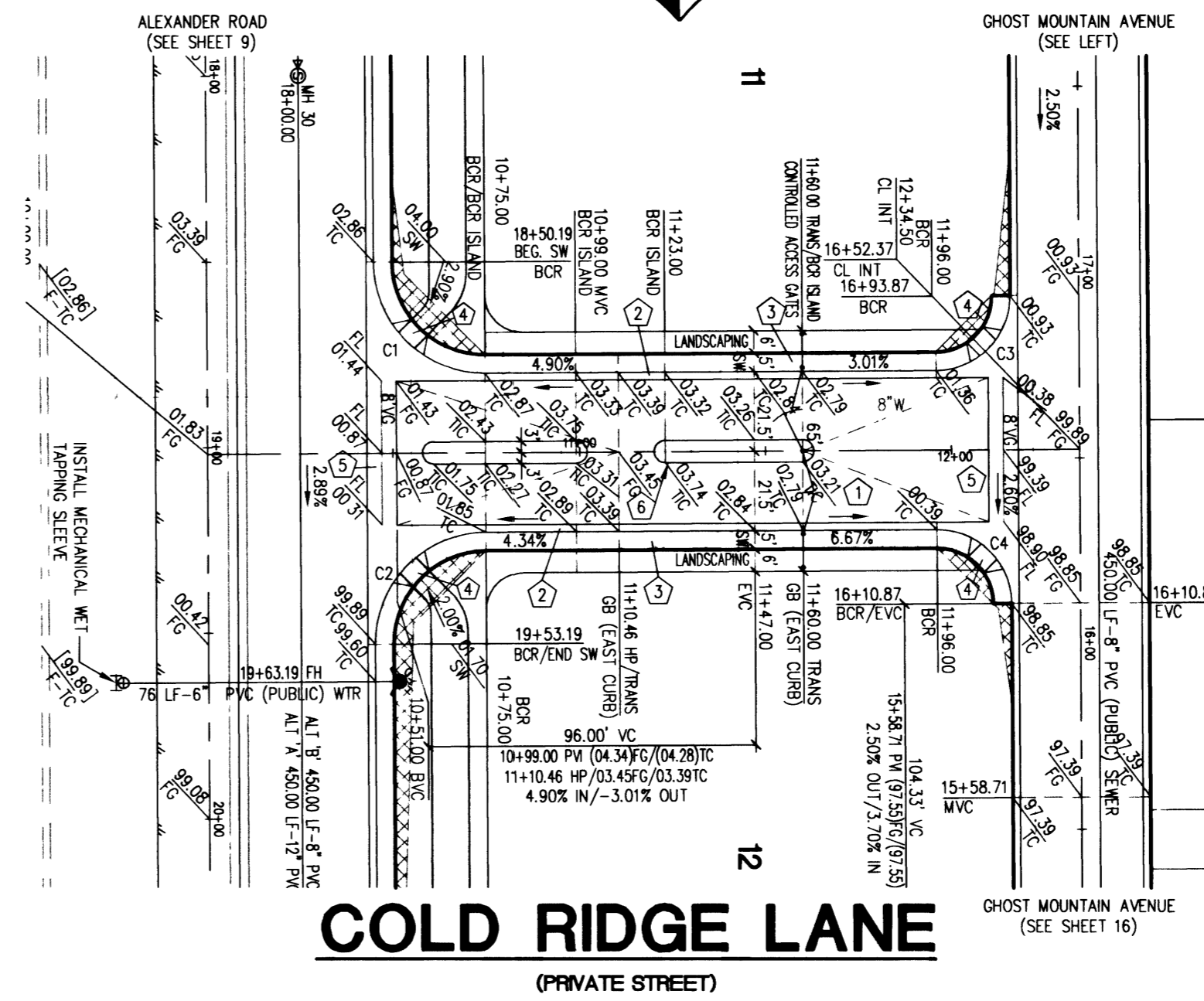
**BACK OF CURB CURVE TABLE**

CURVE	RADIUS	LENGTH	TANGENT	DELTA	"A"	"B"
C1	30.00'	47.12'	30.00'	90°00'00"	8.0'	8.0'
C2	30.00'	47.12'	30.00'	90°00'00"	15.0'	4.5'
C3	20.00'	31.42'	20.00'	90°00'00"	8.0'	8.0'
C4	20.00'	31.42'	20.00'	90°00'00"	4.5'	15.0'
C5	30.00'	47.12'	30.00'	90°00'00"		
C6	50.00'	22.90'	11.66'	26°14'44"		
C7	47.00'	116.89'	138.42'	142°29'28"		
C8	50.00'	22.90'	11.66'	26°14'44"		

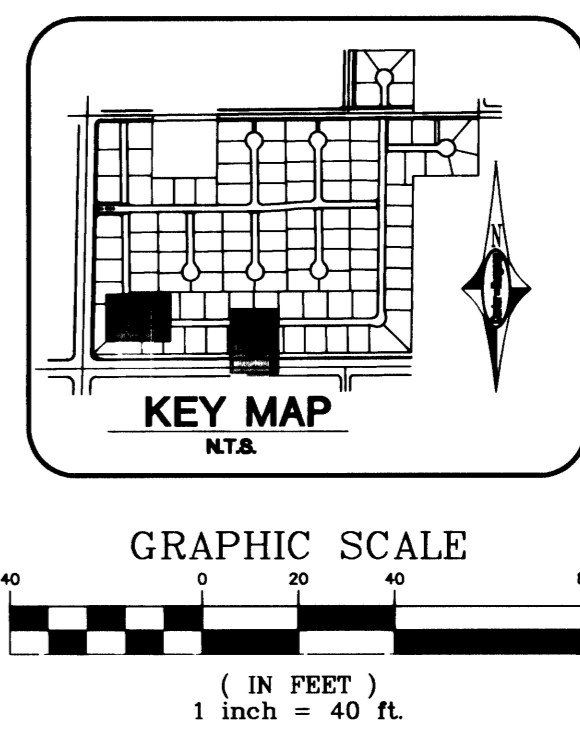
CASE 1 SIDEWALK RAMP PER CC STD DWG 235



**GHOST MOUNTAIN AVENUE**  
(PRIVATE STREET)

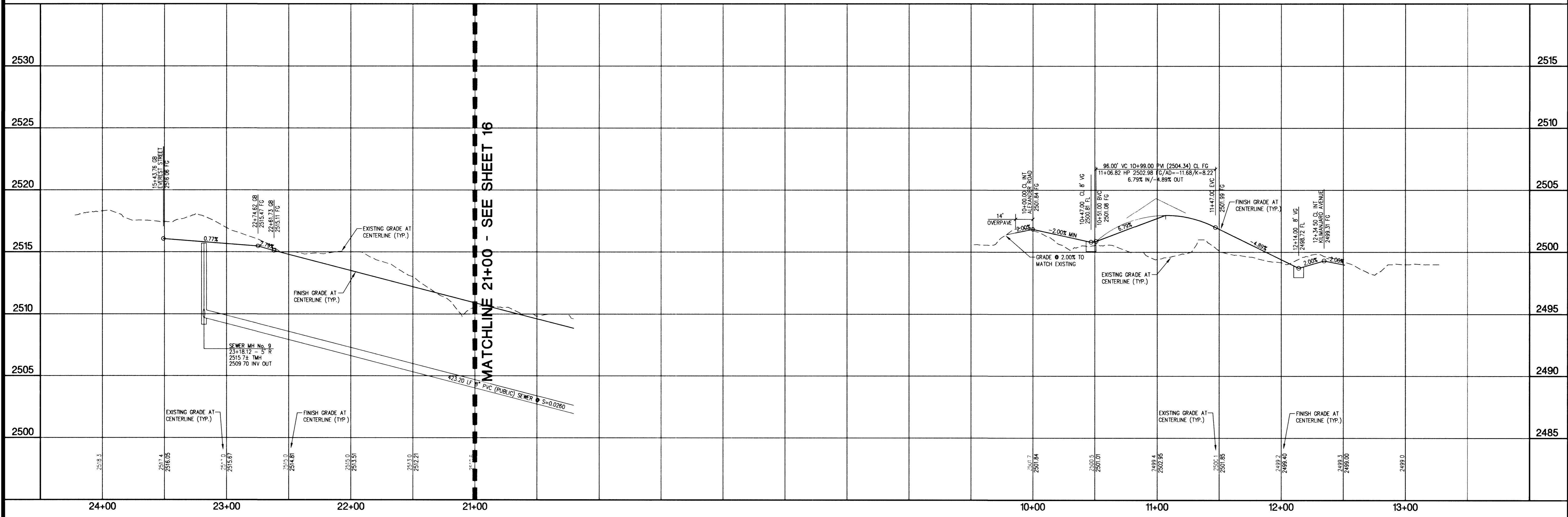


**COLD RIDGE LANE**  
(PRIVATE STREET)



MATCHLINE 21+00 - SEE SHEET 16

MATCHLINE 21+00 - SEE SHEET 16



38693

<b>KBHOME</b>	6655 Bermuda Road Las Vegas, NV 89119 (702) 938-5400 Fax (702) 938-5454
<b>Carter Burgess</b>	Carter Burgess Consultants in Planning, Engineering, Construction Management, and Fielded Services
PLAN AND PROFILE - GHOST MOUNTAIN AVE & COLD RIDGE ST	LONE MOUNTAIN CLASSICS
DRAWN BY: DOC	SCALE: 1" = 40' HORIZ. 1" = 4' VERT.
DESIGNED BY:	PROJECT NO.: 240317
CHECKED BY: MSW	SHEET 17 OF 29 SHEETS
	CLV DRAWING NO. 307Y-4687

L:\240317\Design\mpra\0317.dwg