

Call before you Dig
1-800-227-2600
Call before you Overhead
1-702-593-6111

SEWER CONSTRUCTION NOTES

1. INSTALL 8" SEWER MAIN, TRENCH SECTION BACKFILL PER D.C.S.W.C.S. NO. 5D-16
2. INSTALL 48" SANITARY SEWER MANHOLE PER DESIGN AND CONSTRUCTION STANDARDS FOR WASTEWATER COLLECTION SYSTEMS PLATE SD-1
3. REMOVE CAP & CONNECT TO EX. 8" STUB
4. INSTALL 4" SEWER LATERAL W/ 4" WYE LOCATION PER TYPICAL LOT DETAIL "A" ON SHEET D2 UNLESS NOTED OTHERWISE
5. INSTALL 8" CAP

BENCHMARK

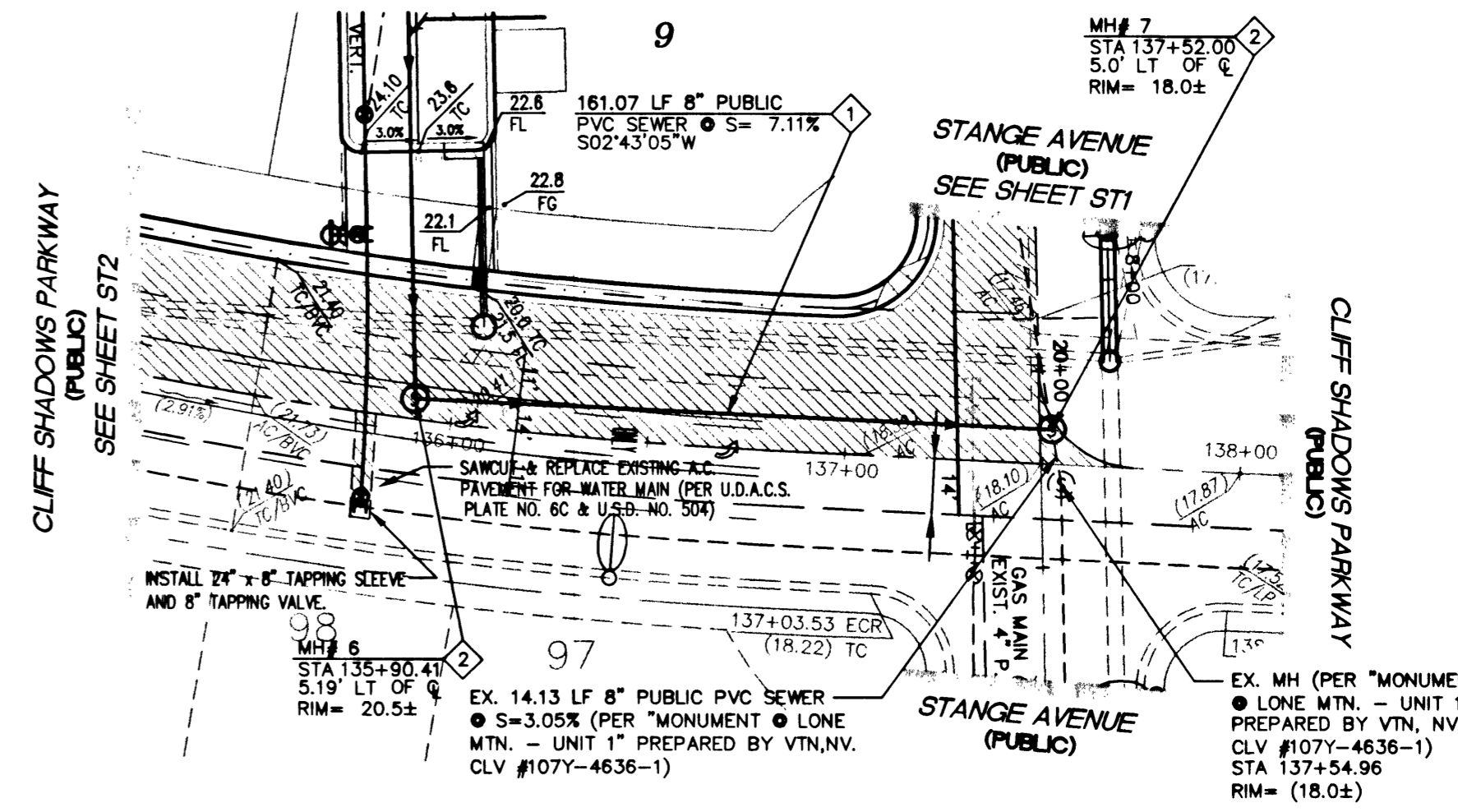
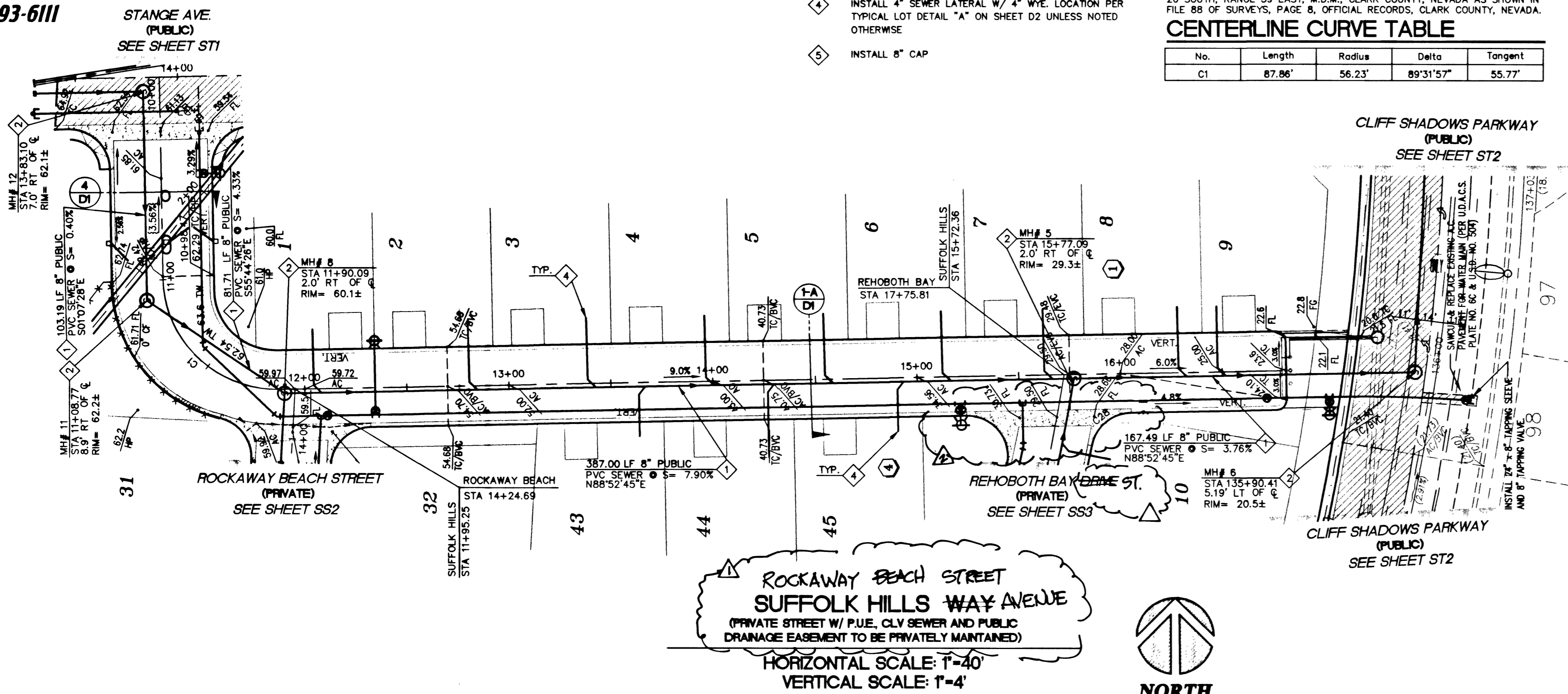
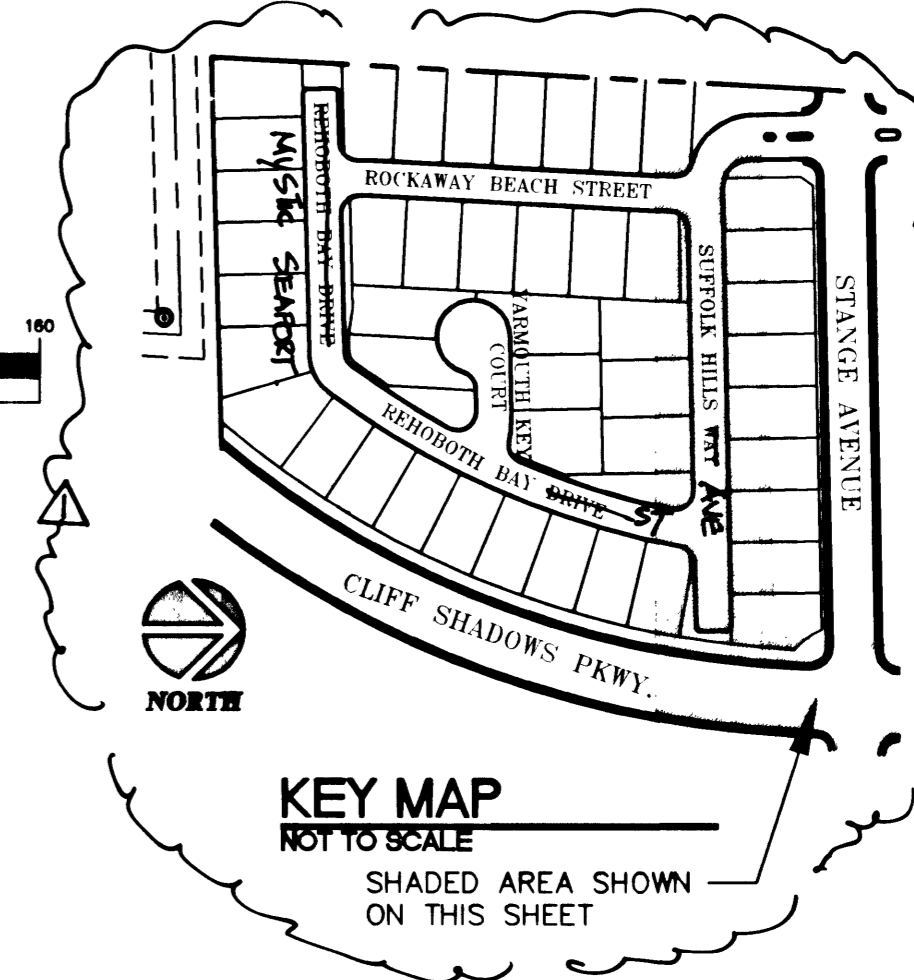
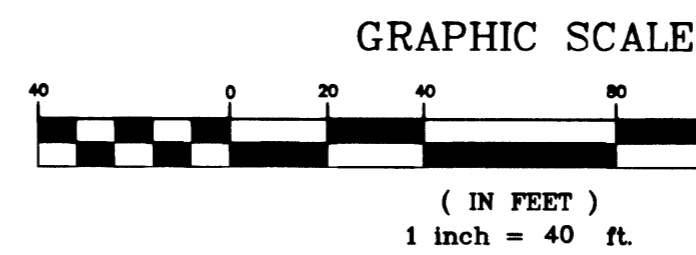
PROJECT VERTICAL DATUM: NAVD88
CITY OF LAS VEGAS B.M. 1LV00-45E
NAVD88 ELEV: 713.8497 METERS (2342.02 FEET)
RIVET AND PLATE IN TOP OF CURB, NORTHWEST RETURN OF ALEXANDER ROAD AND BUFFALO DRIVE, CLARK COUNTY, NEVADA.

BASIS OF BEARING

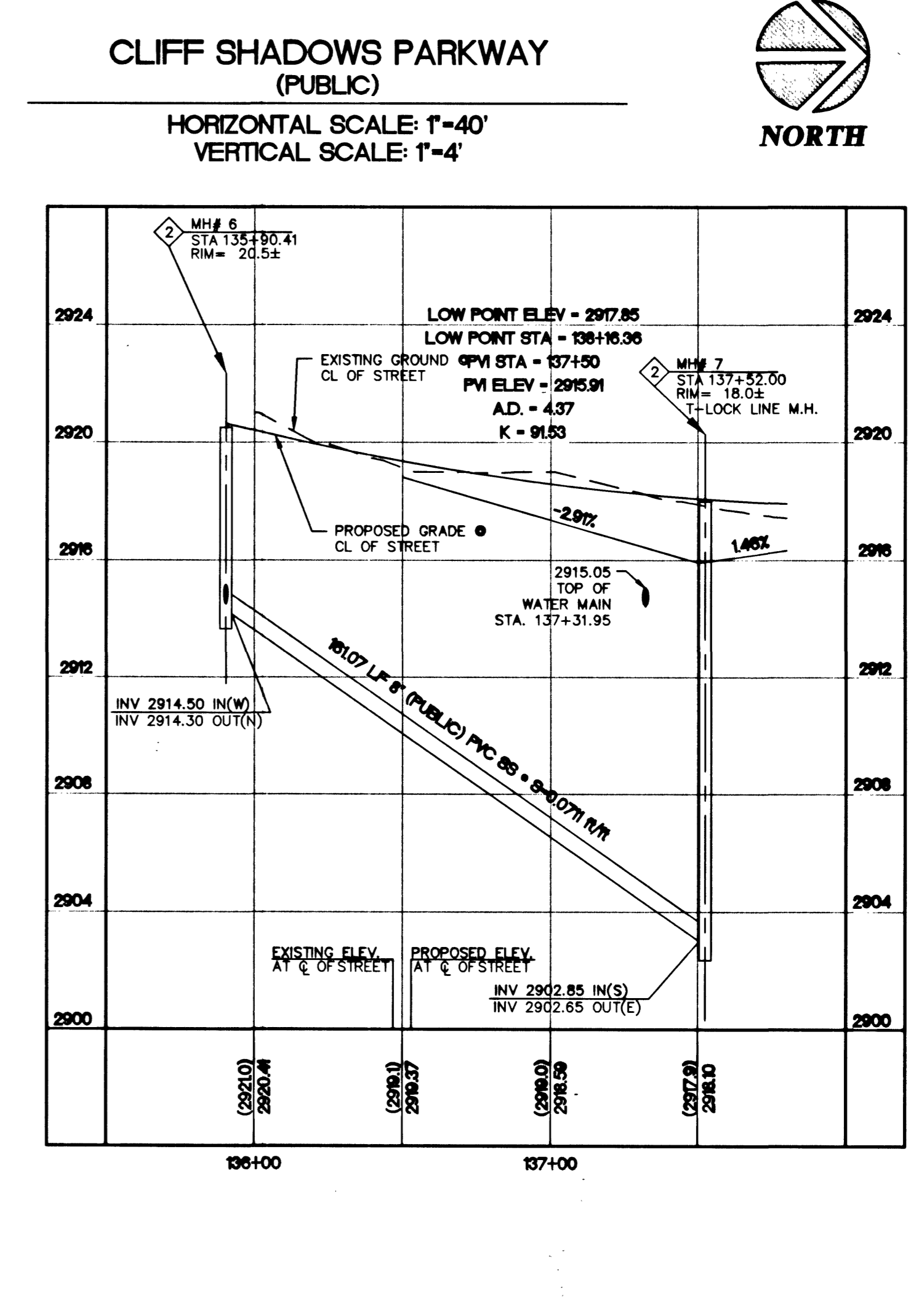
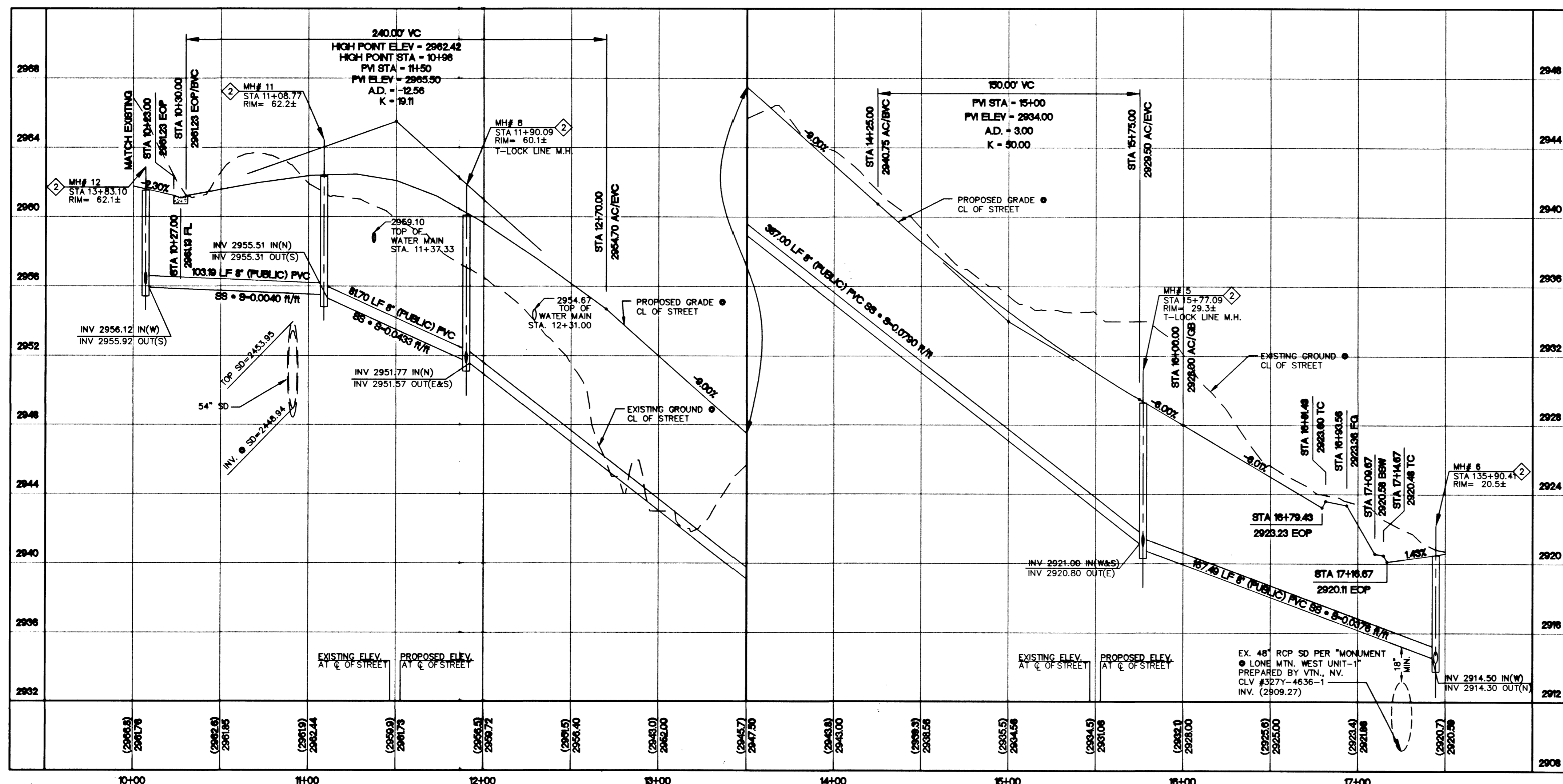
NORTH 89°27'45" EAST BEING THE NORTH LINE OF THE NORTHEAST QUARTER (NE 1/4) OF THE SOUTHWEST QUARTER (SW 1/4) OF SECTION 1, TOWNSHIP 20 SOUTH, RANGE 59 EAST, M.D.M., CLARK COUNTY, NEVADA AS SHOWN IN FILE 88 OF SURVEYS, PAGE 8, OFFICIAL RECORDS, CLARK COUNTY, NEVADA.

CENTERLINE CURVE TABLE

No.	Length	Radius	Delta	Tangent
CI	87.86'	56.23'	89°31'57"	55.77'



ROCKAWAY BEACH STREET
SUFFOLK HILLS WAY AVENUE
PRIVATE STREET W/ P.U.E. CLV SEWER AND PUBLIC DRAINAGE EASEMENT TO BE PRIVATELY MAINTAINED.
HORIZONTAL SCALE: 1"=40'
VERTICAL SCALE: 1"=4'



NO.	REVISION	BY	DATE
1	DESIGNED	P. SMITH	
2	DRAWN	R.D.P.	
3	CHECKED	P. SMITH	
4	PROJECT DATE		02/17/02
5	RELOCATE F.A.	TAL 6/4/02	11/14/02
6	ST. NAME CHANGE	TAL 11/14/02	11/14/02

CONCORDIA • LONE MOUNTAIN WEST
UNIT 4
SANITARY SEWER PLAN & PROFILE
SUFFOLK HILLS WAY AND
CLIFF SHADOWS PARKWAY
CLIFF SHADOWS VARY

CONCORDIA
H O M E S
DEVELOPER

6280 S. Valley View Blvd
Suite 200
Las Vegas, NV 89118
Tel: (702) 368-3008
Fax: (702) 368-0047

CVL
CONSULTANTS, INC.
ENGINEERING • PLANNING LAND SURVEYING

SHEET
SS1
7 OF 14
AGENCY DWG. NO.
307-4656-4

SEE GRADING PLAN FOR STREET DESIGN