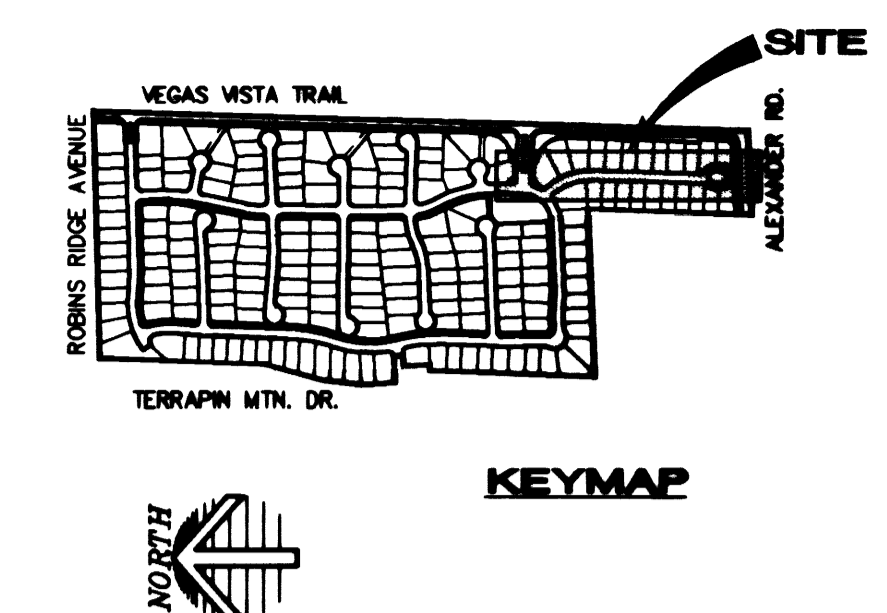
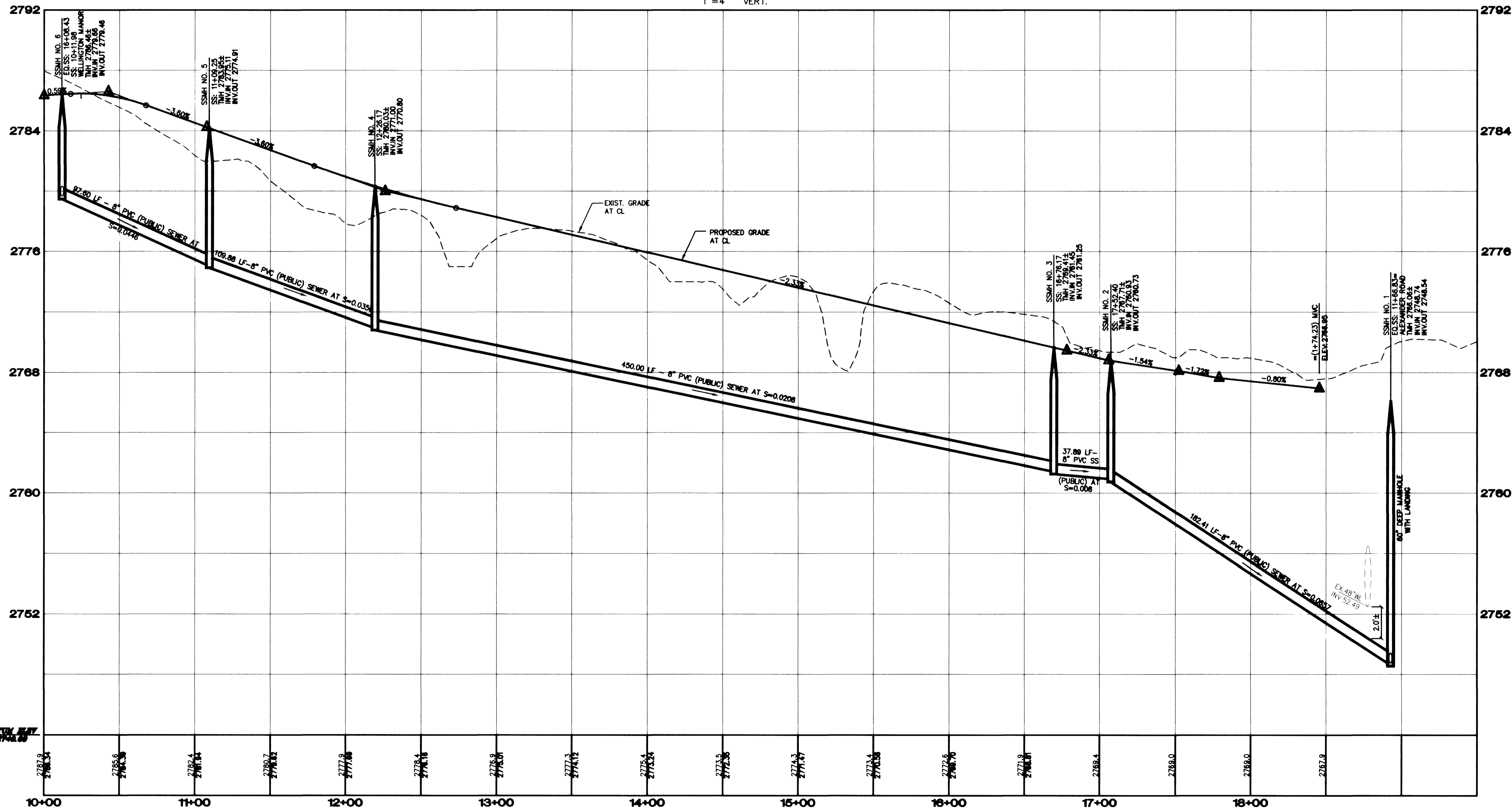


LAUREL FLAT COURT
 (PRIVATE STREET, P.U.E. AND CLV SEWER EASEMENT
 AND PUBLIC DRAINAGE EASEMENT TO BE PRIVATELY MAINTAINED)

PROFILE

SCALE: 1"=40' HORIZ.
 1"=4' VERT.



BENCHMARK
 PROJECT VERTICAL DATUM: NAVD88
 CITY OF LAS VEGAS BENCHMARK 1LV00-4SES
 NAVD88 ELEV: 713.8487 METERS (2342.02 FEET)

BASIS OF BEARINGS:
 NORTH 87° 08' 14" BEING THE BEARING OF THE SOUTH LINE OF THE
 SOUTHEAST QUARTER (SE 1/4) OF THE SOUTHEAST QUARTER (SE 1/4) OF
 SECTION 1, TOWNSHIP 20 SOUTH, RANGE 59 EAST, AS SHOWN ON A RECORD
 OF SURVEY ON FILE IN THE CLARK COUNTY, NEVADA, RECORDER'S OFFICE,
 IN FILE 89 OF SURVEYS, AT PAGE 3.

NOTE: CONTRACTOR SHALL VERIFY HORIZONTAL AND
 VERTICAL LOCATION OF EXISTING UTILITIES AND
 NOTIFY THE DESIGN ENGINEER IMMEDIATELY OF
 ANY DISCREPANCIES PRIOR TO CONSTRUCTION.

Call before you OVERHEAD 1-702-593-6111
 Call before you Dig 1-800-227-2800

GRAPHIC SCALE
 1" = 40'

NOTE:
 ALL MH STATIONING IS BASED ON SEWER
 LENGTHS FROM MANHOLE TO MANHOLE.
 ALL MANHOLES ARE 48" SIZE MANHOLES
 PER STD.DWG# SD-1.

DRAWN BY: RES		DESIGNED BY: KJ		CHECKED BY: RW		PROJECT NO: 5778	
DATE: 8-29-00		DATE: 8-29-00		DATE: 8-29-00		SCALE: 1"=40' HORIZ. 1"=4' VERT.	
SHEET 81 OF 21 SHEETS				DRAWING NO. 3074-4646-1			
SHEET 81 OF 21 SHEETS				DRAWING NO. 3074-4646-1			

KAUFMAN AND BROAD
 2727 SOUTH RAINBOW BOULEVARD LAS VEGAS, NEVADA 89146-5148
 PH (702) 873-7550 FAX (702) 362-2597

novads
 CONSULTING ENGINEERS • PLANNERS • LAND SURVEYORS
 12181 MOYER BLVD. SUITE 100 LAS VEGAS, NEVADA 89131
 (702) 814-2500

PROFESSIONAL ENGINEER SEAL
 IAN K. JOHNSON
 CIVIL
 12181 MOYER BLVD. SUITE 100
 LAS VEGAS, NEVADA 89131