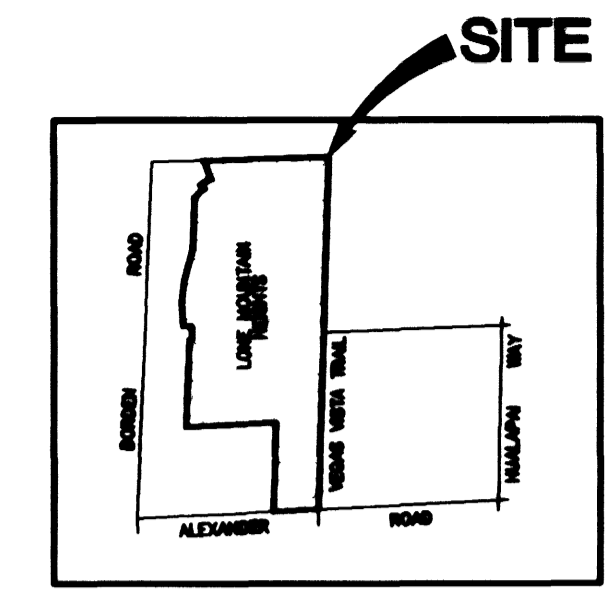


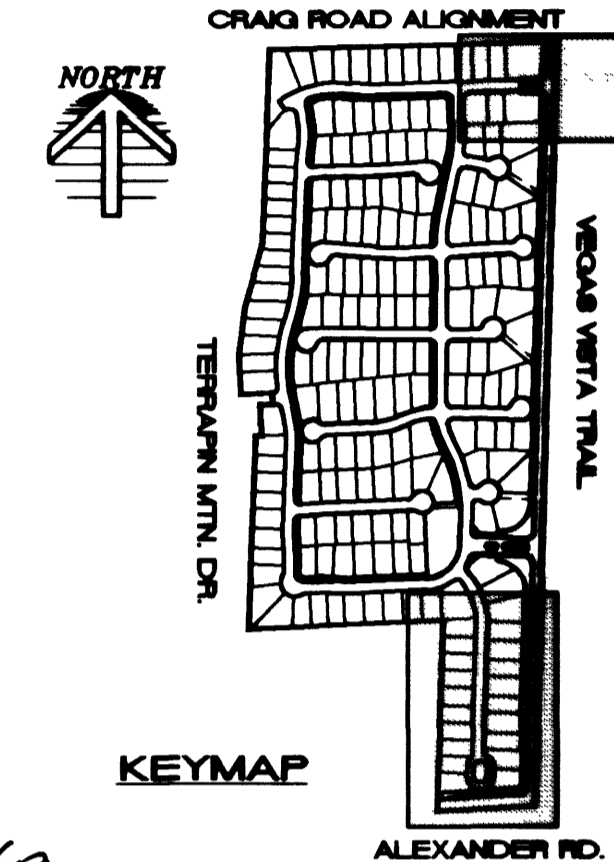
**LAS VEGAS VALLEY WATER DISTRICT NOTES**

LVWD PROJECT# 24523

- No work shall begin until the water plans have been released for construction by the LVWD. Following water plan approval, 48 hours notice shall be given to the LVWD Communication Support Center (258-7171) prior to the start of construction. Notice must be given by 2:00 p.m. the business day prior to a LVWD inspection. When requesting inspections, please refer to the Project # identified above.
- All work shall conform to LVWD's Standard Plates, Drawings, and Specifications and to the Uniform Design and Construction Standards for Water Distribution Systems (UDACS), latest edition.
- All work, except as modified by these plans or by Note 2, shall be done in accordance with the most current draft or edition of the Uniform Standard Specifications for Public Works Construction (USPCWS), Clark County Area.
- A single pipe material shall be used throughout the project unless otherwise approved by the LVWD.
- All service laterals two (2) inches in diameter and smaller shall be copper tubing with LVWD approved service saddles.
- All water meter boxes shall be located outside of driveway areas.
- All valves shall be located outside of driveways, valley and curb gutters.
- The following requirements must be met in the event a water line and sanitary or storm sewer line cross:
  - A minimum eighteen (18) inch vertical separation (outside to outside) must be maintained when the water line is installed over the sanitary or storm sewer line. If the vertical separation cannot be maintained or the water line must be placed under the sanitary or storm sewer line, the sanitary or storm sewer line must be constructed with one of the following or, as shown on these plans:
    - Potable Water supply quality material.
    - Encasement, with four (4) inch concrete (minimum).
    - Sleeving with potable water supply quality pipe.
 Each provision must extend along the sanitary or storm sewer, on either side of the main, a minimum 10 foot distance perpendicular to the water main exterior.
  - Warning tape shall be required over all mains, all six (6) inch diameter and larger service laterals, and any service lateral not installed perpendicular to the main in accordance with Standard Plate No. 27.
  - All water facilities shall be filled, disinfected, pressure tested, flushed, filled and an acceptable water sample obtained, prior to connection to the LVWD's distribution system.
  - The contractor must obtain all meters two (2) inches and smaller from LVWD Central Stores. Telephone 258-3152 forty-eight (48) hours prior to pickup.
  - Construction may interrupt service, with LVWD approval and proper notification, between the hours of 10 p.m. and 6 a.m., Sunday through Thursday. Circumstances may require temporary service feeds be installed, without LVWD reimbursement. Any temporary service feed must have prior LVWD approval.
  - All water facility construction materials used must be as listed on the LVWD's Pre-Approved Materials and Manufacturers Listing for New Facilities, latest revision, or specifically approved on these plans.



VICINITY MAP

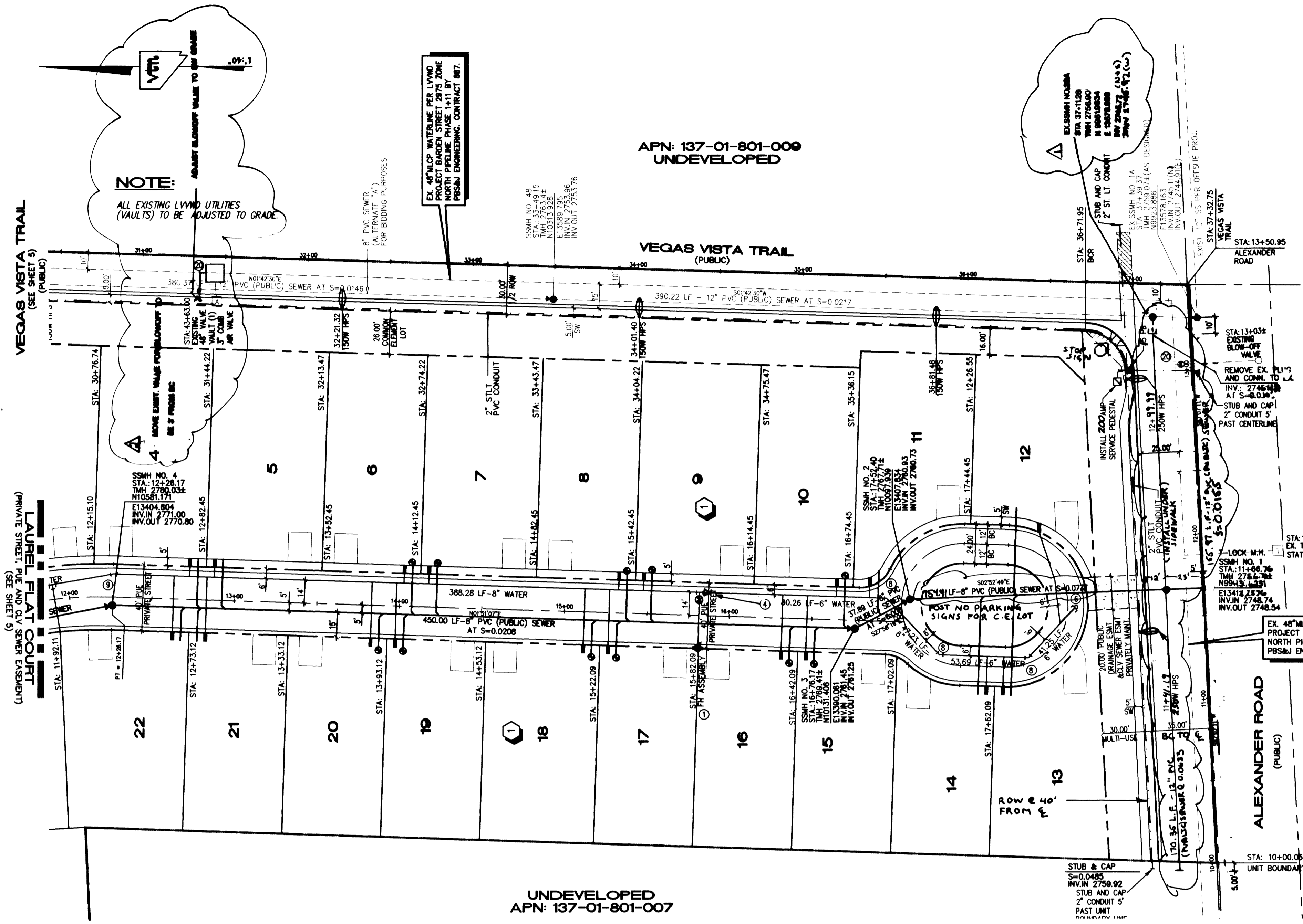


**APPROVAL:**

LAS VEGAS VALLEY WATER DISTRICT # 6  
 DATE 9/07/09

**NOTE:**  
 ALL EXISTING LVWD UTILITIES (VAULTS) TO BE ADJUSTED TO GRADE.

MATCHLINE SEE SHEET U1



**NOTE:** APPROVAL OF THESE PLANS FOR THE SERVICE LATERALS AND METERS TO FUTURE LOTS WILL NOT BE CONSTRUED AS A COMMITMENT FOR WATER SERVICE TO THESE PROPERTIES.

**NOTE:** CONTRACTOR SHALL VERIFY HORIZONTAL AND VERTICAL LOCATION OF EXISTING UTILITIES AND NOTIFY THE DESIGN ENGINEER IMMEDIATELY OF ANY DISCREPANCIES PRIOR TO CONSTRUCTION.

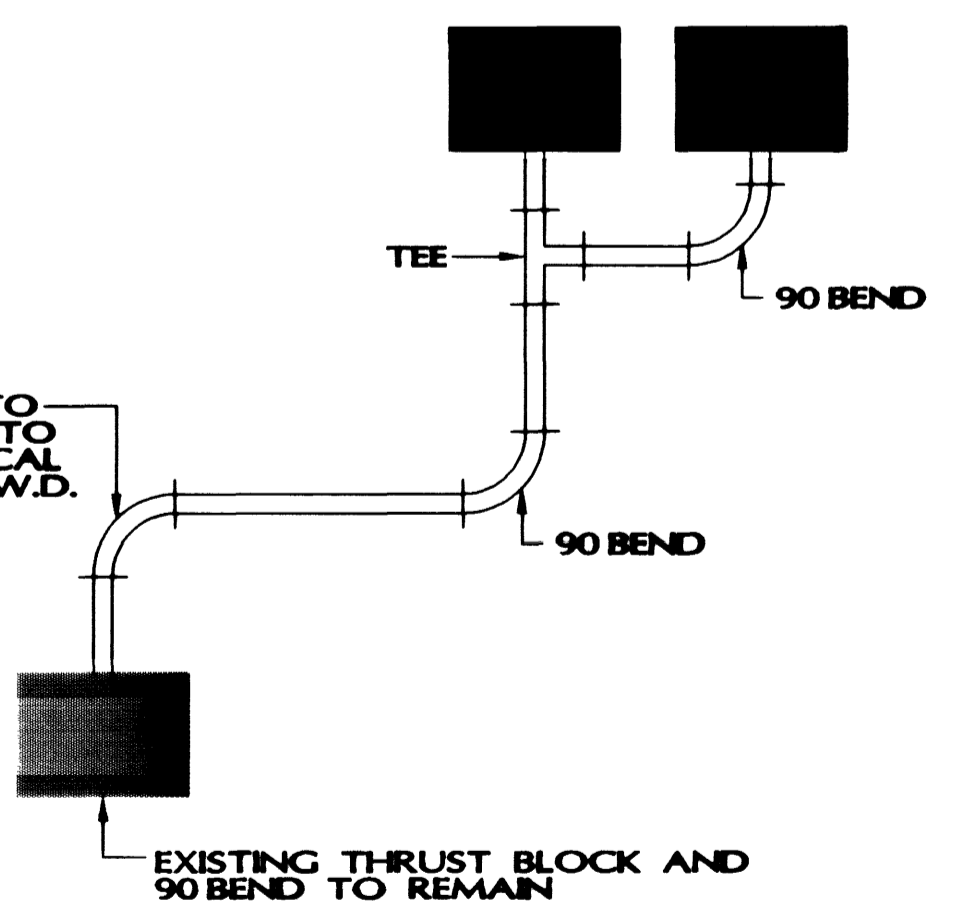
**BENCHMARK**  
 PROJECT VERTICAL DATUM: NAVD88  
 CITY OF LAS VEGAS BENCHMARK 1LV00-45ES  
 NAVD88 ELEV: 713.8497 METERS (2342.02 FEET)

RIVET AND PLATE IN TOP OF CURB, NORTHWEST RETURN OF ALEXANDER ROAD AND BUFFALO DRIVE

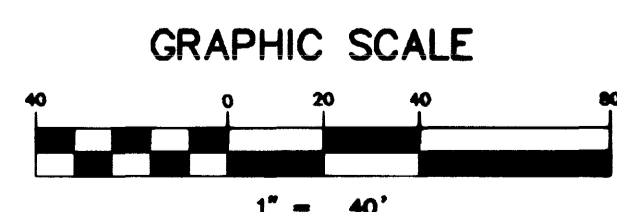
Call before you Dig **OVERHEAD**  
 1-800-227-2600 1-702-593-6111  
 25565 25918

**NOTE:**  
 THIS PROPERTY MAY HAVE STATIC WATER PRESSURE IN EXCESS OF 80 PSI. THE UNIFORM PLUMBING CODE REQUIRES THAT INDIVIDUAL, ON SITE (PRIVATE), PRESSURE REDUCING VALVES BE INSTALLED WHENEVER THE PRESSURE EXCEEDS 80 PSI. PRVs ARE IN THE DEVELOPER'S RESPONSIBILITY AND WILL NOT BE INSPECTED OR INCLUDED IN THE ACCEPTANCE OF LVWD FACILITIES.

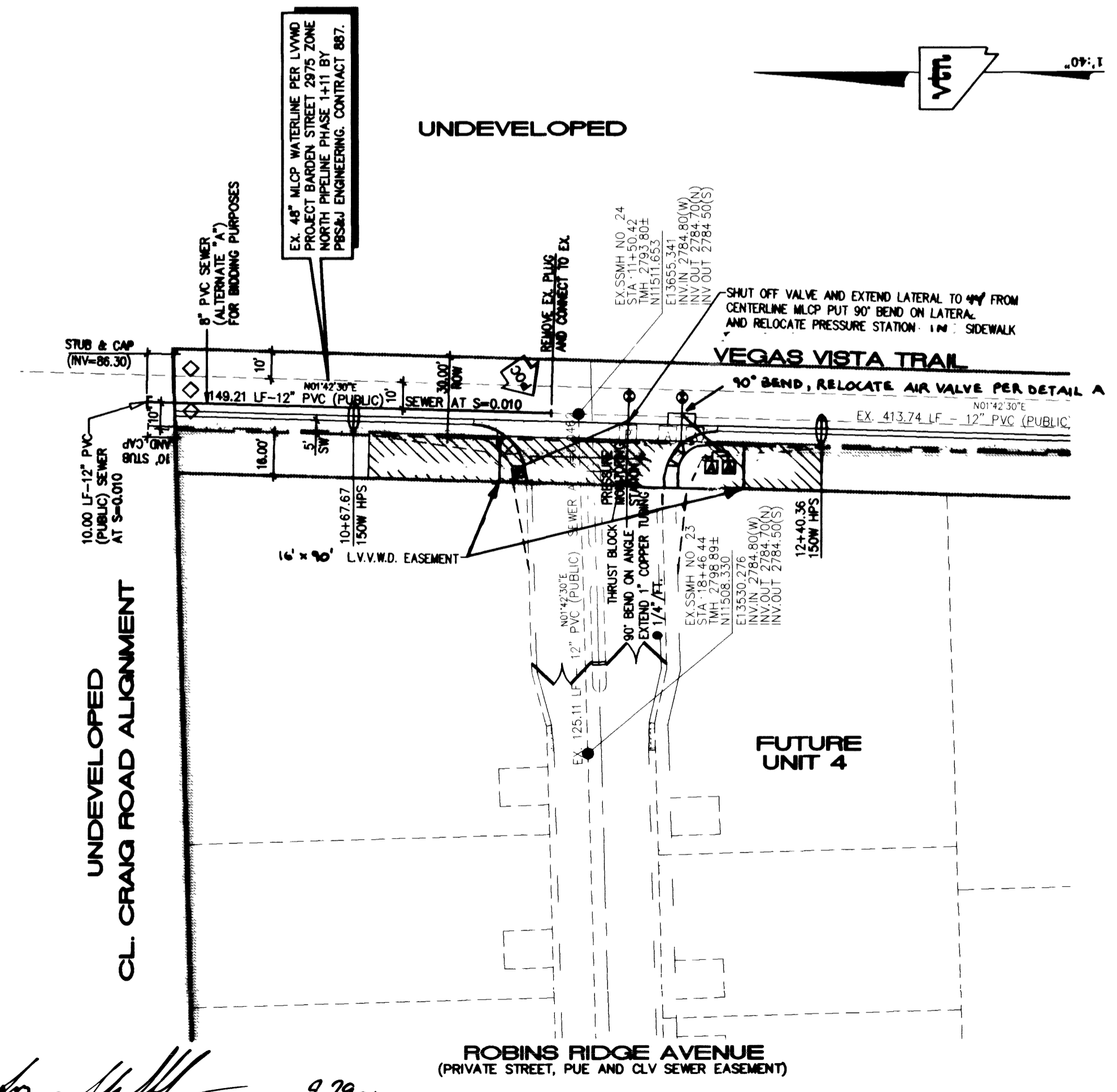
**BASIS OF BEARINGS:**  
 NORTH 87°06'14" BEING THE BEARING OF THE SOUTH LINE OF THE SOUTHEAST QUARTER (SE 1/4) OF THE SOUTHEAST QUARTER (SE 1/4) OF SECTION 1, TOWNSHIP 20 SOUTH, RANGE 59 EAST, AS SHOWN ON A RECORD OF SURVEY ON FILE IN THE CLARK COUNTY, NEVADA, RECORDER'S OFFICE, IN FILE 88 OF SURVEYS, AT PAGE 3.



**DETAIL 'A'**  
 NOT TO SCALE



CITY OF LAS VEGAS FIRE MARSHAL DATE 8/29/09



DRAWN BY: ASH		DESIGNED BY: J		CHECKED BY: IKJ		PROJECT NO: 2778	
SHEET 8-24-00		SHEET 8-24-00		SHEET 8-24-00		SCALE: 1"=40' HORIZ. NONE VERT.	
DRAWING NO. 3074-4646-1				SHEET U2 OF 21 SHEETS			
PROJECT TITLE: MASTER UTILITY PLAN				PROJECT TITLE: LONE MOUNTAIN HEIGHTS UNIT 1			
PROJECT LOCATION: KAUFMAN AND BROAD				PROJECT LOCATION: 750 PILOT ROAD, SUITE F LAS VEGAS, NV 89119 (702) 814-2500			
DATE: 9/15/09				DATE: 9/15/09			
REVISION: 1				REVISION: 1			
DATE: 9/15/09				DATE: 9/15/09			
BY: [Signature]				BY: [Signature]			
CHECKED BY: [Signature]				CHECKED BY: [Signature]			
DESIGNED BY: [Signature]				DESIGNED BY: [Signature]			
DRAWN BY: [Signature]				DRAWN BY: [Signature]			