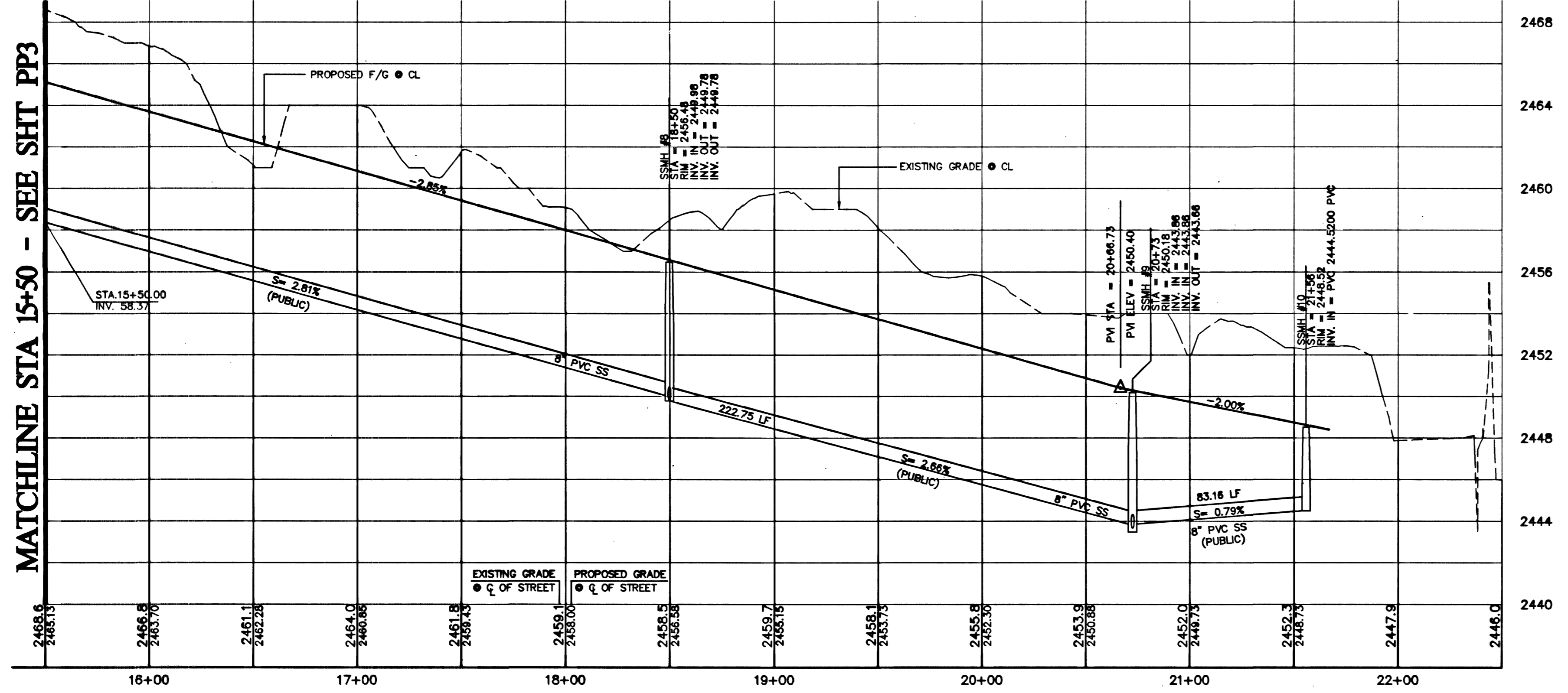
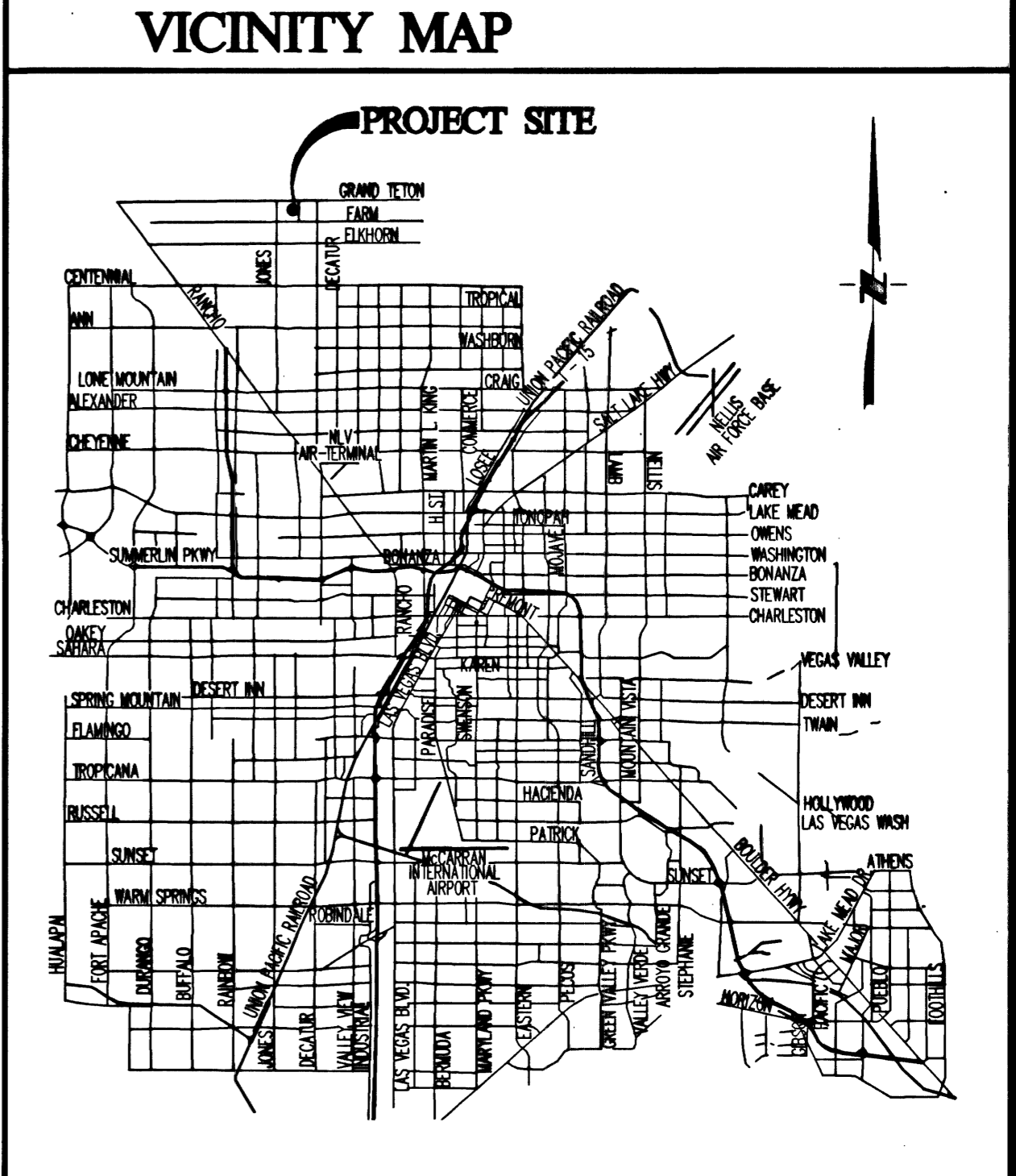
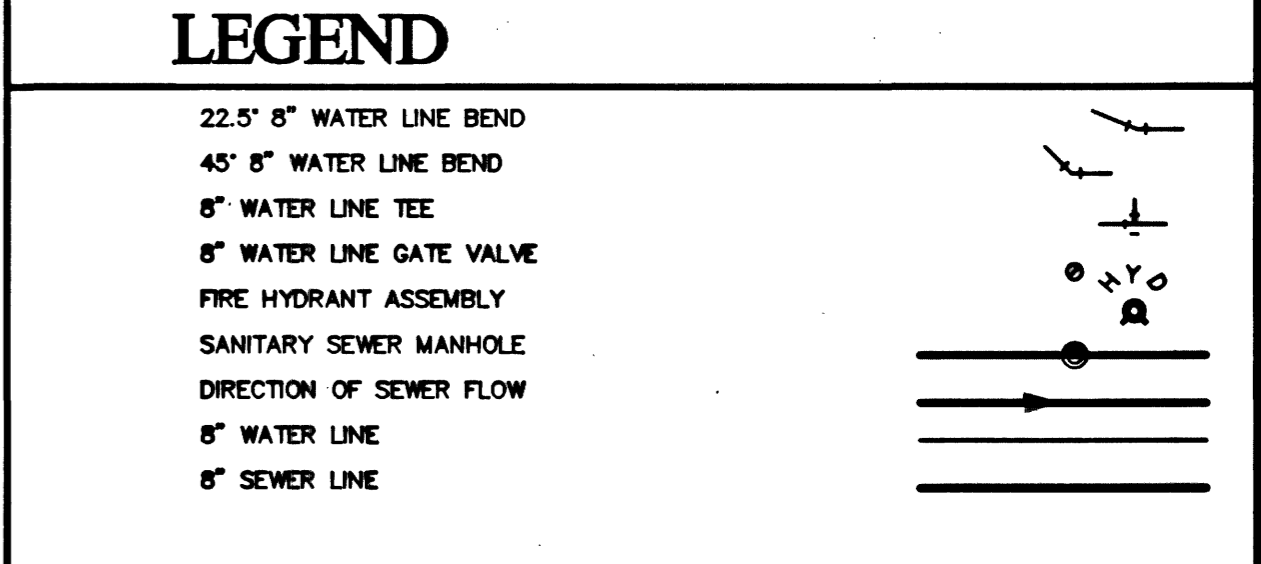


MEANDERING LIGHT AVENUE (EAST) PLAN 15+50.00 TO 21+65.75  
(PRIVATE STREET - PUBLIC SEWER)

BACK OF CURB  
LINE & CURVE  
TABLES

| No. | Radius | Delta     | Tangent | Tangent No. | Bearing       | Distance |
|-----|--------|-----------|---------|-------------|---------------|----------|
| 1   | 10.00' | 90°00'00" | 10.00'  | 15.71'      | S 05°03'34" W | 6.99'    |

- ### CONSTRUCTION NOTES
- 24" L-TYPE CURB & GUTTER (PER USD #218)
  - 2" AC PAVING
  - HANDICAP RAMP PER USD #235 CASE I (A-B-B)
  - 2" CONCRETE FLUME
  - 4" CONCRETE SIDEWALK (USD #234)
  - "A" TYPE CURB (USD #219)
  - 8" VALLEY GUTTER (PER USD #228)
  - 30" ROLL TYPE CURB & GUTTER PER USD #217A
  - 4" AC PAVING
  - TYPE II AGGREGATE BASE
  - CONSTRUCT SLEEVE PIPE PER UDACS #2.19.02.B.3C



MEANDERING LIGHT AVENUE (EAST) PROFILE 15+50.00 TO 21+65.75  
(PRIVATE STREET - PUBLIC SEWER)

1" = 40' HORIZONTAL  
1" = 4' VERTICAL

- ### ABBREVIATIONS
- |       |                                 |      |                     |
|-------|---------------------------------|------|---------------------|
| AC    | ASPHALTIC CONCRETE              | RT   | RIGHT-OF-WAY        |
| BCR   | BACK OF CURB                    | R/W  | SANITARY SEWER      |
| BVC   | BEGINNING OF VERTICAL CURVE     | SS   | SIDEWALK            |
| BM    | BENCHMARK                       | ST   | STATION             |
| CATV  | CABLE TELEVISION                | STD  | STORM DRAIN         |
| CL    | CENTERLINE                      | STD  | STANDARD            |
| CC    | CLARK COUNTY                    | STL  | STREETLIGHT         |
| CC    | CLEAR OUT                       | TC   | TOP OF CURB         |
| CC    | CLEAR YARD                      | TCB  | TOP OF BERM         |
| CC    | CURB                            | TC   | TYPICAL             |
| DI    | DROP INLET                      | VERT | VERTICAL            |
| DS    | DESIGN GRADE                    | VCC  | VERTICAL CURVE      |
| DS    | EDGE OF PAVEMENT                | VCG  | VALLEY GUTTER       |
| EC    | END OF CURVE                    | VCP  | VITRIFIED CLAY PIPE |
| EV    | EXISTING                        | WM   | WATER METER         |
| EV    | EXISTING                        |      |                     |
| FG    | FINISH GRADE                    |      |                     |
| FF    | FINISH FLOOR ELEVATION          |      |                     |
| FF    | FEET                            |      |                     |
| FL    | FIRE HYDRANT                    |      |                     |
| FL    | FLOW LINE                       |      |                     |
| GB    | GRADE BREAK                     |      |                     |
| HP    | HIGH POINT                      |      |                     |
| INT   | INVERT                          |      |                     |
| INT   | INVERT                          |      |                     |
| LFF   | LOWER FINISH FLOOR ELEVATION    |      |                     |
| LF    | LINEAR FEET                     |      |                     |
| LVVWD | LAS VEGAS VALLEY WATER DISTRICT |      |                     |
| MH    | MANHOLE                         |      |                     |
| MAX   | MAXIMUM                         |      |                     |
| MIN   | MINIMUM                         |      |                     |
| NTS   | NOT TO SCALE                    |      |                     |
| OC    | ON CENTER                       |      |                     |
| PI    | POINT OF INTERSECTION           |      |                     |
| PRC   | POINT OF REVERSE CURVE          |      |                     |
| PC    | POINT OF CURVE                  |      |                     |
| PTC   | POINT OF TANGENCY               |      |                     |
| PTC   | PROP. TOP OF CURB (BY OTHERS)   |      |                     |
| PTC   | PROP. FINISH GRADE (BY OTHERS)  |      |                     |
| PL    | PROPERTY LINE                   |      |                     |
| PB    | PULL BOX                        |      |                     |
| R     | RADIUS                          |      |                     |
| RCB   | REINFORCED CONCRETE BOX         |      |                     |
| RP    | REINFORCED CONCRETE PIPE        |      |                     |



|  |   |   |  |
|--|---|---|--|
| <h3>SCALE</h3> <p>GRAPHIC SCALE</p> <p>( IN FEET )<br/>1 inch = 40 ft.</p> | <h3>BENCHMARK</h3> <p>CITY OF LAS VEGAS BENCH MARK - BLV80-18C4<br/>RIVET AND PLATE IN TOP OF CURB AT SW CORNER OF FARM AND CIMARRON</p> <p>NAVD88 ELEVATION = 754.2088 METERS (2474.44 FT)</p> | <h3>LEGAL DESCRIPTION</h3> <p>THE SOUTH HALF (S1/2) OF THE SOUTH HALF (S1/2) OF THE NORTHWEST QUARTER (NW1/4) OF THE NORTHWEST QUARTER (NE1/4) OF SECTION 16, TOWNSHIP 19 SOUTH, RANGE 60 EAST, M.D.M., CLARK COUNTY, NEVADA.</p> | <h3>BASIS OF BEARING</h3> <p>N00°13'34"E - BEING THE WEST LINE OF THE NORTHWEST QUARTER OF THE NORTHEAST QUARTER OF SECTION 16, TOWNSHIP 19 SOUTH, RANGE 60 EAST, M.D.M., COUNTY OF CLARK, STATE OF NEVADA, AS SHOWN ON THE FINAL MAP OF LAMPLIGHT VILLAGE AT CENTENNIAL SPRINGS UNIT 2 RECORDED IN BOOK 98 ON PAGE 63, OFFICIAL RECORDS OF SAID COUNTY.</p> |
|--|---|---|--|

| <p>REVISIONS</p> <table border="1"> <thead> <tr> <th>NO.</th> <th>DESCRIPTION</th> <th>BY</th> <th>DATE</th> <th>APPR.</th> </tr> </thead> <tbody> <tr> <td> </td> <td> </td> <td> </td> <td> </td> <td> </td> </tr> </tbody> </table> | NO.         | DESCRIPTION | BY   | DATE  | APPR. |  |  |  |  |  | <p>CARINA CORPORATION<br/>2881 BUSINESS PARK COURT, SUITE 210<br/>LAS VEGAS, NV 89133<br/>(702) 228-6376 FAX: (702) 228-6002</p> | <p>TANEY ENGINEERING<br/>444 S. JONES BLVD., SUITE #1<br/>LAS VEGAS, NV 89103<br/>(702) 362-8844 FAX: (702) 362-5233</p> |
|--|-------------|-------------|--|-------|-------|--|--|--|--|--|--|--|
| NO.  | DESCRIPTION | BY          | DATE   | APPR. |       |  |  |  |  |  |  |  |
|  |             |             |  |       |       |  |  |  |  |  |  |  |
| <p>LAMPLIGHT VILLAGE UNIT FIVE<br/>AT CENTENNIAL SPRINGS</p>   |             |             | <p>STREET PLAN &amp; PROFILE<br/>MEANDERING LIGHT AVENUE (EAST)<br/>15+50.00 TO 21+65.75</p> |       |       |  |  |  |  |  |  |  |
| <p>DATE: 12-01</p> <p>SCALE: 1" = 40'</p> <p>JOB NO: CRN-00-001</p> <p>DESIGNED BY: EFT</p> <p>DRAWN BY: EFT/OGS</p> <p>SHEET NAME: PP4</p> <p>SHEET: 3071-1442-5</p> <p>11 OF 18</p>  |             |             |  |       |       |  |  |  |  |  |  |  |