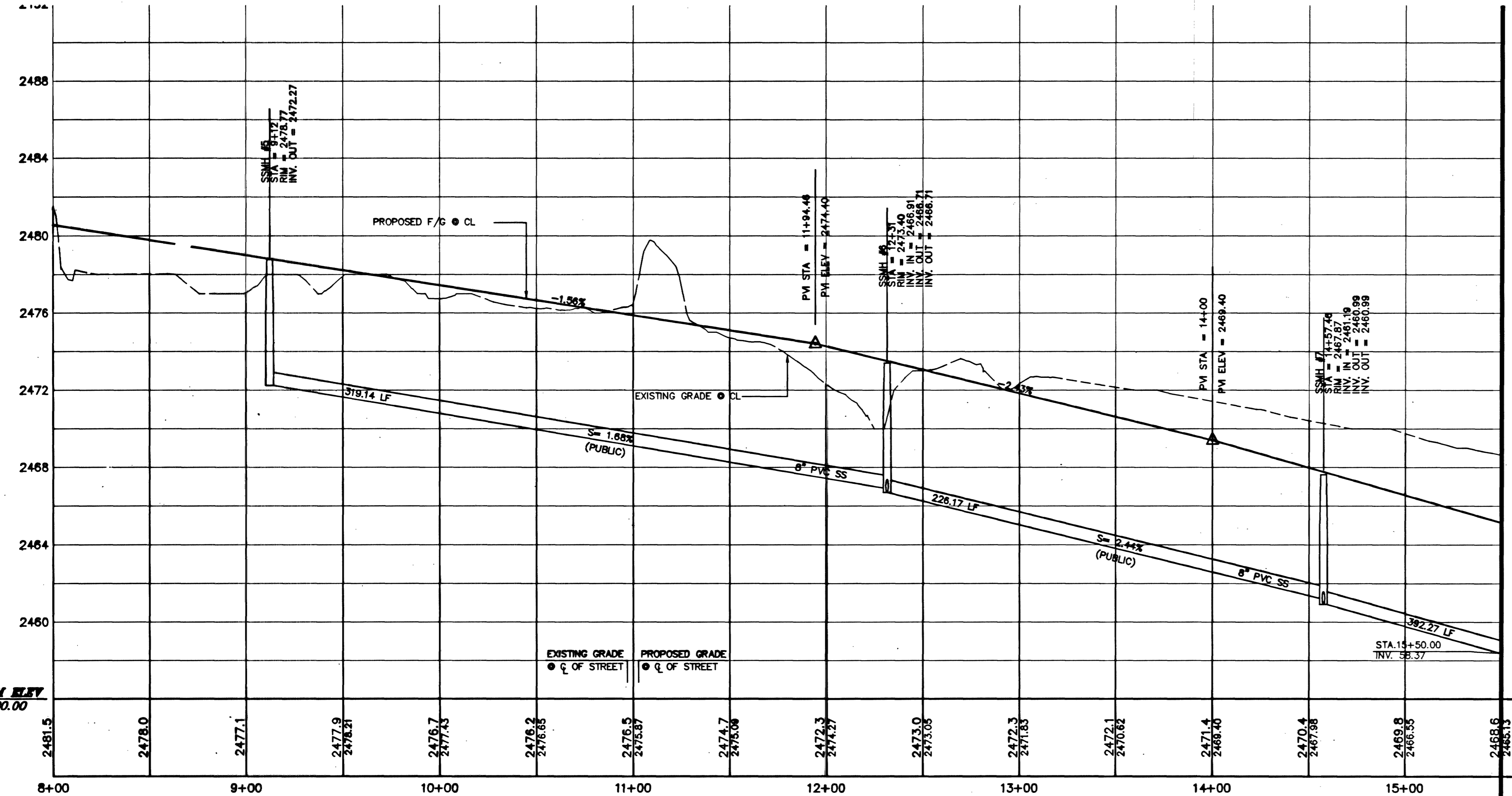
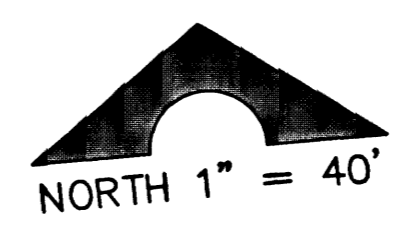


MEANDERING LIGHT AVENUE (WEST) PLAN 9+02.24 TO 15+50.00
(PRIVATE STREET - PUBLIC SEWER)



MEANDERING LIGHT AVENUE (WEST) PROFILE 9+02.24 TO 15+50.00
(PRIVATE STREET - PUBLIC SEWER)

F = 40' HORIZONTAL
F = 4' VERTICAL



NOTE: PRIVATE STREETS ARE P.U.E.'S, PUBLIC SEWER EASEMENTS, AND PUBLIC DRAINAGE EASEMENTS TO BE PRIVATELY MAINTAINED BY HOME OWNERS ASSOCIATION

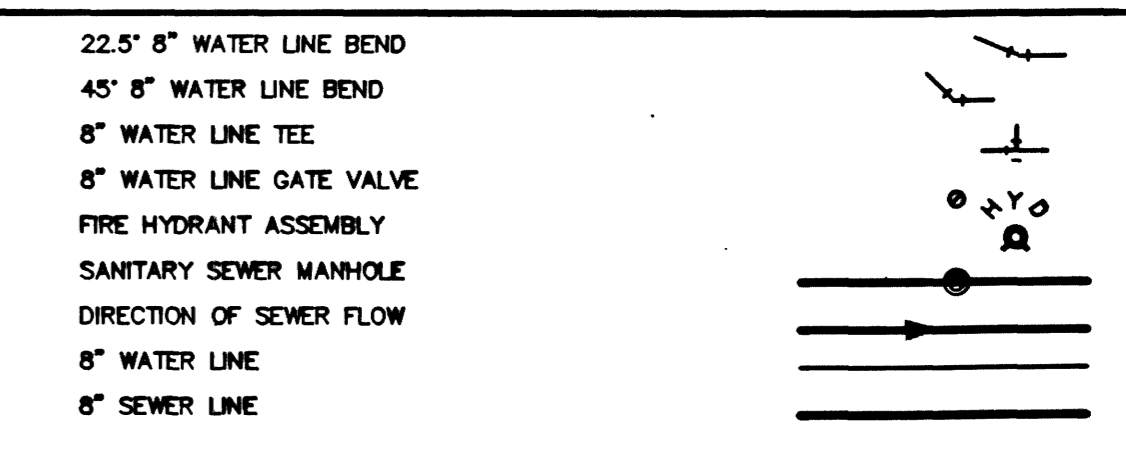
BACK OF CURB LINE & CURVE TABLES

No.	Radius	Delta	Tangent	Tangent No.	Bearing	Distance
CT 1	10.00'	180°00'00"	10.00'	15.71'	L 1 S 05°03'34" W	8.99'

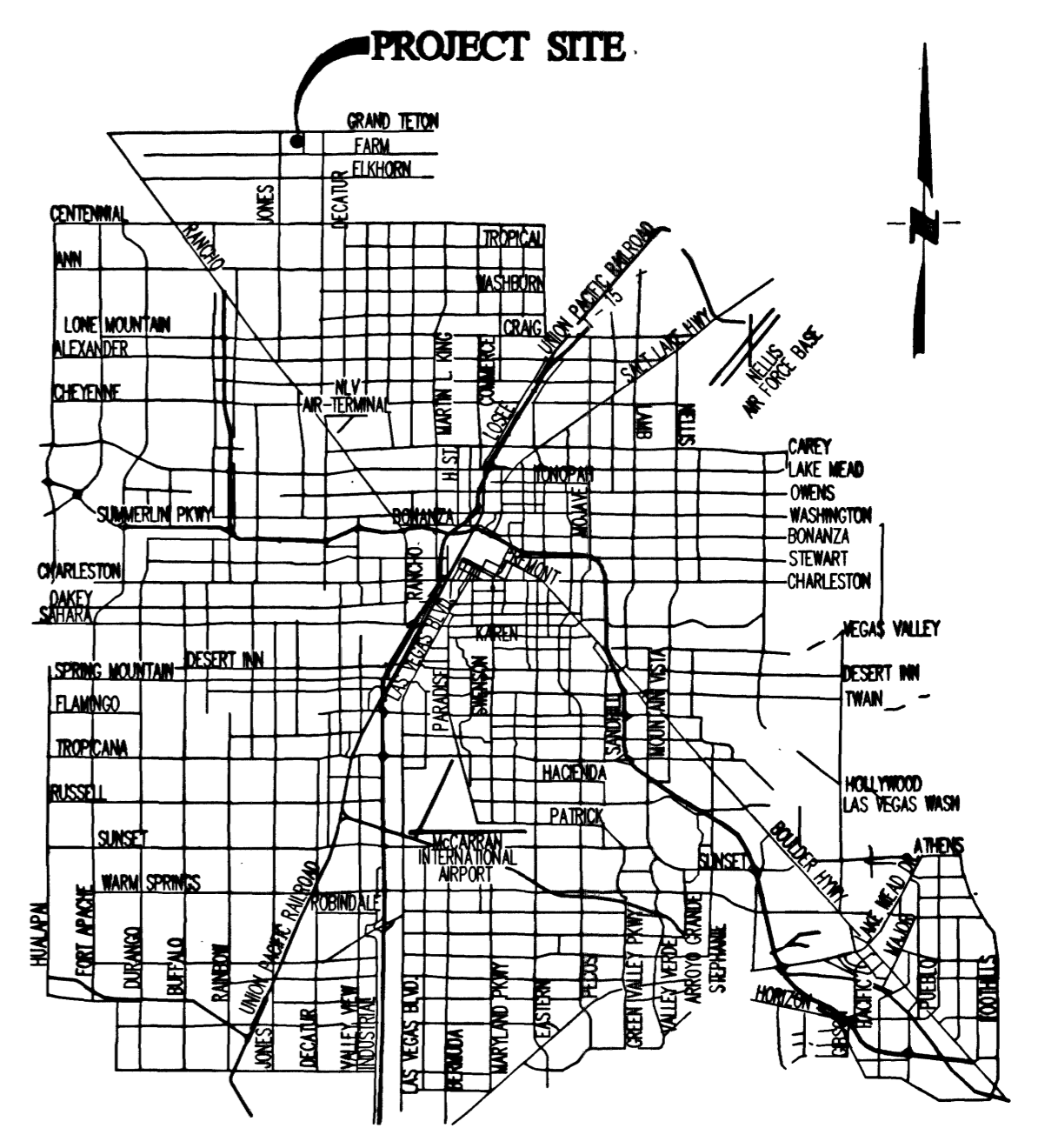
CONSTRUCTION NOTES

- 1 24" L-TYPE CURB & GUTTER (PER USD #215)
 - 2 2" AC PAVING
 - 3 HANDICAP RAMP PER USD #235 CASE I (A-B-5)
 - 4 2" CONCRETE FLUME
 - 5 4" CONCRETE SIDEWALK (USD #234)
 - 6 'A' TYPE CURB (USD #219)
 - 7 8" VALLEY GUTTER (PER USD #228)
 - 10 30" ROLL TYPE CURB & GUTTER PER USD #217 A
 - 11 4" AC PAVING
- TYPE II AGGREGATE BASE

LEGEND



VICINITY MAP

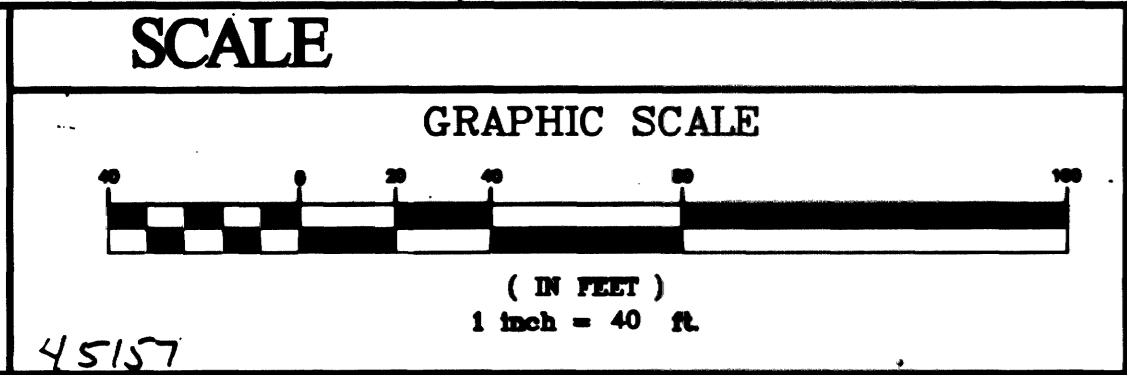


ABBREVIATIONS

AC	ASPHALTIC CONCRETE	RT	RIGHT-OF-WAY
BCR	BACK OF CURB	SS	SANITARY SEWER
PVC	BACK OF CURB RADIUS	ST	STATION
BM	BEGINNING OF VERTICAL CURVE	SD	STORM DRAIN
CBM	BENCH MARK	STD	STANDARD
CC/TV	CABLE TELEVISION	STL	STREETLIGHT
CC/CB	CITY OF BOULDER CITY	TC	TOP OF CURB
CC/CC	CLARK COUNTY	TB	TOP OF BERM
CC/CO	CLEAN OUT	TOB	TOP OF CURB
CC/CC	CUBIC YARD	TOP	TYPICAL
CC/CC	DROP INLET	VERT	VERTICAL
CC/CC	DESIGN GRADE	VCC	VERTICAL CURVE
CC/CC	EDGE OF PAVEMENT	VV	VALLEY GUTTER
CC/CC	END OF CURVE	VV	VITRIFIED CLAY PIPE
CC/CC	END OF VERTICAL CURVE	WM	WATER METER
CC/CC	EXISTING FINISH GRADE		
CC/CC	FINISH GRADE ELEVATION		
CC/CC	FEET		
CC/CC	FIRE HYDRANT		
CC/CC	FLOW LINE		
CC/CC	GRADE BREAK		
CC/CC	HIGH POINT		
CC/CC	INVERT		
CC/CC	LOWER FINISH GRADE ELEVATION		
CC/CC	LINEAR FEET		
CC/CC	LAS VEGAS VALLEY WATER DISTRICT		
CC/CC	MAXIMUM		
CC/CC	MINIMUM		
CC/CC	NOT TO SCALE		
CC/CC	ON CENTER		
CC/CC	POINT OF INTERSECTION		
CC/CC	POINT OF REVERSE CURVE		
CC/CC	POINT OF CURVE		
CC/CC	POINT OF TANGENCY		
CC/CC	PROP. TOP OF CURB (BY OTHERS)		
CC/CC	PROP. FINISH GRADE (BY OTHERS)		
CC/CC	PULL BOX		
CC/CC	RADIUS		
CC/CC	REINFORCED CONCRETE BOX		
CC/CC	REINFORCED CONCRETE PIPE		

Call Two Working Days Before You Dig!

Dig Safely. Dig Safely.
1-800-227-2600



BENCHMARK

CITY OF LAS VEGAS BENCH MARK - 81500-1804 RIVET AND PLATE IN TOP OF CURB AT SW CORNER OF FARM AND CIMARRON

NAVD83 ELEVATION = 754.2098 METERS (2474.44 FT)

LEGAL DESCRIPTION

THE SOUTH HALF (S1/2) OF THE SOUTH HALF (S1/2) OF THE NORTHWEST QUARTER (NW1/4) OF THE NORTHEAST QUARTER (NE1/4) OF SECTION 16, TOWNSHIP 19 SOUTH, RANGE 60 EAST, M.D.M., CLARK COUNTY, NEVADA.

BASIS OF BEARING

N001°34'E - BEING THE WEST LINE OF THE NORTHWEST QUARTER OF THE NORTHEAST QUARTER OF SECTION 16, TOWNSHIP 19 SOUTH, RANGE 60 EAST, M.D.M., COUNTY OF CLARK, STATE OF NEVADA, AS SHOWN ON THE FINAL MAP OF LAMPLIGHT VILLAGE AT CENTENNIAL SPRINGS UNIT 2 RECORDED IN BOOK 98 ON PAGE 63, OFFICIAL RECORDS OF SAID COUNTY.

NO.	DESCRIPTION	BY	DATE	APPR.

CARINA CORPORATION
2881 BUSINESS PARK COURT, SUITE 210
LAS VEGAS, NEVADA 89129
(702) 228-8376 FAX: (702) 228-6002

TANEY ENGINEERING
4455 W. LAS VEGAS BLVD., SUITE #1
LAS VEGAS, NV 89119
(702) 362-8844 FAX: (702) 362-5233

LAMPLIGHT VILLAGE UNIT FIVE AT CENTENNIAL SPRINGS

STREET PLAN & PROFILE MEANDERING LIGHT AVENUE (WEST) 9+02.24 TO 15+50.00

DATE: 12-01
SCALE: 1" = 40'
JOB NO: CRN-00-001
DESIGNED BY: EFT
DRAWN BY: EFT/OGS
SHEET NAME: PP3
SHEET: 3 of 18
10 OF 18