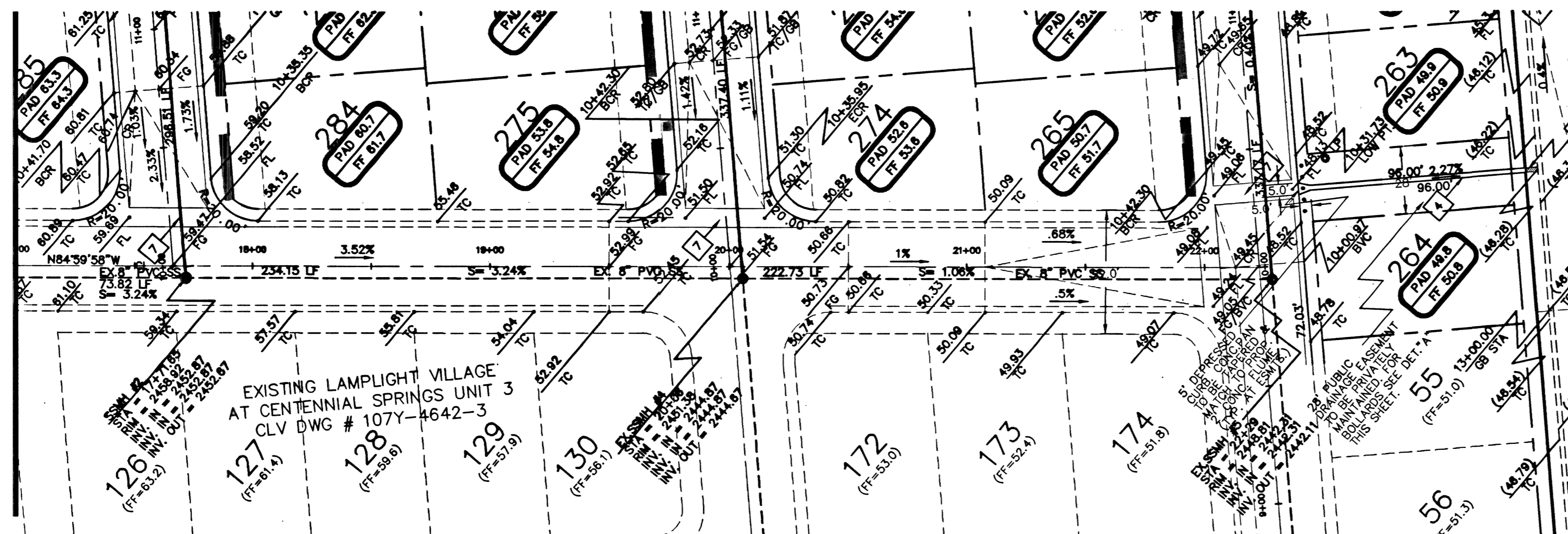


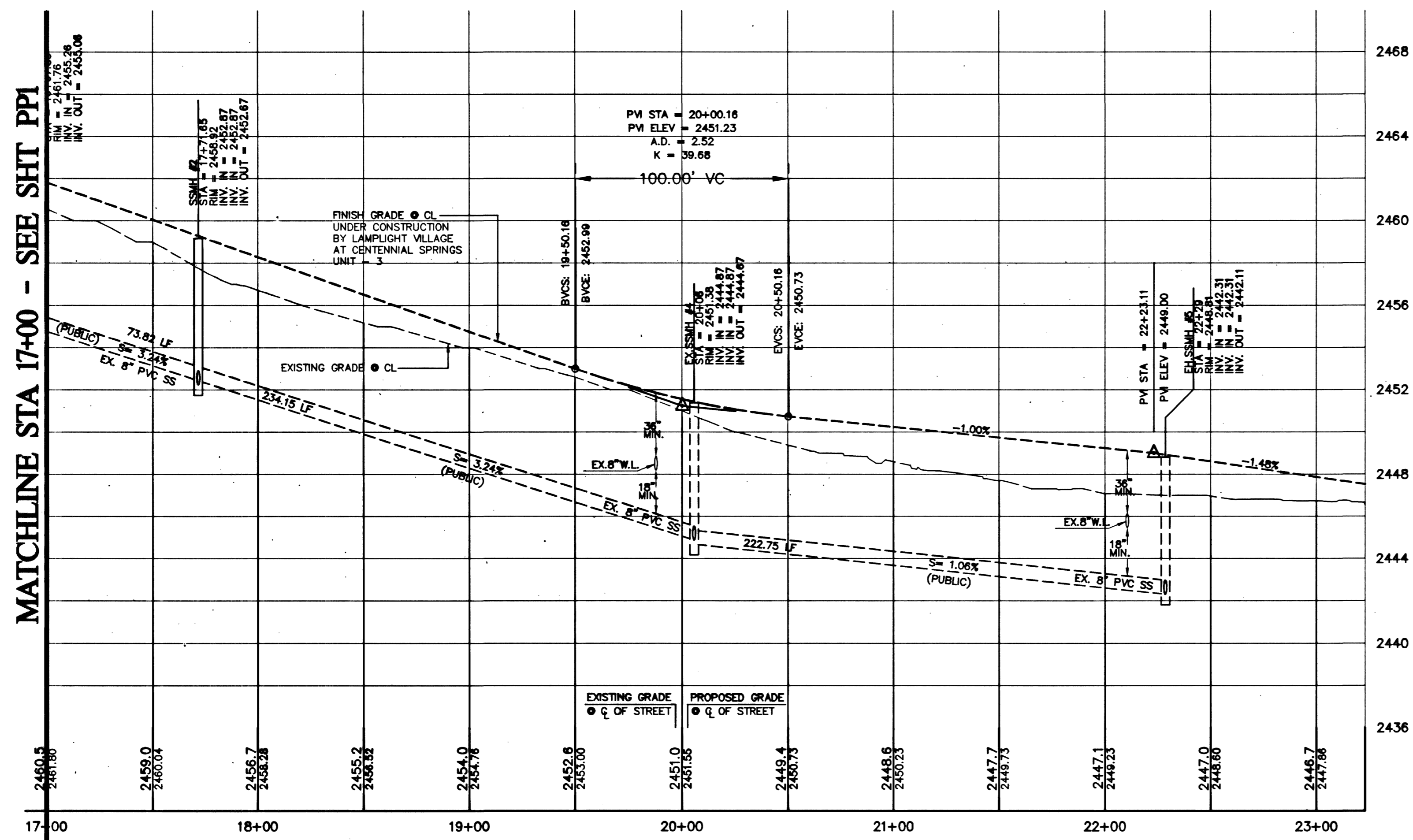
CAMERON GROVE
SEE SHEET PP6

HIDDEN GAZEBO ST.
SEE SHEET PP7

NATURE'S SONG ST.
SEE SHEET PP7



EXISTING EVENING SHADE AVE. (EAST) PLAN - STA 17+00 TO STA 22+43
(PRIVATE STREET - PUBLIC SEWER)



EXISTING EVENING SHADE AVE. (EAST) PROFILE - STA 17+00 TO STA 22+43
(PRIVATE STREET - PUBLIC SEWER)

1" = 40' HORIZONTAL
1" = 4' VERTICAL

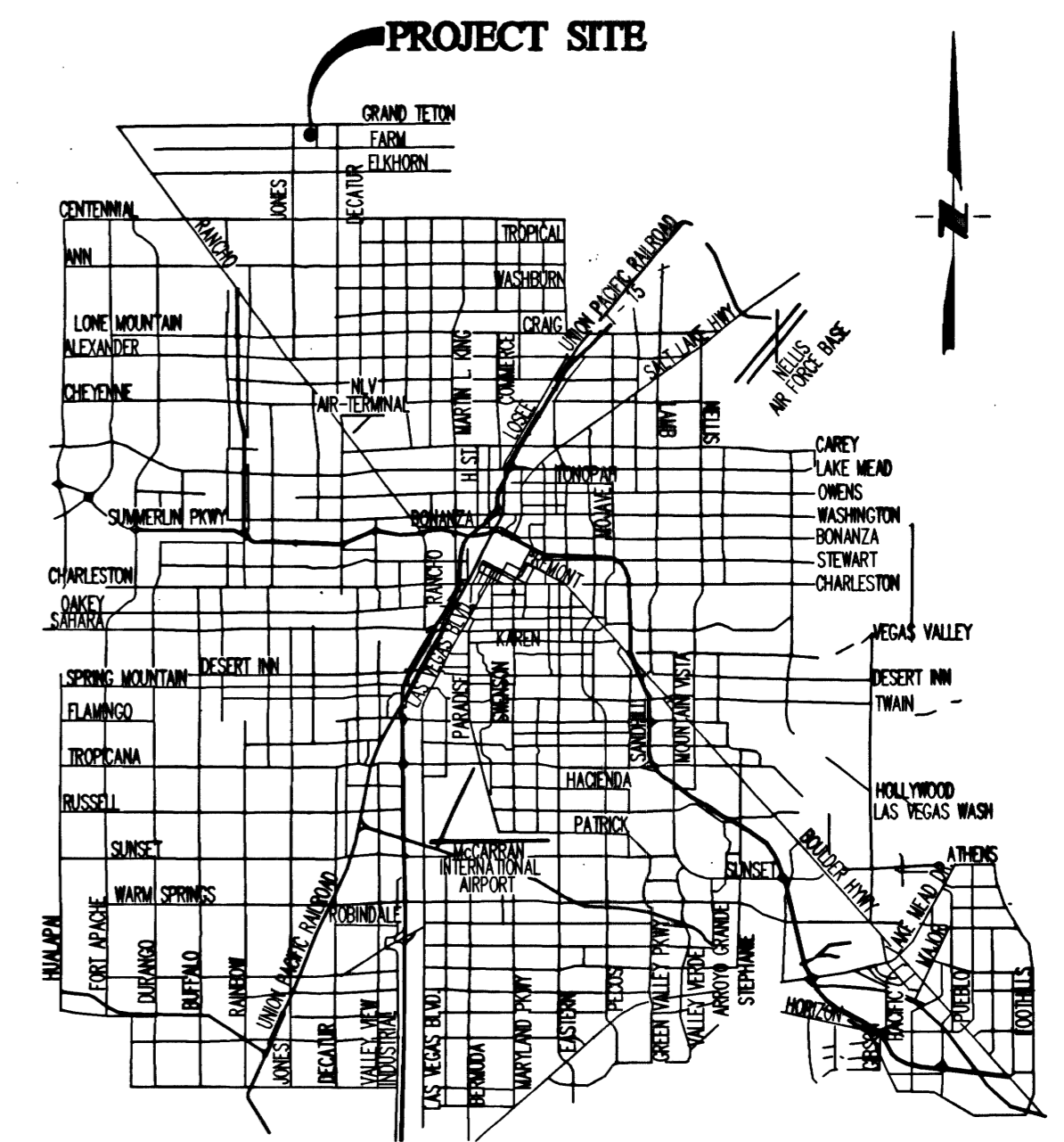
CONSTRUCTION NOTES

- 1 24" L-TYPE CURB & GUTTER (PER USD #216)
 - 2 2" AC PAVING
 - 3 HANDICAP RAMP PER USD #235 CASE I (A=B=8')
 - 4 2" CONCRETE FLUME
 - 5 4" CONCRETE SIDEWALK (USD #234)
 - 6 'A' TYPE CURB (USD #219)
 - 7 8" VALLEY GUTTER (PER USD #228)
 - 10 30" ROLL TYPE CURB & GUTTER PER USD #217 A
 - 11 4" AC PAVING
- TYPE II AGGREGATE BASE

LEGEND

- 22.5" 8" WATER LINE BEND
- 45" 8" WATER LINE BEND
- 8" WATER LINE TEE
- 8" WATER LINE GATE VALVE
- FIRE HYDRANT ASSEMBLY
- SANITARY SEWER MANHOLE
- DIRECTION OF SEWER FLOW
- 8" WATER LINE
- 8" SEWER LINE

VICINITY MAP



ABBREVIATIONS

- | | |
|--------------------------------------|-------------------------|
| AC ASPHALTIC CONCRETE | RT RIGHT-OF-WAY |
| BC BACK OF CURB | SAW SANITARY SEWER |
| BVC BEGINNING OF VERTICAL CURVE | SS SIDEWALK |
| BM BENCH MARK | STA STATION |
| CAV CABLE TELEVISION | SD STANDARD |
| CL CENTERLINE | STD STORM DRAIN |
| CCB CITY OF BOLDER CITY | STL STREETLIGHT |
| CCO CLARK COUNTY | TC TOP OF CURB |
| CCS CLEAN OUT | TOB TOP OF BERM |
| CCY CUBIC YARD | TYB TYPICAL |
| DI DROP INLET | TYR TYPICAL |
| DG DESIGN GRADE | VERT VERTICAL |
| EP EDGE OF PAVEMENT | VC VALLEY CURVE |
| EC END OF CURVE | VG VALLEY GUTTER |
| EV END OF VERTICAL CURVE | VCP VITRIFIED CLAY PIPE |
| EX EXISTING | W WATER |
| FG FINISH GRADE | WM WATER METER |
| FF FINISH FLOOR ELEVATION | |
| FEET FEET | |
| FL FIRE HYDRANT | |
| FLW FLOW LINE | |
| GB GRADE BREAK | |
| HP HIGH POINT | |
| INV INVERT | |
| LF LOWER FINISH FLOOR ELEVATION | |
| LFV LINEAR FEET | |
| LVVW LAS VEGAS VALLEY WATER DISTRICT | |
| MH MANHOLE | |
| MAX MAXIMUM | |
| MIN MINIMUM | |
| NTS NOT TO SCALE | |
| OC ON CENTER | |
| PI POINT OF INTERSECTION | |
| PRC POINT OF REVERSE CURVE | |
| PC POINT OF CURVE | |
| PT POINT OF TANGENCY | |
| PTO PROP TOP OF CURB (BY OTHERS) | |
| PL PROP FINISH GRADE (BY OTHERS) | |
| PL PROPERTY LINE | |
| PB PULL BOX | |
| R RADIUS | |
| RFB REINFORCED CONCRETE BOX | |
| RCP REINFORCED CONCRETE PIPE | |

Call Two Working Days
Before You Dig

Dig Safely. Dig Safely
1-800-227-2600

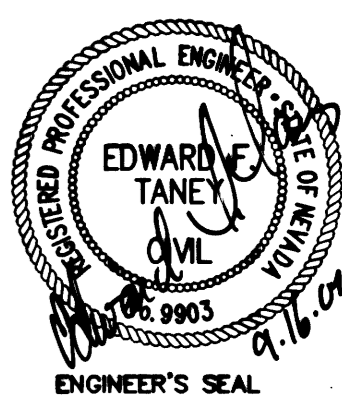
NO.	DESCRIPTION	BY	DATE	APPR.

CARINA CORPORATION
2881 BUSINESS PARK COURT, SUITE 210
LAS VEGAS, NEVADA 89128
(702) 228-6376 FAX: (702) 228-6002

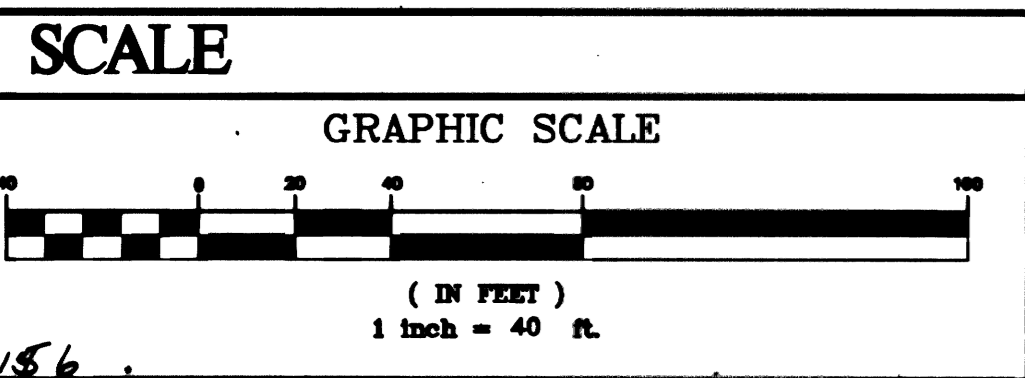
TANNEY ENGINEERING
4445 S. JONES BLVD. SUITE #1
LAS VEGAS, NV 89103
(702) 362-8884 FAX: (702) 362-5253

LAMPLIGHT VILLAGE UNIT FIVE
AT CENTENNIAL SPRINGS

STREET PLAN & PROFILE
EVENING SHADE AVE. (EAST)
17+00 TO 22+43



DATE: 12-01
SCALE: 1" = 40'
JOB NO: CRN-00-001
DESIGNED BY: EFT
DRAWN BY: EFT/OGS
SHEET NAME: PP2
SHEET: 3074-4642-5
9 OF 18



BENCHMARK

CITY OF LAS VEGAS BENCH MARK - BLV90-18C4
RIVET AND PLATE IN TOP OF CURB AT SW CORNER OF
FARM AND CEMARRON

NAVD88 ELEVATION= 754.2088 METERS
(2474.44 FT)

LEGAL DESCRIPTION

THE SOUTH HALF (S1/2) OF THE SOUTH HALF
(S1/2) OF THE NORTHWEST QUARTER (NW1/4) OF
THE NORTHWEST QUARTER (NE1/4) OF SECTION 16,
TOWNSHIP 19 SOUTH, RANGE 60 EAST, M.D.M.,
CLARK COUNTY, NEVADA.

BASIS OF BEARING

N001°34'E - BEING THE WEST LINE OF THE
NORTHWEST QUARTER OF THE NORTHEAST
QUARTER OF SECTION 16, TOWNSHIP 19
SOUTH, RANGE 60 EAST, M.D.M., COUNTY OF
CLARK, STATE OF NEVADA, AS SHOWN ON
THE FINAL MAP OF LAMPLIGHT VILLAGE AT
CENTENNIAL SPRINGS UNIT 2 RECORDED IN
BOOK 98 ON PAGE 63, OFFICIAL RECORDS OF
SAID COUNTY.

FILE NAME: CRN00001.DWG