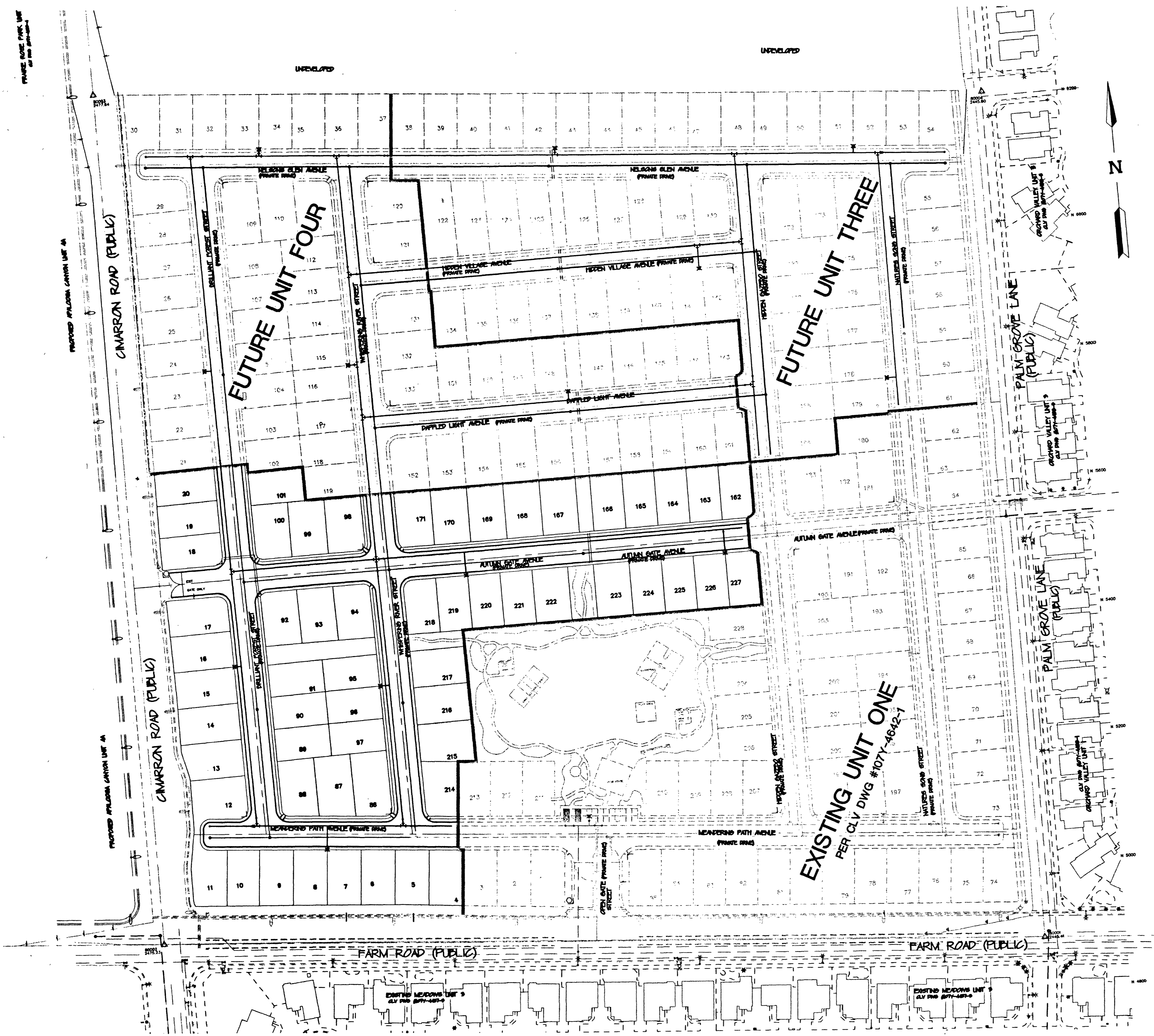
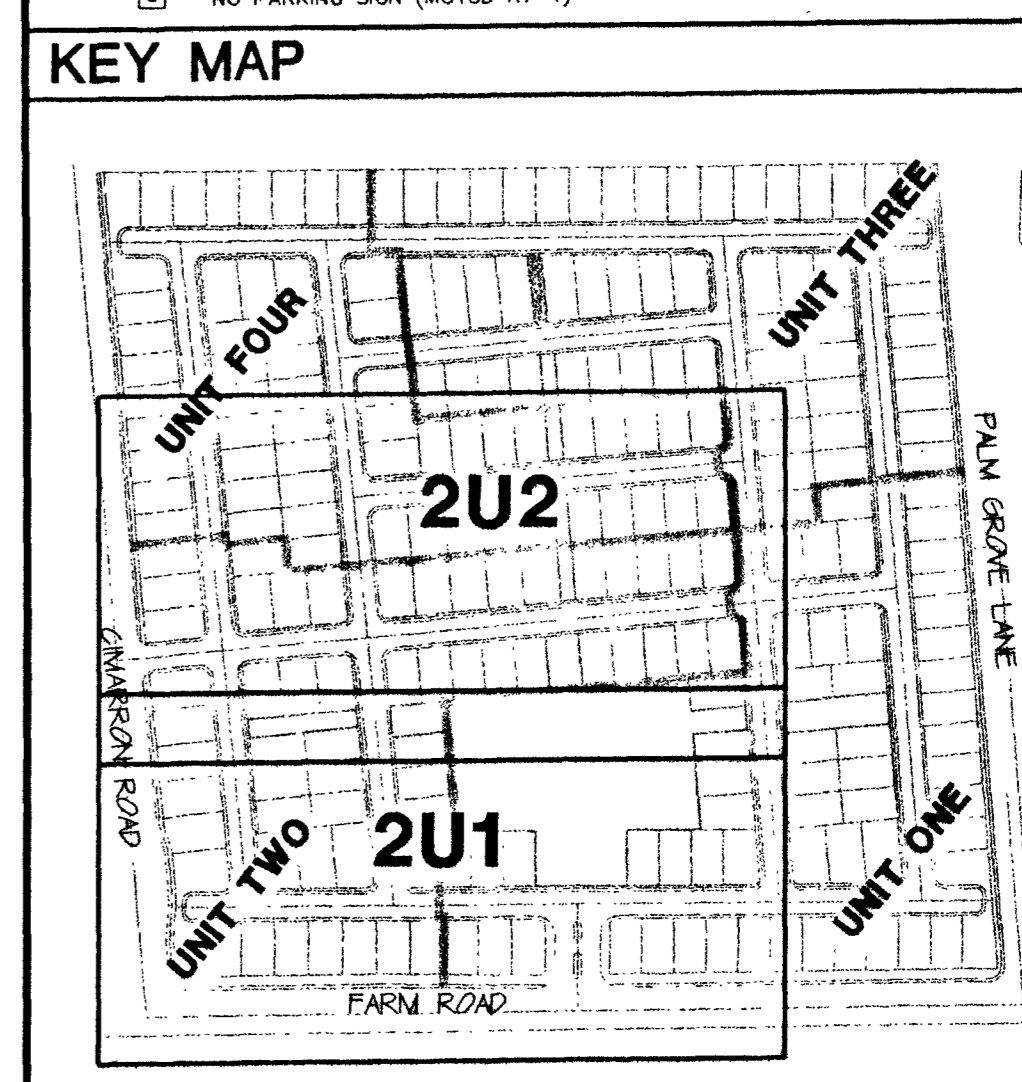


FILE NAME: 921102IMP.dwg  
VIEW NAME: 2MU1



LEGEND	
EXISTING STREET LIGHT	
NEW STREET LIGHT (UNLESS NOTED AS EXISTING)	
TRAFFIC SIGNAL W/ STREET LIGHT	
SERVICE POINT AND ROOC	
PHOTO EYE	
ELECTRICAL PEDESTAL	
PULL BOX AS SHOWN	
GATE VALVE	
EXISTING FIRE HYDRANT	
NEW FIRE HYDRANT (UNLESS NOTED AS EXISTING)	
BACKWATER VALVE	
SEWER MANHOLE	
EXISTING SEWER MANHOLE	
STORM DRAIN MANHOLE	
SEWER AND WATER SERVICE	
STREET NAME SIGN	
STOP SIGN	
STOP SIGN	
FUTURE IMPROVEMENTS	
EX. IMPROVEMENTS	
UNIT LINE	
SEWER	
WATER	
3" INTERCONNECT CONDUIT	
1 1/4" STREET LIGHT CONDUIT	

- CONSTRUCTION NOTES**
- 1 8" WATER WITH 12" DUCTILE IRON PIPE
  - 2 8" GATE VALVE
  - 3 8" TEE
  - 4 8" CROSS
  - 5 8" 90°
  - 6 STD. F.H. ASSY. W/ 8"x8"x6" TEE, 6" GV AND LATERAL PER UDACS PLATE #7
  - 7 CAP & 2" BLOWOFF VALVE PER UDACS PLATE #4
  - 8 2 - 4" IRRIGATION CONDUITS
  - 9 12"x12" 8" MECHANICAL TAPPING TEE AND 8" TAPPING GATE VALVE
  - 10 8" GATE VALVE, 10 LF 8" PVC W. 2" BLOWOFF AND CAP
  - 11 8"x8"x8" MECHANICAL JOINT TAPPING SLEEVE AND VALVE
  - 12 EDGE OF ROAD MARKER (MUTCD 6M3R)
  - 13 STOP SIGN (MUTCD R1-1)
  - 14 4" WHITE, COLO POLYMER EDGE LINE
  - 15 STREET NAME SIGN (MUTCD D3)
  - 16 25 MPH SPEED LIMIT SIGN (MUTCD R2)
  - 17 4" SOLID YELLOW CL (MUTCD 3A-7 #5)
  - 18 4" BROKEN YELLOW SINGLE CL (MUTCD 3A-7 #2)
  - 19 PAINT FIRE LANE CURB RED
  - 20 NO PARKING SIGN (MUTCD R7-1)



**APPROVAL BLOCK**

CITY FIRE MARSHAL	DATE
<i>[Signature]</i>	12/15/10
LAS VEGAS VALLEY WATER DISTRICT	DATE
SEE SHEET 201	
SOUTHWEST GAS	DATE
<i>[Signature]</i>	12/7/10
NEVADA POWER COMPANY	DATE
<i>[Signature]</i>	12-08-20
SPRINT	DATE

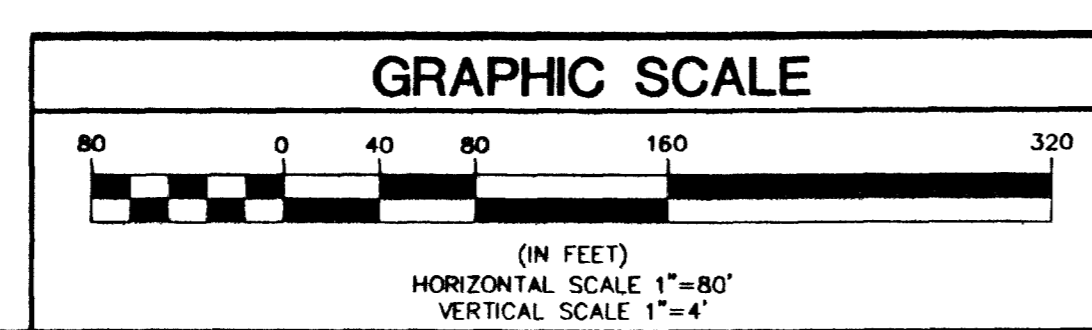
**NOTICE!**

EXISTING UTILITIES ARE SHOWN ON PLANS FOR THE CONVENIENCE OF THE CONTRACTOR ONLY. THE CONTRACTOR IS RESPONSIBLE FOR THE PROTECTION OF ALL UTILITIES. THE ENGINEER BEARS NO RESPONSIBILITY FOR UTILITIES NOT SHOWN OR SHOWN INCORRECTLY.

**Call Before You Dig**

1-800-227-2600  
UNDERGROUND SERVICE (USA)

AVOID CUTTING UNDERGROUND UTILITIES. IT'S COSTLY.



**BASIS OF BEARINGS**

THE BASIS OF BEARINGS FOR THIS SURVEY IS THE EAST LINE OF THE NORTHEAST ONE-QUARTER OF SECTION 16, TOWNSHIP 19 SOUTH, RANGE 60 EAST, M.D.M. WHICH BEARS NORTH 00°19'37" EAST AS SHOWN IN THE OFFICE OF THE CLARK COUNTY, NEVADA RECORDER IN BOOK 79 OF PLATS ON PAGE 50.

**BENCHMARK**

CITY OF LAS VEGAS BENCHMARK No. 5 STATION 1LV90-16NW6  
USE AND CS BM # 11618  
764.7181 METERS (NAVD 88)  
764.7181 x (3937/1200) = 2508.913 FEET (NAVD 88)

REVISION	BY	DATE
<p><b>CARINA CORPORATION</b> 2880 BUSINESS PARK COURT, SUITE 210 LAS VEGAS, NEVADA 89128 (702) 228-6376</p>		
<p><b>ALPHA &amp; COMPANY</b> ENGINEERING COMPANY 50 So. Jones #202, Las Vegas, NV 89107 Telephone: (702) 877-1500</p>		
<p><b>MASTER UTILITY PLAN</b></p>		
<p><b>LAMPLIGHT VILLAGE AT CENTENNIAL SPRINGS UNIT 2</b></p>		
SHEET	TITLE	SCALE:
11.29.00	11.29.00	1"=40'
DRAWN BY:	DESIGNED BY:	CHECKED BY:
CP	CP	EFT
PROJECT NO:	9211-02	
<p>PROFESSIONAL ENGINEER STATE OF NEVADA STEPHEN R. CARROLL No. 13589 11.30.00</p>		
<p>SHEET <b>2MU1</b> 8 OF 17 SHEETS DRAWING NO. 307Y-4642-2</p>		