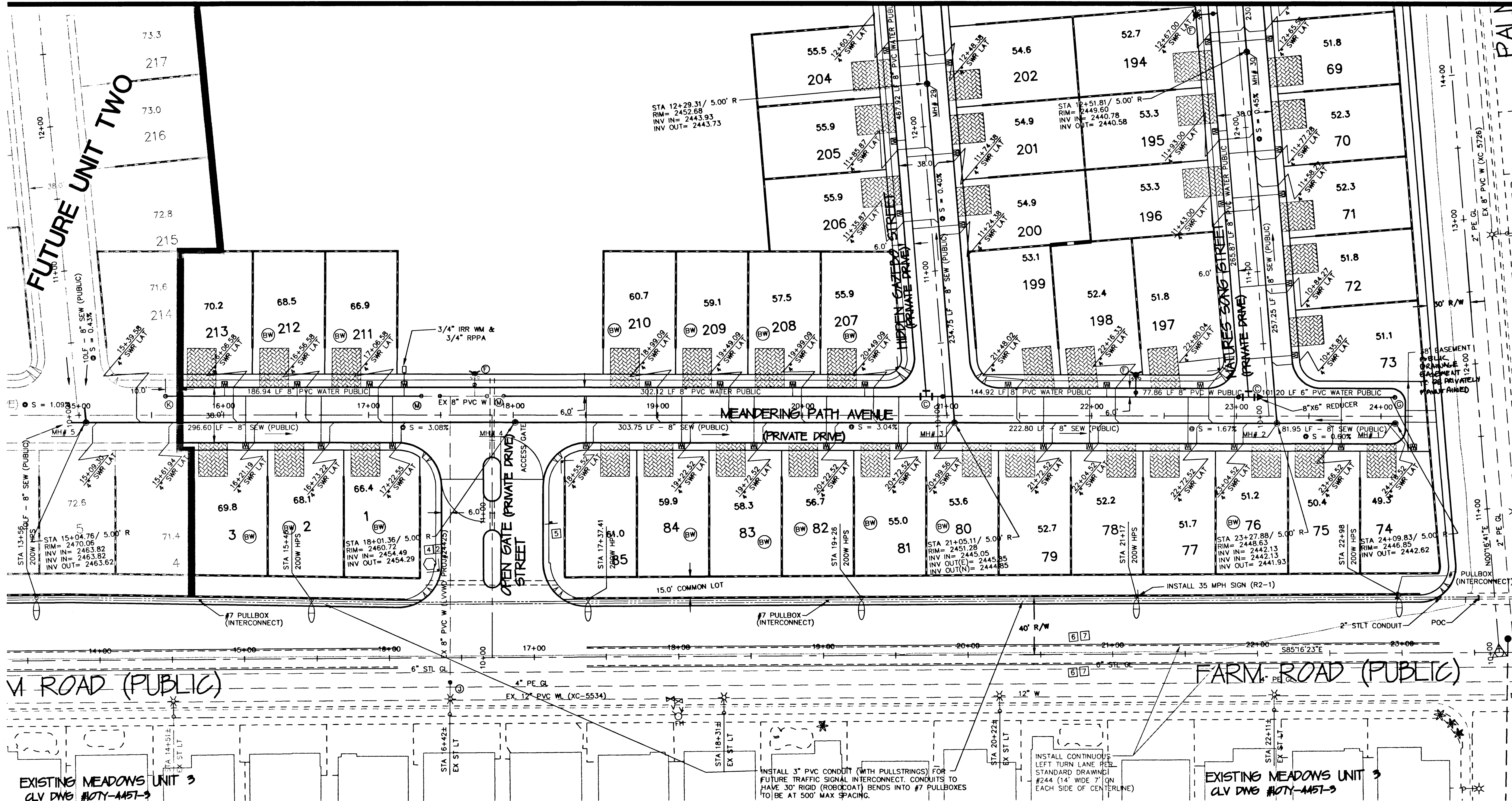


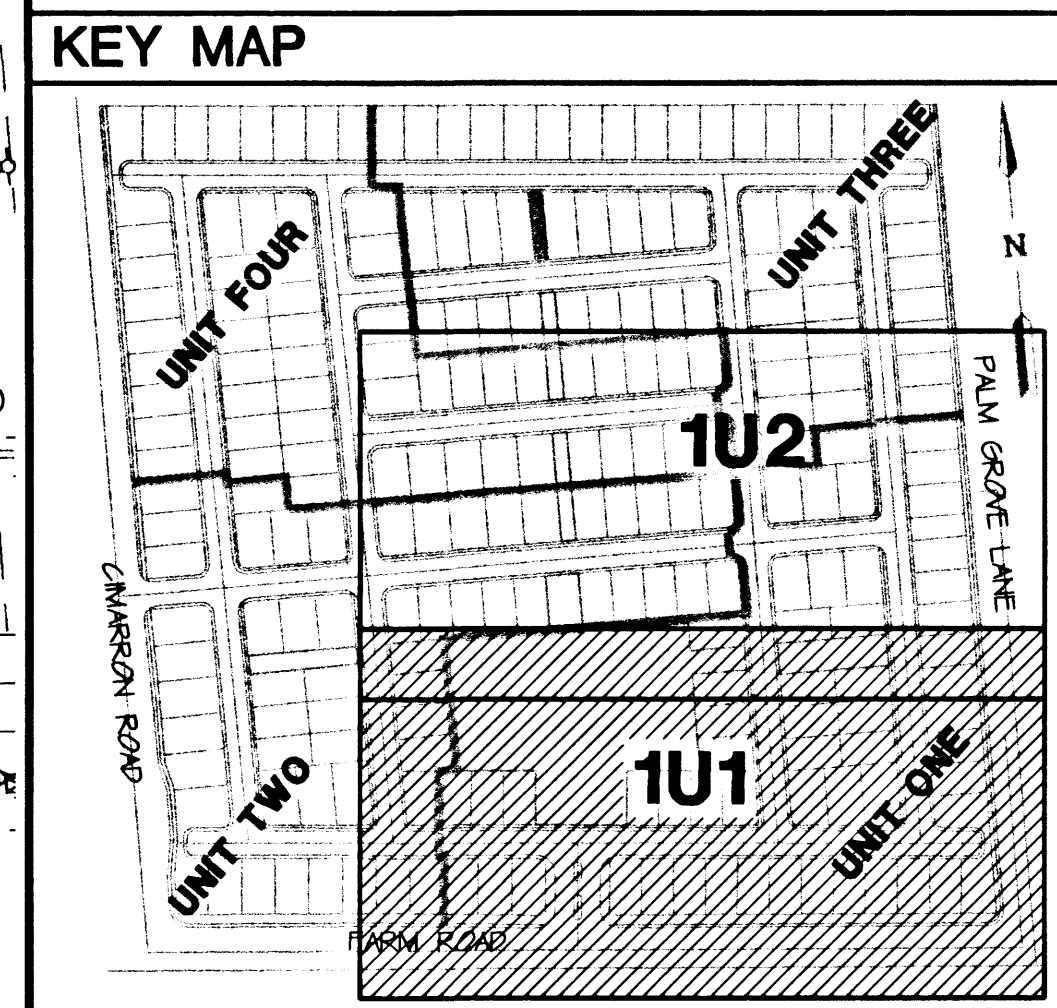
FOR CONTINUATION SEE SHEET 1U2



LEGEND

EXISTING STREET LIGHT	
EXISTING STREET LIGHT (UNLESS NOTED AS EXISTING)	
TRAFFIC SIGNAL W/ STREET LIGHT	
SERVICE POINT AND ROCC	
PHOTO EYE	
ELECTRICAL PEDESTAL	
PULL BOX AS SHOWN	
GATE VALVE	
EXISTING FIRE HYDRANT	
NEW FIRE HYDRANT (UNLESS NOTED AS EXISTING)	
BACKWATER VALVE	
SEWER MANHOLE	
EXISTING SEWER MANHOLE	
STORM DRAIN MANHOLE	
SEWER AND WATER SERVICE	
STREET NAME SIGN	
STREET SIGN	
STOP SIGN	
FUTURE IMPROVEMENTS	
EX. IMPROVEMENTS	
UNIT LINE	
SEWER	
WATER	
3" INTERCONNECT CONDUIT	
1 1/4" STREET LIGHT CONDUIT	

- CONSTRUCTION NOTES**
- 8" WATER WITH 12" DUCTILE IRON PIPE
 - 8" GATE VALVE
 - 8" TEE
 - 8" CROSS
 - 8" 90°
 - STD. F.H. ASSY. W/ 8"x8"x6" TEE, 6" GV AND LATERAL PER UDACS PLATE #7
 - 2 - 4" IRRIGATION CONDUITS
 - 12"x12"x8" MECHANICAL TAPPING TEE AND 8" TAPPING GATE VALVE
 - 8" GATE VALVE, 10 LF 8" PVC W, 2" BLOWOFF AND CAP
 - 8"x8"x8" MECHANICAL JOINT TAPPING SLEEVE AND VALVE
 - REMOVE TEMP BLOWOFF AND CAP AND CONNECT
 - EDGE OF ROAD MARKER (W-8(L))
 - STOP SIGN (MUTCD R1-1)
 - 4" WHITE COLD POLYMER EDGE LINE
 - STREET NAME SIGN (MUTCD D3)
 - 25 MPH SPEED LIMIT SIGN (MUTCD R2)
 - 4" SOLID YELLOW CL (MUTCD 3A-7 #6)
 - 4" BROKEN YELLOW SINGLE CL (MUTCD 3A-7 #2)
 - PAINT FIRE LANE CURB RED
 - NO PARKING SIGN (MUTCD R7-1)



APPROVAL BLOCK

CITY FIRE MARSHAL	DATE: 5-21-00
LAS VEGAS VALLEY WATER DISTRICT	DATE:
SOUTHWEST GAS	DATE: 5-25-00
NEVADA POWER COMPANY	DATE:
SPRINT	DATE:

NOTICE!

EXISTING UTILITIES ARE SHOWN ON PLANS FOR THE CONVENIENCE OF THE CONTRACTOR ONLY. THE CONTRACTOR IS RESPONSIBLE FOR THE PROTECTION OF ALL UTILITIES. THE ENGINEER BEARS NO RESPONSIBILITY FOR UTILITIES NOT SHOWN OR SHOWN INCORRECTLY.

1-800-227-2600
UNDERGROUND SERVICE (USA)

Call Djs BEFORE YOU Dig

CARINA CORPORATION
2880 BUSINESS PARK COURT, SUITE 210
LAS VEGAS, NEVADA 89128
(702) 228-6376

ALPHA & COMPANY
ENGINEERING COMPANY
50 So. Jones #202, Las Vegas, NV 89107
Telephone: (702) 877-1300

UTILITY PLAN

LAMPLIGHT VILLAGE AT CENTENNIAL SPRINGS

UNIT 1

APPROVAL BLOCK

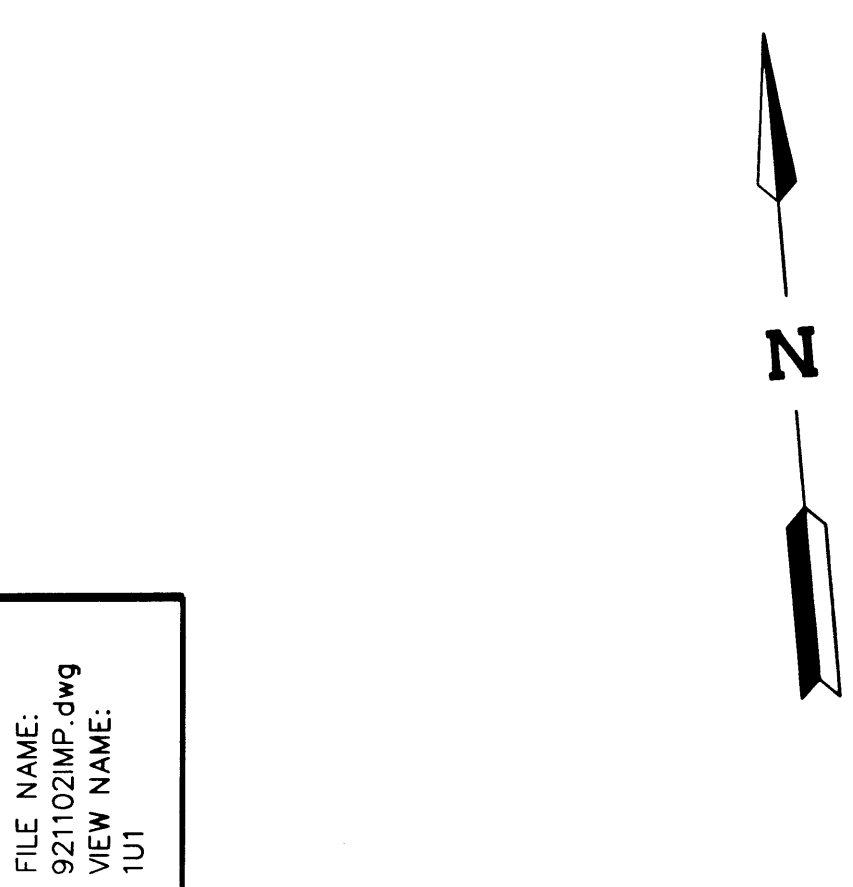
DRAWN BY: CP	DATE: 5-15-00
DESIGNED BY: CP	DATE: 5-15-00
CHECKED BY: EFT	DATE: 5-15-00
PROJECT NO: 9211-02	SCALE: 1"=40'

PROFESSIONAL ENGINEER

EDWARD F. TANEY
CIVIL
No. 9903

5-25-00

SHEET 1U1
9 OF 21 SHEETS
DRAWING NO. 1074-4642-1



GRAPHIC SCALE

40 0 20 40 80 160

(IN FEET)

HORIZONTAL SCALE 1"=40'

VERTICAL SCALE 1"=4'

BASIS OF BEARINGS

THE BASIS OF BEARINGS FOR THIS SURVEY IS THE EAST LINE OF THE NORTHEAST ONE-QUARTER OF SECTION 16, TOWNSHIP 19 SOUTH, RANGE 60 EAST, M.D.M. WHICH BEARS NORTH 00°19'37" EAST AS SHOWN IN THE OFFICE OF THE CLARK COUNTY, NEVADA RECORDER IN BOOK 79 OF PLATS ON PAGE 50.

BENCHMARK

CITY OF LAS VEGAS BENCHMARK No. 5 STATION 11V90-16NWS
LISC AND OS BM # UTILS.
764.7181 METERS (NAVD 88)
764.7181 x (3937/1200) = 2508.913 FEET (NAVD 88)

NOTE:
ALL INTERIOR STREETS ARE PRIVATE DRIVES. PRIVATE DRIVES ARE PUBLIC UTILITY EASEMENTS AND PUBLIC DRAINAGE EASEMENTS TO BE PRIVATELY MAINTAINED.