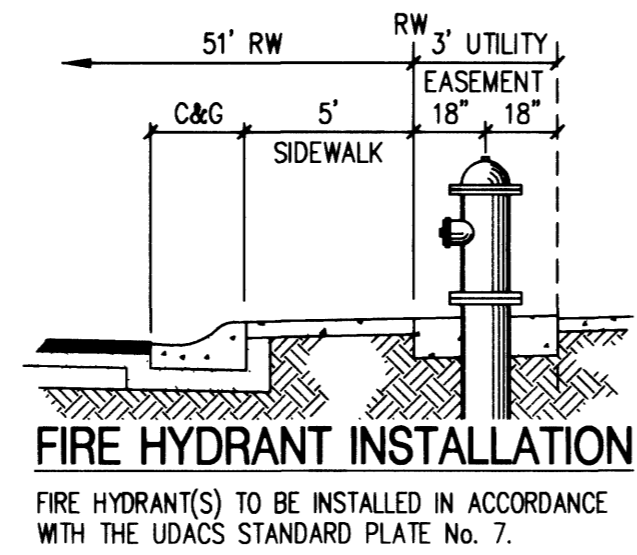
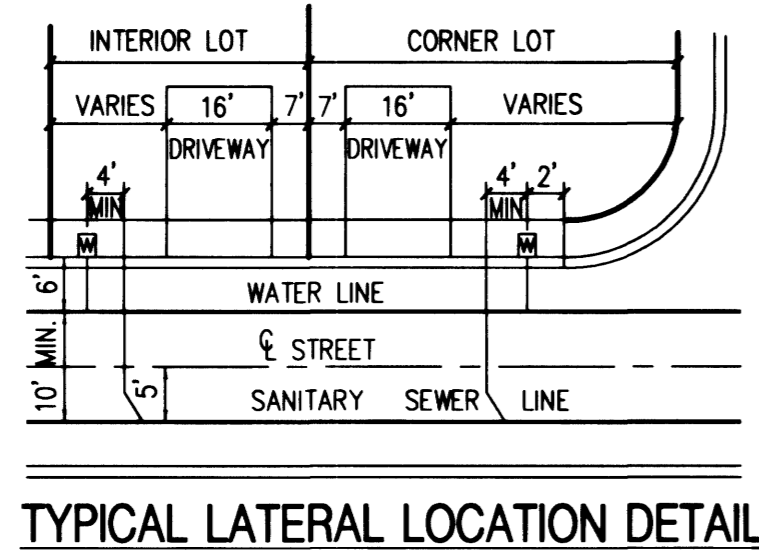


DISCLAIMER NOTE:

UTILITY LOCATIONS SHOWN HEREON ARE APPROXIMATE ONLY. IT SHALL BE THE CONTRACTOR'S RESPONSIBILITY TO DETERMINE THE EXACT HORIZONTAL AND VERTICAL LOCATION OF ALL EXISTING UNDERGROUND OR OVERHEAD UTILITIES PRIOR TO COMMENCING CONSTRUCTION. NO REPRESENTATION IS MADE THAT ALL EXISTING UTILITIES ARE SHOWN HEREON. THE ENGINEER ASSUMES NO RESPONSIBILITY FOR UTILITIES NOT SHOWN OR UTILITIES NOT SHOWN IN THEIR PROPER LOCATION. CONTRACTOR TO NOTIFY ENGINEER OF ANY CHANGES OR DISCREPANCIES.

Avoid cutting underground utility lines. It's costly.
Call you before you Dig
1-800-227-2600
UNDERGROUND SERVICE (USA)

Avoid overhead power line contact.
Call you before you Overhead
1-702-593-6111
NATIONAL POWER CONSULTANTS
AND SAFETY SERVICES DEPARTMENT



R.P.P.A. NOTE (1) - 1'

APPROVED REDUCED PRESSURE PRINCIPAL ASSEMBLY(S) SHALL BE INSTALLED PER THE UDACS PLATE NO. 11A. NO WATER SHALL BE TAKEN FROM A SERVICE REQUIRING BACKFLOW PREVENTION UNTIL THE REDUCED PRESSURE PRINCIPAL ASSEMBLY HAS BEEN SUCCESSFULLY TESTED BY THE L.V.V.W.D.

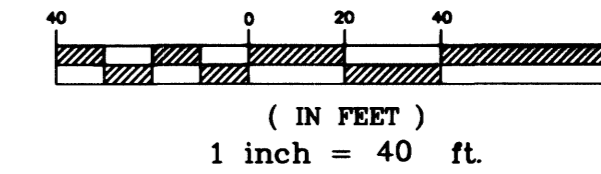
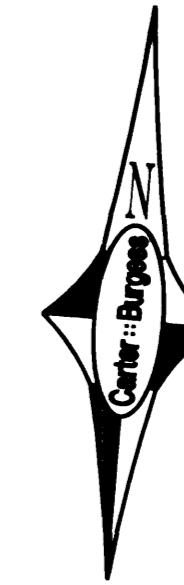
ANY BLOCK WALL OR OTHER FENCE MATERIAL SHALL BE DESIGNED AND CONSTRUCTED AROUND THE OUTSIDE OF THE EASEMENT(S) TO ALLOW THE DISTRICT DIRECT ACCESS FROM THE ADJACENT RIGHT-OF-WAY.

BASIS OF BEARING

NORTH 00°00'59" EAST - BEING THE CENTERLINE OF BRADLEY ROAD FROM ANN ROAD TO TROPICAL PARKWAY, CITY OF LAS VEGAS, CLARK COUNTY, NEVADA, AS SHOWN PER BOOK 77, PAGE 26 OF PLATS ON FILE IN THE CLARK COUNTY, NEVADA, RECORDER'S OFFICE, OFFICIAL RECORDS.

BENCHMARK

CITY OF LAS VEGAS BENCHMARK No. 23, STATION 1LV9025M4, ALUMINUM CAP ON REBAR, P.L.S. No. 6201, CENTENNIAL PKWY. & BRADLEY ROAD.
ELEVATION = 2302.773 FEET (701.8865 METERS) NAVD88.



CONSTRUCTION NOTES

- ① INSTALL FIRE HYDRANT ASSEMBLY PER UDACS PLATE #7.
- ② INSTALL 8" x 8" x 8" TEE PER PLATE #5.
- ③ INSTALL 8" GATE VALVE PER UDACS PLATE #3.
- ④ INSTALL 6" CAP & 2" BLOW OFF ASSEMBLY PER UDACS PLATE #4.
- ⑤ INSTALL 3/4" WATER METER (TYP.) PER UDACS PLATE #1-B. (84)
- ⑥ INSTALL 1" R.P.P.A. PER UDACS PLATE #11A. (2)
- ⑦ INSTALL 1" WATER METER PER UDACS PLATE #1-D. (2)
- ⑧ INSTALL 2-4" IRRIGATION SLEEVES.
- ⑨ WATER POINT OF CONNECTION REMOVE CAP & BLOWOFF ASSEMBLY & CONNECT TO EXISTING 8" PVC STUB
- ⑩ INSTALL 8" x 6" REDUCER PER UDACS PLATE #3.
- ⑪ INSTALL 8" x 8" x 6" TEE PER UDACS PLATE #5.
- ⑫ INSTALL 8" 90° ELBOW PER UDACS PLATE #5.
- ⑬ INSTALL 8" 45° ELBOW PER UDACS PLATE #5.
- ⑭ INSTALL 10" x 10" x 8" TEE PER PLATE #5.
- ⑮ INSTALL 8" CAP & 2" BLOW OFF ASSEMBLY PER UDACS PLATE #4.
- ⑯ INSTALL 10" GATE VALVE PER UDACS PLATE #3.
- ⑰ INSTALL 10" CAP & 2" BLOW OFF ASSEMBLY PER UDACS PLATE #4.
- ⑱ WATER POINT OF CONNECTION REMOVE CAP & BLOWOFF ASSEMBLY & CONNECT INTO EXISTING 10" STUB
- ⑳ SEWER POINT OF CONNECTION: INSTALL 48" MANHOLE PER D.C.S.W.C.S. DETAIL SD-1.
- ㉑ INSTALL 48" MANHOLE PER D.C.S.W.C.S. DETAIL SD-1.
- ㉒ INSTALL 4" PVC SEWER LATERAL.

LEGEND

- LOT NUMBER 129
- SEWER MANHOLE W/ SEWER LINE
- TOP SEWER MANHOLE

FIRE FLOW DATA

FIRE FLOW REQUIREMENT IS 1500 GALLONS PER MINUTE AT 20 P.S.I. (POUNDS PER SQUARE INCH) RESIDUAL.

BASED ON SQUARE FOOTAGE AREA	2163
LARGEST AREA BETWEEN AREA SEPARATION	N/A
HEIGHT	ONE STORY
TYPE OF CONSTRUCTION	5N
EXPOSURES	10' MIN.
SPRINKLER SYSTEM	NONE
OCCUPANCY	SINGLE FAMILY
ROOF CONSTRUCTION	TILE

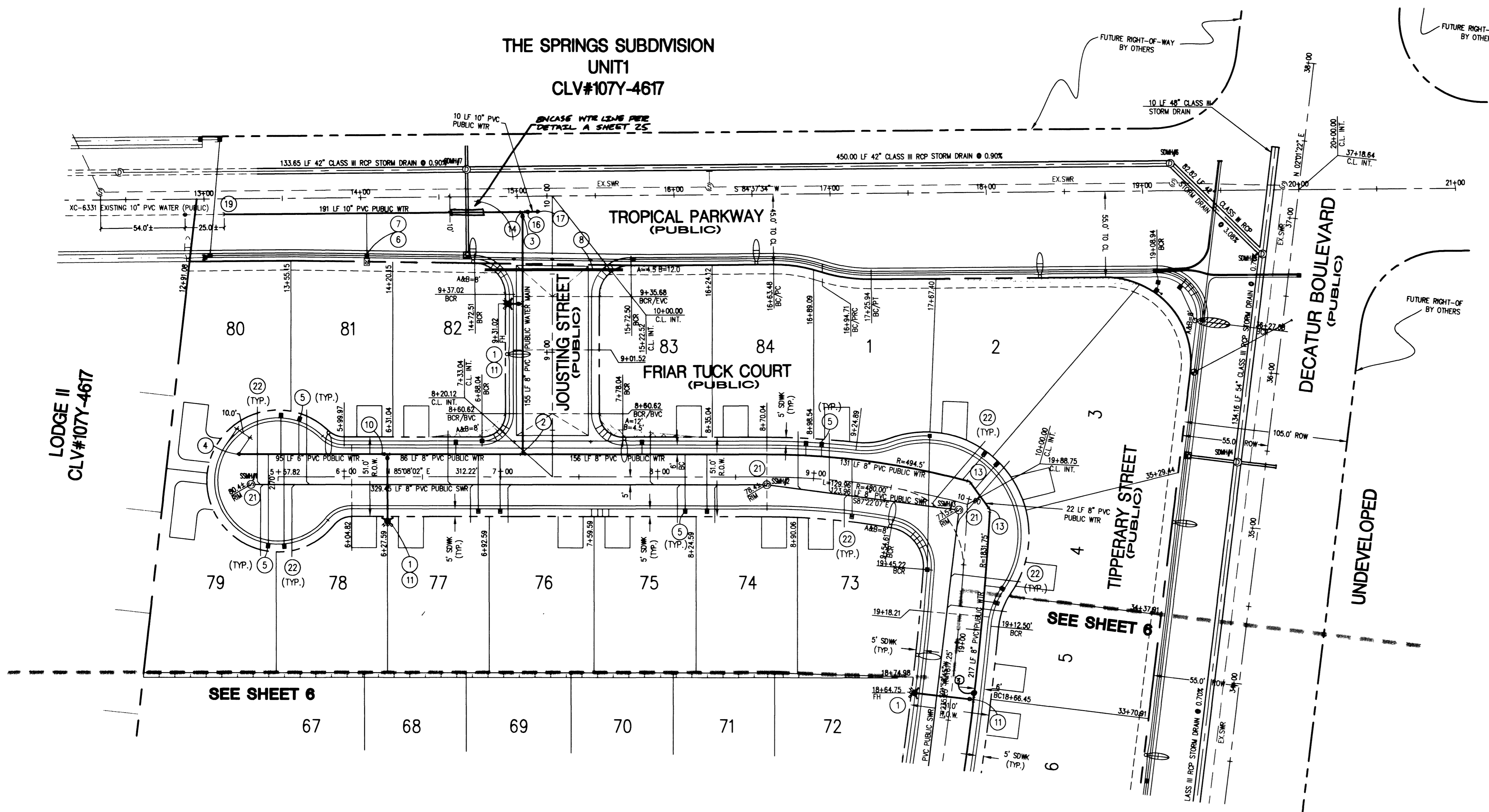
APPROVAL

Mark J. Fakler 8/27/01
LAS VEGAS VALLEY WATER DISTRICT DATE

APPROVAL

Mark J. Fakler 9/16/11
LAS VEGAS VALLEY WATER DISTRICT DATE

**THE SPRINGS SUBDIVISION
UNIT I
CLV#107Y-4617**



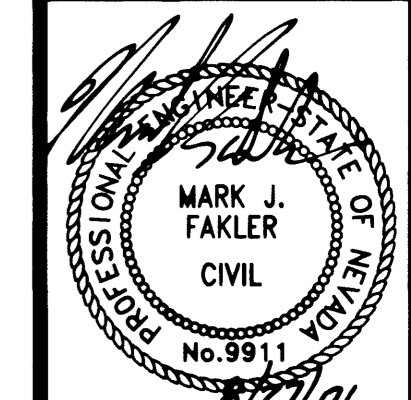
PLASTER DEVELOPMENT COMPANY, INC.
801 SOUTH RANCHO DRIVE, QUAIL PARK I, SUITE E-4
LAS VEGAS, NV 89106
(702) 365-5031

Carter Burgess
6655 Bermuda Road
Las Vegas, NV 89119
(702) 898-5400 Fax (702) 898-5454
Consultants in Planning, Engineering,
Construction Management, and Related Services

UTILITY PLAN

**LOTGE III
PLASTER DEVELOPMENT, INC.**

DRAWN BY: JNC
DESIGNED BY: JUS
CHECKED BY: JNE
PROJECT NO.: 240100



8/27/01
SHEET 7
7 OF 26 SHEETS
DRAWING NO. 3074-4617-3