

- NOTES:
- PUBLIC TRAFFIC CONTROL & STREET LIGHT EASEMENTS SHALL BE PROVIDED ON THE APPROPRIATE SIDE OF THESE PUBLIC STREETS WHERE SUCH ITEMS ARE TO BE INSTALLED AND ARE TO BE MEASURED FROM THE RIGHT-OF-WAY LINE.
  - GRADING SHALL BE IN ACCORDANCE WITH THE SOILS REPORT PREPARED BY TERRACON, PROJECT No. 6402020, DATED MARCH 17, 2000, AND THE APPROVED DRAINAGE STUDY.
  - AT TIME OF GRADING IT IS TO BE DETERMINED IF NATIVE SOIL CAN BE UTILIZED IN PLACE OF TYPE I AGGREGATE BASE.

**PUBLIC RESIDENTIAL STREET (5' ROW)**  
(PER CC STD. DWG. No. 207) NTS

**DISCLAIMER NOTE:**  
UTILITY LOCATIONS SHOWN HEREON ARE APPROXIMATE ONLY. IT SHALL BE THE CONTRACTOR'S RESPONSIBILITY TO DETERMINE THE EXACT HORIZONTAL AND VERTICAL LOCATION OF ALL EXISTING UNDERGROUND OR OVERHEAD UTILITIES PRIOR TO COMMENCING CONSTRUCTION. NO REPRESENTATION IS MADE THAT ALL EXISTING UTILITIES ARE SHOWN HEREON. THE ENGINEER ASSUMES NO RESPONSIBILITY FOR UTILITIES NOT SHOWN OR UTILITIES NOT SHOWN IN THEIR PROPER LOCATION.  
CONTRACTOR TO NOTIFY ENGINEER OF ANY CHANGES OR DISCREPANCIES.

Avoid cutting underground utility lines. If's costly.  
**Call before you Dig**  
1-800-227-2600  
UNDERGROUND SERVICE UTILITIES

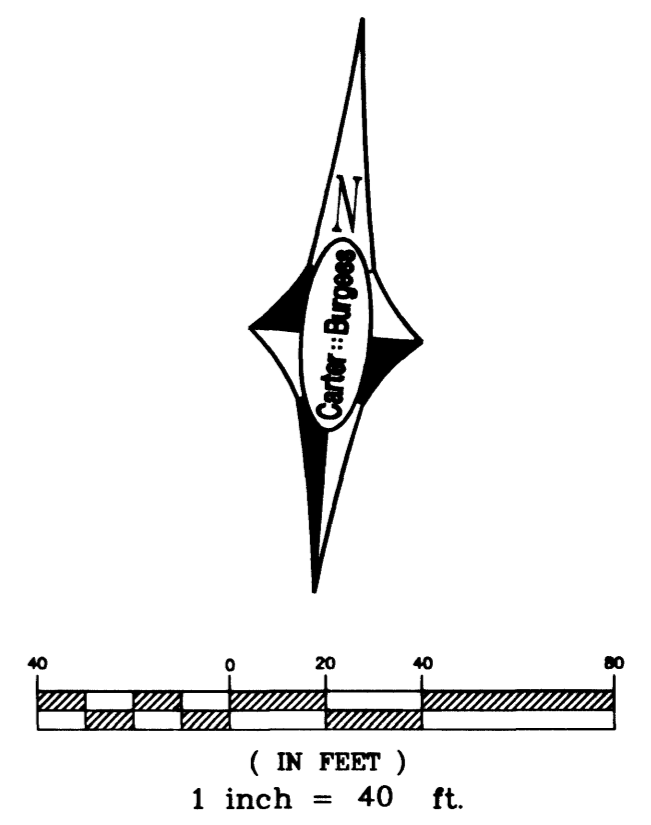
Avoid overhead power line contact.  
**Call before you Overhead**  
1-702-593-6111  
NEVADA POWER CORPORATION AND SAFETY SERVICES DEPARTMENT

- CONSTRUCTION NOTES:**
- CONSTRUCT 24-INCH "L" TYPE CURB AND GUTTER PER CCA STD. DWG. No. 216.
  - CONSTRUCT 5' SIDEWALK PER CCA STD. DWG. No. 234.
  - CONSTRUCT SIDEWALK RAMP PER CCA STD. DWG. No. 235 CASE I.
  - CONSTRUCT 8' VALLEY GUTTER PER CCA STD. DWG. No. 228.
  - CONSTRUCT DROP INLET 4' TYPE "C" PER CCA STD. DWG. # 413.
  - CONSTRUCT 54" CLASS III ROP STORM DRAIN.
  - CONSTRUCT 18" CLASS III ROP STORM DRAIN.
  - CONSTRUCT 18" CLASS III ROP STORM DRAIN.
  - CONSTRUCT 18" CLASS III ROP STORM DRAIN LATERAL AND ENCASE WITH 4" CONCRETE SLURRY PER UDACS 2.19.02 PARAGRAPH B ITEM 3-B.
  - CONSTRUCT SIDEWALK RAMP PER CCA STD. DWG. No. 235.
  - CONSTRUCT 30" SOIL CURB PER CCA STD. DWG. No. 217A.

**BACK OF CURB CURVE TABLE**

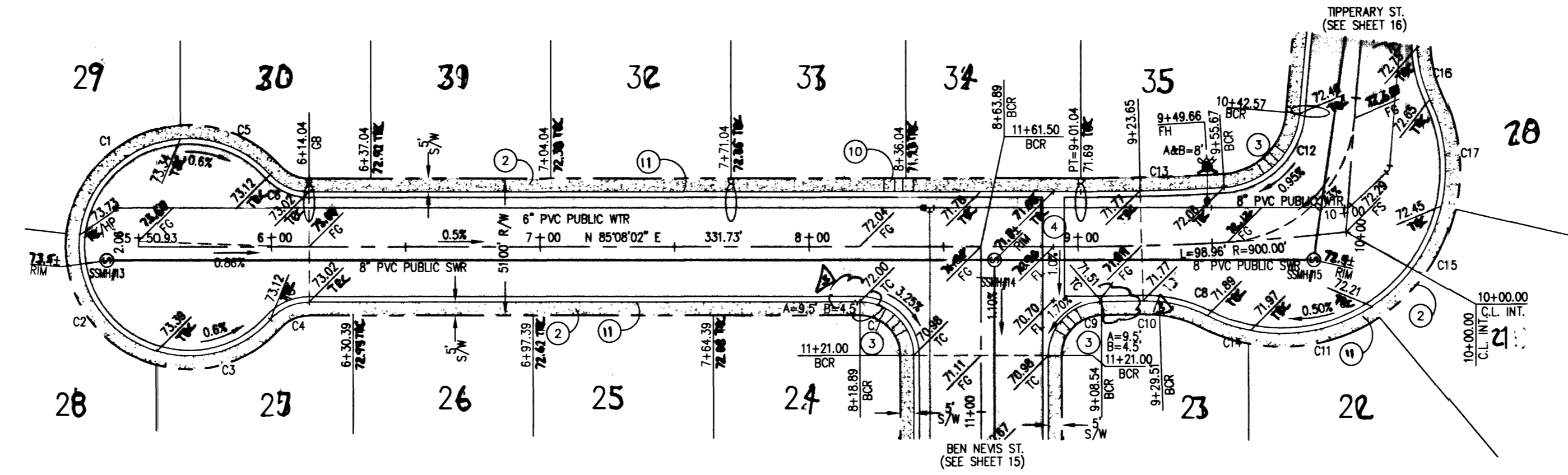
CURVE	RADIUS	LENGTH	TANGENT	DELTA
C1	40.50	56.18	33.67	79°28'48"
C2	40.50	57.40	34.72	81°12'20"
C3	40.50	44.80	25.00	63°22'47"
C4	19.50	16.40	8.72	48°11'23"
C5	40.50	36.98	19.89	52°18'30"
C6	19.50	16.40	8.72	48°11'23"
C7	20.00	31.42	20.00	90°00'00"
C8	50.00	25.48	13.03	29°12'12"
C9	50.00	31.24	19.82	89°29'38"
C10	944.95	21.44	10.72	01°18'00"
C11	56.00	47.45	25.26	48°33'07"
C12	30.00	42.82	25.97	81°46'22"
C13	879.50	53.38	26.70	03°28'39"
C14	56.00	10.88	5.44	11°06'23"
C15	56.00	46.94	24.95	48°01'42"
C16	50.00	27.59	14.15	31°38'38"
C17	56.00	34.95	18.07	35°45'41"

NOTE: ALL DIMENSIONS AND RADIUS ARE FROM BACK OF CURB.

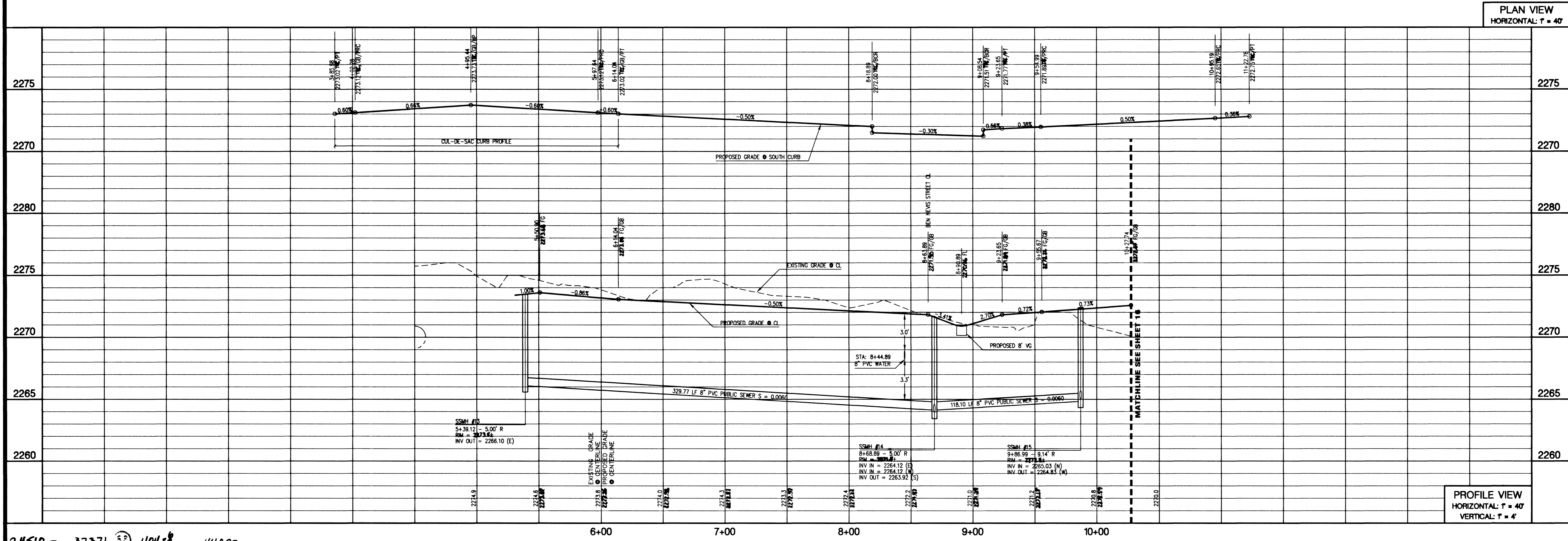


**BASIS OF BEARING**  
NORTH 00°00'59" EAST - BEING THE CENTERLINE OF BRADLEY ROAD FROM ANN ROAD TO TROPICAL PARKWAY, CITY OF LAS VEGAS, CLARK COUNTY, NEVADA, AS SHOWN PER BOOK 77, PAGE 26 OF PLATS ON FILE IN THE CLARK COUNTY, NEVADA, RECORDER'S OFFICE, OFFICIAL RECORDS.

**BENCHMARK**  
CITY OF LAS VEGAS BENCHMARK No. 23, STATION 11V902544, ALUMINUM CAP ON REBAR, P.L.S. No. 6201, CENTENNIAL PKWY. & BRADLEY ROAD.  
ELEVATION = 2302.773 FEET (701.8665 METERS) NAVD83.



**CHARLEMAGNE AVE**  
(PUBLIC)



PLAN VIEW  
HORIZONTAL: T = 40'

PROFILE VIEW  
HORIZONTAL: T = 40'  
VERTICAL: T = 4'

34510 37371 40438 44892

**PLASTER DEVELOPMENT COMPANY, INC.**  
801 SOUTH PANCHO DRIVE, QUAIL PARK I, SUITE E-4  
LAS VEGAS, NV 89106  
(702) 395-5031

**Carter-Burgess**  
6655 Bermuda road  
Las Vegas, NV 89119  
(702) 938-5400 Fax (702) 938-5454  
Consultants in Planning, Engineering, Construction Management, and Related Services

**PLASTER DEVELOPMENT, INC.**  
LODGE III

PLAN AND PROFILE  
CHARLEMAGNE AVE

DRAWN BY: INC  
DESIGNED BY: MAP  
CHECKED BY: M.F.  
PROJECT NO.: 240100  
SCALE: HORIZ. VERT.  
SHEET 17 OF 26 SHEETS  
DRAWING NO. 3074-4617-3

REVISIONS:

NO.	DATE	BY	REVISION
1	7/12/01	M.F.	REVISED PER CITY OF LAS VEGAS
2	7/12/01	M.F.	REVISED PER CITY OF LAS VEGAS
3	7/12/01	M.F.	REVISED PER CITY OF LAS VEGAS
4	7/12/01	M.F.	REVISED PER CITY OF LAS VEGAS

