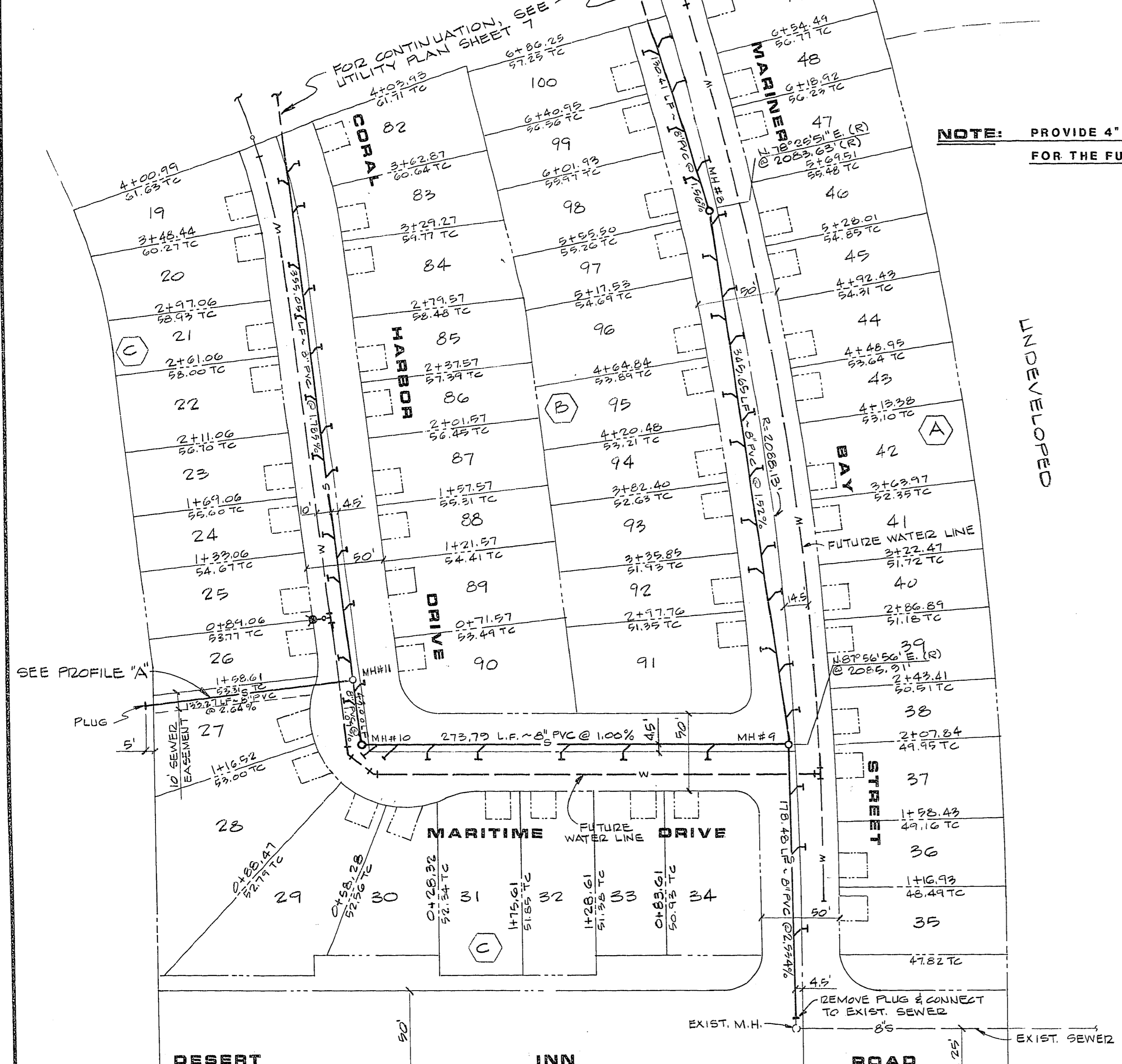


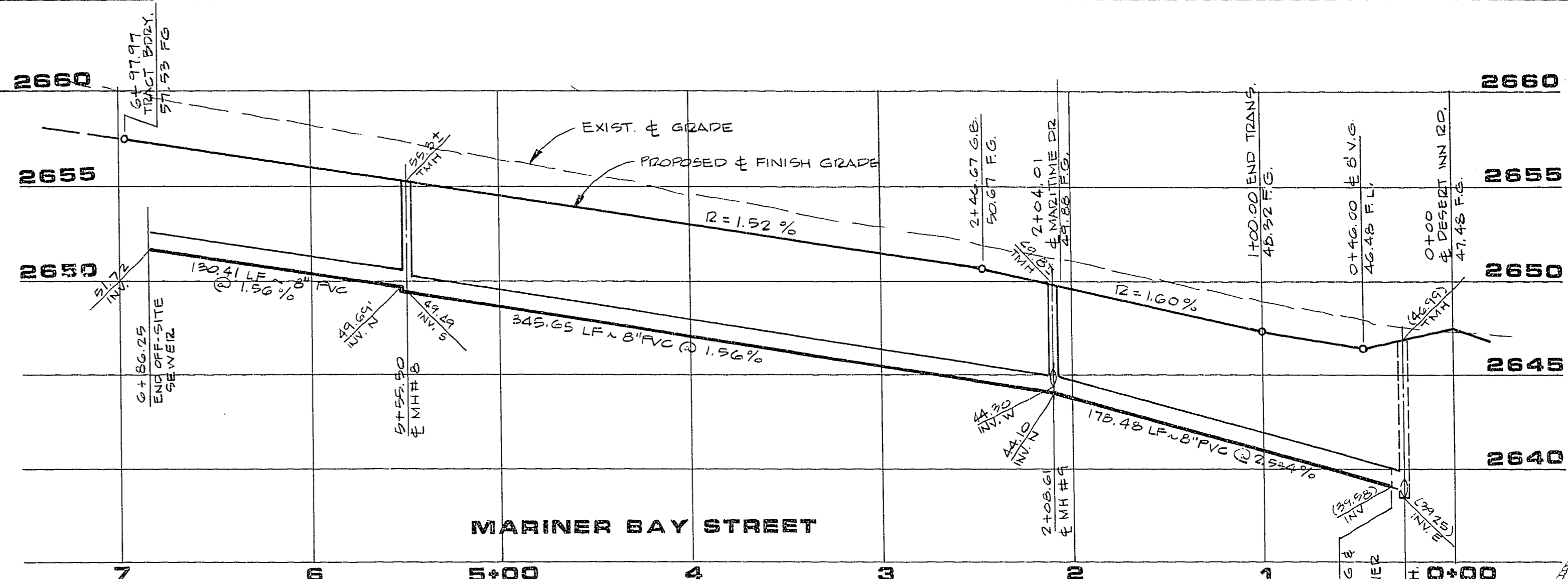
LEWIS HOMES - LAKESIDE NO. 1

R-CL DEVELOPMENT BY AMERICAN WEST

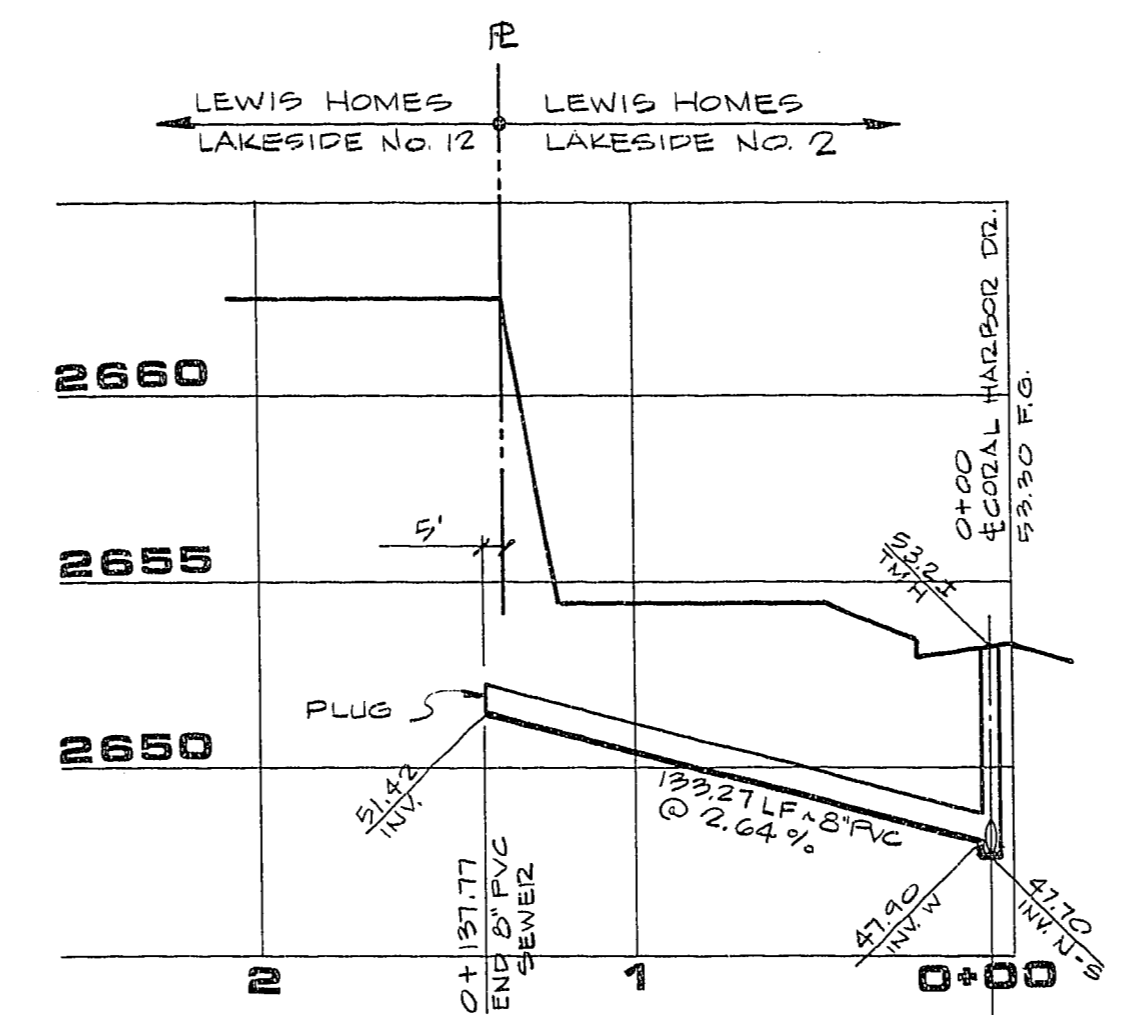


NOTE: PROVIDE 4" SEWER WYE FOR THE FUTURE LOTS.

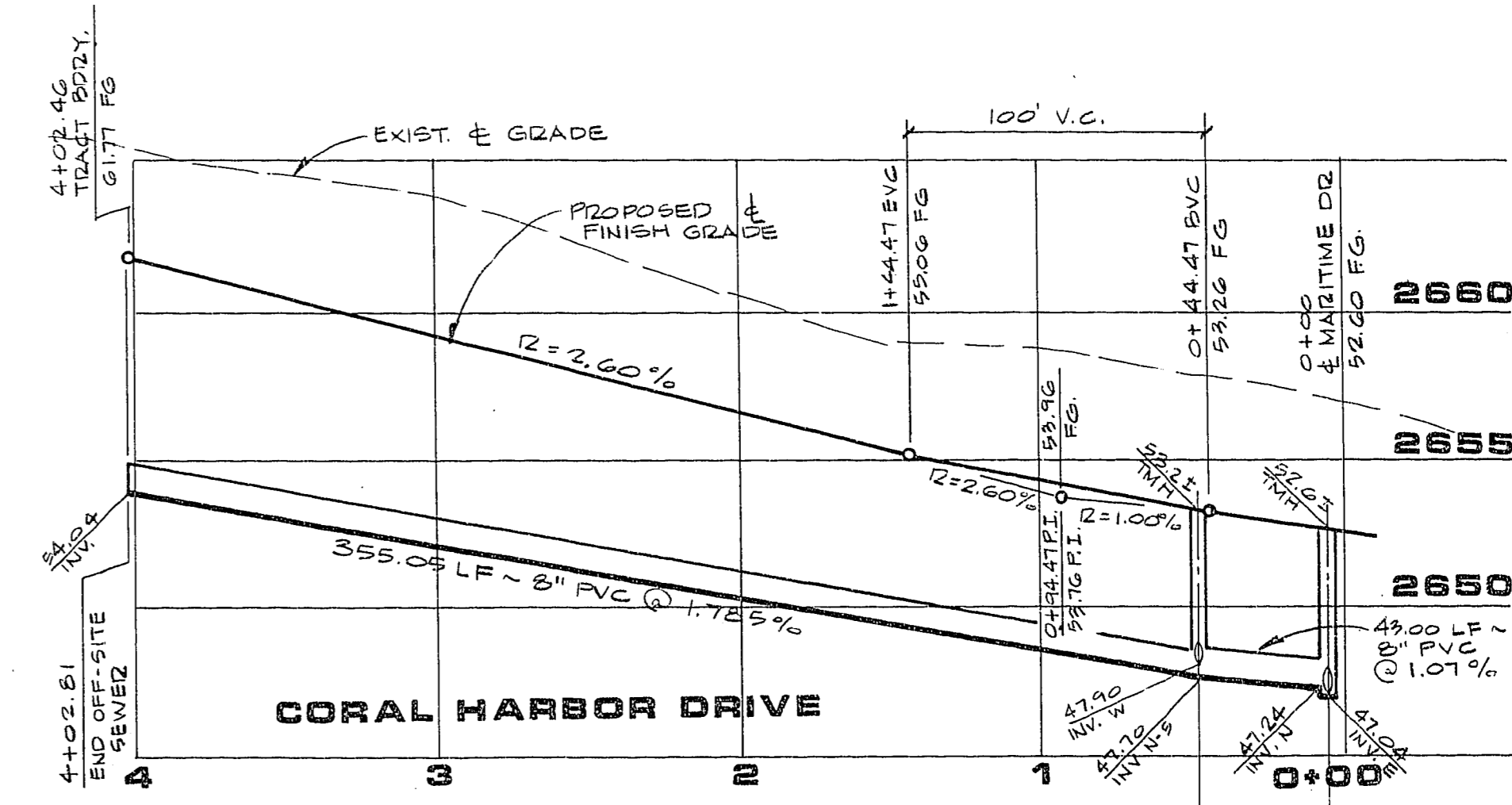
UNDEVELOPED



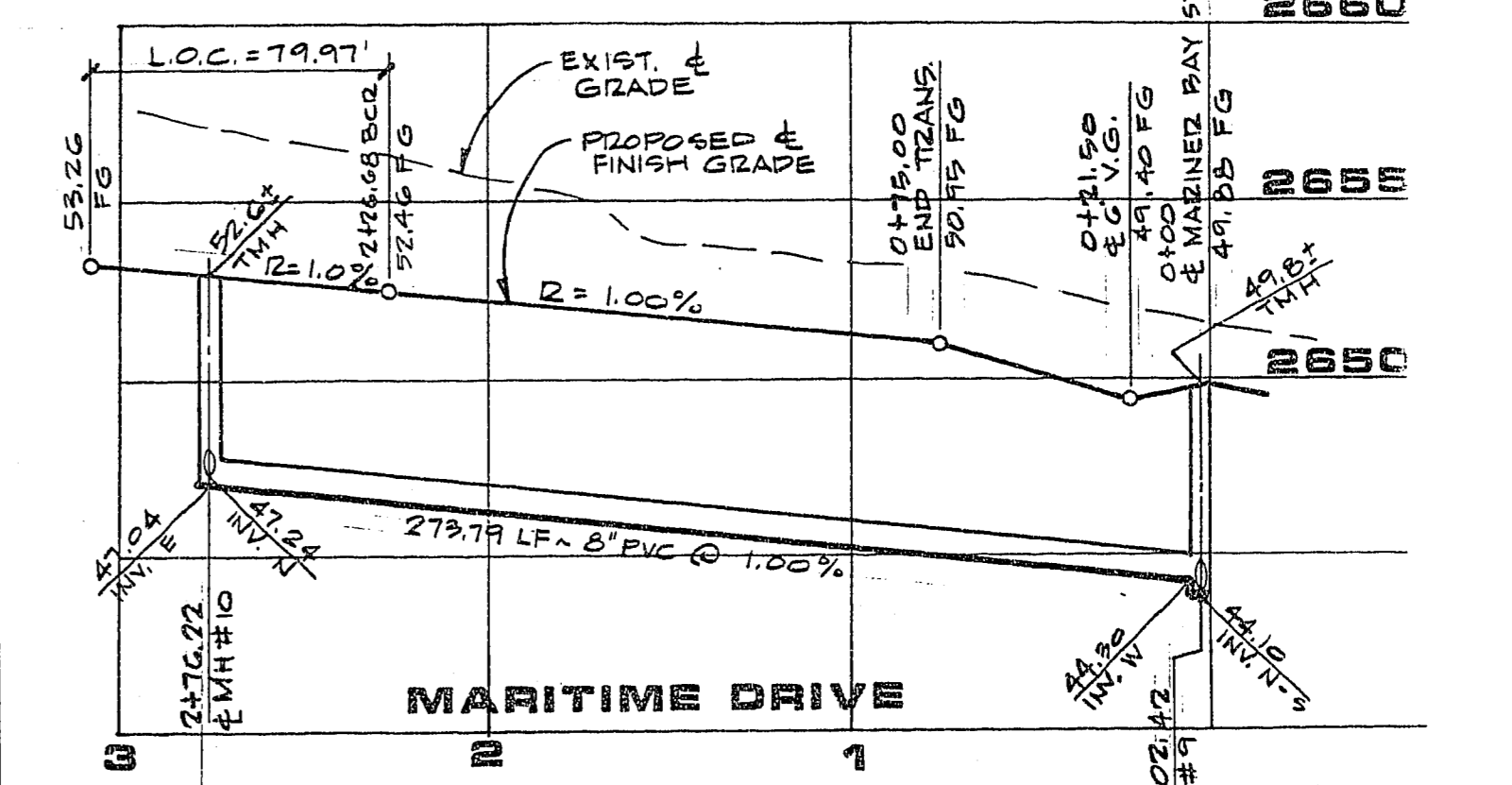
PROFILE
SCALE: HORIZ. 1"=50'
VERT. 1"=5'



PROFILE "A"
SCALE: HORIZ. 1"=50'
VERT. 1"=5'



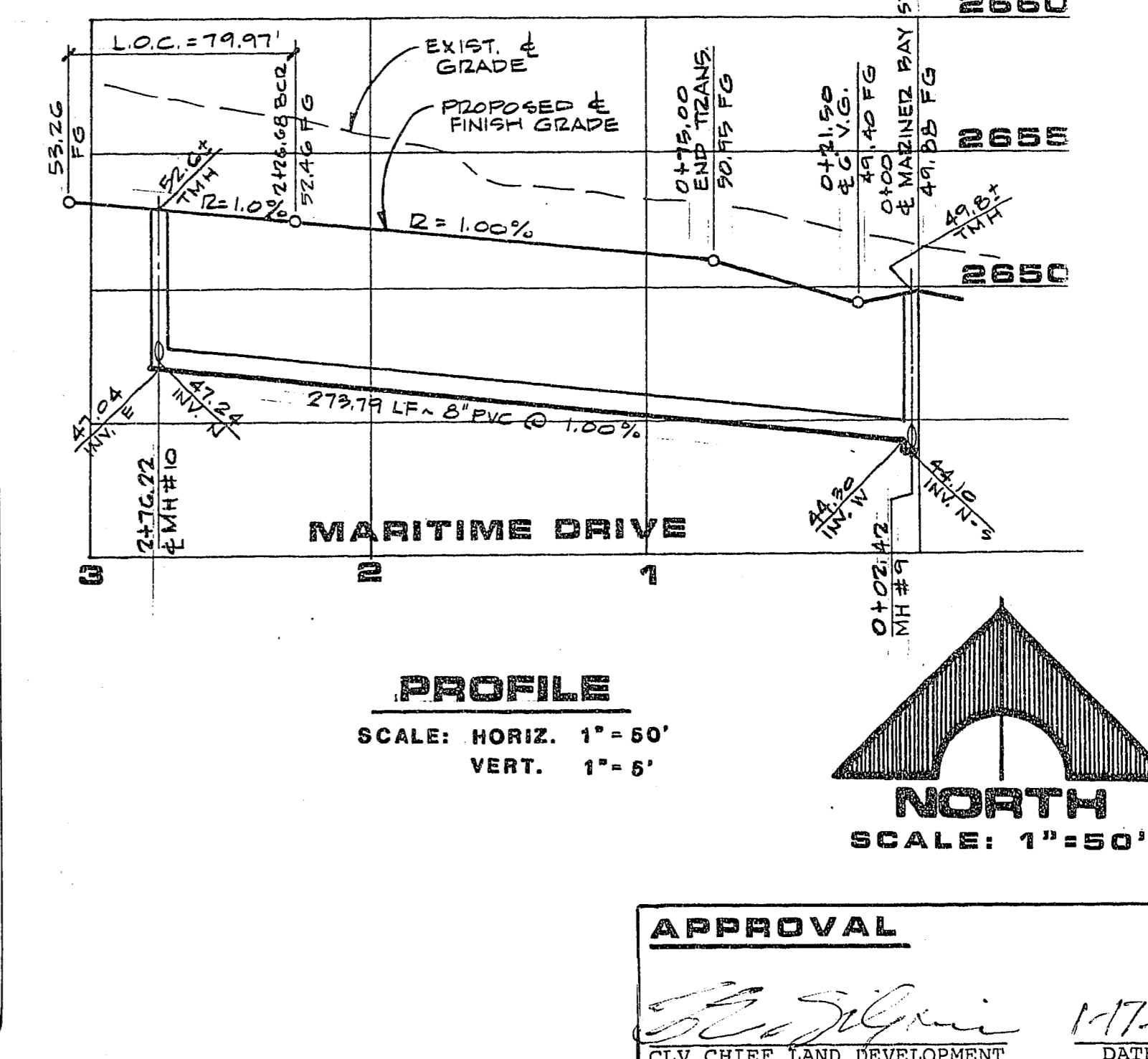
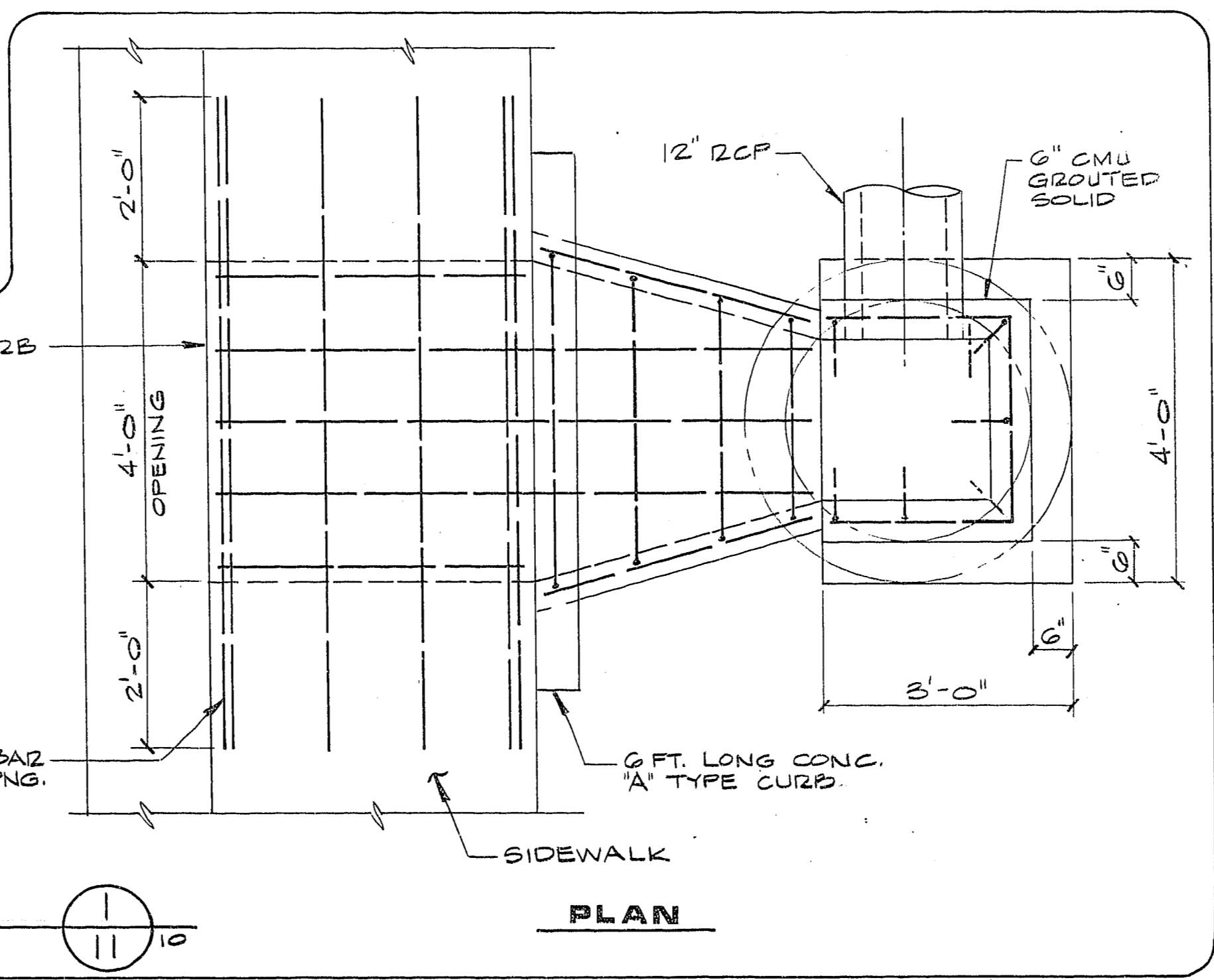
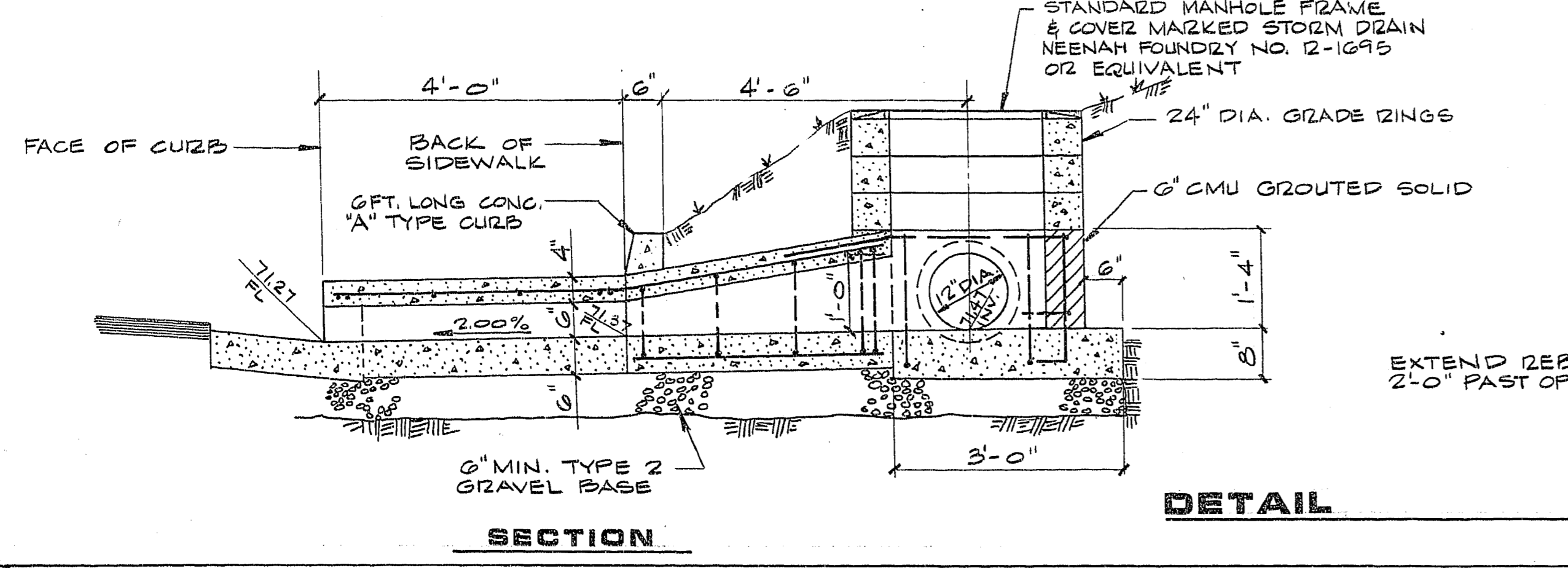
PROFILE
SCALE: HORIZ. 1"=50'
VERT. 1"=5'



PROFILE
SCALE: HORIZ. 1"=50'
VERT. 1"=5'



NOTE: ALL REINFORCING SHOWN ARE #4 REBAR.



DESCRIPTION
DATE
REV
3784 12/1/85
P.E. NO. 7074 TE

STATE OF NEVADA
ENGINEER
G. C. WALLACE
Consulting Engineers, Inc.
1555 South Rainbow Blvd. • Las Vegas, Nevada 89102 • 383-1200

LEWIS HOMES OF NEVADA
LEWIS HOMES - LAKESIDE NO. 1
OFF-SITE SEWER PLAN

SHEET
11
OF 11 SHEETS

JOB NO. 15543.8520

894 DIETRICH-POST 65528

577-168 307Y-2033-1