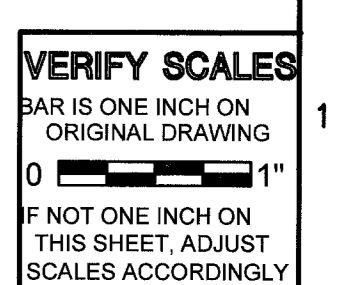


- ### GENERAL NOTES
- THE CONTRACTOR SHALL REFER TO DRAWINGS OF OTHER DISCIPLINES FOR EXACT LOCATIONS OF ALL EQUIPMENT AND DEVICES REQUIRING ELECTRICAL POWER AND/OR CONTROL.
 - ELECTRICAL FLOOR PLANS DO NOT SHOW ALL CONNECTIONS. THE CONTRACTOR SHALL REFER TO ALL ELECTRICAL SCHEMATIC DIAGRAMS & VENDOR SHOP DWGS. FOR ADDITIONAL FIELD WIRING REQUIREMENTS.
 - ALL ELECTRICAL TYPICAL DETAILS SHOWN IN THE SPECIFICATIONS SHALL BE FOLLOWED WHERE APPLICABLE WHETHER SPECIFICALLY REFERRED TO OR NOT.
 - ALL WALL MOUNTED ENCLOSURES SHALL BE INSTALLED AT APPROXIMATELY 5 FEET FROM TOP OF ENCLOSURES TO FINISHED GRADE OR FLOOR UNLESS SPECIFICALLY INDICATED OTHERWISE.
 - ALL CONVENIENCE OUTLETS, LIGHTING SWITCHES, AND MANUAL STARTERS SHALL BE MOUNTED AT 4'-6" (CENTER LINE) ABOVE FINISHED FLOOR.
 - ALL POWER AND LIGHTING CIRCUITS SHALL EACH BE PROVIDED WITH AN INSULATED GREEN GROUND WIRE INSTALLED IN THE SAME CONDUIT AS POWER CONDUCTORS.
 - PROVIDE AN INSULATED GREEN GROUND FOR CONTROL CIRCUIT IN PVC CONDUIT.
 - CONTRACTOR SHALL VERIFY EXISTING UNDERGROUND UTILITIES BEFORE ANY EXCAVATION.
 - CIRCUIT ORIGINATING FROM 120/208 OR 120/240V LIGHTING PANEL SHALL BE PREFIXED BY LIGHTING PANEL NUMBER.
 - EQUIPMENT SUCH AS LIGHTING PANEL, CONTROL PANEL, COMBINATION STARTER, ETC. SHOWN WALL MOUNTED, SHALL BE STRUCTURALLY SUPPORTED BY PREFORMED GALVANIZED VERTICAL CHANNELS.
 - CONTROL STATIONS ARE THE LOCATION OF MULTIPLE HAND SWITCHES AND CONTROL DEVICES. REFER TO SCHEMATIC DIAGRAM FOR ACTUAL DEVICES.
 - SEE DRAWING E-8 FOR RACEWAY/WIRE SCHEDULE, PANEL SCHEDULE, LIGHTING FIXTURE SCHEDULE.
 - ALL ABOVE GRADE CONDUITS SHALL BE GALVANIZED RIGID STEEL UNLESS OTHERWISE INDICATED.
 - ALL CONDUITS ROUTED ON/IN STRUCTURES WITH STRUCTURAL EXPANSION JOINTS SHALL BE INSTALLED PER **E144 TYP**.
 - ALL INSTALLATION SHALL BE DONE IN AN ACCEPTABLE WORKMANLIKE MANNER.
- #### ABBREVIATIONS
- | | |
|---------|--|
| LTS | LIGHTS |
| LOS | LOCKOUT STOP |
| LSIG | LONG TIME, SHORT TIME, INSTANTANEOUS, GROUND |
| LSG | LONG TIME, SHORT TIME, GROUND. |
| MCC | MOTOR CONTROL CENTER |
| MH | MOUNTING HEIGHT |
| MTR | MOTOR |
| MCP | MOTOR CIRCUIT PROTECTOR |
| MS | MOTION SENSOR |
| MSH | MOTOR SPACE HEATER |
| MTS | MANUAL TRANSFER SWITCH |
| NTS | NOT TO SCALE |
| OIU | OPERATOR INTERFACE UNIT |
| PNL | PANEL |
| PC | PHOTO CELL |
| PLC | PROGRAMMABLE LOGIC CONTROLLER |
| PWR | POWER |
| PB | PULL BOX |
| RTD | RESISTANCE TEMPERATURE DETECTOR |
| SHLD | SHIELDED |
| STP | SHIELDED TWISTED PAIR |
| SN | SOLID NEUTRAL |
| SSC | SOFT START CONTROLLER |
| SSRV | SOLID STATE REDUCED VOLTAGE STARTER |
| SST | SOLID STATE TRIP UNIT |
| SP | SPARE |
| S OR SW | SWITCH |
| TS | TEMPERATURE SWITCH |
| TB | TERMINAL BOX |
| XFMR | TRANSFORMER |
| TP | TWISTED PAIR |
| UG | UNDERGROUND |
| VFD | VARIABLE FREQUENCY DRIVE |
| WP | WEATHERPROOF |



79399 REV NO.	REVISION DESCRIPTION	DATE	DRAWN	CHECKED			Environmental Division LONE MOUNTAIN SEWER LIFT STATION MODIFICATIONS DURANGO HILLS WATER RESOURCE CENTER MISC IMPROVEMENTS	DESIGNED BY: A. PALANCA DRAWN BY: R. VEGA CHECKED BY: L. WONG	SUPERSEDES DWG NO.	SCALE: NONE	DRAWING NO. E-1	SHEET NO. 31 of 46
	DEPARTMENT OF PUBLIC WORKS											

H:\CAD\CLV_LV068444\10dwg\894410-E-001 4-13-05 09 15am aevans XREFS wpc\border-22x4.ERICLnv, Hugh-nv, j-nv, Rosann