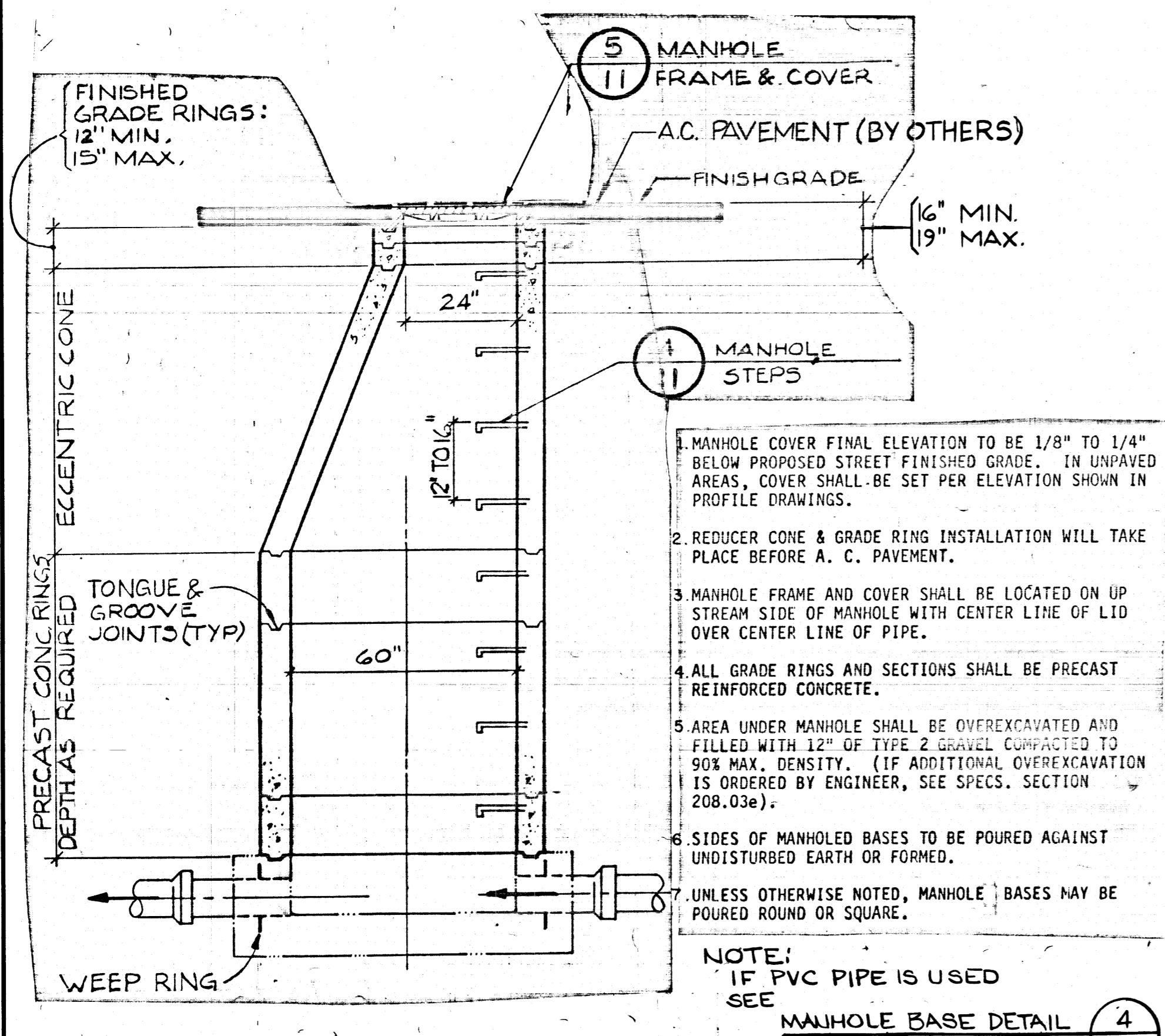


- NOTES:**
1. CAST IRON SHALL HAVE A MINIMUM TENSILE STRENGTH OF 30,000 LBS./SQ. IN.
 2. FRAME AND COVER MACHINED TO FIT.
 3. WEIGHT OF FRAME AND COVER TO BE 525 LBS. MIN.
 4. FRAME AND COVER TO BE ALHAMBRA FOUNDRY CO. TYPE A-1311 OR SOUTH BAY FOUNDRY TYPE 1311 OR APPROVED EQUAL.

NOTE:
FOR MATERIAL
(SEE SPECS.)

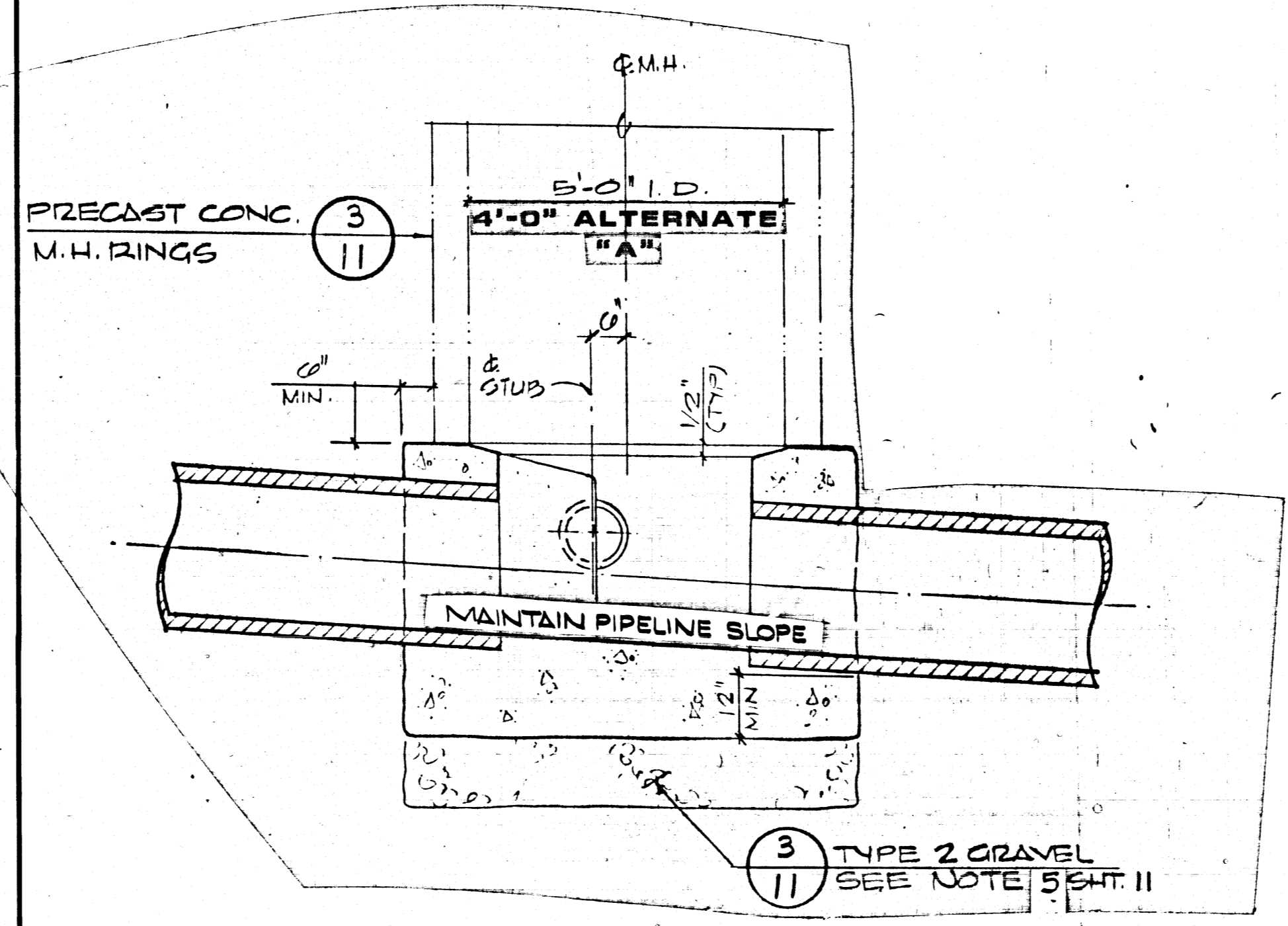
MANHOLE FRAME & COVER DETAIL (5/11)

STD. MANHOLE STEP DETAIL (4/11)

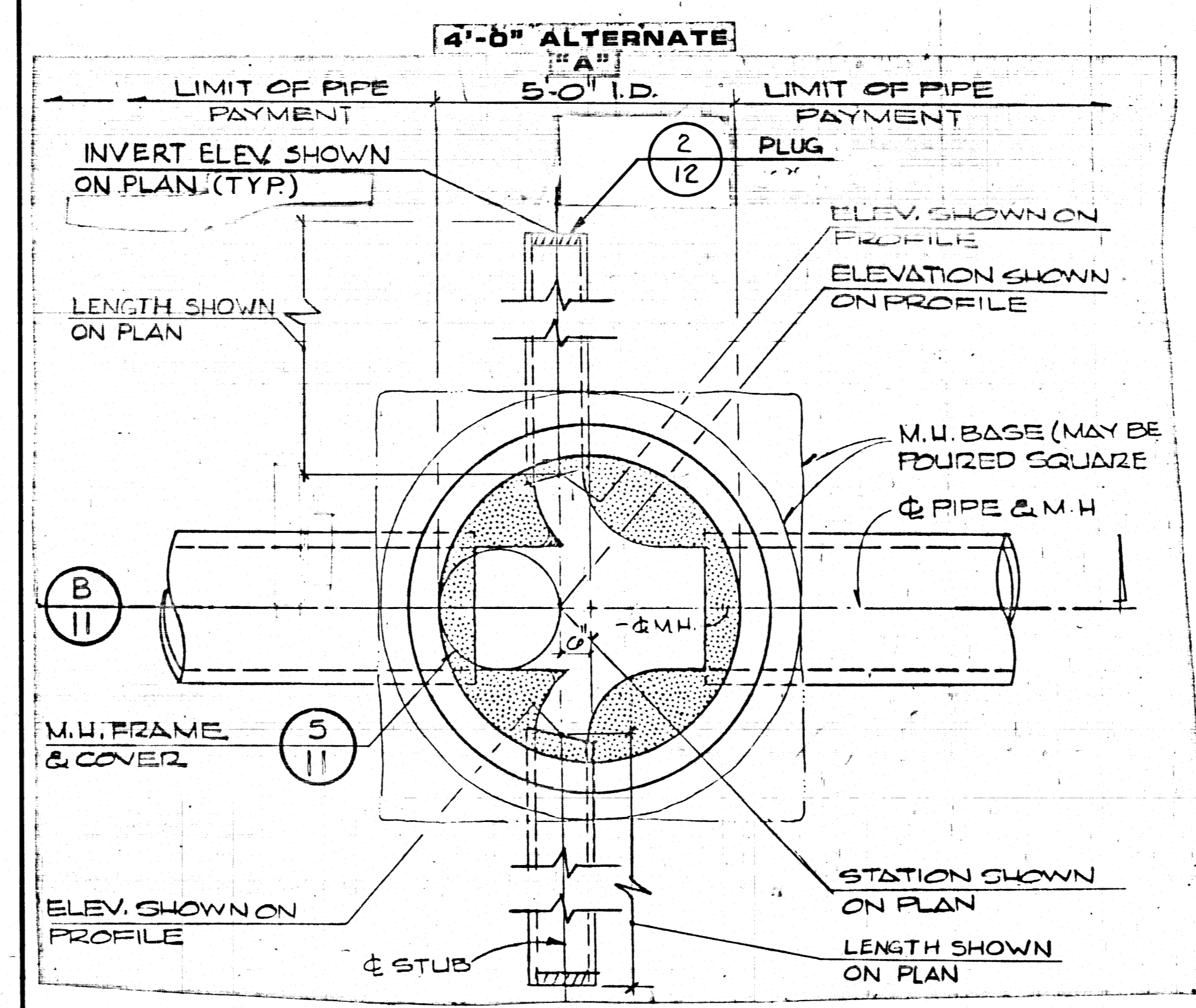


1. MANHOLE COVER FINAL ELEVATION TO BE 1/8" TO 1/4" BELOW PROPOSED STREET FINISHED GRADE. IN UNPAVED AREAS, COVER SHALL BE SET PER ELEVATION SHOWN IN PROFILE DRAWINGS.
 2. REDUCER CONE & GRADE RING INSTALLATION WILL TAKE PLACE BEFORE A. C. PAVEMENT.
 3. MANHOLE FRAME AND COVER SHALL BE LOCATED ON UP STREAM SIDE OF MANHOLE WITH CENTER LINE OF LID OVER CENTER LINE OF PIPE.
 4. ALL GRADE RINGS AND SECTIONS SHALL BE PRECAST REINFORCED CONCRETE.
 5. AREA UNDER MANHOLE SHALL BE OVEREXCAVATED AND FILLED WITH 12" OF TYPE 2 GRAVEL COMPACTED TO 90% MAX. DENSITY. (IF ADDITIONAL OVEREXCAVATION IS ORDERED BY ENGINEER, SEE SPECS. SECTION 208.03e).
 6. SIDES OF MANHOLE BASES TO BE POURED AGAINST UNDISTURBED EARTH OR FORMED.
- NOTE:
IF PVC PIPE IS USED
SEE
MANHOLE BASE DETAIL (4/12)

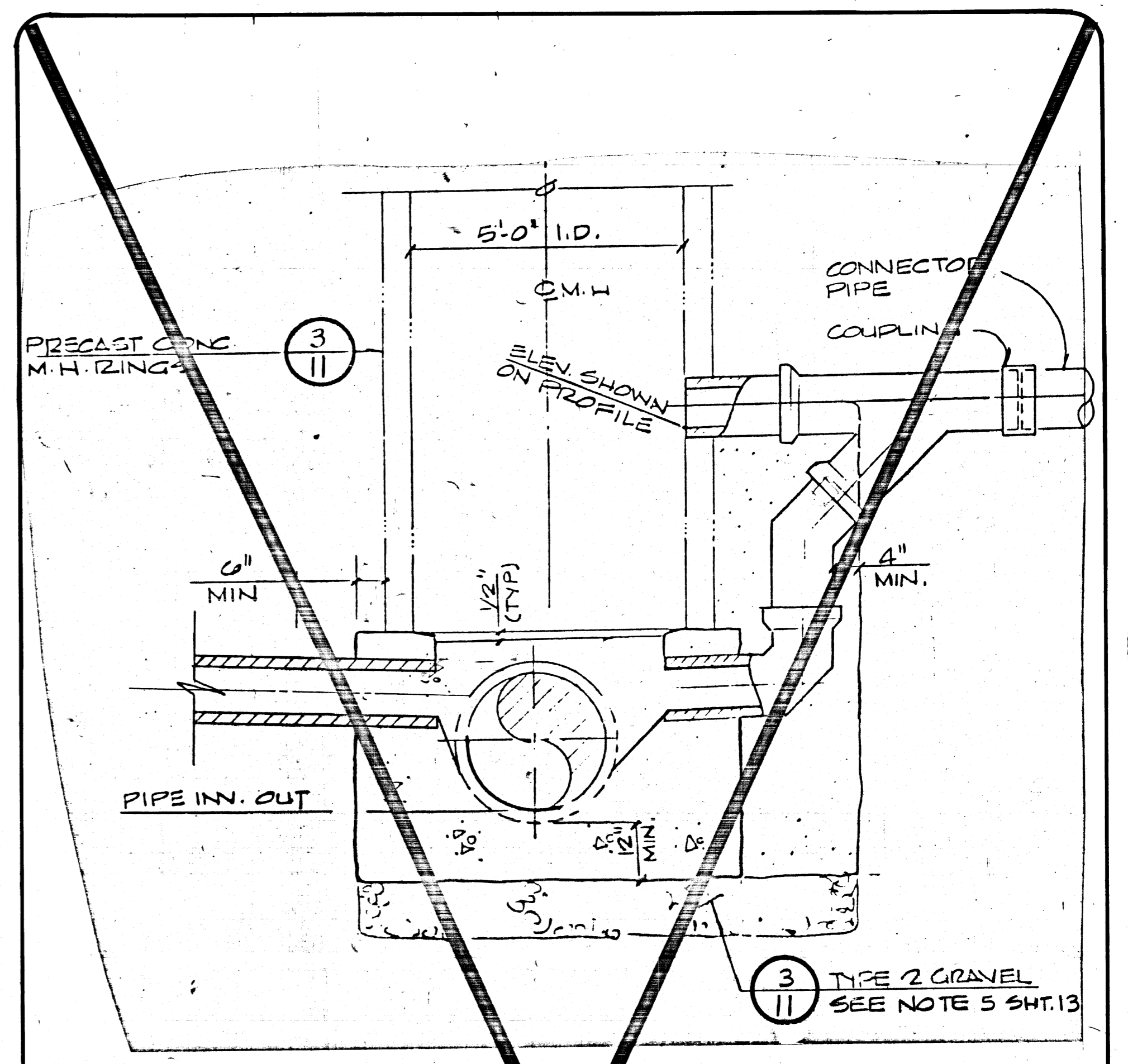
5' I.D. MANHOLE
4' I.D. M.H. ALTERNATE "A" (3/11)



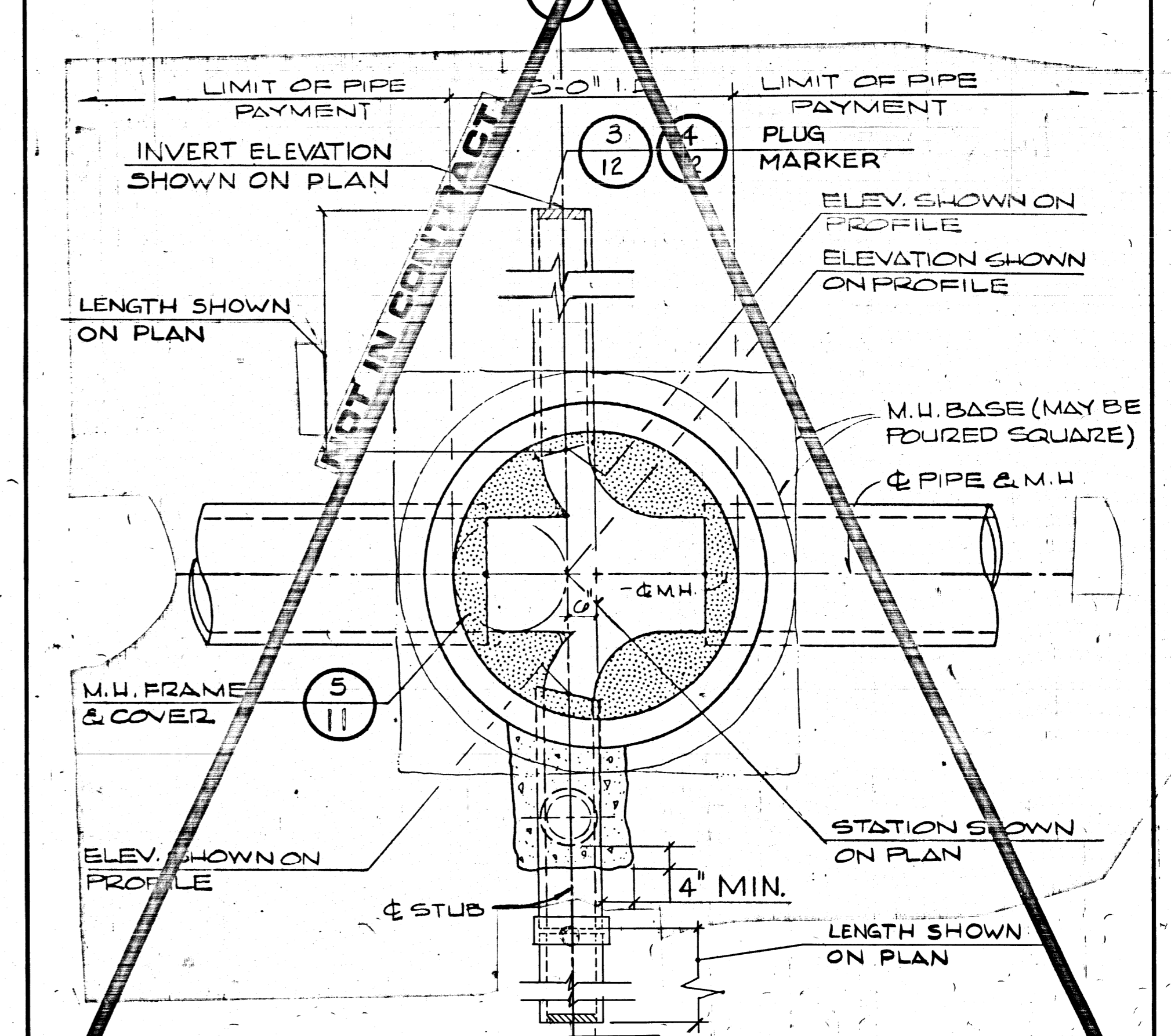
SECTION (B/11)



"B" TYPE MANHOLE (2/11)

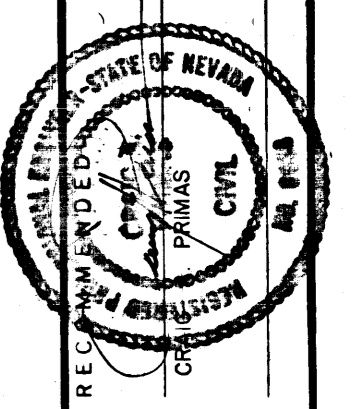


SECTION (A/11)



"A" TYPE MANHOLE (1/11)

REV	DATE	DESCRIPTION
1	11/07	ISSUED FOR BID
2	11/07	ISSUED FOR GMP
3	11/18	ISSUE FOR CONSTRUCTION



1555 SOUTH RAINBOW BLVD. LAS VEGAS, NEVADA 89102
G.C. WALLACE, INC.
Engineering/Architecture

HOWARD HUGHES PROPERTIES
LAKE MEAD BLVD. SEWER - BUFFALO TO EL CAPITAN
MANHOLE DETAILS

SHEET

JOB NO. 620.252

894 DIETERICH-POST 6538

307-V622 OF 19 SHEETS
54-1099