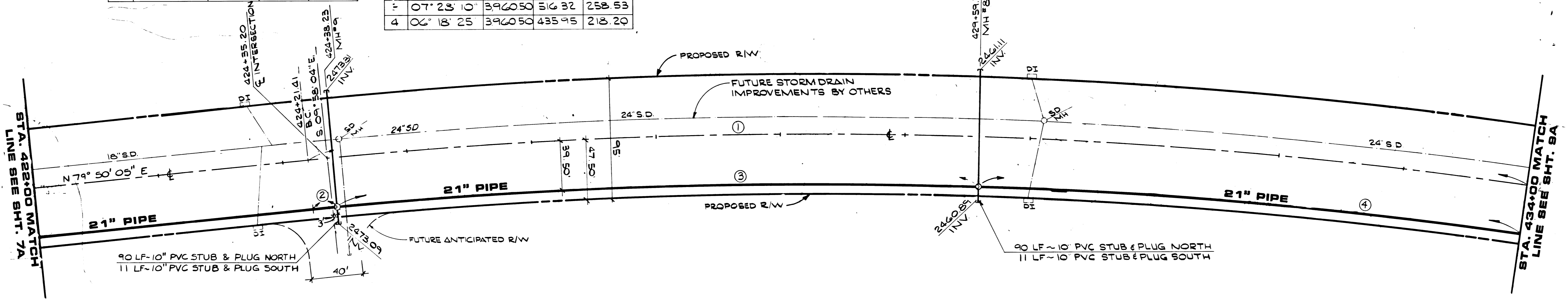


ROAD CURVE DATA

NO.	Δ	R	L	T
1	4° 01' 02"	4000.00	978.59	491.75

PIPE CURVE DATA

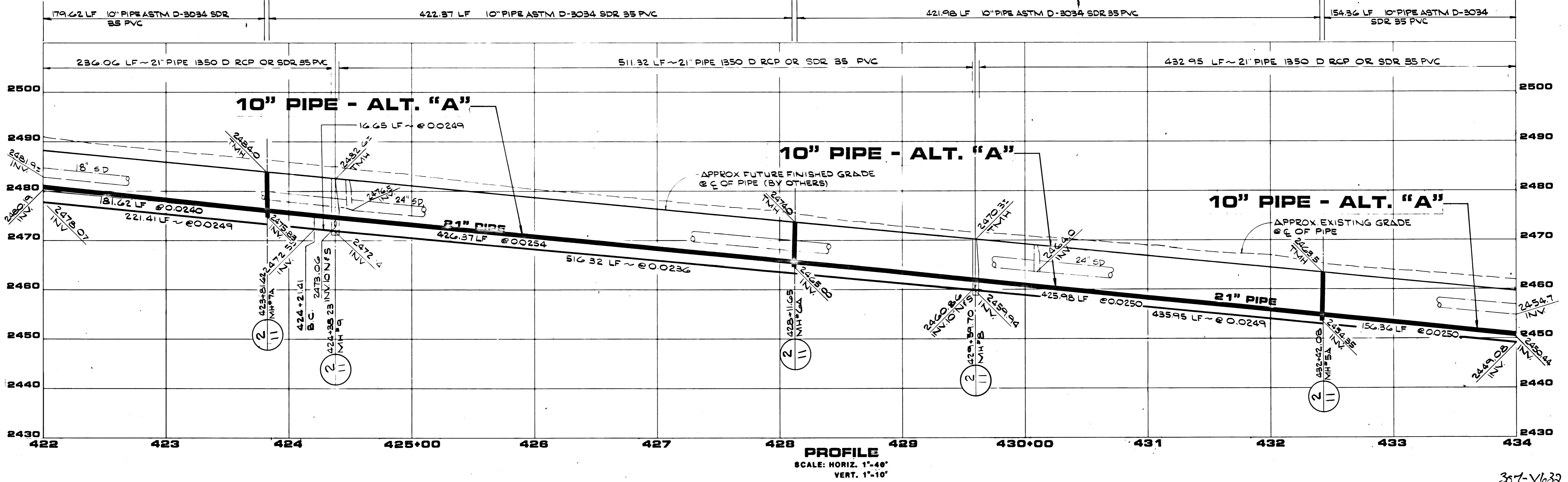
NO.	Δ	R	L	T
2	00° 14' 27"	3960.50	16.50	3.33
3	07° 23' 10"	3960.50	516.32	258.53
4	06° 18' 25"	3960.50	435.95	218.20



NOTE:
Existing contour elevations as shown in plan are represented correctly between Sta. 374+00 to Sta. 383+00. Existing contour elevations as shown in plan between Sta. 383+00 to Sta. 386+00 vary from as shown at Sta. 383+00 to 0.8' high at Sta. 386+00. Existing contour elevations as shown in plan between Sta. 386+00 to Sta. 451+53.69 are 0.8' high. The existing ground profiles between these Stations, as shown in profile, have been lowered 0.8' and correctly represent existing grade. (Example: An existing contour shown in plan as elevation 2490, is correctly represented as elevation 2489.2) Existing contour elevations as shown in plan between Sta. 451+53.69 to Sta. 458+00 vary from 0.8' high at Sta. 451+53.69 to as shown at Sta. 458+00. Existing contour elevations as shown in plan are correctly represented between Sta. 458+00 to Sta. 493+66.01.

NOTE:
HORIZONTAL ALIGNMENT OF ALTERNATE "A" PIPE, SAME AS 21" PIPE ALIGNMENT, ALTERNATE "A" M.I.F. NOT SHOWN IN PLAN, SEE PROFILE. STUBS AT MANHOLES ARE NOT TO BE INCLUDED IN ALTERNATE "A" BID.

LAKE MEAD BOULEVARD



DESCRIPTION: ISSUED FOR BID, ISSUED FOR GMP, ISSUED FOR CONSTRUCTION

REV. DATE: 11/09/17, 11/06/17, 07/18/18

RECOMMENDED: CRAIG A. PRINIAS, 6538 N.E. 100th

DATE: 07/18/18

1555 NORTH BAINBRIDGE BLVD. (ANVIL) VEGAS, NEVADA 89102

G.C. WALLACE, INC.
Engineering/Architecture

HOWARD HUGHES PROPERTIES
LAKE MEAD BLVD. SEWER - BUFFALO TO EL CAPITAN
PLAN & PROFILE
STA. 422+00 TO STA. 434+00

SHEET
8A
OF 19 SHEETS