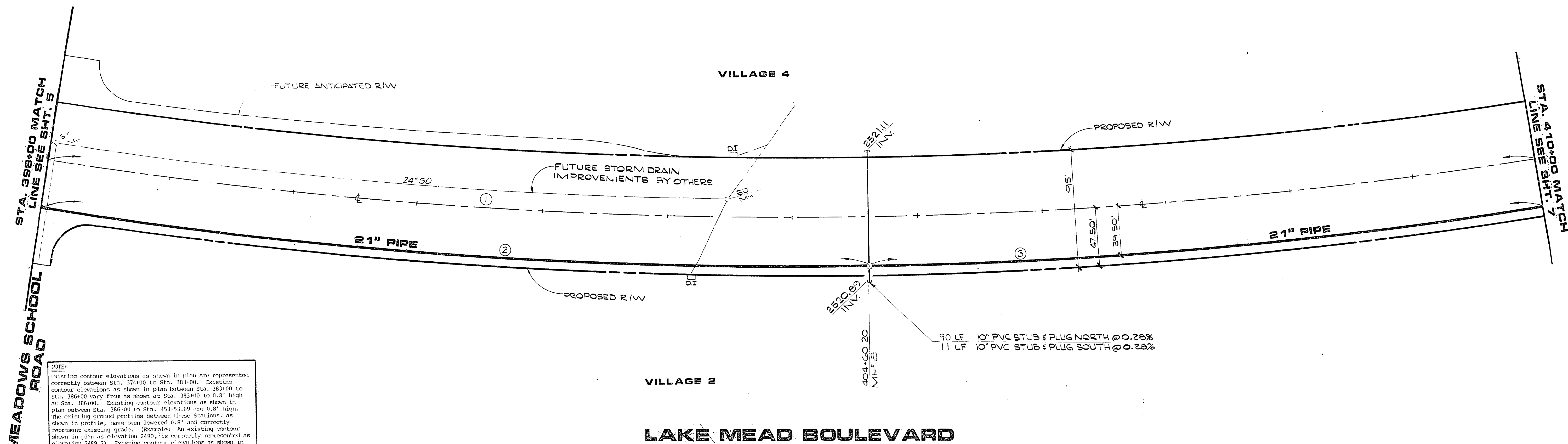
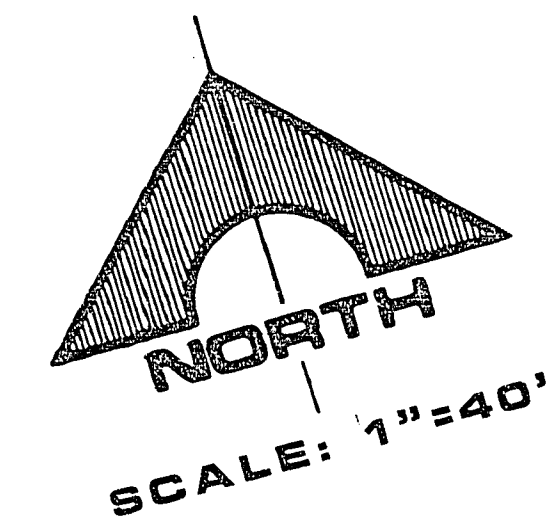
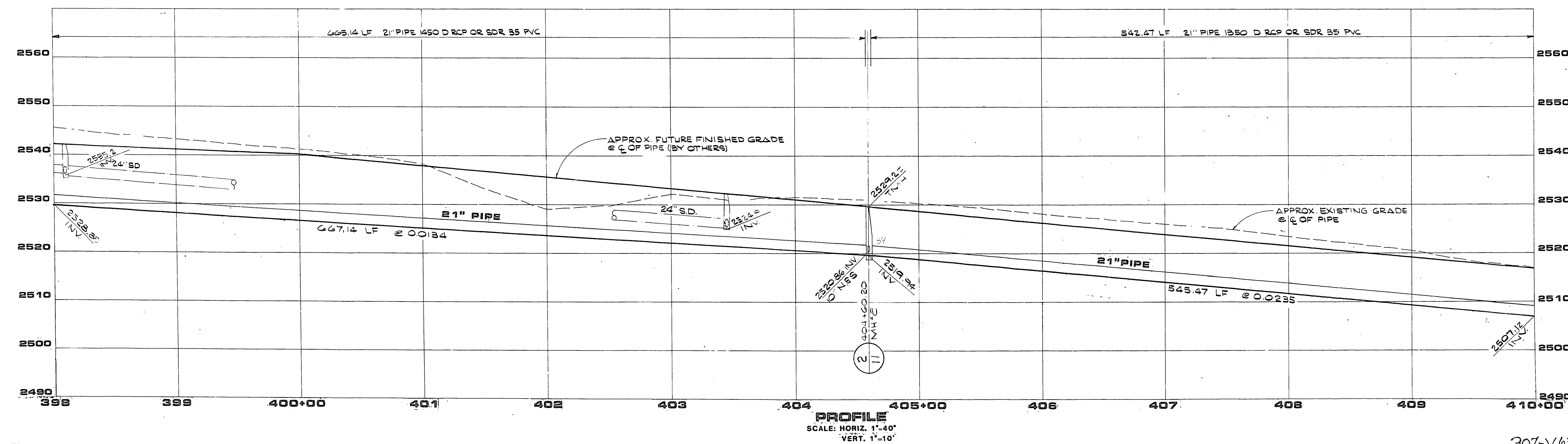


ROAD CURVE DATA				
No.	Δ	R	L	T
1	18° 17' 09"	3760.00'	1200.00'	605.15'

PIPE CURVE DATA				
No.	Δ	R	L	T
2	10° 03' 37"	3799.50'	667.14'	334.43'
3	08° 13' 32"	3799.50'	545.47'	273.20'



NOTE:
Existing contour elevations as shown in plan are represented correctly between Sta. 374+00 to Sta. 383+00. Existing contour elevations as shown in plan between Sta. 383+00 to Sta. 386+00 vary from as shown at Sta. 383+00 to 0.8' high at Sta. 386+00. Existing contour elevations as shown in plan between Sta. 386+00 to Sta. 451+53.69 are 0.8' high. The existing ground profiles between these Stations, as shown in profile, have been lowered 0.8' and correctly represent existing grades. (Example: An existing contour shown in plan as elevation 2490.2' is correctly represented as elevation 2489.2'). Existing contour elevations as shown in plan between Sta. 453+53.69 to Sta. 458+00 vary from 0.8' high at Sta. 453+53.69 to as shown at Sta. 458+00. Existing contour elevations as shown in plan are correctly represented between Sta. 458+00 to Sta. 493+66.01.



REV	DATE	DESCRIPTION
A	11/08/17	ISSUED FOR BID
B	11/08/17	ISSUED FOR G.P.F.
C	11/08/17	ISSUED FOR CONSTRUCTION

REVISIONS	DATE	DESCRIPTION

HOWARD HUGHES PROPERTIES
 LAKE MEAD BLVD. SEWER - BUFFALO TO EL CAPITAN
 PLAN & PROFILE
 STA. 398+00 TO STA. 410+00

G.C. WALLACE, INC.
 Engineering/Architecture

SHEET
 6
 OF 19 SHEETS

JOB NO. 650.252

CAN 091266

307-V63a

21-1-59