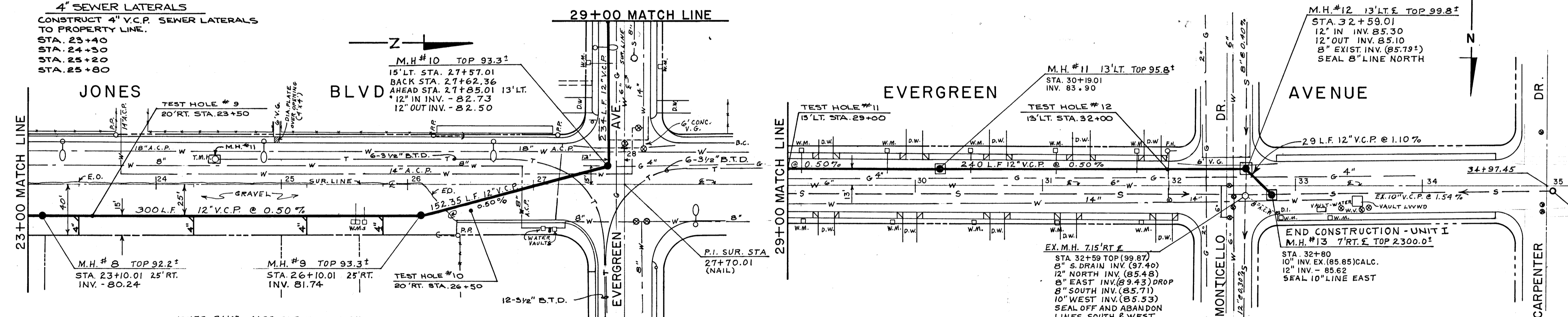
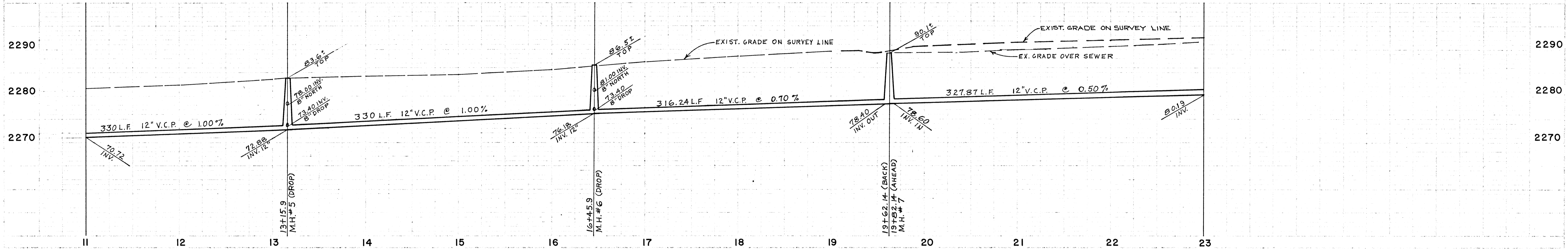
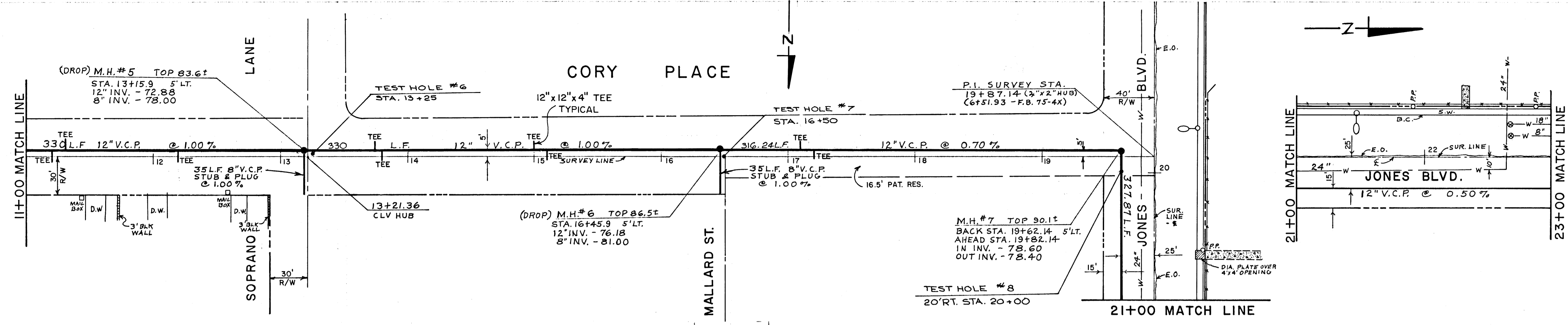
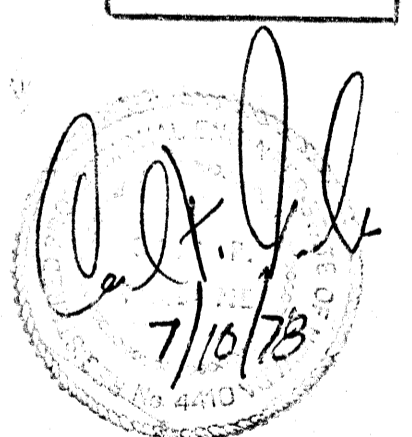
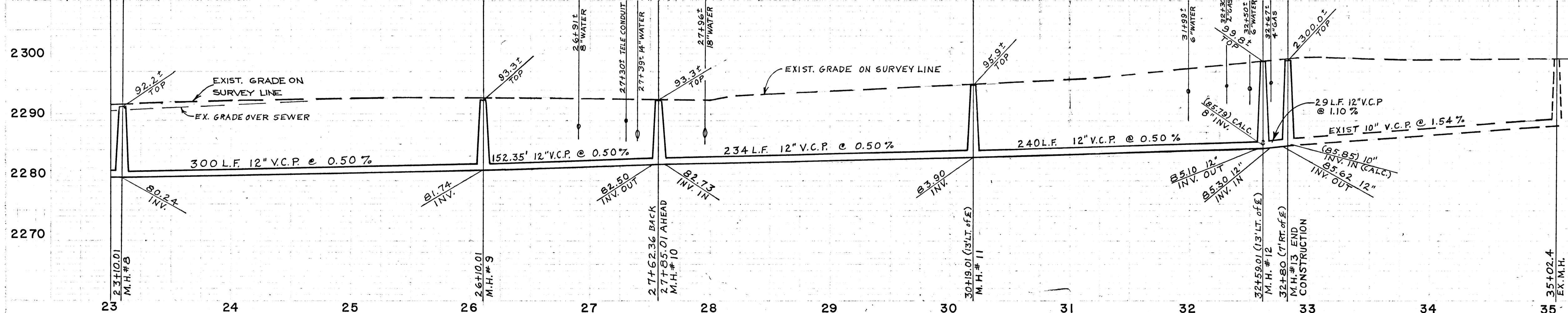


APPROXIMATE QUANTITIES - THIS SHEET UNIT I				
ITEM	DESCRIPTION	UNIT	QUANTITY	
630.008	8" V.C.P. (2 STUB)	L.F.	70	
630.012	12" V.C.P.	L.F.	2146	
630.204	4' DIA. ECC. MANHOLE (7)	V.F.	87.1	
630.214	4' DIA. ECC. (DROP) MANHOLE (2)	V.F.	21.1	
630.004	4" V.C.P. (LATERAL) (4)	L.F.	60	
630.112	12 X 12 X 4 V.C.P. TEE	EA.	9	
501.100	CONC. MANHOLE COLLAR	EA.	3	



BENCH MARK
 B.M. 06036 C2
 N.E. COR CHARLESTON + JONES
 ELEVATION - 2288.04

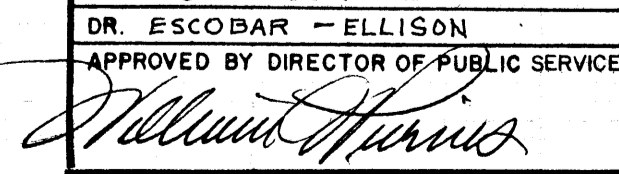
CONT'D OF DRAWING
 JUL 30 1978




REVISIONS				
NO	DESCRIPTION	BY	DATE	APPROVAL

CITY OF LAS VEGAS NEVADA
 DEPARTMENT OF PUBLIC SERVICES
 ENGINEERING DIVISION

JONES & CORY SEWER DIVERSION AND SMALL TRACTS SEWERS

W.O. NO. 4250	F.B.K. NO. 77-1X	DATE	DRAWING NO.
SC. (H) 1" = 50'	SC. (V) 1" = 10'	1-27-78	307-V508
DES. D. MCGONEGLE	DR. ESCOBAR - ELLISON	FILE NO.	S. I. D. 425
APPROVED BY DIRECTOR OF PUBLIC SERVICES		7/10/78	SHEET 3 OF 16

BID No. 78.23 CONTRACT No. C.L.V. 1523

See New Sheet
 21-1-137