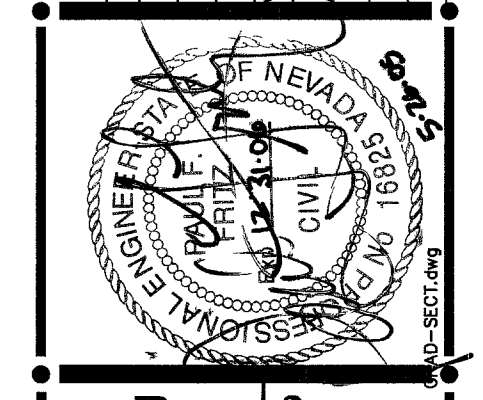


NO.	DATE	BY	REVISIONS



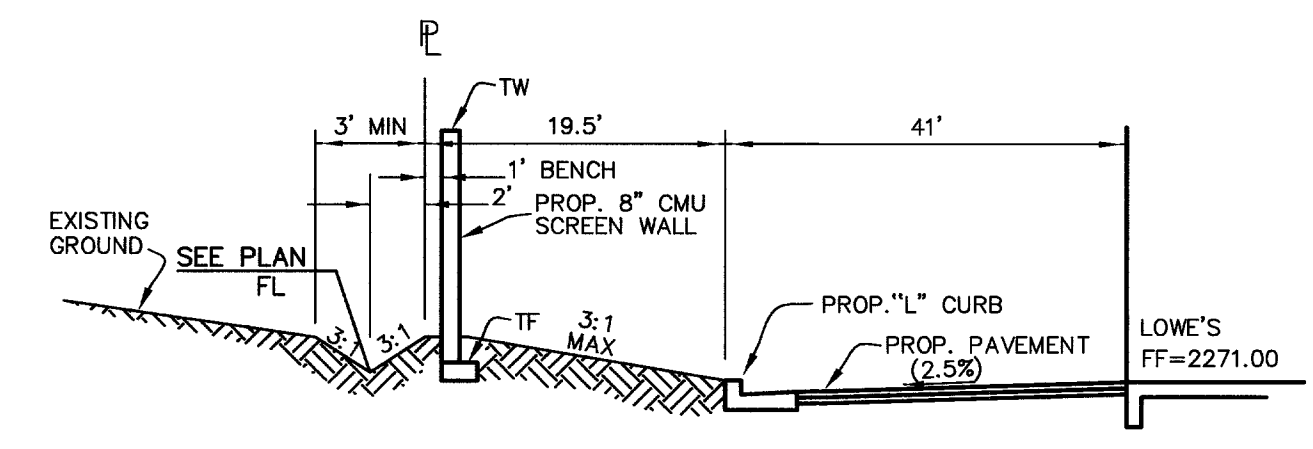
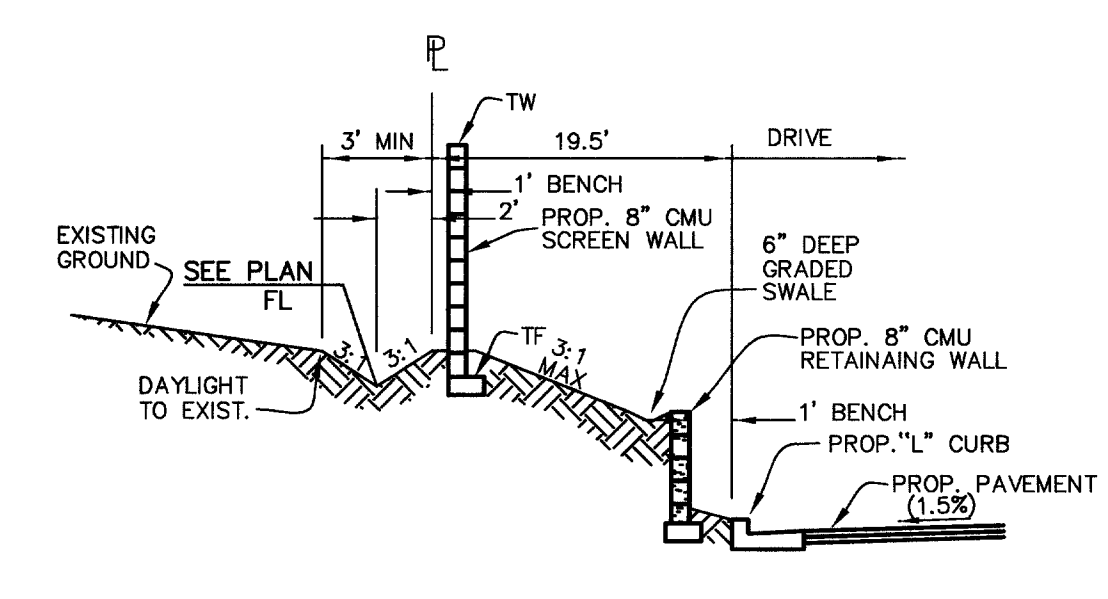
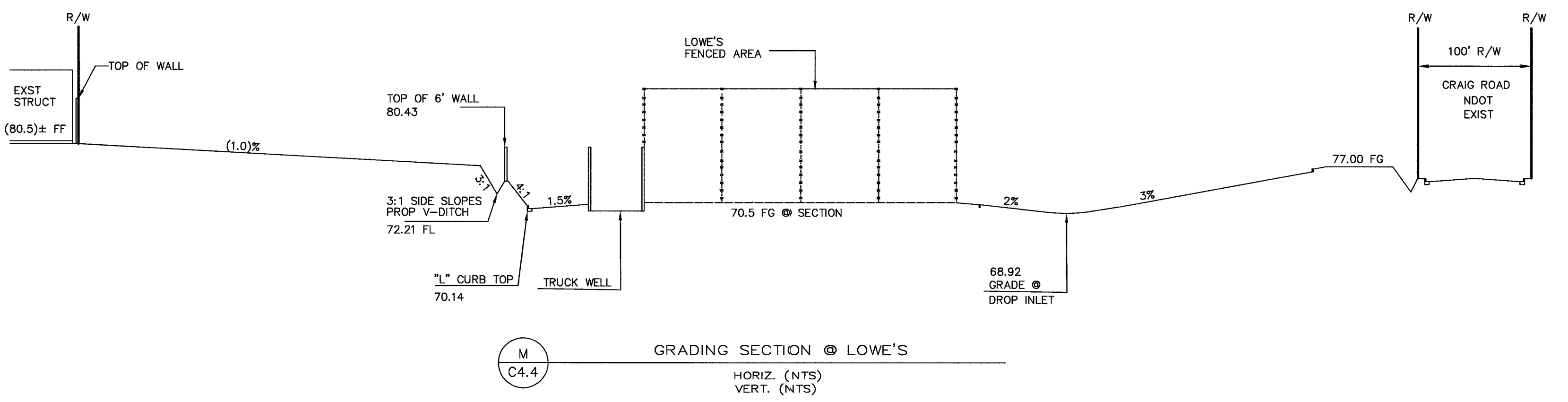
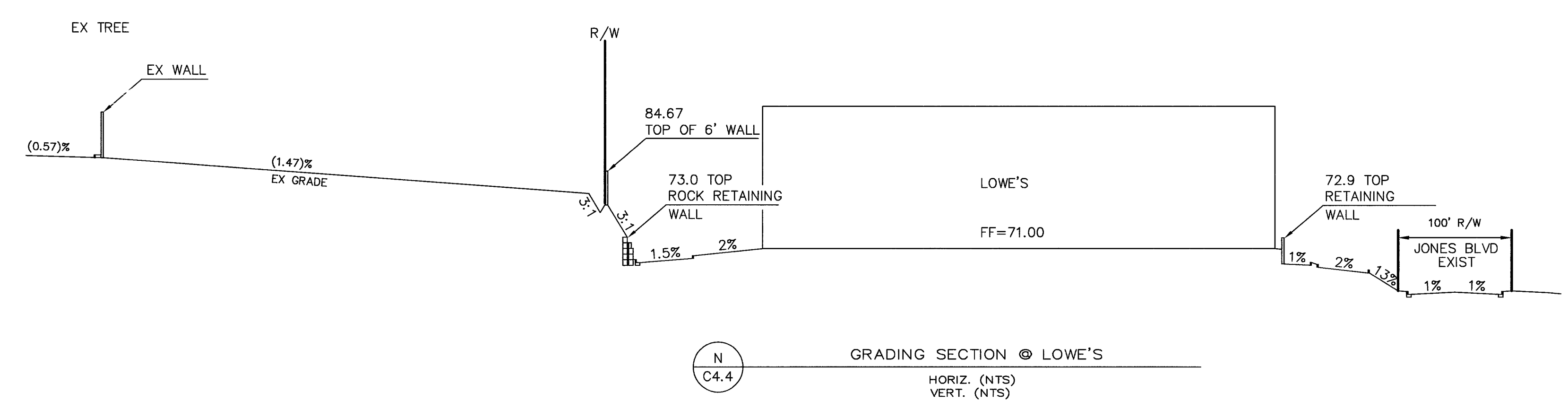
Planning / Civil Engineering / Surveying
 1500 MAIN STREET, SUITE 400, RENO, NV 89501
 TEL: (775) 446-0777 FAX: (775) 446-0779
 540 E. WASHINGTON ROAD, SUITE 101, LAS VEGAS, NV 89101
 TEL: (702) 886-8804 FAX: (702) 886-8806

ENGINEERING

LOWE'S
ENGINEERING AND CONSTRUCTION
 1530 FARADAY AVE, SUITE 140 CARLSBAD, CA 92008
 760.602.1018 (F)
 PROJECT No. 04-390 [DRAWN BY: BCK] [CHECKED BY: ML]

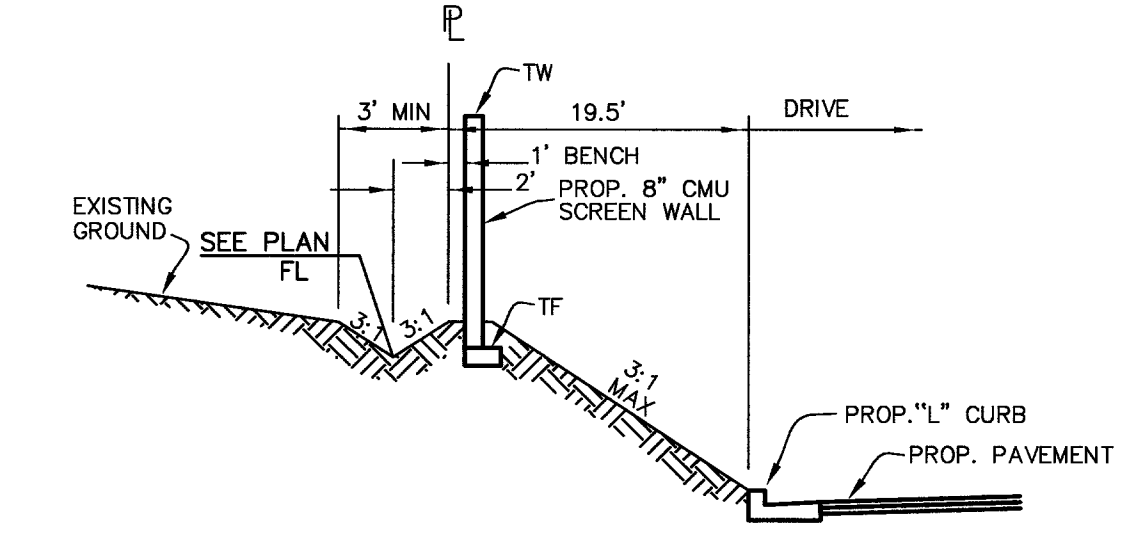
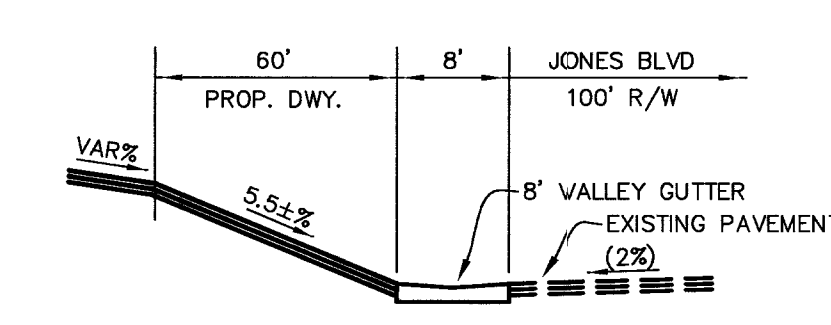
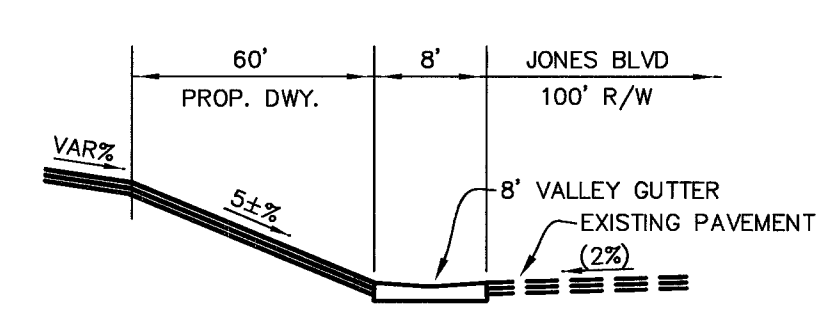
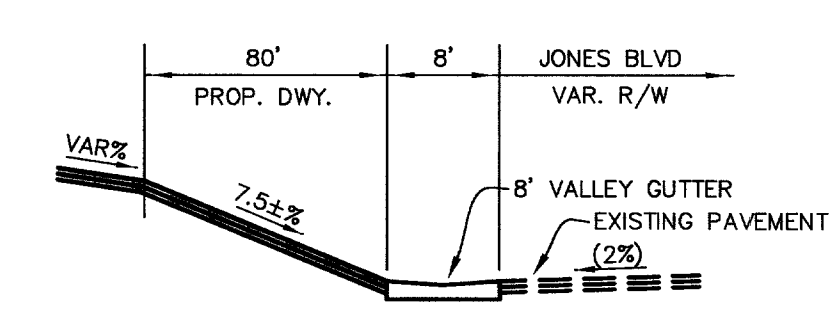
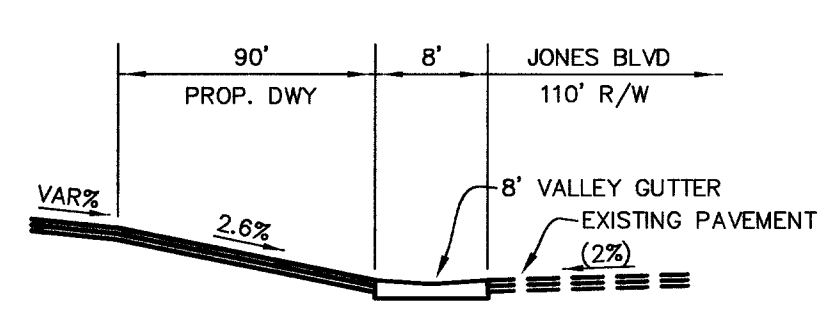
GRADING SECTIONS
 LOWE'S OF
 NW LAS VEGAS
 LAS VEGAS, NV.
 DRAWING NUMBER: C-4.4

ORIGINAL ISSUE DATE:	12/06/2004
PERMIT SET ISSUE DATE:	12/06/2004
CONSTRUCTION SET ISSUE DATE:	TBD
DRAWING NUMBER:	C-4.4



K C4.4 GRADING SECTION @ RETAINING WALL
 HORIZ. (NTS)
 VERT. (NTS)

L C4.4 GRADING SECTION @ RETAINING WALL
 HORIZ. (NTS)
 VERT. (NTS)



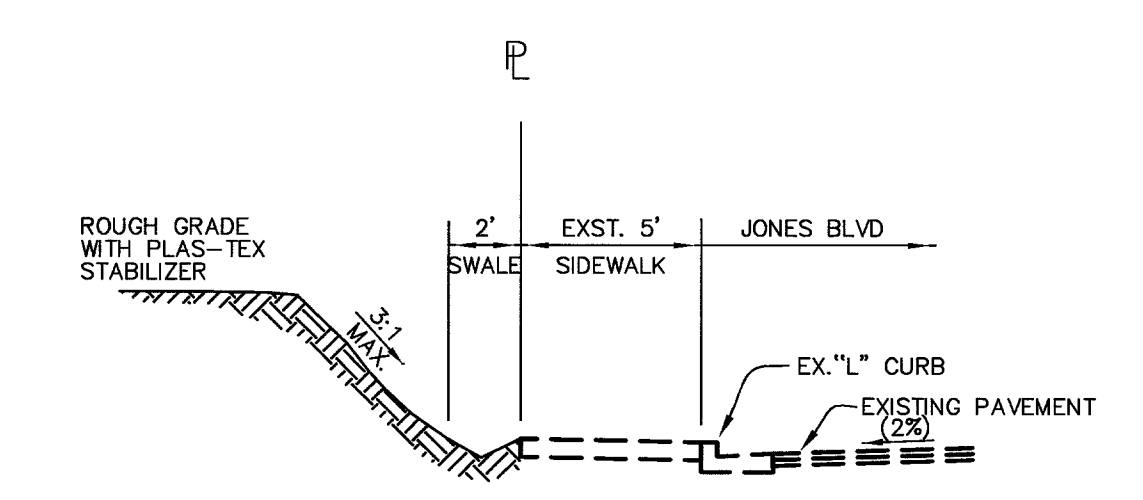
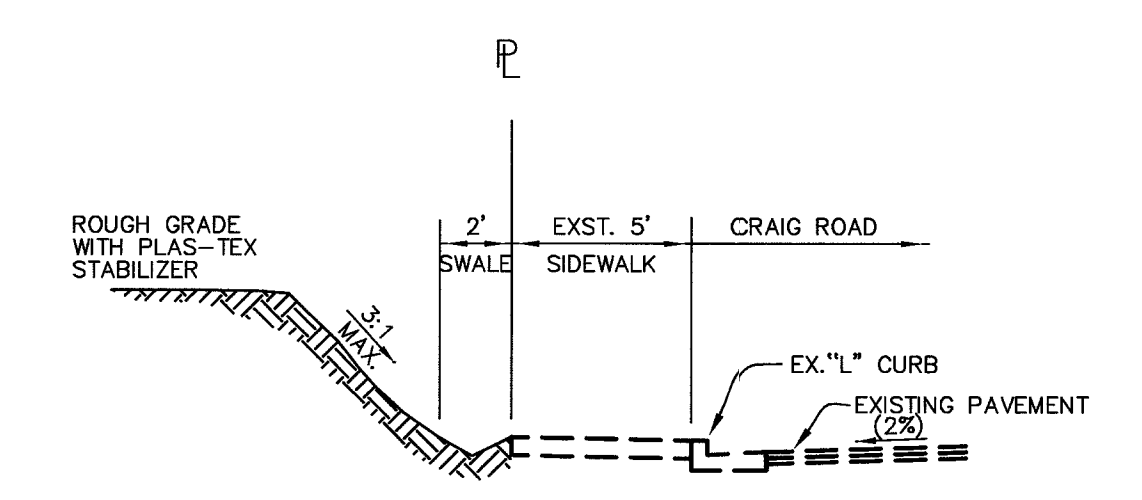
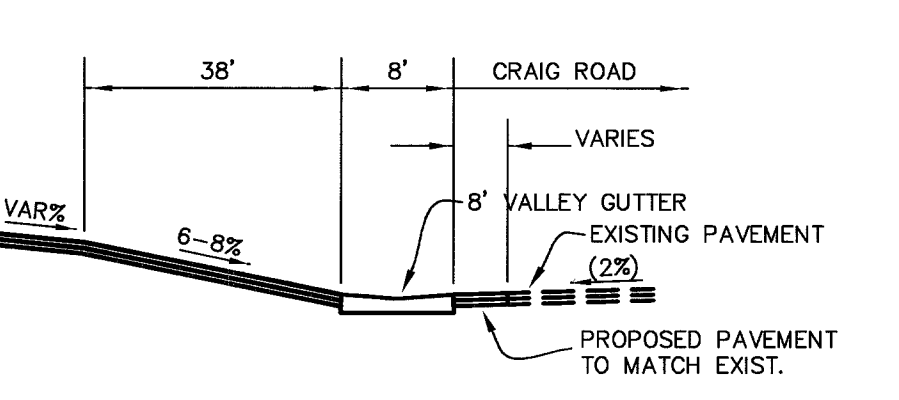
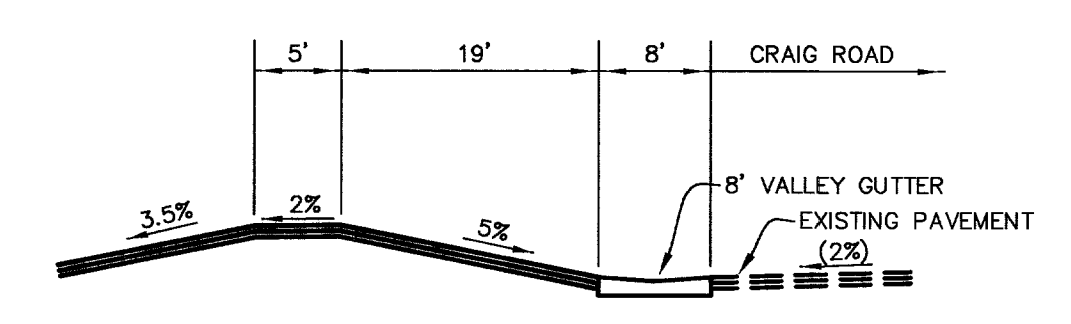
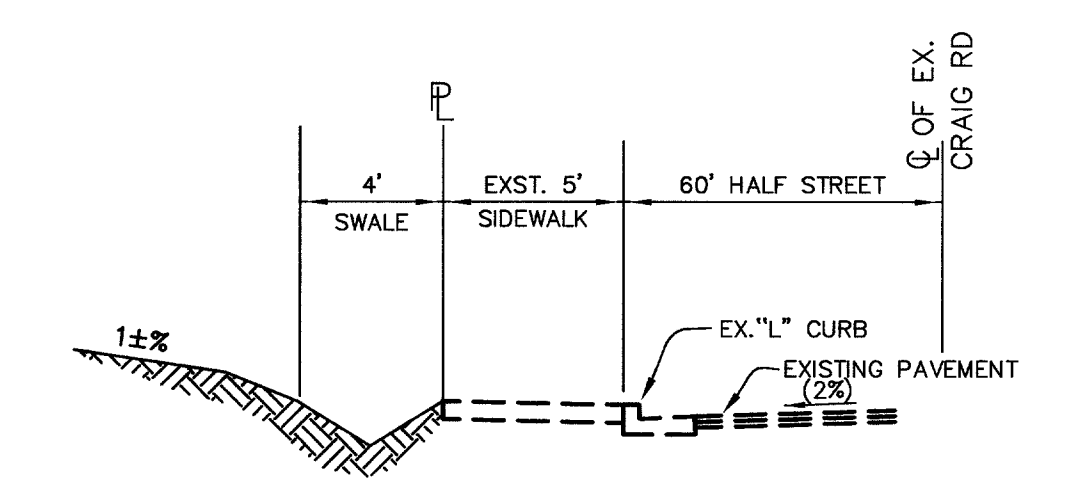
F C4.4 GRADING SECTION AT JONES BOULEVARD DRIVEWAY
 HORIZ. (NTS)
 VERT. (NTS)

G C4.4 DRIVEWAY AT JONES BLVD.
 HORIZ. (NTS)
 VERT. (NTS)

H C4.4 DRIVEWAY AT JONES BLVD.
 HORIZ. (NTS)
 VERT. (NTS)

I C4.4 GRADING SECTION AT JONES BLVD.
 HORIZ. (NTS)
 VERT. (NTS)

J C4.4 GRADING SECTION @ RETAINING WALL
 HORIZ. (NTS)
 VERT. (NTS)



A C4.4 SECTION AT CRAIG ROAD
 HORIZ. (NTS)
 VERT. (NTS)

B C4.4 SECTION AT DRIVEWAY
 HORIZ. (NTS)
 VERT. (NTS)

C C4.4 SECTION AT DRIVEWAY
 HORIZ. (NTS)
 VERT. (NTS)

D D5.4 GRADING SECTION AT CRAIG ROAD
 HORIZ. (NTS)
 VERT. (NTS)

E C4.4 GRADING SECTION AT JONES BOULEVARD
 HORIZ. (NTS)
 VERT. (NTS)
 CLV DRAWING # 1074871