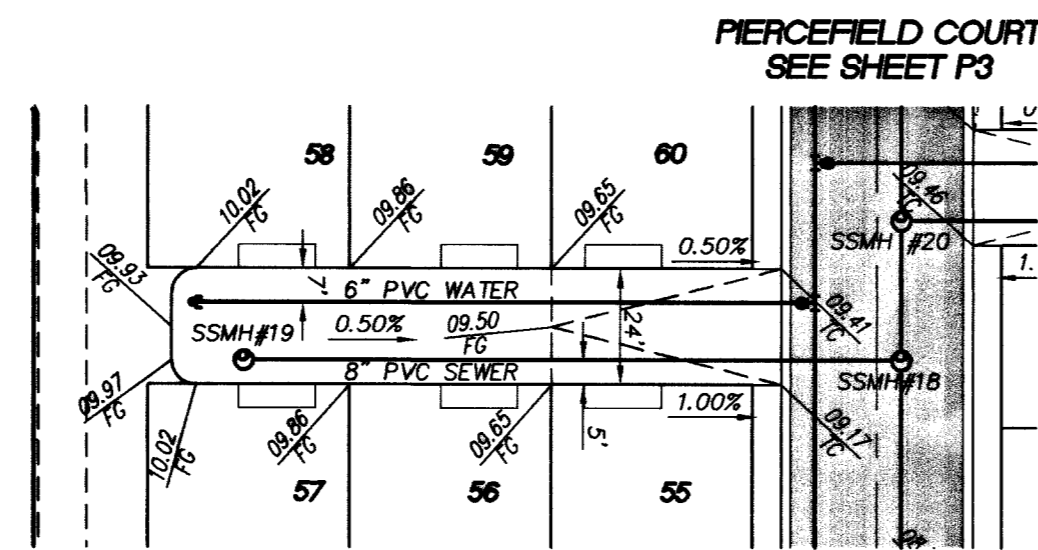
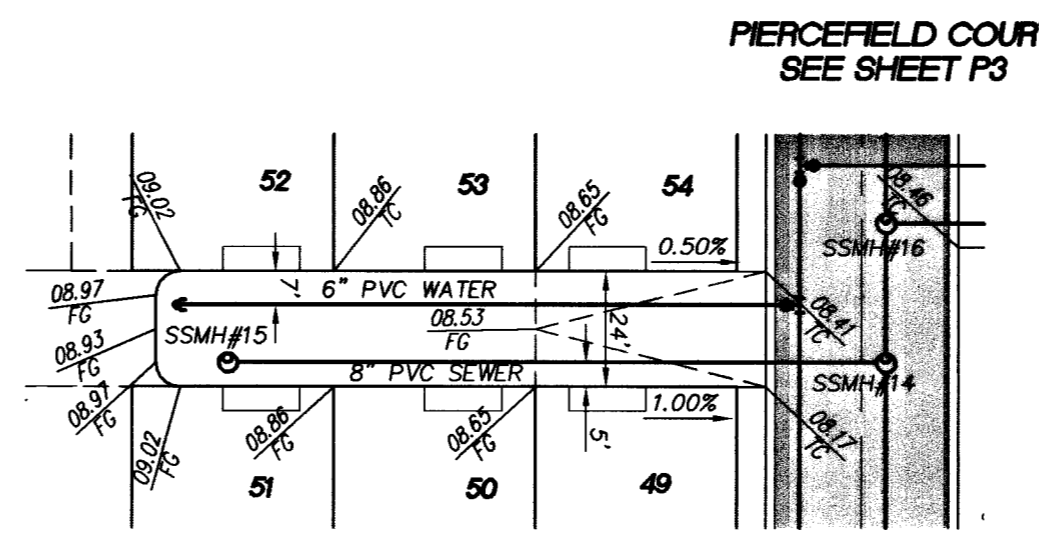


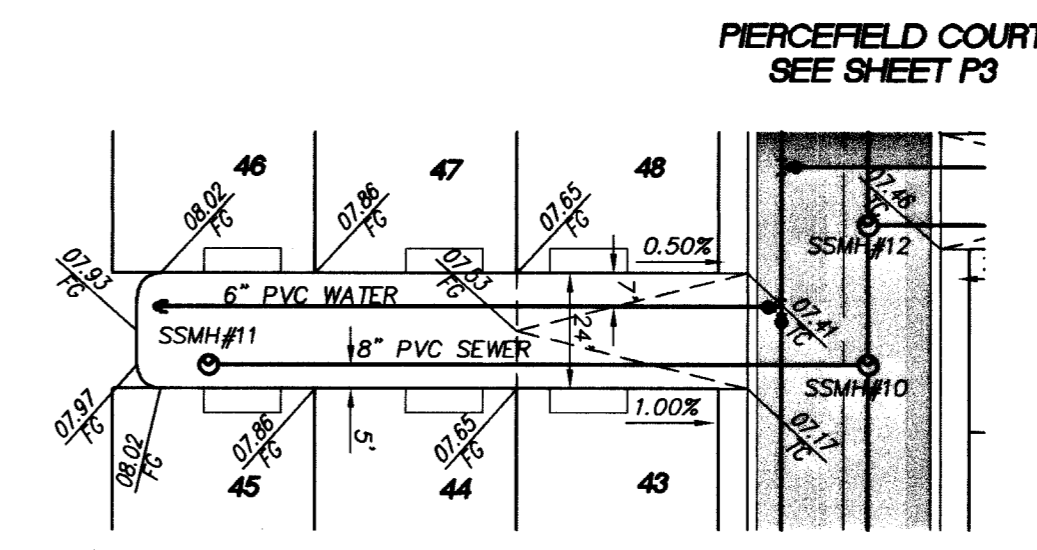
HOUGHTON LODGE
(PRIVATE)



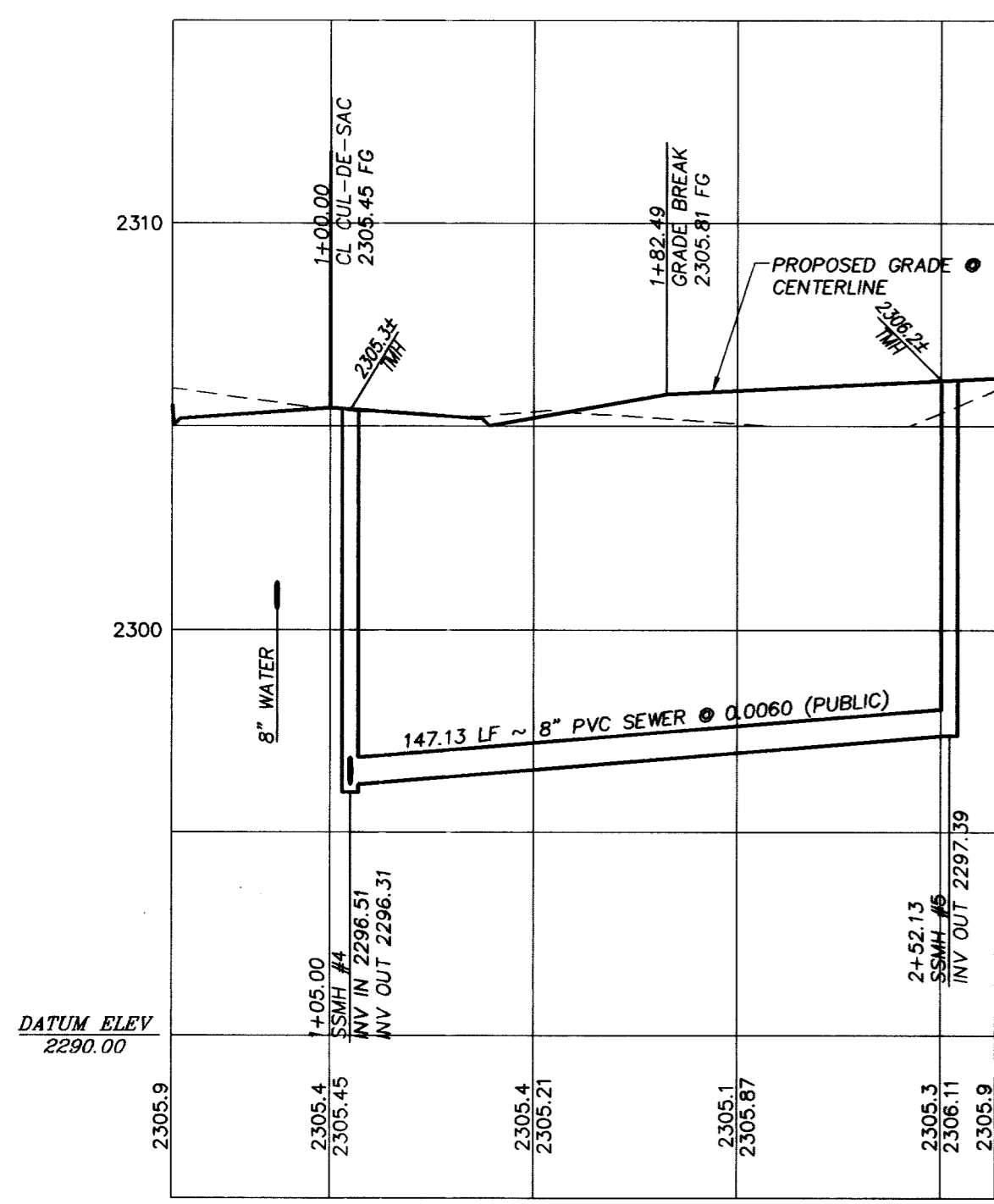
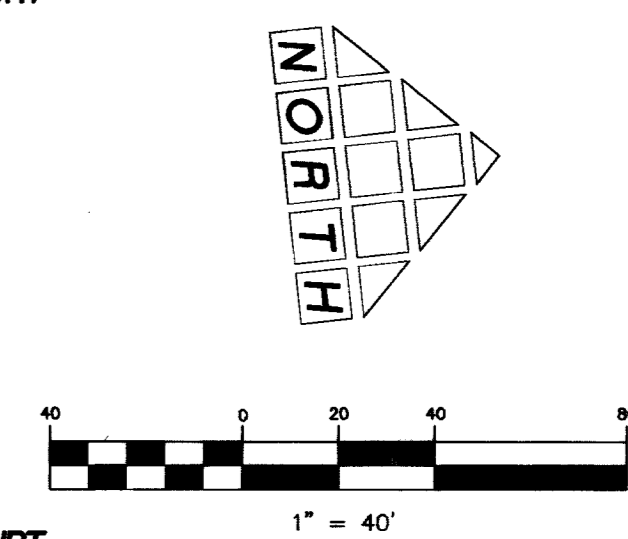
LONGSTOCK
(PRIVATE)



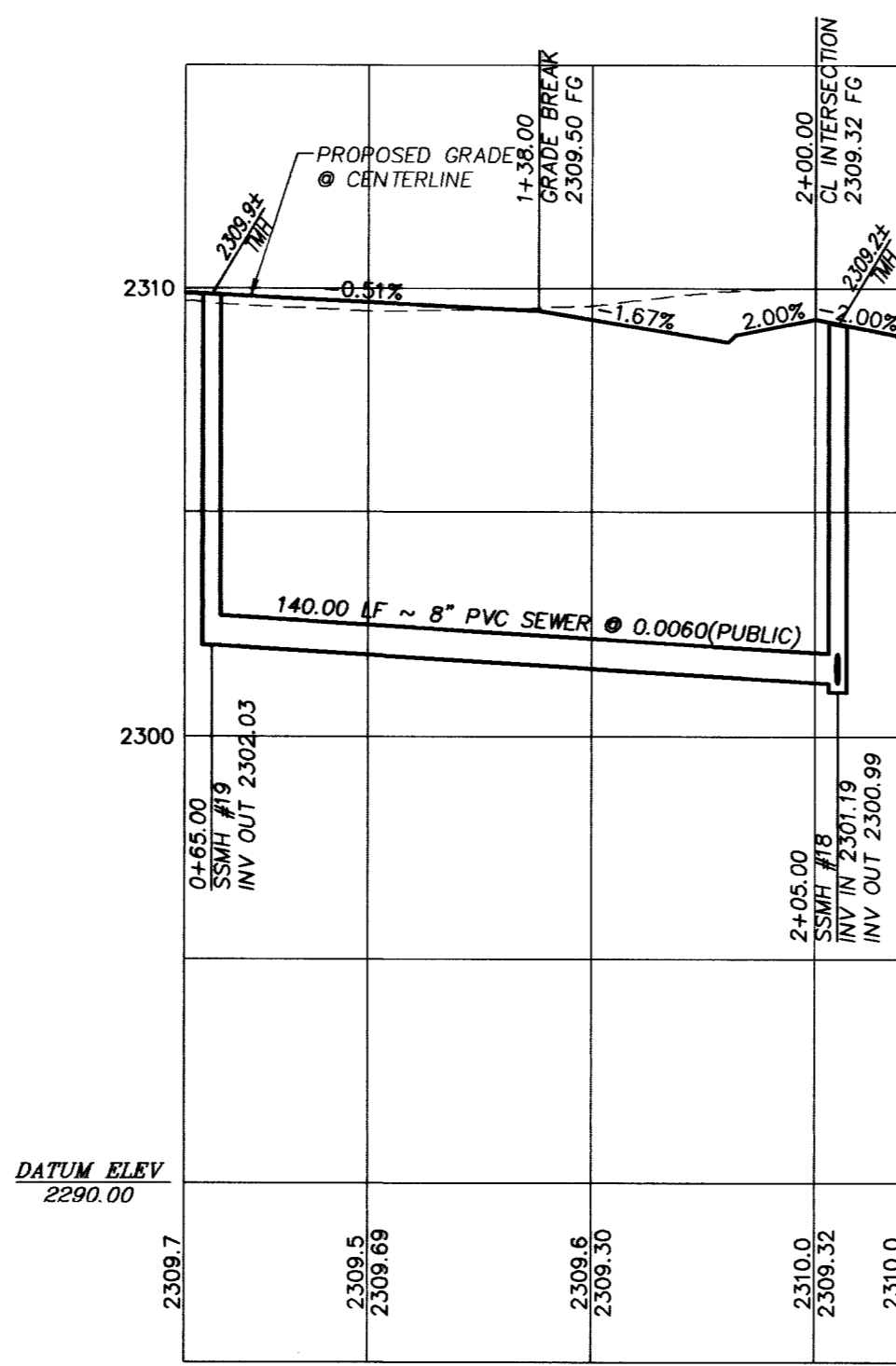
MANDERSTON
(PRIVATE)



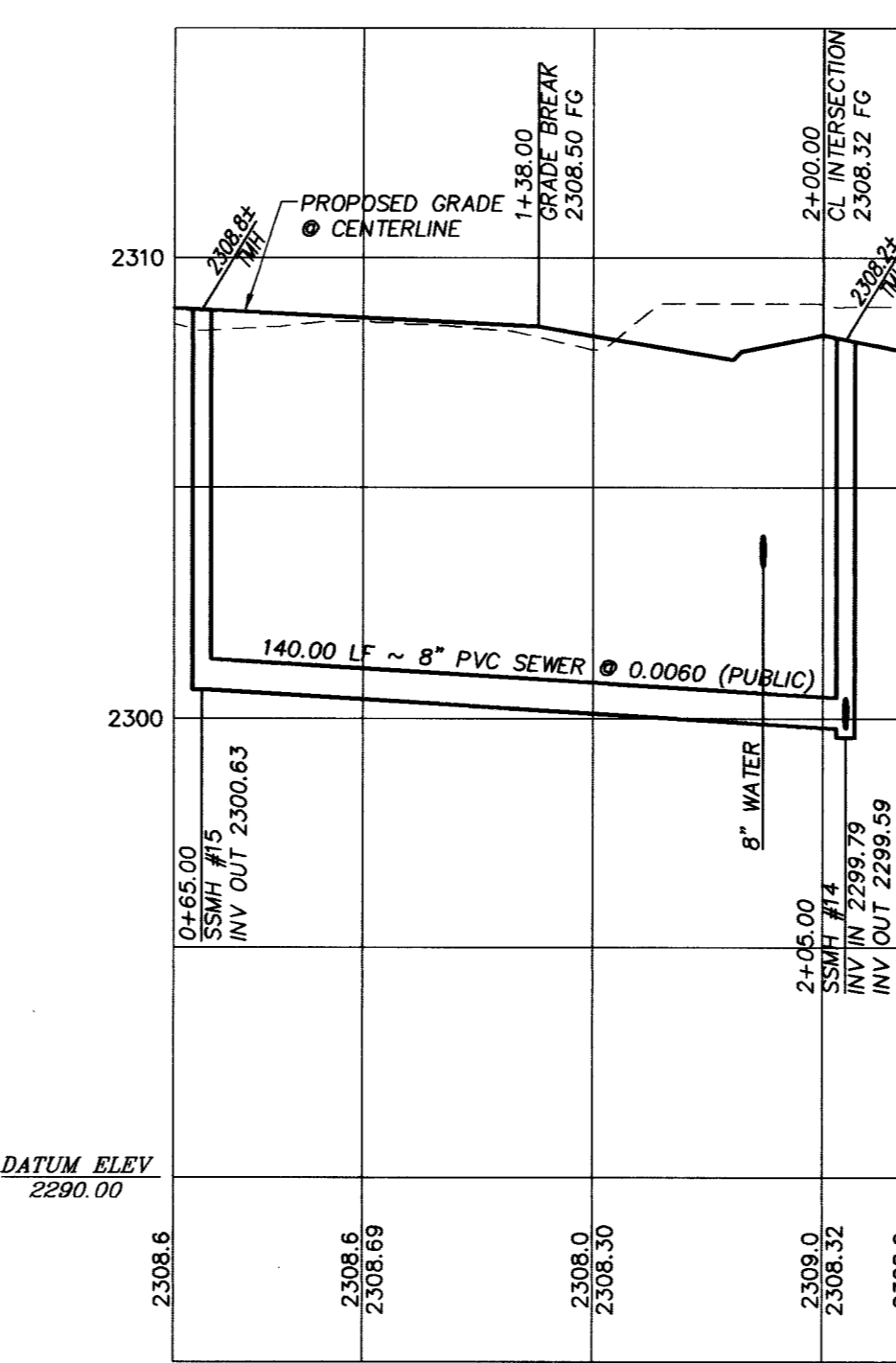
MEREWORTH
(PRIVATE)



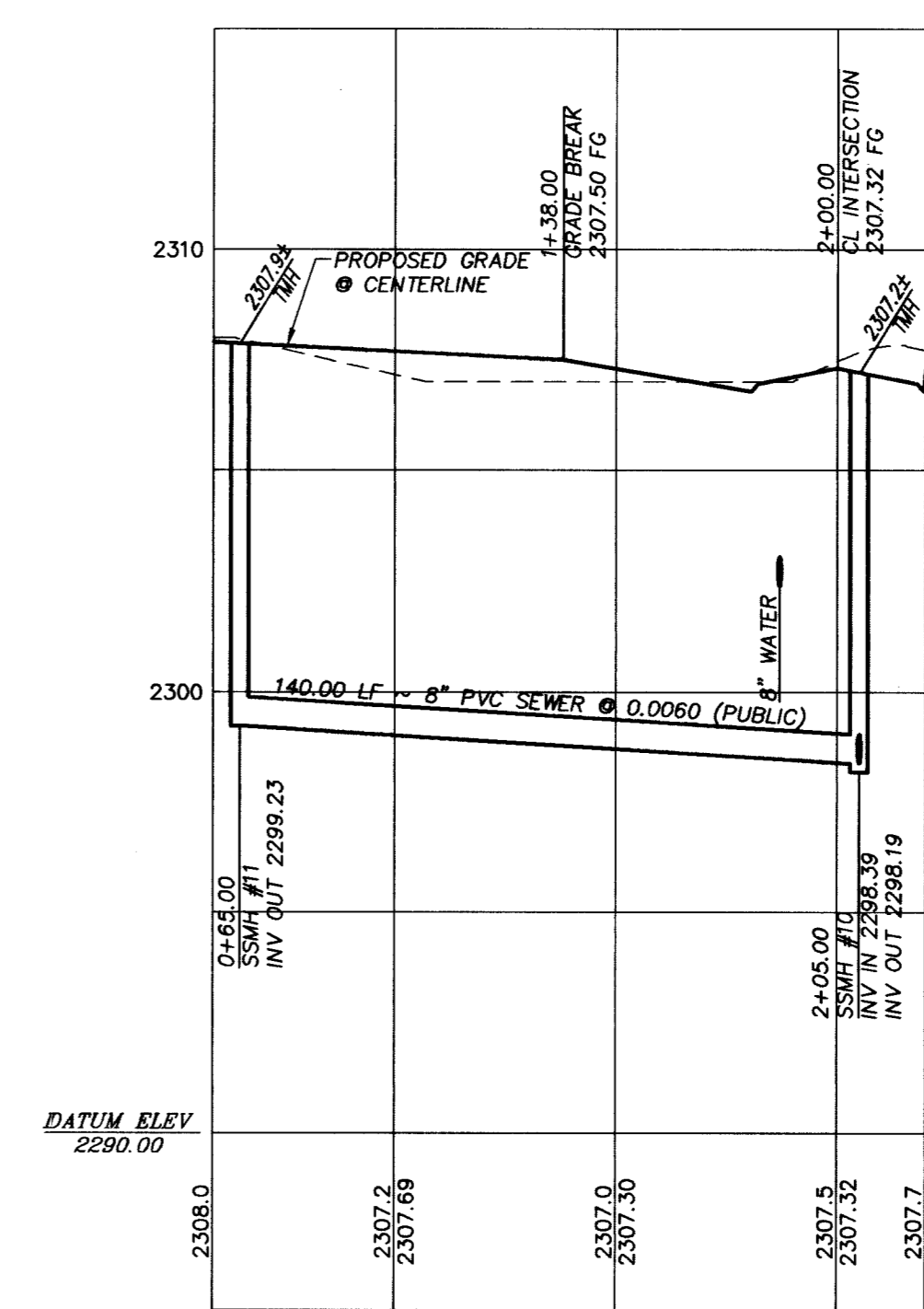
HOUGHTON LODGE
(PRIVATE)



LONGSTOCK
(PRIVATE)



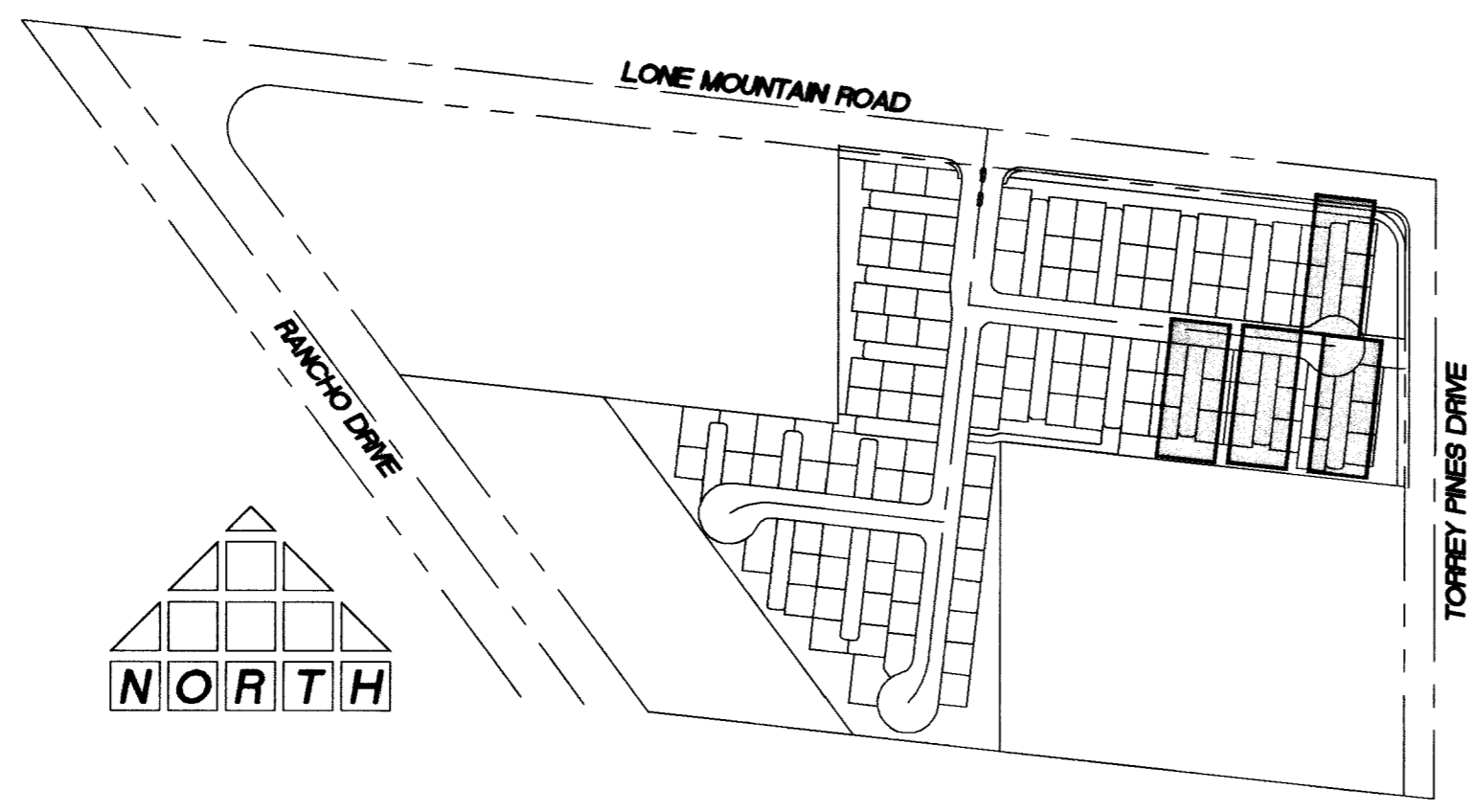
MANDERSTON
(PRIVATE)



MEREWORTH
(PRIVATE)

BASIS OF BEARINGS
SOUTH 00°04'13" WEST BEING THE BEARING OF THE EAST LINE OF THE NORTHEAST QUARTER (NE 1/4) OF THE NORTHWEST QUARTER (NW 1/4) OF SECTION 2, TOWNSHIP 20 SOUTH, RANGE 60 EAST, M.D.M., CITY OF LAS VEGAS, CLARK COUNTY, NEVADA AS SHOWN ON THE MAP ON FILE IN THE CLARK COUNTY RECORDER'S OFFICE, CLARK COUNTY, NEVADA IN FILE 99 OF PARCEL MAPS, AT PAGE 42.

BENCHMARK
CLV #0000 2NNW6
RIVET AND PLATE IN TOP OF CURB @ SE CORNER OF LONE MOUNTAIN AND RANCHO.
ELEVATION (NAVD 88): 706.7908 METERS
2318.86 FEET



KEYMAP
NOT TO SCALE

CURVE	LENGTH	RADIUS	TANGENT	DELTA
C1	43.85'	30.00'	26.89'	83°45'03"
C2	39.27'	25.00'	25.00'	90°00'00"
C3	39.27'	25.00'	25.00'	90°00'00"
C4	9.42'	3.00'	---	180°00'00"
C5	28.54'	100.00'	13.35'	151°21'33"
C6	26.54'	100.00'	13.35'	151°21'33"
C7	23.56'	15.00'	15.00'	90°00'00"
C8	23.56'	15.00'	15.00'	90°00'00"
C9	16.97'	20.00'	9.03'	48°36'43"
C10	195.96'	40.50'	35.69'	277°13'25"
C11	23.56'	15.00'	15.00'	90°00'00"
C12	23.56'	15.00'	15.00'	90°00'00"
C13	24.85'	20.00'	14.32'	71°11'49"
C14	177.56'	40.50'	56.57'	251°11'49"
C15	24.85'	20.00'	14.32'	71°11'49"
C16	177.56'	40.50'	56.57'	251°11'49"

LEGEND

- PROPERTY LINE / RIGHT-OF-WAY
- "L" TYPE CURB AND GUTTER
- "A" TYPE CURB
- EXISTING CURB AND GUTTER
- PROPOSED WATER LINE (SIZE AS SHOWN)
- PROPOSED SEWER LINE (SIZE AS SHOWN)
- EXISTING UTILITY (AS SHOWN)
- CROSS GUTTER
- HANDICAP RAMP
- PROPOSED PAVEMENT AREA
- EXISTING PAVEMENT TO BE REMOVED AND REPLACED
- PROPOSED ELEVATION (DESCRIPTION AS SHOWN)
- EXISTING ELEVATION (DESCRIPTION AS SHOWN)
- FUTURE DESIGN ELEVATION (DESCRIPTION AS SHOWN)
- 10 LOT NUMBER

CONSTRUCTION NOTES

- 1) CONSTRUCT "L" TYPE CURB AND GUTTER PER CCASD 216
- 2) CONSTRUCT "A" TYPE CURB PER CCASD 219
- 3) CONSTRUCT CROSS GUTTER PER CCASD 228
- 4) CONSTRUCT 5' SIDEWALK PER CCASD 234
- 5) CONSTRUCT SIDEWALK UNDERDRAIN PER CCASD 236
- 6) CONSTRUCT SIDEWALK RAMP PER CCASD 235 CASE I A=8, B=8 UNLESS NOTED OTHERWISE
- 7) CONSTRUCT DEPRESSED CURB PER CCASD 227
- 8) SAWCUT AND MATCH EXISTING @ CENTERLINE
- 9) REMOVE AND RECONSTRUCT CURB, GUTTER AND SIDEWALK
- 10) ADJUST EXISTING UTILITY TO GRADE
- 11) CONSTRUCT WROUGHT IRON FENCE PER CLV DWG 421 PER DETAIL ON SHEET D2
- 12) CONSTRUCT BEEHIVE DROP INLET PER CCASD 416
- 13) CONSTRUCT DRAINAGE EASEMENT PER CLV DWG 421 PER DETAIL ON SHEET D2

Avoid cutting underground utility lines. It's costly.

Call before you Dig
1-800-227-2600
UNDERGROUND SERVICE (USA)

Avoid overhead power line contact.

Call before you Overhead
1-702-593-6111
NEVADA POWER OVERHEAD SAFETY SERVICES DEPARTMENT

CALL BEFORE YOU DIG
CALL BEFORE YOU OVERHEAD

DESIGNED BY:	PROJECT NO:	001.04015
CHECKED BY:	SCALE:	1"=40' 1"=4'
DRAWN BY:	REV. DATE BY:	

THOMASON CONSULTING ENGINEERS
3161 E. WARM SPRINGS ROAD, SUITE 200
LAS VEGAS, NEVADA 89120
702-932-6125 FAX: 702-932-6129

RICHMOND AMERICAN HOMES
LONE MOUNTAIN / TORREY PINES
PLAN AND PROFILE - HOUGHTON LODGE CT., LONGSTOCK CT.,
MANDERSTON CT., AND MEREWORTH CT.

1/12/05

CIVIL

11907

SHEET **P7** OF 21
DRAWING NO. 107448514