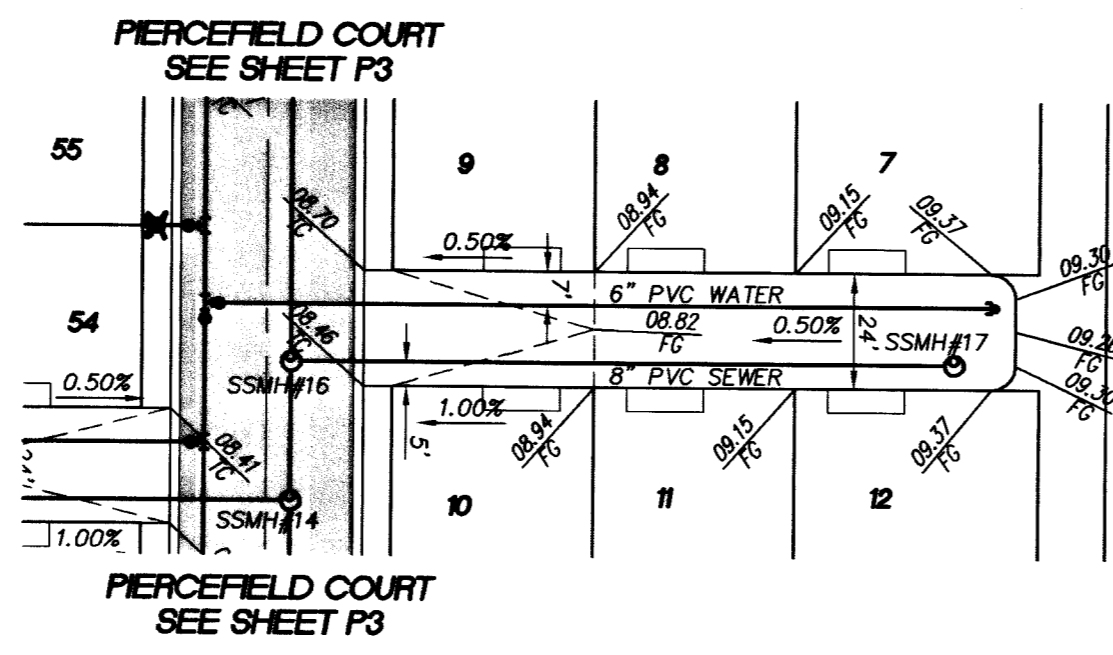
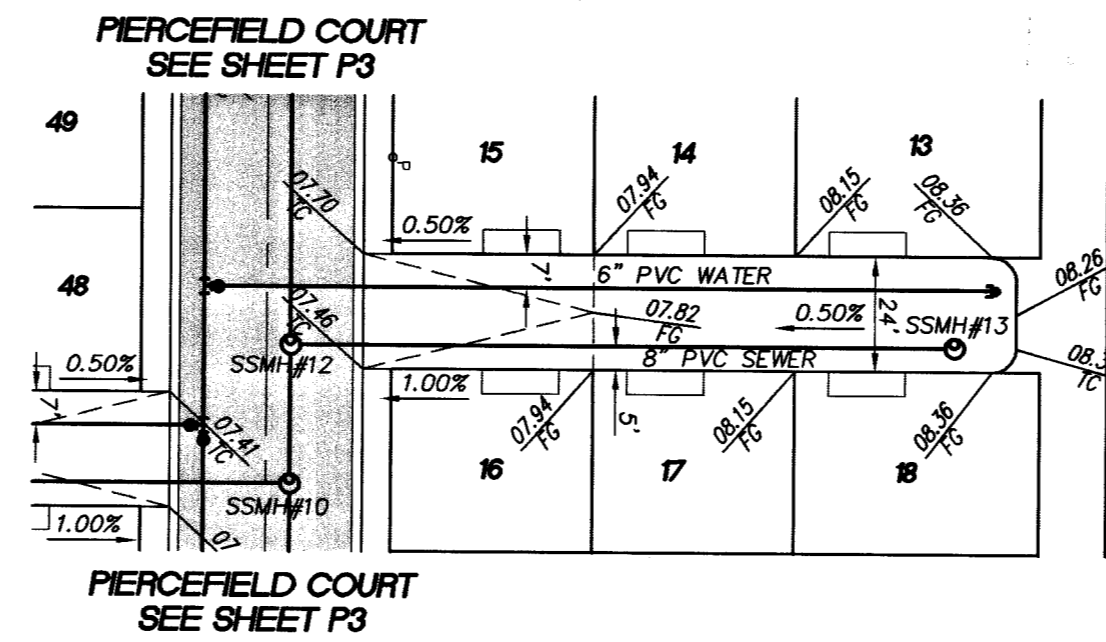


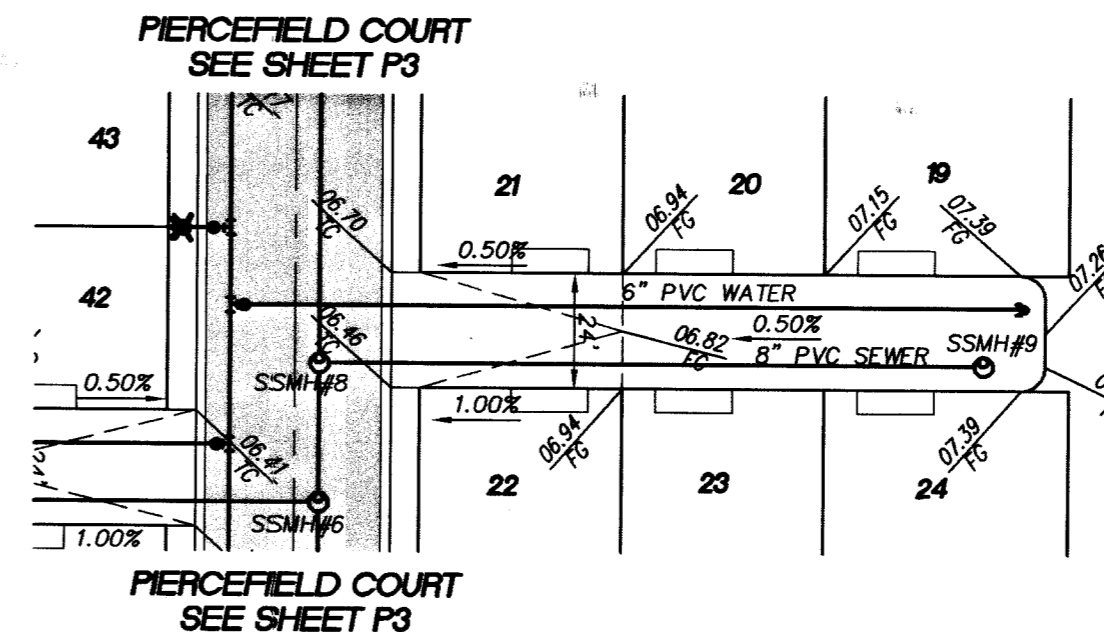
CANNON HILL  
(PRIVATE)



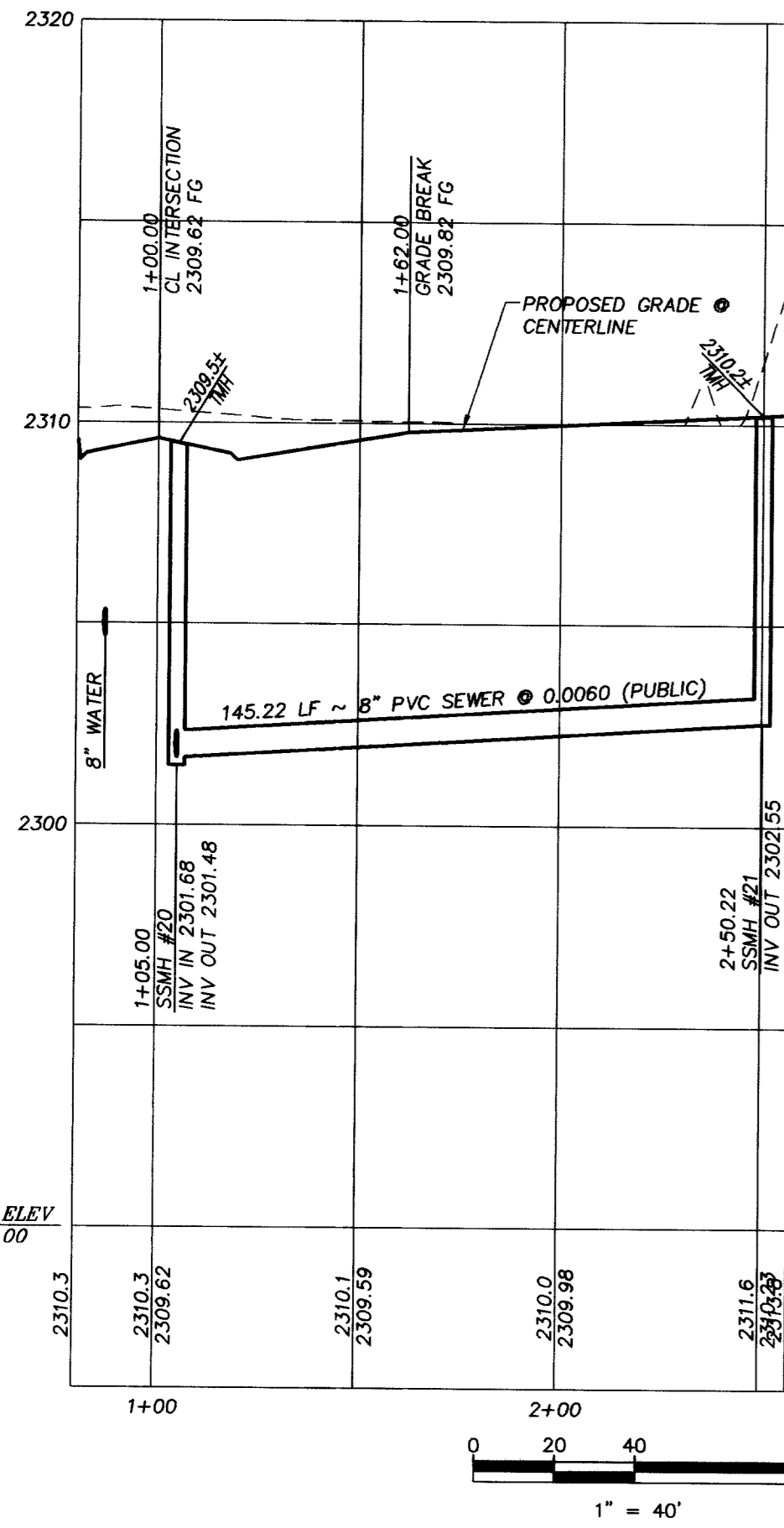
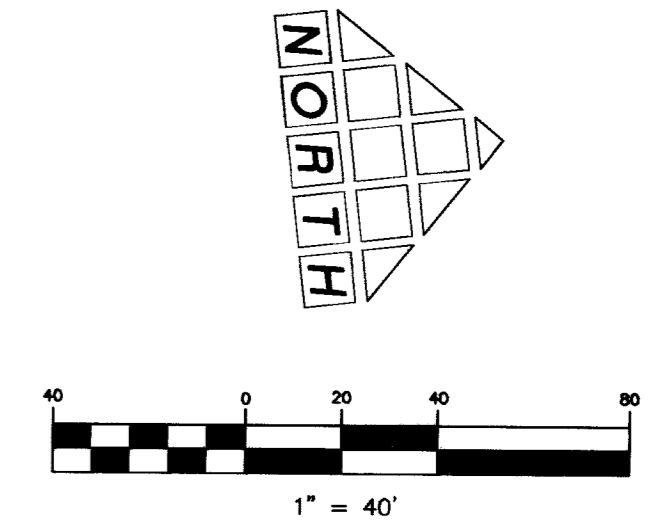
DRUMMOND CASTLE  
(PRIVATE)



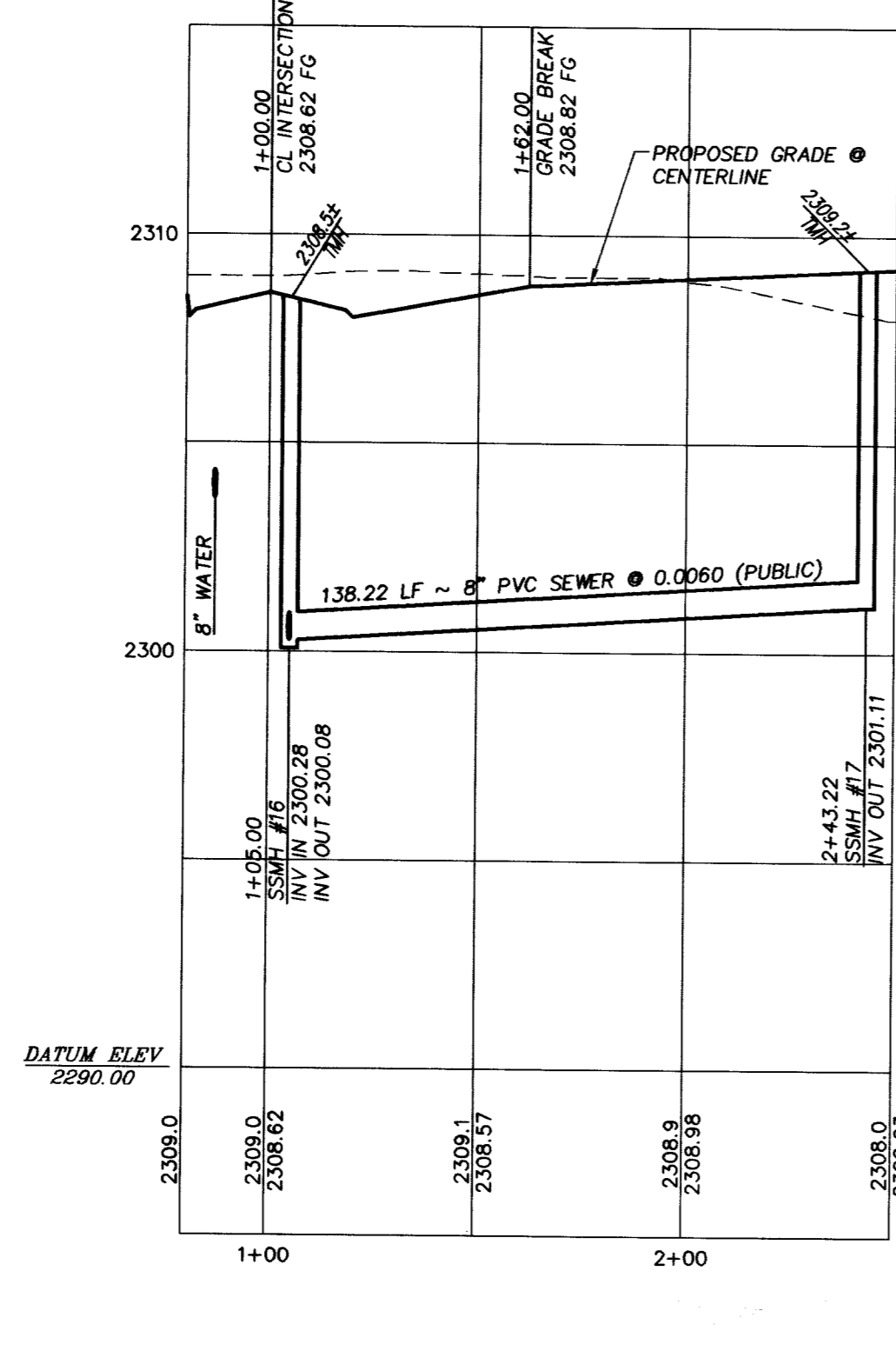
GREENCOMB  
(PRIVATE)



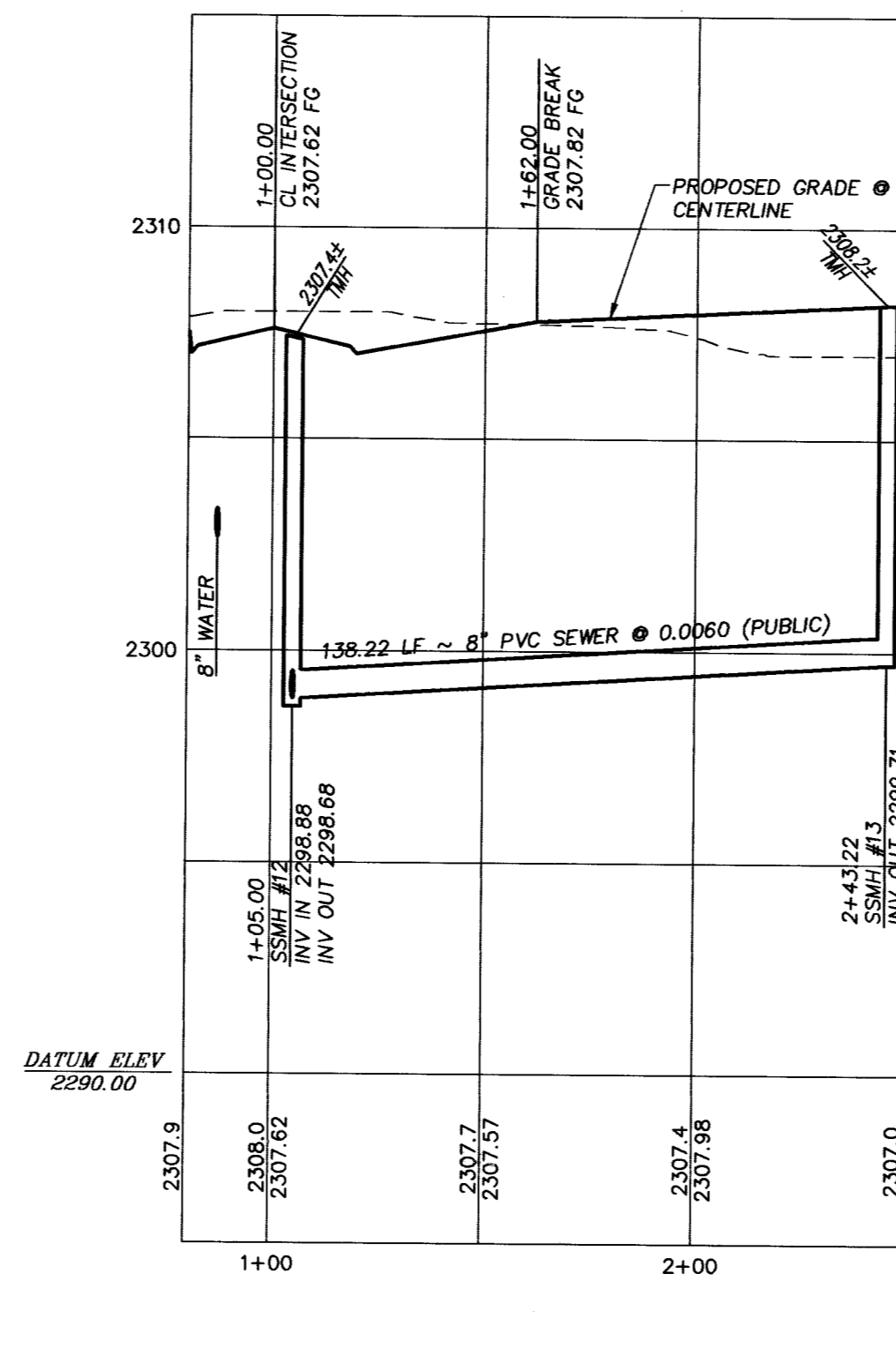
HAMPSTEAD HEATH  
(PRIVATE)



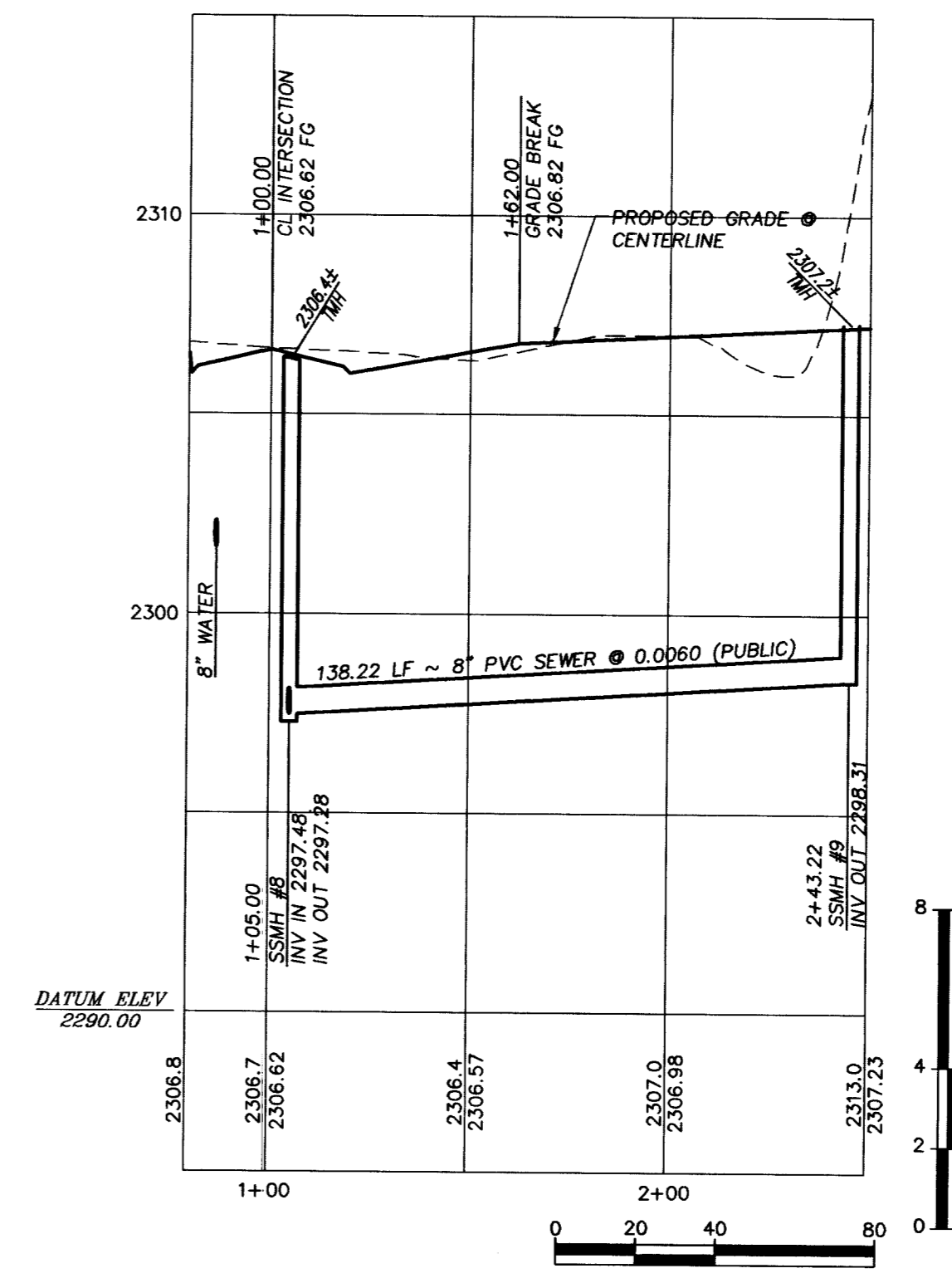
CANNON HILL  
(PRIVATE)



DRUMMOND CASTLE  
(PRIVATE)



GREENCOMB  
(PRIVATE)



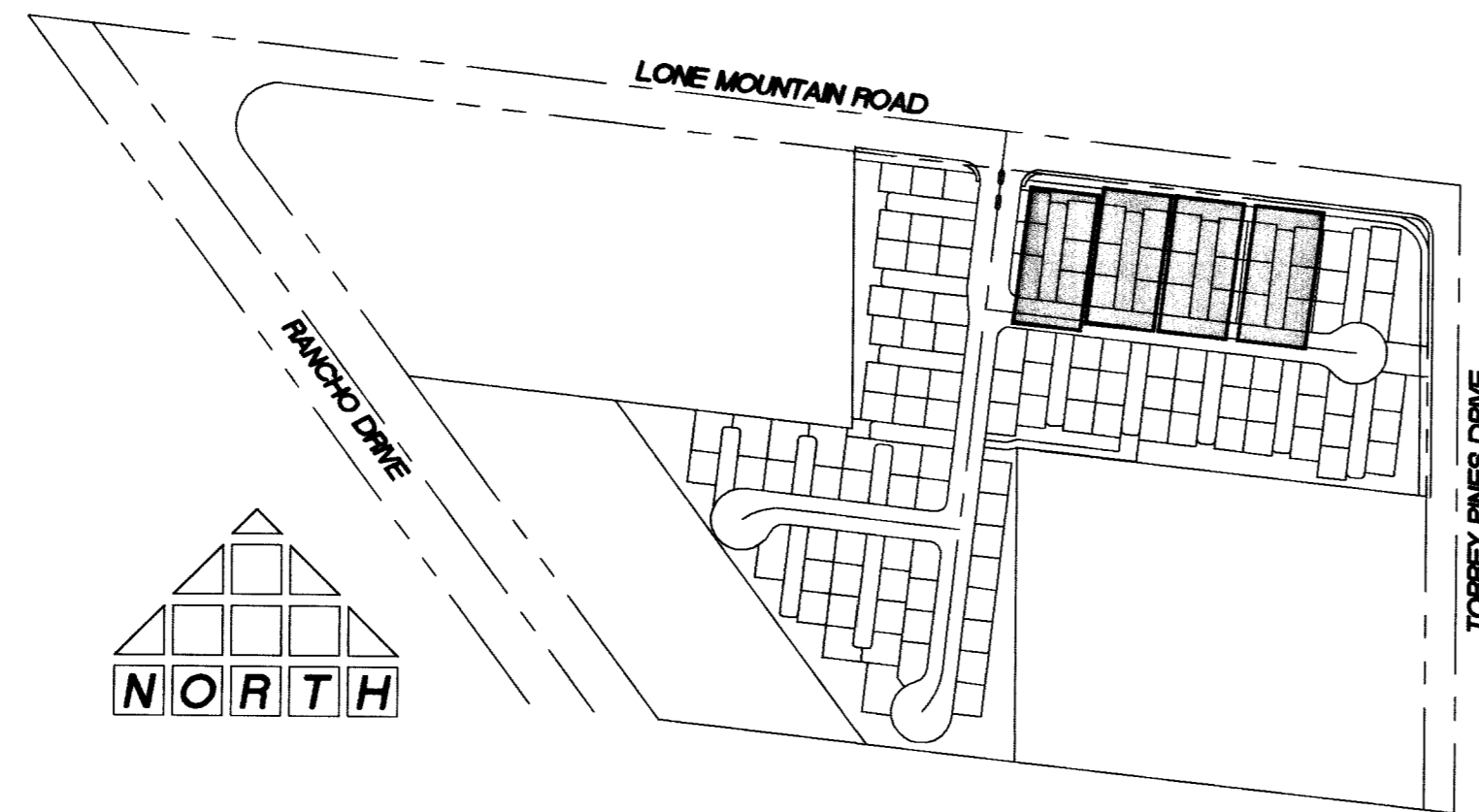
HAMPSTEAD HEATH  
(PRIVATE)

**BASIS OF BEARINGS**

SOUTH 00°04'13" WEST BEING THE BEARING OF THE EAST LINE OF THE NORTHEAST QUARTER (NE 1/4) OF THE NORTHWEST QUARTER (NW 1/4) OF SECTION 2, TOWNSHIP 20 SOUTH, RANGE 80 EAST, M.D.M., CITY OF LAS VEGAS, CLARK COUNTY, NEVADA AS SHOWN ON THE MAP ON FILE IN THE CLARK COUNTY RECORDER'S OFFICE, CLARK COUNTY, NEVADA IN FILE 99 OF PARCEL MAPS, AT PAGE 42.

**BENCHMARK**

CLV #0000 2NNW6  
RIVET AND PLATE IN TOP OF CURB @ SE CORNER OF LONE MOUNTAIN AND RANCHO.  
ELEVATION (NAVD 88): 706.7908 METERS  
2318.86 FEET



KEYMAP  
NOT TO SCALE

CURVE	LENGTH	RADIUS	TANGENT	DELTA
C1	43.85'	30.00'	26.89'	83°45'03"
C2	39.27'	25.00'	25.00'	90°00'00"
C3	39.27'	25.00'	25.00'	90°00'00"
C4	9.42'	3.00'	—	157°13'11"
C5	26.54'	100.00'	13.35'	180°00'00"
C6	26.54'	100.00'	13.35'	157°13'11"
C7	23.56'	15.00'	15.00'	90°00'00"
C8	23.56'	15.00'	15.00'	90°00'00"
C9	16.97'	20.00'	9.03'	48°36'43"
C10	195.96'	40.50'	35.69'	277°13'25"
C11	23.56'	15.00'	15.00'	90°00'00"
C12	23.56'	15.00'	15.00'	90°00'00"
C13	24.85'	20.00'	14.32'	71°11'49"
C14	177.56'	40.50'	56.57'	251°11'49"
C15	24.85'	20.00'	14.32'	71°11'49"
C16	177.56'	40.50'	56.57'	251°11'49"

**LEGEND**

- — — — — PROPERTY LINE / RIGHT-OF-WAY
- L" TYPE CURB AND GUTTER
- "A" TYPE CURB
- — — — — EXISTING CURB AND GUTTER
- — — — — PROPOSED WATER LINE (SIZE AS SHOWN)
- — — — — PROPOSED SEWER LINE (SIZE AS SHOWN)
- — — — — EXISTING UTILITY (AS SHOWN)
- — — — — CROSS GUTTER
- — — — — HANDICAP RAMP
- — — — — PROPOSED PAVEMENT AREA
- — — — — EXISTING PAVEMENT TO BE REMOVED AND REPLACED
- — — — — PROPOSED ELEVATION (DESCRIPTION AS SHOWN)
- — — — — EXISTING ELEVATION (DESCRIPTION AS SHOWN)
- — — — — FUTURE DESIGN ELEVATION (DESCRIPTION AS SHOWN)
- 10 LOT NUMBER

**CONSTRUCTION NOTES**

- (1) CONSTRUCT "L" TYPE CURB AND GUTTER PER CCASD 216
- (2) CONSTRUCT "A" TYPE CURB PER CCASD 219
- (3) CONSTRUCT CROSS GUTTER PER CCASD 228
- (4) CONSTRUCT 5' SIDEWALK PER CCASD 234
- (5) CONSTRUCT SIDEWALK UNDERDRAIN PER CCASD 236
- (6) CONSTRUCT SIDEWALK RAMP PER CCASD 235 CASE 1  
A=8, B=8 UNLESS NOTED OTHERWISE
- (7) CONSTRUCT DEPRESSED CURB PER CCASD 227
- (8) SAWCUT AND MATCH EXISTING @ CENTERLINE
- (9) REMOVE AND RECONSTRUCT CURB, GUTTER AND SIDEWALK
- (10) ADJUST EXISTING UTILITY TO GRADE
- (11) CONSTRUCT WROUGHT IRON FENCE PER CLV DWG 421  
PER DETAIL ON SHEET D2
- (12) CONSTRUCT BEEHIVE DROP INLET PER CCASD 416
- (13) CONSTRUCT DRAINAGE EASEMENT PER CLV DWG 421  
PER DETAIL ON SHEET D2

Avoid cutting underground utility lines. If's costly.  
**Call before you Dig**  
1-800-227-2600  
UNDERGROUND SERVICE (USA)

Avoid overhead power line contact!  
**Call before you Overhead**  
1-702-593-6111  
NEVADA POWER ENVIRONMENTAL SAFETY SERVICE DEPARTMENT

Call before you Dig  
Underground  
1-702-593-6111  
1-702-227-2600

77009

PROJECT NO. 001.04015  
SCALE: 1"=40'  
1"=4'

**T THOMASON CONSULTING ENGINEERS**  
3161 E. WARM SPRINGS ROAD, SUITE 200  
LAS VEGAS, NEVADA 89120  
702-932-6125 FAX: 702-932-6129

**RICHMOND AMERICAN HOMES**  
LONE MOUNTAIN / TORREY PINES  
PLAN AND PROFILE - CANNON HILL CT., DRUMMOND CASTLE CT.,  
GREENCOMBE CT., AND HAMPSTEAD HEATH CT.

PROFESSIONAL ENGINEER STATE OF NEVADA  
JOSHUA M. OWEN  
Exp. 12/19/05  
CIVIL  
No. 15748  
1/12/05

SHEET **P6**  
14 OF 21  
DRAWING NO. 10744854

P:\001\04015\00104015-PROFILES.dwg 1/12/2005 9:33:07 AM PST