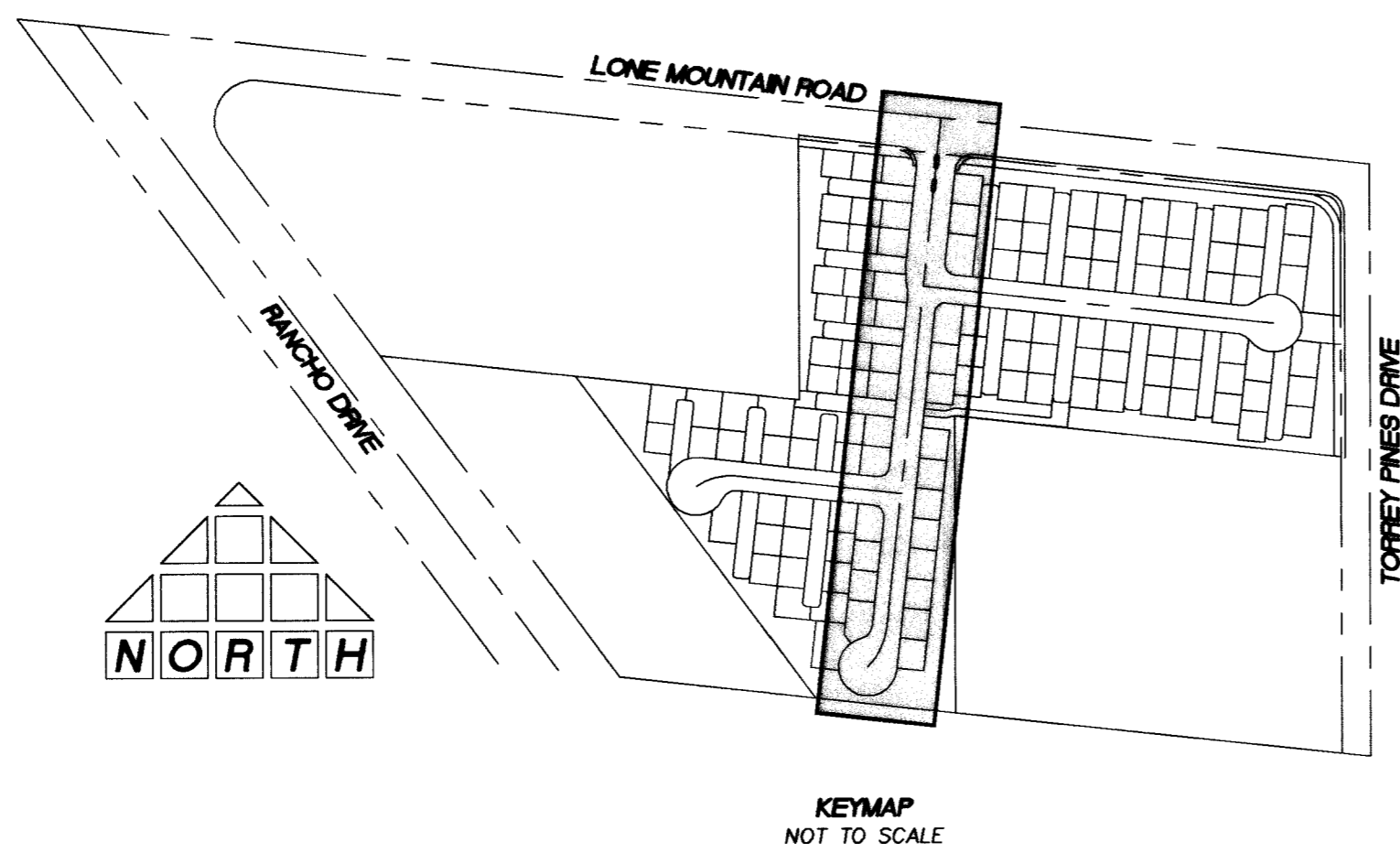


**BASIS OF BEARINGS**  
 SOUTH 00°04'13" WEST BEING THE BEARING OF THE EAST LINE OF THE NORTHEAST QUARTER (NE 1/4) OF THE NORTHWEST QUARTER (NW 1/4) OF SECTION 2, TOWNSHIP 20 SOUTH, RANGE 60 EAST, M.D.M., CITY OF LAS VEGAS, CLARK COUNTY, NEVADA AS SHOWN ON THE MAP ON FILE IN THE CLARK COUNTY RECORDER'S OFFICE, CLARK COUNTY, NEVADA IN FILE 99 OF PARCEL MAPS, AT PAGE 42.

**BENCHMARK**  
 CLV #0000 2NNWS  
 RIVET AND PLATE IN TOP OF CURB @ SE CORNER OF LONE MOUNTAIN AND RANCHO.  
 ELEVATION (NAVD 88): 706.7908 METERS  
 2318.86 FEET



CURVE DATA				
CURVE	LENGTH	RADIUS	TANGENT	DELTA
C1	43.85'	30.00'	26.89'	83°45'03"
C2	39.27'	25.00'	25.00'	90°00'00"
C3	39.27'	25.00'	25.00'	90°00'00"
C4	9.42'	3.00'	---	180°00'02"
C5	26.54'	100.00'	13.35'	15°12'13"
C6	26.54'	100.00'	13.35'	15°12'13"
C7	23.56'	15.00'	15.00'	90°00'00"
C8	23.56'	15.00'	15.00'	90°00'00"
C9	16.97'	20.00'	9.03'	48°36'43"
C10	195.96'	40.50'	35.69'	27°13'25"
C11	23.56'	15.00'	15.00'	90°00'00"
C12	23.56'	15.00'	15.00'	90°00'00"
C13	24.85'	20.00'	14.32'	71°11'49"
C14	177.56'	40.50'	56.57'	25°11'49"
C15	24.85'	20.00'	14.32'	71°11'49"
C16	177.56'	40.50'	56.57'	25°11'49"

- LEGEND**
- PROPERTY LINE / RIGHT-OF-WAY
  - "L" TYPE CURB AND GUTTER
  - - - "A" TYPE CURB
  - - - EXISTING CURB AND GUTTER
  - PROPOSED WATER LINE (SIZE AS SHOWN)
  - PROPOSED SEWER LINE (SIZE AS SHOWN)
  - - - EXISTING UTILITY (AS SHOWN)
  - CROSS GUTTER
  - HANICAP RAMP
  - PROPOSED PAVEMENT AREA
  - XXXXXX EXISTING PAVEMENT TO BE REMOVED AND REPLACED
  - PROPOSED ELEVATION (DESCRIPTION AS SHOWN)
  - EXISTING ELEVATION (DESCRIPTION AS SHOWN)
  - FUTURE DESIGN ELEVATION (DESCRIPTION AS SHOWN)
  - 10 LOT NUMBER

- CONSTRUCTION NOTES**
1. CONSTRUCT "L" TYPE CURB AND GUTTER PER CCASD 216
  2. CONSTRUCT "A" TYPE CURB PER CCASD 219
  3. CONSTRUCT CROSS GUTTER PER CCASD 228
  4. CONSTRUCT 5' SIDEWALK PER CCASD 234
  5. CONSTRUCT SIDEWALK UNDERDRAIN PER CCASD 236
  6. CONSTRUCT SIDEWALK RAMP PER CCASD 235 CASE 1 A=B, B=θ, UNLESS NOTED OTHERWISE
  7. CONSTRUCT DEPRESSED CURB PER CCASD 227
  8. SAWCUT AND MATCH EXISTING @ CENTERLINE
  9. REMOVE AND RECONSTRUCT CURB, GUTTER AND SIDEWALK
  10. ADJUST EXISTING UTILITY TO GRADE
  11. CONSTRUCT WROUGHT IRON FENCE PER CLV DWG 421 PER DETAIL ON SHEET D2
  12. CONSTRUCT BEEHIVE DROP INLET PER CCASD 416
  13. CONSTRUCT DRAINAGE EASEMENT PER CLV DWG 421 PER DETAIL ON SHEET D2

Call before you dig  
 1-800-227-2600  
 UNDERGROUND SERVICE (USA)

Call before you Overhead  
 1-702-593-6111  
 NEVADA POWER ENVIRONMENTAL SAFETY SERVICES DEPARTMENT

Call before you dig  
 1-702-455-7511  
 1-702-229-6611

PROJECT NO. 001.04015  
 SCALE: 1"=40'  
 1"=4'

**THOMASON CONSULTING ENGINEERS**  
 3161 E. WARM SPRINGS ROAD, SUITE 200  
 LAS VEGAS, NEVADA 89120  
 702-932-6125 FAX: 702-932-6129

**RICHMOND AMERICAN HOMES**  
 LONE MOUNTAIN / TORREY PINES  
 PLAN AND PROFILE  
 PRIORY GARDENS STREET

1/12/05  
 SHEET **P9** OF 21  
 DRAWING NO. 10744854