

WATER QUANTITIES

A	INSTALL FIRE HYDRANT ASSEMBLY PER UDACS STD. PLATE NO. 7
B	1" MVR METER
C	1" K COPPER LATERAL PER UDACS PLATE 11B
D	1" IRRIGATION METER PER UDACS PLATE #10
E	1" RPPA PER UDACS PLATE #11A
F	6" CAP AND BLOWOFF ASSEMBLY PER UDACS STD. PLATE NO. 4A
G	8" CAP AND BLOWOFF ASSEMBLY PER UDACS STD. PLATE NO. 4A
H	12" CAP AND BLOWOFF ASSEMBLY PER UDACS STD. PLATE NO. 4A
I	6" GATE VALVE PER UDACS STD. PLATE NO. 8
J	8" GATE VALVE PER UDACS STD. PLATE NO. 8
K	12" GATE VALVE PER UDACS STD. PLATE NO. 8
L	8" TEE
M	8"x6" TEE
N	10"x8" TEE
O	8"x6" CROSS
P	8"x6" REDUCER
Q	10"x8" REDUCER
R	8" 45° BEND
S	8" 90° BEND
T	10" 90° BEND
U	10" GATE VALVE PER UDACS STD. PLATE NO. 8
V	12"x10" TEE
W	NOT USED
X	CONNECT TO EXISTING PER UDACS PLATE 4A

SEWER QUANTITIES

A	CONSTRUCT STANDARD ECCENTRIC MANHOLE PER DCSWCS PLATE SD-1
B	CONSTRUCT SPECIAL MANHOLE "B" PER DCSWCS PLATE SD-10
C	INSTALL SEWER LATERAL PER DCSWCS PLATE SD-17

REDUCED PRESSURE PRINCIPLE ASSEMBLY-(3) 1"
 APPROVED REDUCED PRESSURE PRINCIPLE ASSEMBLY(S) SHALL BE INSTALLED PER THE UDACS PLATE NO. 11A. NO WATER SHALL BE TAKEN FROM A SERVICE REQUIRING BACKFLOW PREVENTION UNTIL THE REDUCED PRESSURE PRINCIPLE ASSEMBLY HAS BEEN SUCCESSFULLY TESTED BY THE LVWD.

ANY BLOCK WALL OR OTHER FENCE MATERIAL SHALL BE DESIGNED AND CONSTRUCTED AROUND THE OUTSIDE OF THE EASEMENT(S) TO ALLOW THE DISTRICT DIRECT ACCESS FROM THE ADJACENT RIGHT-OF-WAY.

EASEMENTS SHALL BE CLEARLY MARKED OR STAKED PRIOR TO THE START OF CONSTRUCTION.

NOTE:
 INSTALL PIPELINE MARKER BALLS IN TRENCH ABOVE EACH HORIZONTAL ELBOW FITTING, PER UDACS PLATE NO. 27. ESN.062

ALL SEWER/STORM DRAINS CROSSING WATER LINES MUST CONFORM TO SECTION 2.19 OF THE UNIFORM DESIGN AND CONSTRUCTION STANDARDS FOR POTABLE WATER SYSTEMS (UDACS) FOR WATER AND STORM MAIN CROSSINGS AND CLEARANCES. 06/01/04

FIRE SPRINKLER SYSTEM SHALL BE PLUMBED TO MASTER TOILET. NO EXCEPTIONS ALLOWED.

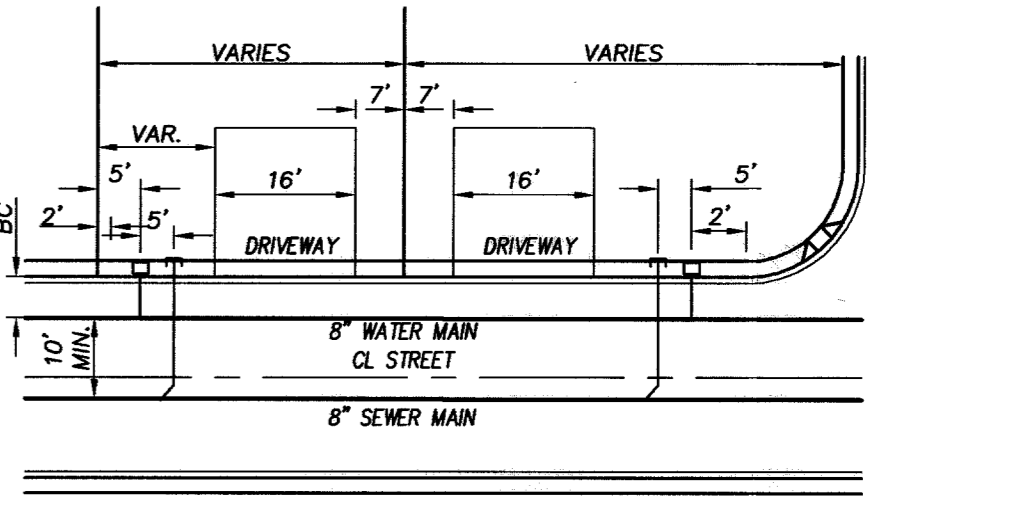
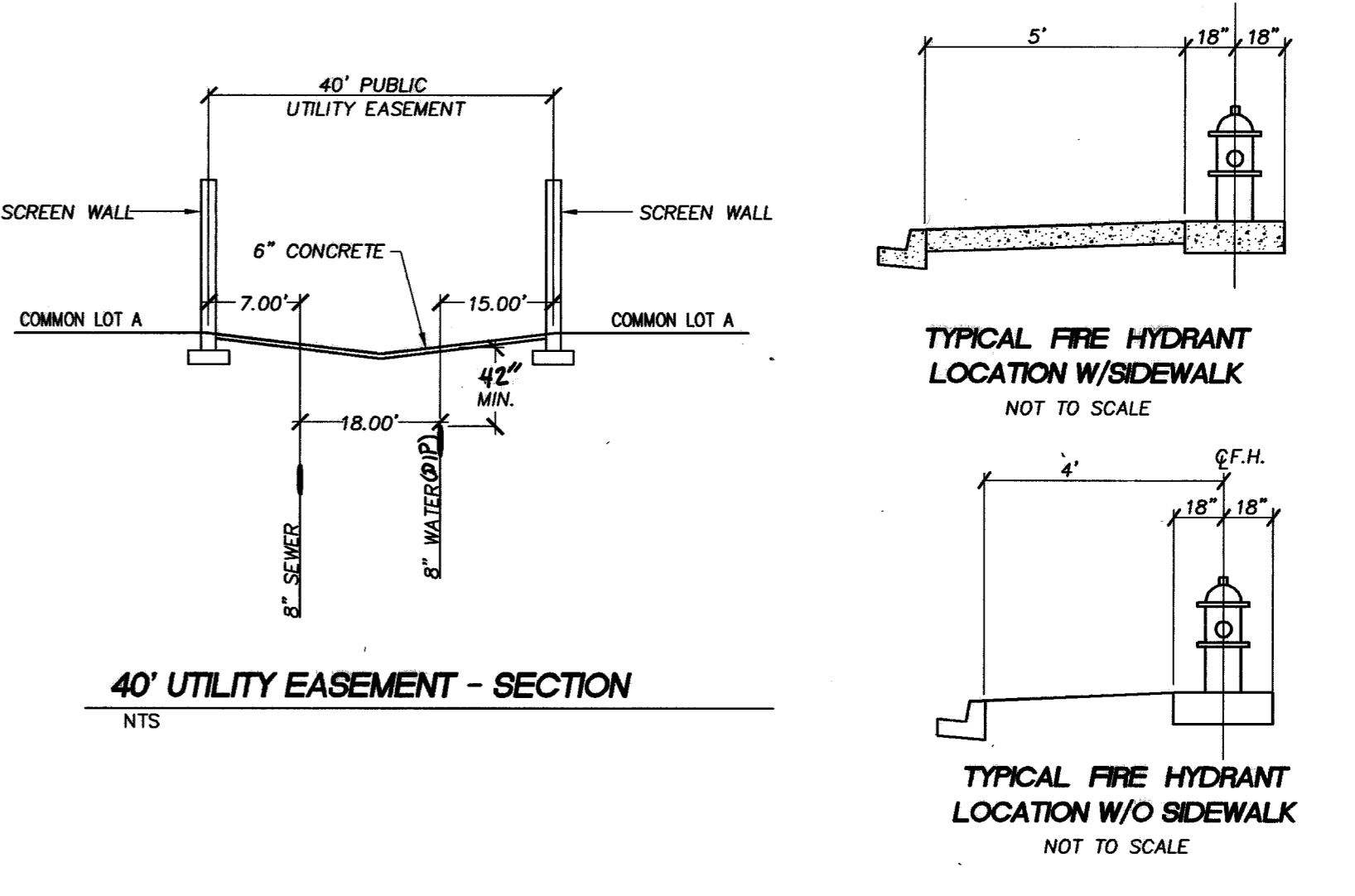
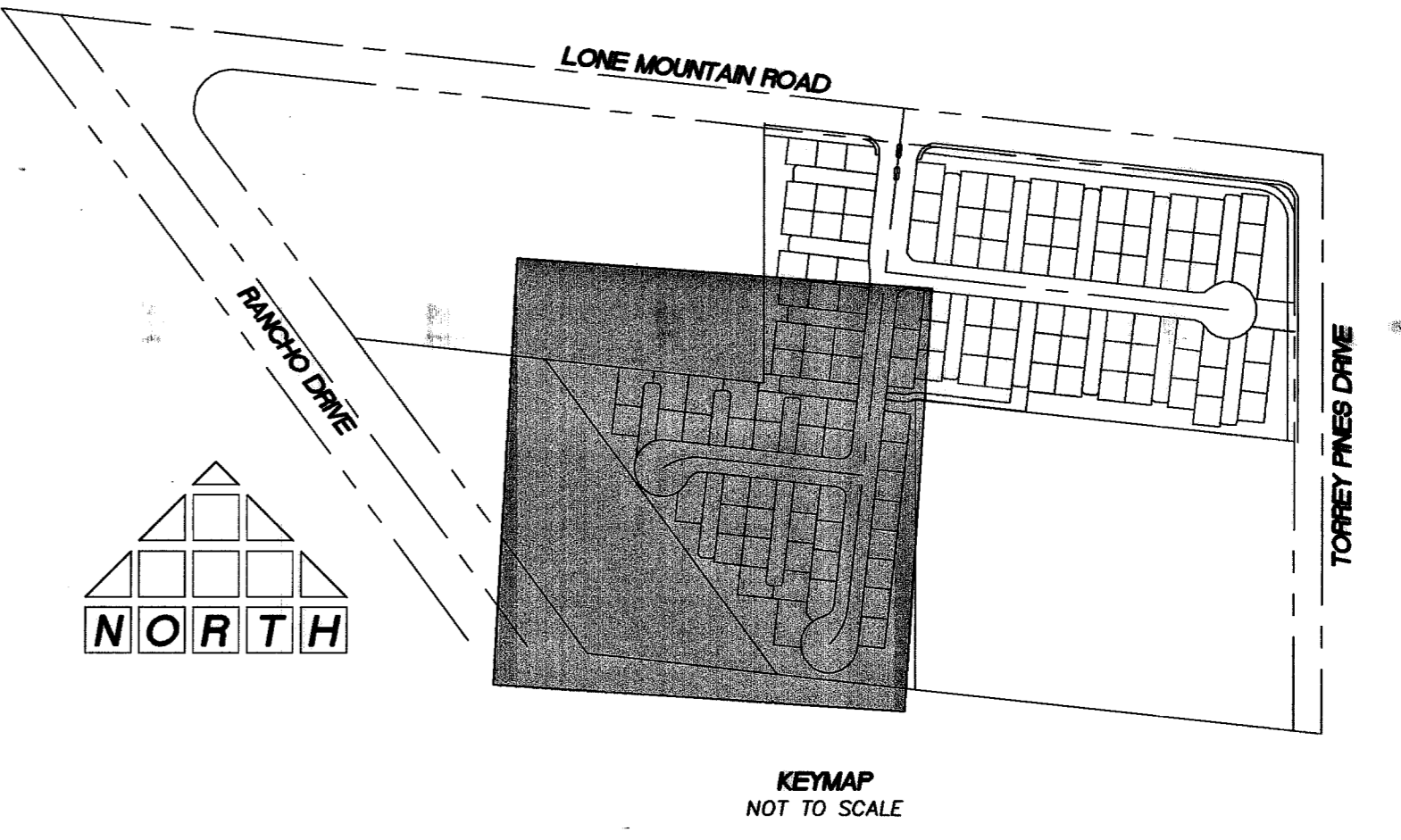
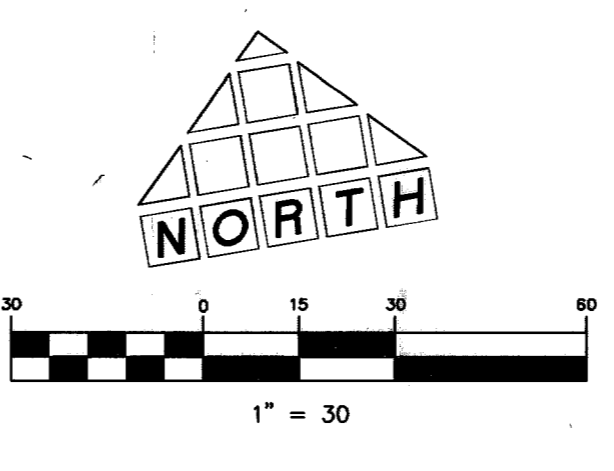
WATERMAIN JOINT DEFLECTION (PVC, 4"-24")
 PVC PIPE SHALL BE DEFLECTED AT THE JOINT ONLY. THE MAXIMUM ALLOWABLE DEFLECTION SHALL BE ONE (1) DEGREE PER JOINT WITH A MINIMUM RADIUS OF CURVATURE OF 1,150 FEET, PER UDACS 2.06.01 AND 2.06.02.

7700316 71495

Call before you Dig
 1-800-227-2800
 UnderGround
 1-702-228-6611

BASIS OF BEARINGS
 SOUTH 00°4'13" WEST BEING THE BEARING OF THE EAST LINE OF THE NORTHEAST QUARTER (NE 1/4) OF THE NORTHWEST QUARTER (NW 1/4) OF SECTION 2, TOWNSHIP 20 SOUTH, RANGE 60 EAST, M.D.M., CITY OF LAS VEGAS, CLARK COUNTY, NEVADA AS SHOWN ON THE MAP ON FILE IN THE CLARK COUNTY RECORDER'S OFFICE, CLARK COUNTY, NEVADA IN FILE 99 OF PARCEL MAPS, AT PAGE 42.

BENCHMARK
 CLV #0000 2N1W6
 RIVET AND PLATE IN TOP OF CURB @ SE CORNER OF LONE MOUNTAIN AND RANCHO.
 ELEVATION (NAVD 88): 706.7908 METERS
 2318.86 FEET



LATERAL NOTES:
 WATER & SEWER SERVICE LATERALS SHALL BE INSTALLED IN SEPARATE TRENCHES A MINIMUM OF 48" APART. WATER LATERALS SHALL BE A MINIMUM OF 12" ABOVE THE SEWER LATERAL (REF. UNIFORM PLUMBING CODE). WATER LATERAL SHALL BE PLACED 18" ABOVE SEWER MAINS AND LATERALS AT CROSSINGS.

APPROVALS
 LAS VEGAS VALLEY WATER DISTRICT PROJECT #13131
 DATE 2/08/05
 CLV FIRE DEPARTMENT DATE 1/11/05

PROJECT NO.	001.04015
SCALE	1"=30'
DESIGNED BY	
CHECKED BY	
DATE	
BY	
REVISION	

THOMASON CONSULTING ENGINEERS
 3161 E. WARRIOR SPRINGS ROAD, SUITE 200
 LAS VEGAS, NEVADA 89119
 702-932-8125 FAX: 702-932-8129

RICHMOND AMERICAN HOMES
 LONE MOUNTAIN / TORREY PINES
 UTILITY PLAN

JOSHUA N OWEN
 CIVIL
 No. 15748
 Exp. 12/31/05
 1/11/05
 SHEET **U2**
 8 OF 21
 DRAWING NO. 10744854

P:\001\04015\00104015-UTILITY.dwg 1/11/2005 12:05:56 PM PST