

EX	STREET NAME	STATION	OFFSET	BM	INVERT IN	INVERT OUT
3	PEACEFUL DAWN AVE.	20+82.62	5.00' LT	2916.12	2903.27	2903.07
4	PEACEFUL DAWN AVE.	22+32.62	5.00' LT	2945.44	2938.70	2938.50
5	PEACEFUL DAWN AVE.	17+82.62	5.00' LT	2976.22	2971.00	2970.80
6	PEACEFUL DAWN AVE.	16+32.62	5.00' LT	2985.75	2978.46	2978.26
7	CLIFF SHADOWS PKWY.	18+38.30	5.00' LT	2915.55	2904.15	2903.95
8	TUCKERMANS AVE.	20+80.65	5.00' RT	2931.63	2914.92	2914.72
9	TUCKERMANS AVE.	16+41.08	5.00' RT	2949.34	2935.09	2934.89
10	TUCKERMANS AVE.	15+91.08	5.00' RT	2968.82	2955.29	2955.09
11	TUCKERMANS AVE.	13+43.00	5.00' RT	2976.12	2965.42	2965.22
12	TUCKERMANS AVE.	12+07.28	5.00' RT	2979.62	2970.86	2970.66
13	WINDBLOWN CT.	11+79.25	5.00' LT	2923.62	N/A	2916.73
14	TRAILHEAD MESA ST.	11+49.74	5.00' LT	2947.62	2935.91	2935.71
15	TRAILHEAD MESA ST.	12+12.17	3.30' LT	2947.22	2936.48	2936.28
16	STEAMBOAT ROCK CT.	9+77.81	5.00' RT	2962.22	N/A	2956.02
17	SNEERING GLEN ST.	13+23.85	5.00' LT	2974.62	N/A	2967.93
18	CLIFF SHADOWS PKWY.	20+84.75	5.00' LT	2914.52	2905.59	2905.39

Handwritten signature and date: 10/28/04
 CLV Fire Marshal

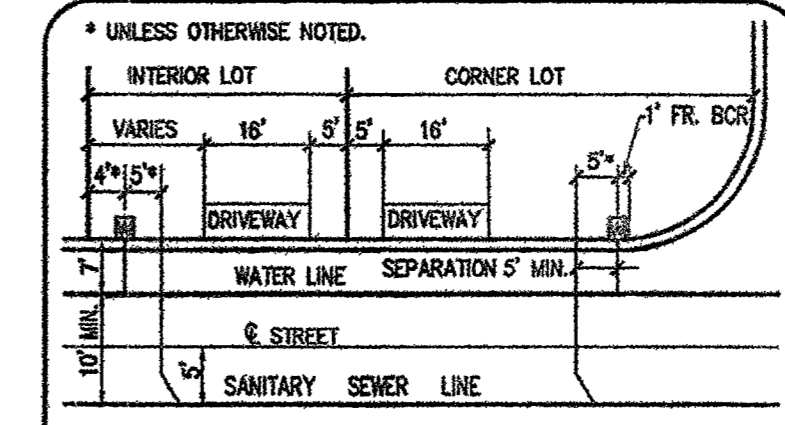
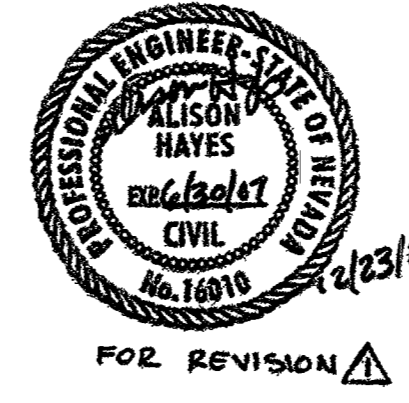
UTILITY NOTE
 1. ALL SEWER/STORM DRAINS CROSSING WATER LINES MUST CONFORM TO SECTION 2.19 OF THE UNIFORM DESIGN AND CONSTRUCTION STANDARDS FOR POTABLE WATER SYSTEMS (UDACS) FOR WATER AND STORM MAIN CROSSINGS AND CLEARANCES. ESN: 064
 2. 18" MIN. SEPARATION BETWEEN SERVICE SADDLES. SEE UDAAC SECTION 3.22.01.C

SEWER CONTRIBUTION
 69 LOTS
 AVERAGE DAILY FLOW (69 x 250) / 24 = 0.02 MGD
 PEAK DAILY FLOW PF = 3 x 0.02 = 0.07 MGD

- WATER CONSTRUCTION NOTES**
- INSTALL 8" 90° BEND WITH THRUST BLOCKS PER UDACS PLATE NO. 5
 - INSTALL FIRE HYDRANT ASSEMBLY PER UDACS PLATE NO. 7.
 - INSTALL 24 x 8" TAPPING SLEEVE W/ 8" TAPPING VALVE
 - INSTALL 8" CROSS TEE
 - INSTALL 8" TEE
 - INSTALL 8" x 6" TEE
 - INSTALL 8" GATE VALVE
 - INSTALL 8" x 6" REDUCER.
 - INSTALL CAP & 2" BL" OFF ASSEMBLY PER UDACS PLATE NO. 4A.
 - INSTALL 1" WATER SERVICE WITH 3/4" METER PER UDACS PLATE NO. 1B (TYP) (SINGLE METER BOX - ARMORCAST BOX - P600048ST LID A600048AT)
 - INSTALL 1-1/2" IRRIGATION METER PER UDACS PLATE NO. 1D
 - INSTALL 1-1/2" RPPA PER UDACS PLATE NO. 11A
 - INSTALL 4" IRRIGATION SLEEVES (2)
 - INSTALL 8" 45° BEND WITH THRUST BLOCKS PER UDACS PLATE NO. 5
 - INSTALL 8" 22.5° BEND WITH THRUST BLOCKS PER UDACS PLATE NO. 5
 - INSTALL 8" 5° BEND SPECIFIED FITTING W/ MECH JOINTS

PRIVATE STREET NOTE
 ALL PRIVATE STREETS ARE P.U.E., PUBLIC SEWER EASEMENTS, AND PUBLIC DRAINAGE EASEMENTS TO BE PRIVATELY MAINTAINED BY HOA.

R.P.P.A. NOTE (2) - 1-1/2"
 APPROVED REDUCED PRESSURE PRINCIPAL ASSEMBLY(S) SHALL BE INSTALLED PER THE UDACS PLATE NO. 11A. NO WATER SHALL BE TAKEN FROM A SERVICE REQUIRING BACKFLOW PREVENTION UNTIL THE REDUCED PRESSURE PRINCIPAL ASSEMBLY HAS BEEN SUCCESSFULLY TESTED BY THE L.V.W.D.
 ANY BLOCK WALL OR OTHER FENCE MATERIAL SHALL BE DESIGNED AND CONSTRUCTED AROUND THE OUTSIDE OF THE EASEMENT(S) TO ALLOW THE DISTRICT DIRECT ACCESS FROM THE ADJACENT RIGHT-OF-WAY.

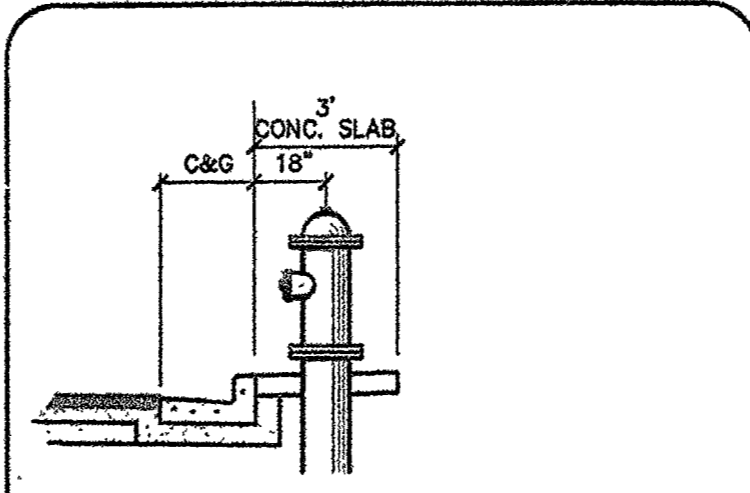


BENCHMARK:
 CITY OF LAS VEGAS BENCHMARK NO. BLV09-INEX BEING A RIVET AND PLATE IN CONCRETE CYLINDER @ NW CORNER OF HUALAPAI AND RED CORNER.
 ELEVATION: 2897.09 FEET OR 822.032 METERS, N.A.V.D. 82.

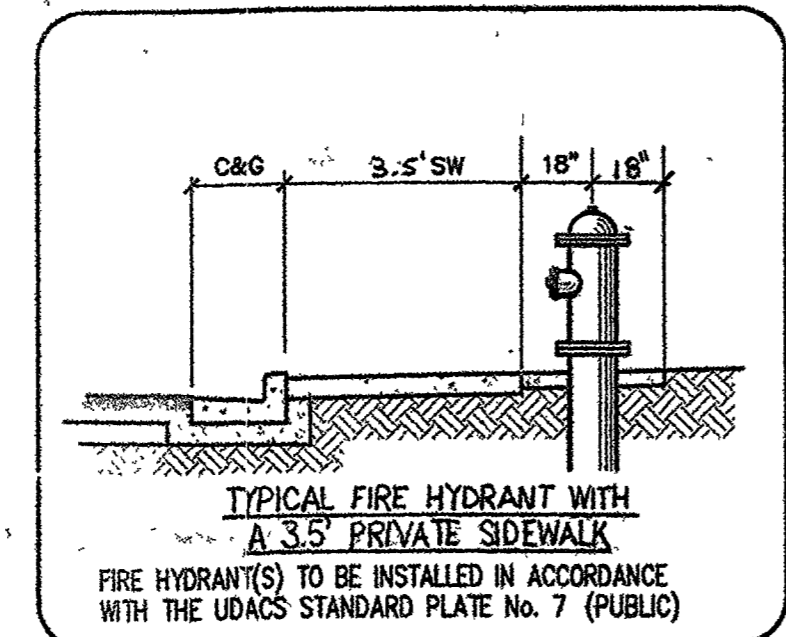
BASIS OF BEARING:
 SOUTH 89°50'00" EAST BEING THE NORTHERLY LINE OF THE NORTHEAST QUARTER (NE 1/4) OF THE NORTHEAST QUARTER (NW 1/4) OF SECTION 1, TOWNSHIP 20 SOUTH, RANGE 59 EAST, M.D.M., CITY OF LAS VEGAS, CLARK COUNTY, NEVADA, AS SHOWN FILE 117 PAGE 29 OF SURVEYS IN THE RECORDER'S OFFICE OF CLARK COUNTY, NEVADA.

- GENERAL NOTES:**
- SEE SHEET 2 FOR WATER AND UTILITY QUANTITIES
 - ALL WATER FACILITIES CONSTRUCTION SHALL BE IN ACCORDANCE WITH THE "UNIFORM DESIGN AND CONSTRUCTION STANDARDS FOR WATER DISTRIBUTION SYSTEMS" (UDACS), LATEST EDITION.
 - WATER AND SEWER SERVICES LATERALS SHALL BE INSTALLED A MINIMUM OF FORTY-EIGHT (48) INCHES APART IN SEPARATE TRENCHES. WATER LATERALS SHALL BE A MINIMUM OF TWELVE (12) INCHES ABOVE THE SEWER LATERAL (REF. UNIFORM PLUMBING CODE).
 - INSTALL PIPELINE MARKER BALLS IN TRENCH ABOVE EACH HORIZONTAL ELBOW FITTING, PER UDACS PLATE NO. 27
 - SEE THIS SHEET FOR SEWER MANHOLE SCHEDULE
 - ALL PRIVATE STREET/DRIVES ARE PUBLIC DRAINAGE EASEMENTS, CLV SEWER AND PUE EASEMENTS TO BE PRIVATELY MAINTAINED BY THE HOMEOWNERS ASSOCIATION

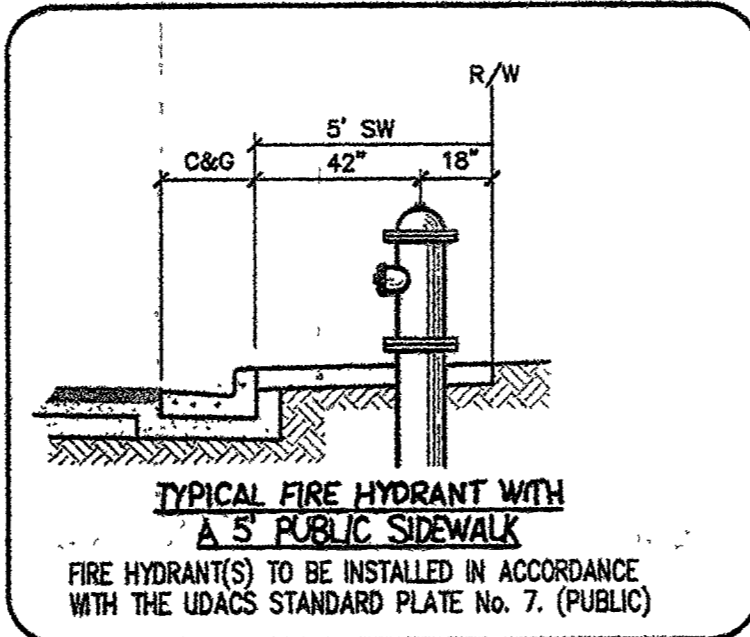
DISCLAIMER NOTE:
 UTILITY LOCATIONS SHOWN HEREON ARE APPROXIMATE ONLY. IT SHALL BE THE CONTRACTOR'S RESPONSIBILITY TO DETERMINE THE EXACT HORIZONTAL AND VERTICAL LOCATION OF ALL EXISTING UNDERGROUND OR OVERHEAD UTILITIES PRIOR TO COMMENCING CONSTRUCTION. NO REPRESENTATION IS MADE THAT ALL EXISTING UTILITIES ARE SHOWN HEREON. THE ENGINEER ASSUMES NO RESPONSIBILITY FOR UTILITIES NOT SHOWN OR UTILITIES NOT SHOWN IN THEIR PROPER LOCATION. CONTRACTOR TO NOTIFY ENGINEER OF ANY CHANGES OR DISCREPANCIES.
 Avoid overhead power line contact. It's costly.
 Avoid existing underground utility lines. It's costly.
Call before you Overhead
 1-702-593-6111
Call before you Dig
 1-800-227-2600



TYPICAL FIRE HYDRANT WITHOUT SIDEWALK
 FIRE HYDRANT(S) TO BE INSTALLED IN ACCORDANCE WITH THE UDACS STANDARD PLATE NO. 7. (PUBLIC)

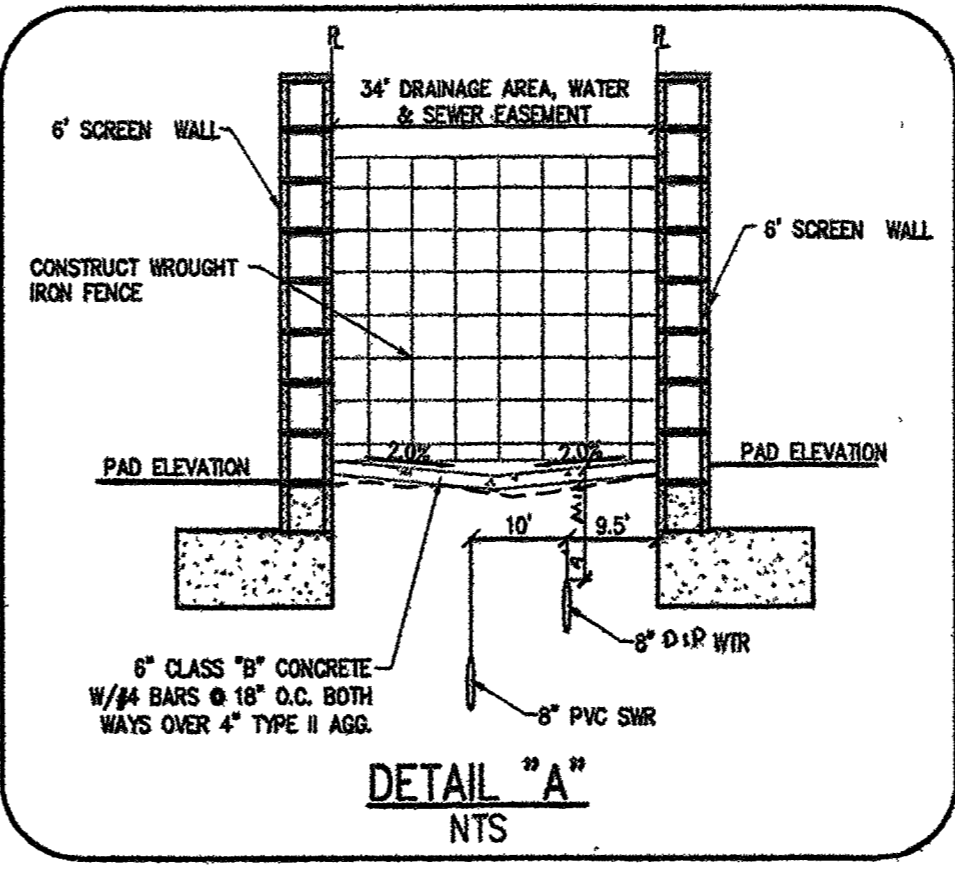


TYPICAL FIRE HYDRANT WITH A 3.5' PRIVATE SIDEWALK
 FIRE HYDRANT(S) TO BE INSTALLED IN ACCORDANCE WITH THE UDACS STANDARD PLATE NO. 7. (PUBLIC)



TYPICAL FIRE HYDRANT WITH A 5' PUBLIC SIDEWALK
 FIRE HYDRANT(S) TO BE INSTALLED IN ACCORDANCE WITH THE UDACS STANDARD PLATE NO. 7. (PUBLIC)

SINGLE METER BOX - ARMORCAST
 BOX-P600048ST
 LID-A600048AT



DETAIL "A"
 NTS

REVISE ST. ELEVATION 10/17/04

GREYSTONE HOMES
 2820 N. GREEN VALLEY PKWY., SUITE 611
 HENDERSON, NEVADA 89014
 (702) 458-7700

6655 Bermuda Road
 Las Vegas, NV 89111
 (702) 892-5400 Fax: (702) 898-5454

CarterBurgess
 Consultants in Planning, Engineering,
 Construction Management, and Real Estate Services

UTILITY PLAN 1
 LONE MOUNTAIN/CLIFF SHADOWS
 UNIT 1

DESIGNED BY: [Signature]
 CHECKED BY: [Signature]
 PROJECT NO.: 240740

SCALE: 1"=40'
 HORIZ. VERT. N/A

SHEET 8
 8 OF 24 SHEETS
 DRAWING NO. 10744844-1

APPROVAL
 LAS VEGAS VALLEY WATER DISTRICT
 PROJ. 105208
 DATE: 11/28/04

74992 98602

- SEWER ASBUILT -